



## STANDARD FINISHES

Each of our pieces are unique and one of a kind; this uniqueness also applies to the three (3) beautiful standard finishes we produce. We can make any sink in these standard finishes.

We offer three (3) standard finishes and seven (7) custom finishes. All of our custom finishes are only Made to Order (MTO).

Our **Standard Finishes** are:

- CAFE VIEJO (CV)
- NATURAL (NA)
- FUEGO (FU)

CAFE VIEJO



Our most popular finish is the CAFE VIEJO (CV). It is primarily medium- dark brown with black hues and occasionally will show very small areas of deep burgundy. It is a warm finish with a lot of character. This finish is very consistent and repetitive and even though each sink is unique you will receive a sink very similar to the pictures shown in our on line store. It's a strong finish and will last for years to come. The Café Viejo finish matches very well with the common Oil Rubbed Bronze finish found in Faucets & Drains, making it a more popular finish. When ordering two or more sinks that will be installed in the same place, we prefer to order them directly from our suppliers so that the sinks are manufactured from the same batch of copper and by the same artistic hands of our experienced artisans; this way we can ensure a very close cosmetic appearance. Other Faucets and Drain finishes that match well with this Cafe Viejo finish go by the names of Victorian Bronze, Venetian Bronze, etc.

Some sink examples in our Cafe Viejo finish - CV :



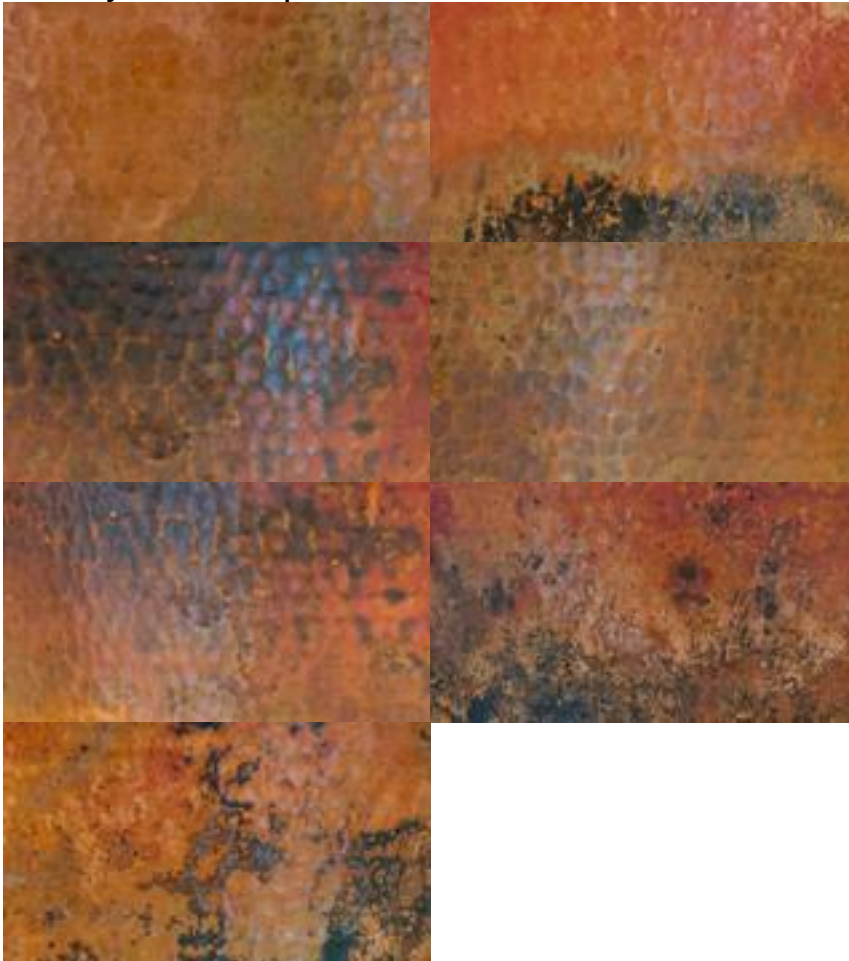
All of our sinks are 100% hand hammered but we can also custom produce sinks with a smooth finish or a combination of both methods. We recommend the hammering technique since it adds strength and rigidity to the piece. Hammered surfaces are stronger than Smooth surfaces.

#### NATURAL



Our Natural finish is the most rustic and versatile copper sink finish. It is truly unique with tones of orange, yellow, black, medium brown, light brown and occasionally reddish tones. This is our most varied finish due to the natural process (wood fire) used to create it. Based on the climate conditions of temperature and humidity at the time that the sink is made, some sinks will have more of a mix of colors, saturation & contrast than others. **We can't duplicate exactly the same finish showed in the pictures of our web site** for the reasons previously explained. In order to highlight the dark colors of the Natural finish (Browns and black) it is recommended to use Oil Rubbed Bronze or Victorian Bronze finishes for the matching Faucets & Drains.

Please review the attached swatches to understand the variability of our Natural finish. This lack of consistency is the beauty and uniqueness of this finish.



Some sink examples in our Natural finish - NA :



When ordering two or more sinks that will be installed in the same place (Especially the Natural finish), we prefer to order them directly from our suppliers so the sinks are manufactured from the same batch of copper, same artisan and under the same weather conditions.

#### FUEGO



Our exclusive Fuego finish has golden and copper tones. The saturation of the golden and/or copper colors can vary from light to deeper tones. This finish is created using a torch-fired process where the heat is applied to the sink in circular motions and/or linear patterns. Even though each piece is unique and one of a kind, the cosmetic look of this finish is fairly consistent and repetitive. When ordering two or more sinks that will be installed in the same place, we prefer to order them directly from our suppliers so the sinks are manufactured from the same batch of copper and by the same artistic hands of our experienced artisans; this way we can ensure a very close cosmetic appearance.

We offer nice matching Faucets & Drains in Antiqued Copper or Venetian Bronze that complement our Fuego finish.

Some sink examples in our Fuego finish - FU :

