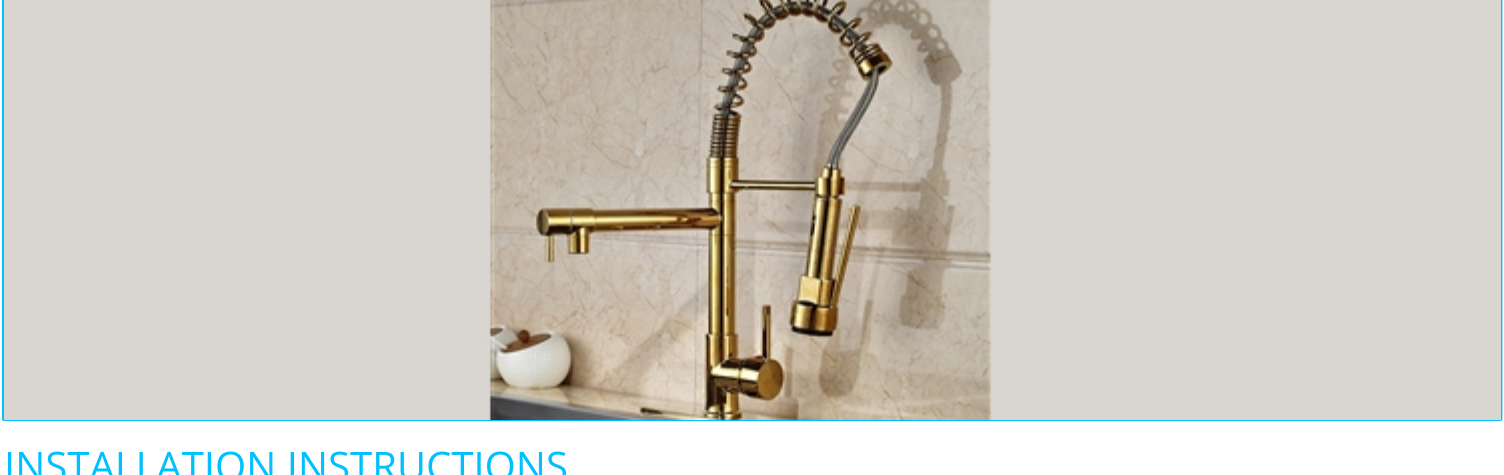


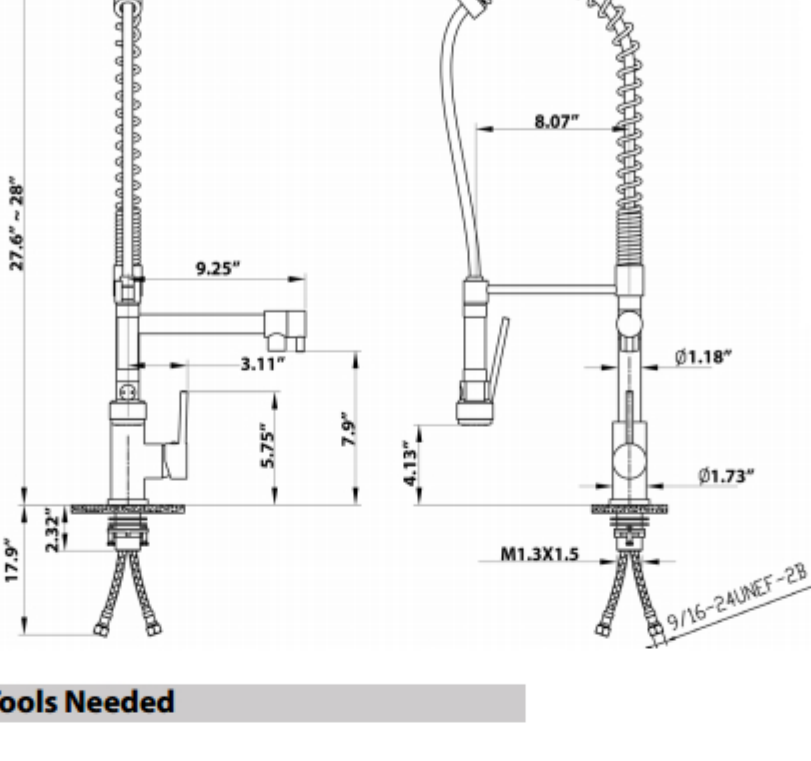
Venezuela Gold Finish Kitchen Sink Faucet with Pull Down Faucet



INSTALLATION INSTRUCTIONS

- Overall Height: 28"
- Spout Height: 4.13"
- Spout Reach: 9.25"
- Pot Filler Spout Height: 7.9"
- Pot Filler Spout Reach: 9.25"

Pot Filler



Tools Needed



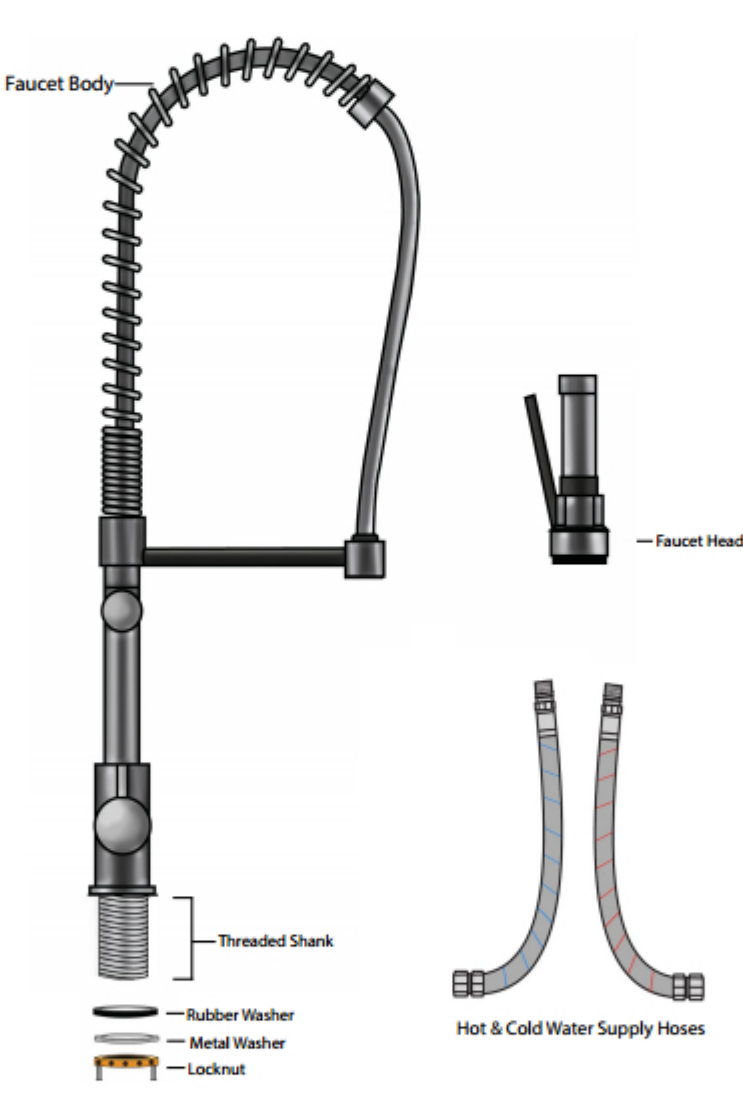
Groove point pliers



Adjustable wrench



Phillips head screwdriver



1. Remove the locknut from the threaded shank (Figure 1).

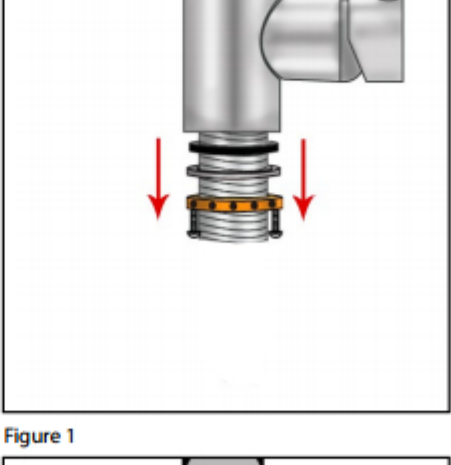
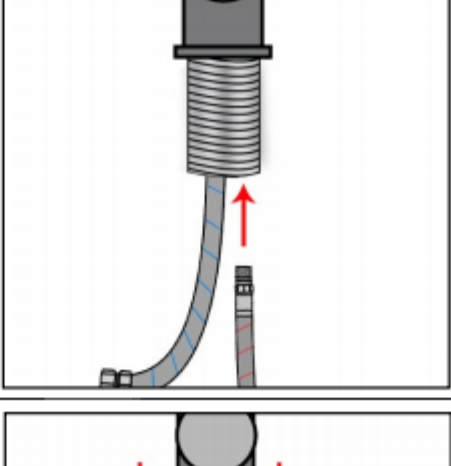


Figure 1

2. Attach the hot and cold water supply hoses to the faucet by screwing the male end of each hose into the holes in the base of the faucet body (Figure 2).



3. Place the faucet body into the faucet hole of the deck/sink (Figure 3). A standard 1-3/8 inch hole is required for this faucet.

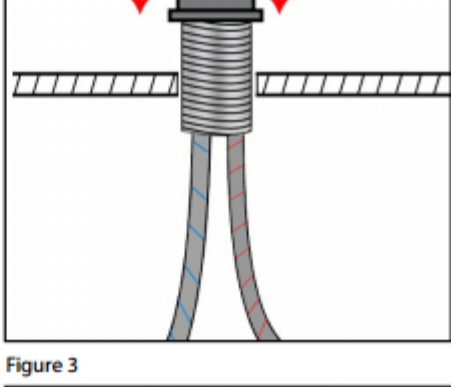
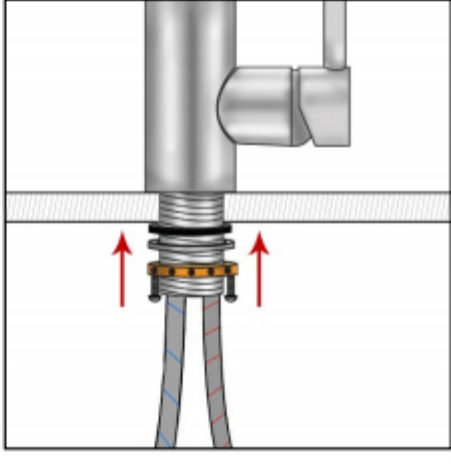


Figure 3

4. From underneath the counter attach the locknut to the threaded shank by screwing until tight (Figure 4).



5. Then screw the remaining female ends of the supply hoses to the corresponding hot and cold water supply using an adjustable wrench or pliers (Figure 5).

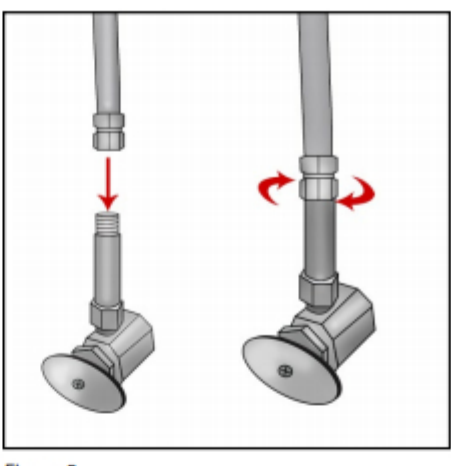


Figure 5

6. Turn water supply back on (Figure 6). Test the faucet by turning faucet on and off. Make sure there is good water flow and no leaks. If there is a leak, turn the water supply off and contact Ruvati.

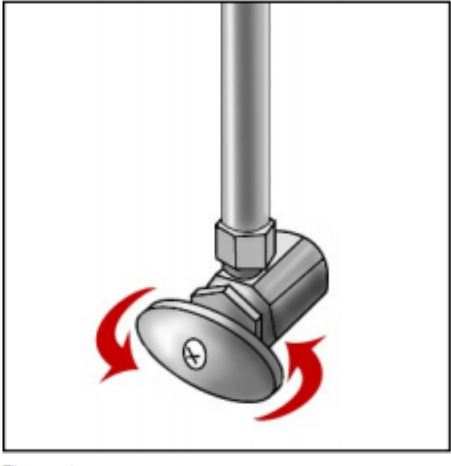
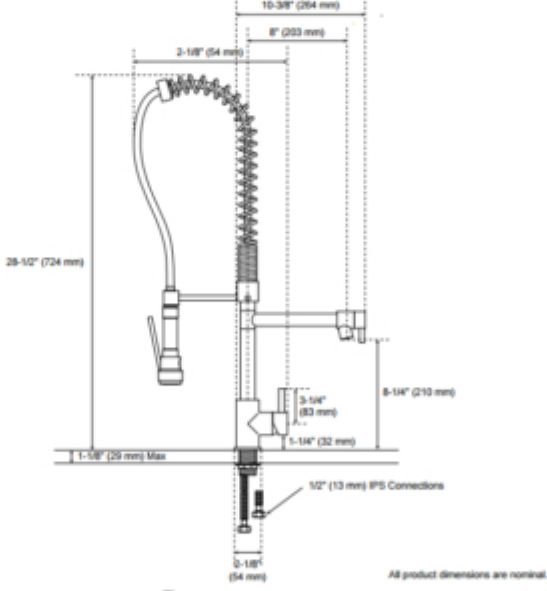
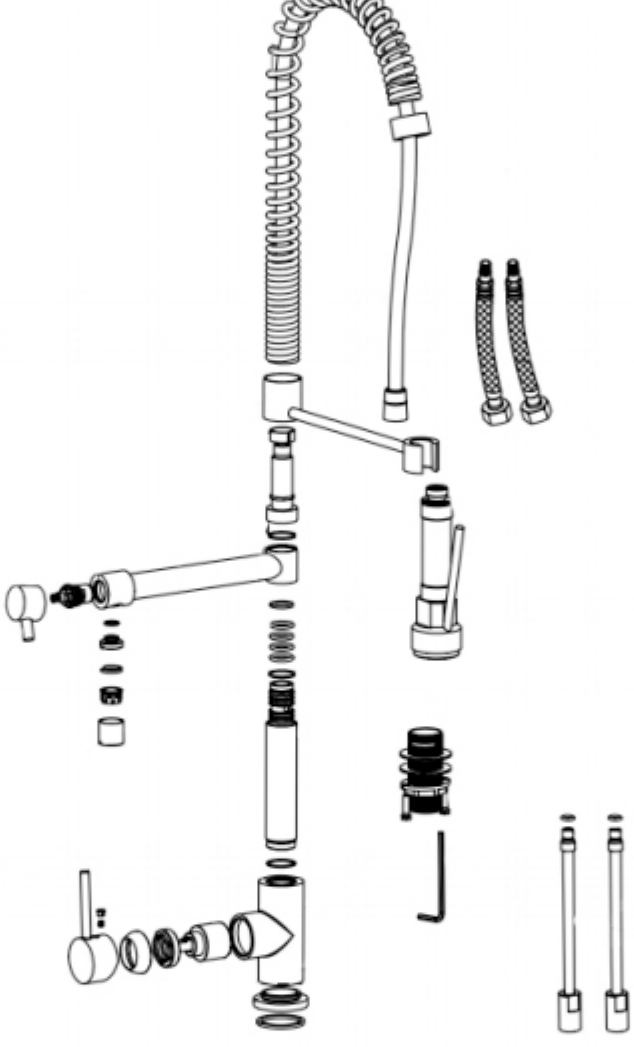


Figure 6



INSTALLATION INSTRUCTIONS

Before installing, read entire kitchen faucet installation instructions. Observe all local building and safety codes.

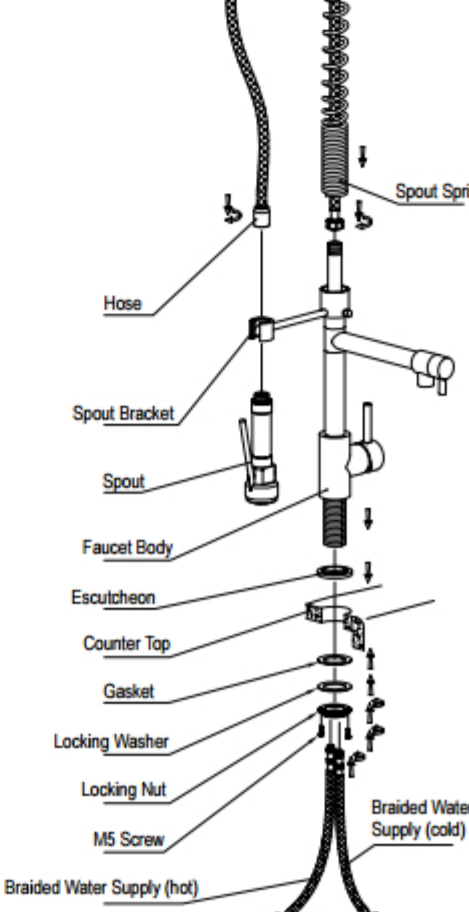
For the following installation instructions for your new kitchen faucet it is assumed that any old fixtures have been removed and any repairs or modifications to the water supply have been completed.

Unpack and inspect the product for any shipping damages. If you find damages, do not install. Contact Customer Service at 1-866-855-2284. If you need assistance or have questions while installing your faucet, contact Customer Service.

We recommend consulting a professional if you are unfamiliar with installing kitchen fixtures and plumbing. Signature Hardware accepts no liability for any damage to the floor, walls, plumbing or for personal injury during installation.

INSTALLATION

1. Thread the braided water supplies onto the faucet body.
2. Place the escutcheon over the mounting hole in the counter top and pass the faucet body and supplies through the hole.
3. From beneath the sink, thread the gasket, locking washer, and locking nut onto the faucet body. Secure with two M5 screws.
4. Connect the check valves to the main water supply. Connect the braided supplies to the check valves.
5. Attach the hose and spout spring to the faucet body.
6. Attach the spout to the house.
7. When your faucet installation is complete, turn on the water supply. Check to make sure that all connections are tight (no water should be leaking) and that the hot and cold supplies are working correctly. Turn the water on and allow the water to flow through the spout for approximately 60 seconds.



This General diagram and installation instructions are not intended for any specific model, but is presented as a general guideline for Installations!