

## Kitchen Island Installation

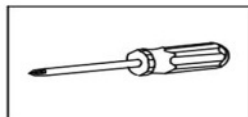
Tools You Will Need: Tools You May Need



Adjustable wrench



Hexagon wrench



Philips Screwdriver

### Before the Installation

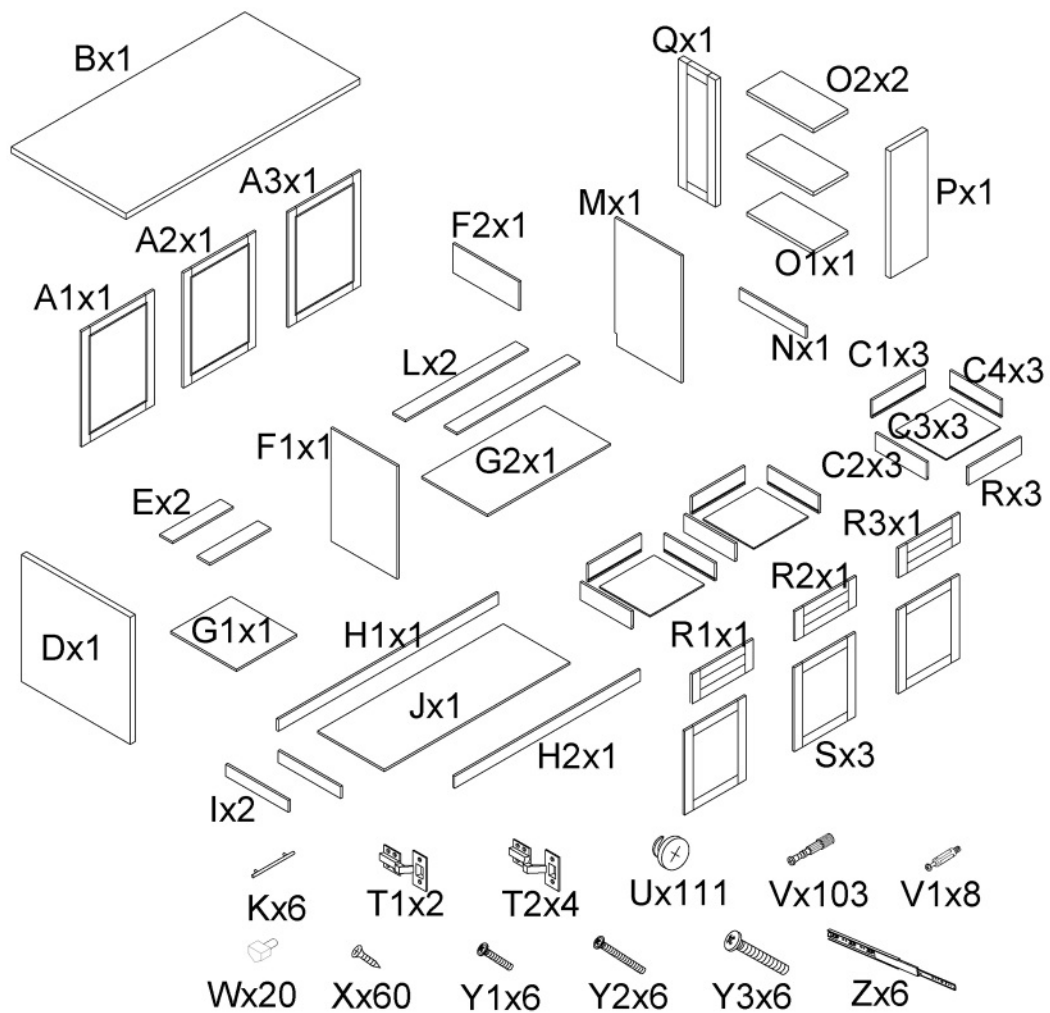
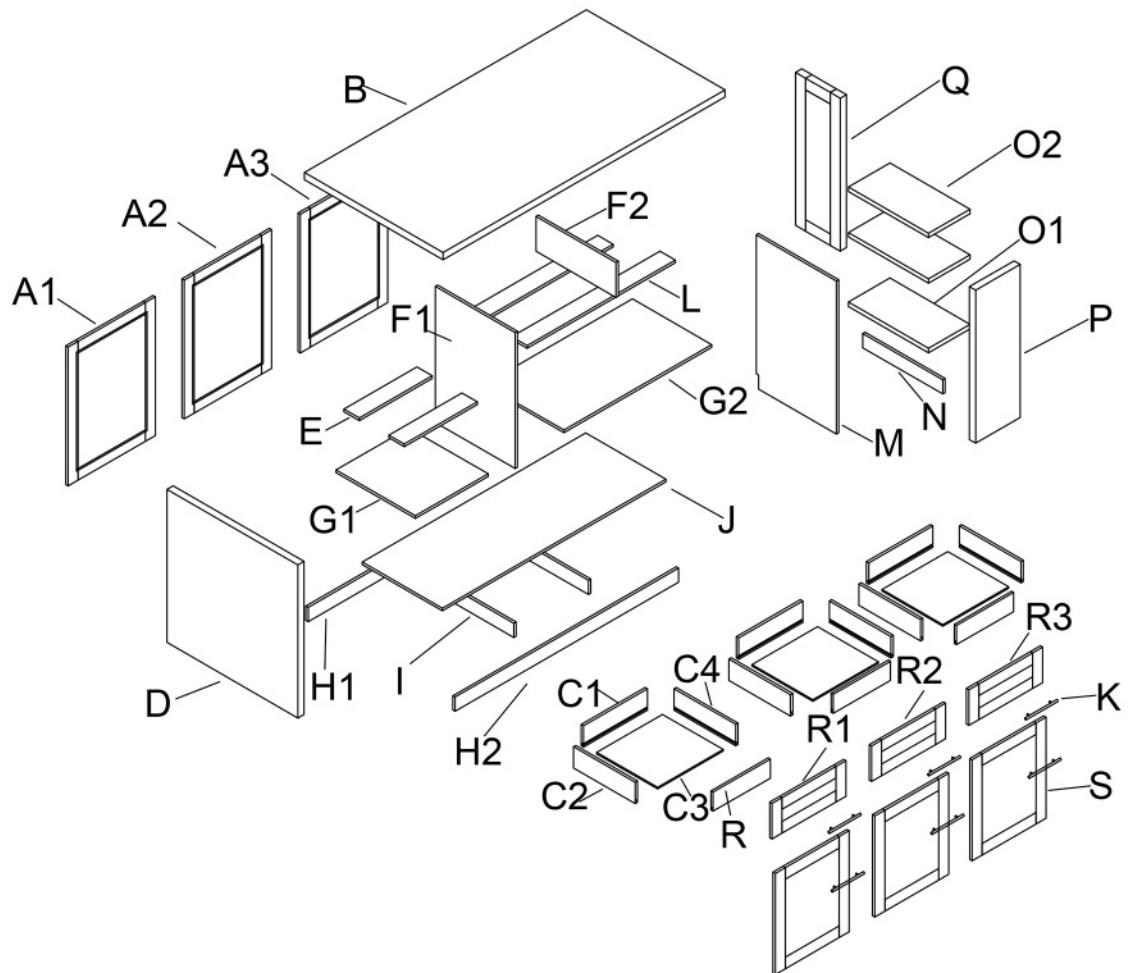
1. Do not throw away packing materials until assembly is complete for small parts may come loose inside the carton during shipment. If parts are missing, please contact us.
2. Assemble this item on a soft surface, such as carpet to protect the finish.
3. Proper assembly of this item requires 2 people.
4. Periodically check to ensure that all connections are tight.
5. It is recommended that installation of the product be done by a qualified licensed furniture assembler.

### Care and Cleaning

1. To protect the finish, avoid use chemicals and household cleaners.
2. All hot serving dishes should be placed on a pad.
3. Any liquid spilled onto the top should be cleaned up immediately with a damp cloth.

# Parts List

P.2/9



## Step 1

P.3/9

U  x16

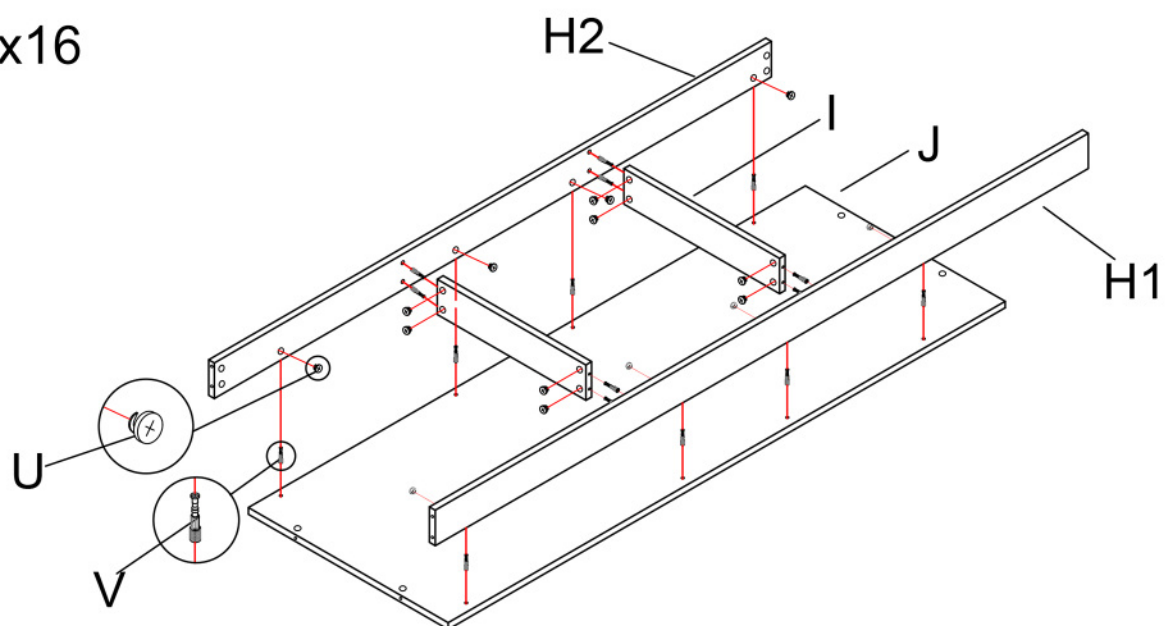
V  x16

H2x1

H1x1

Ix2

Jx1

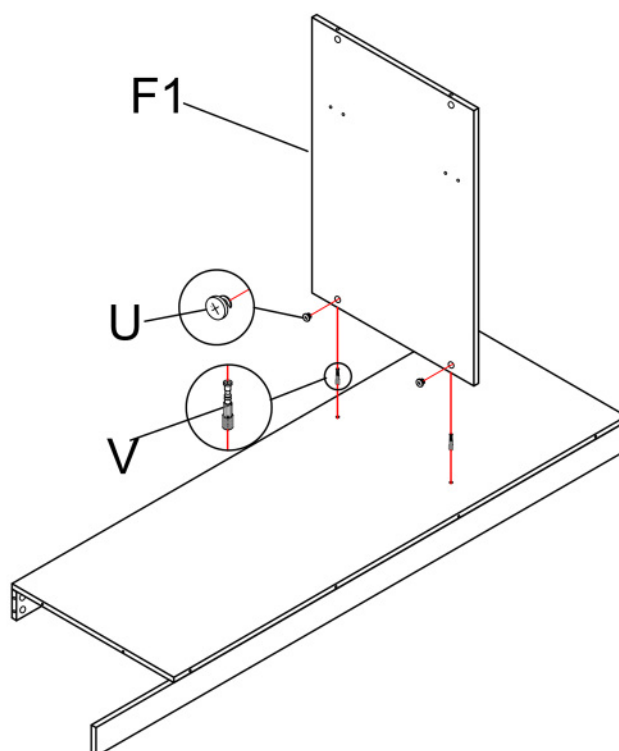


## Step 2

U  x2

V  x2

F1x1



### Step 3

P.4/9

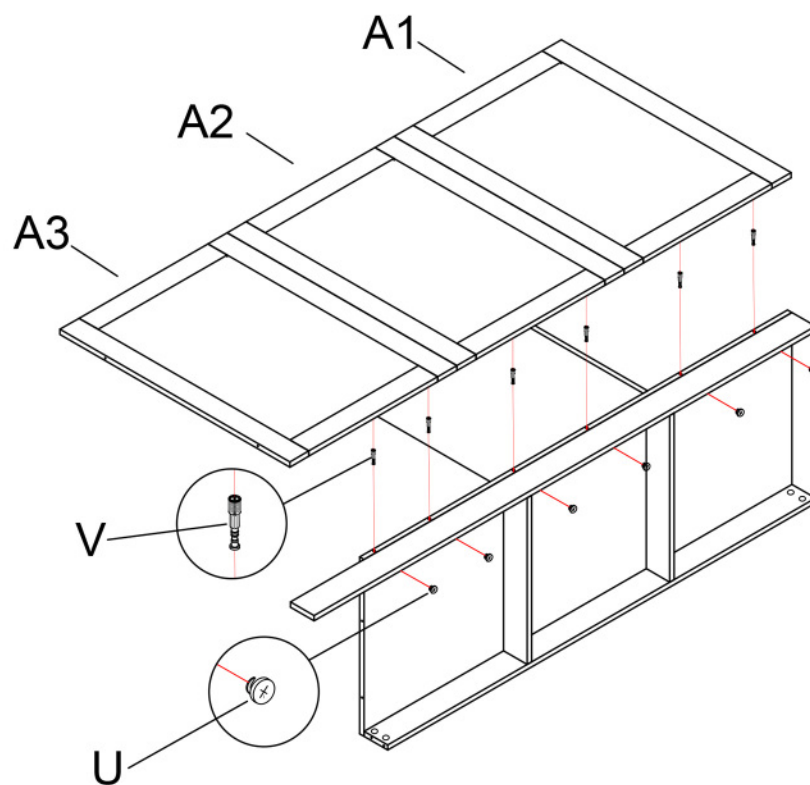
U  x6

V  x6

A1x1

A2x1

A3x1



### Step 4

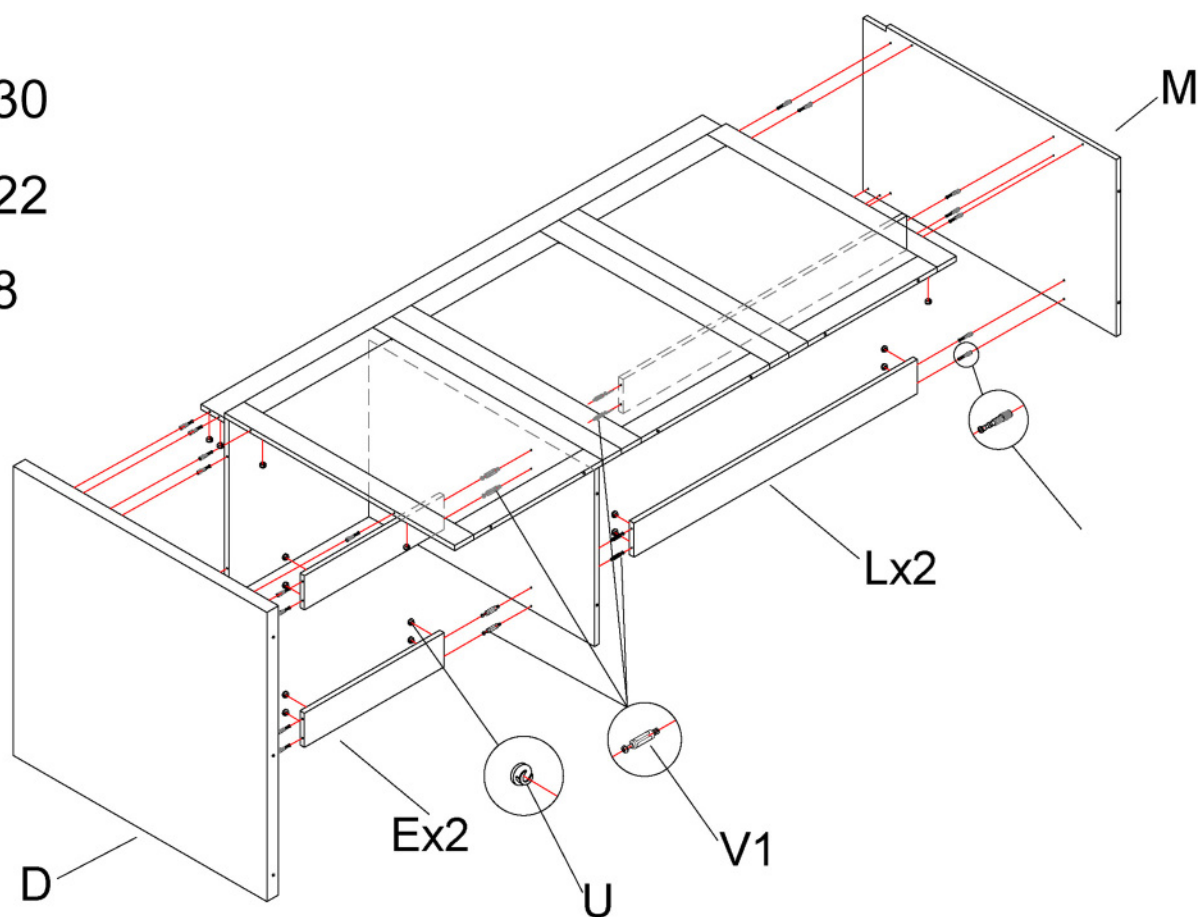
U  x30

V  x22

V1  x8

Dx1

Mx1



## Step 5

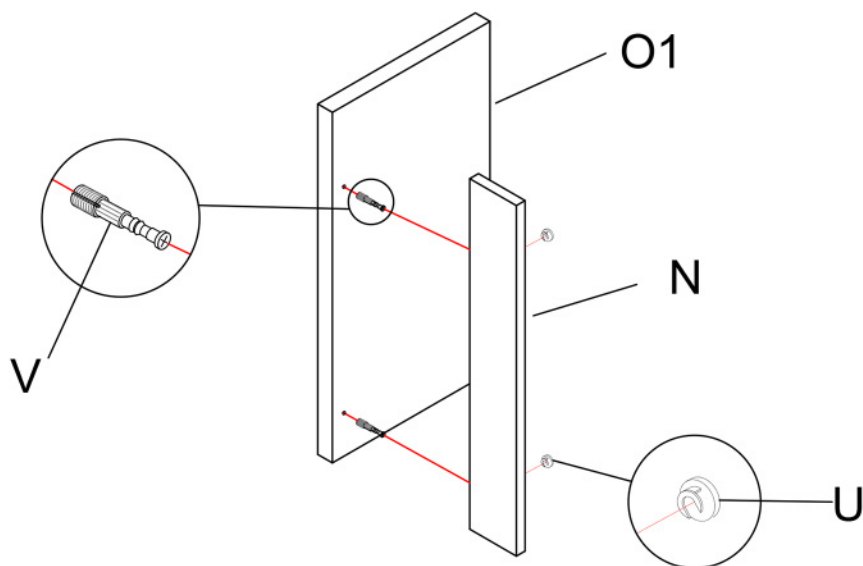
P.5/9

U  x2

V  x2

O1x1

Nx1

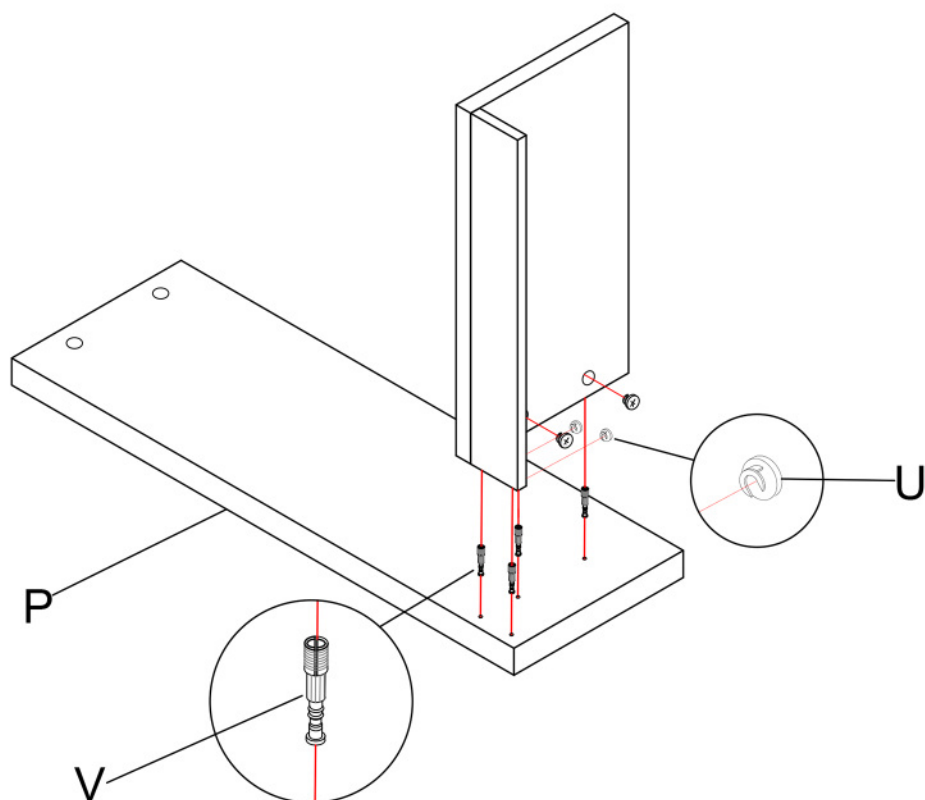


## Step 6

U  x4

V  x4

Px1



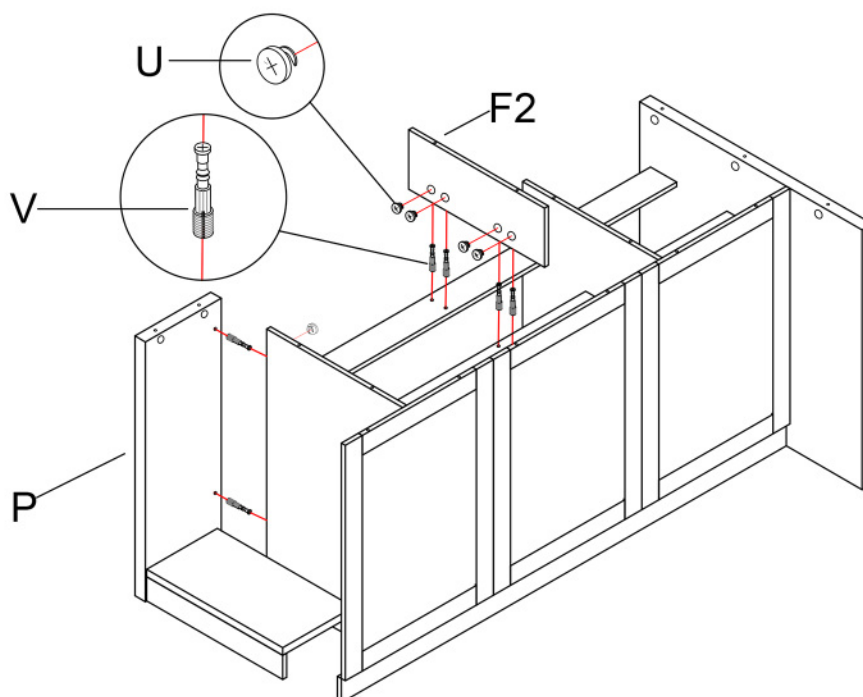
## Step 7

P.6/9

U  x6

V  x6

F2x1



## Step 8

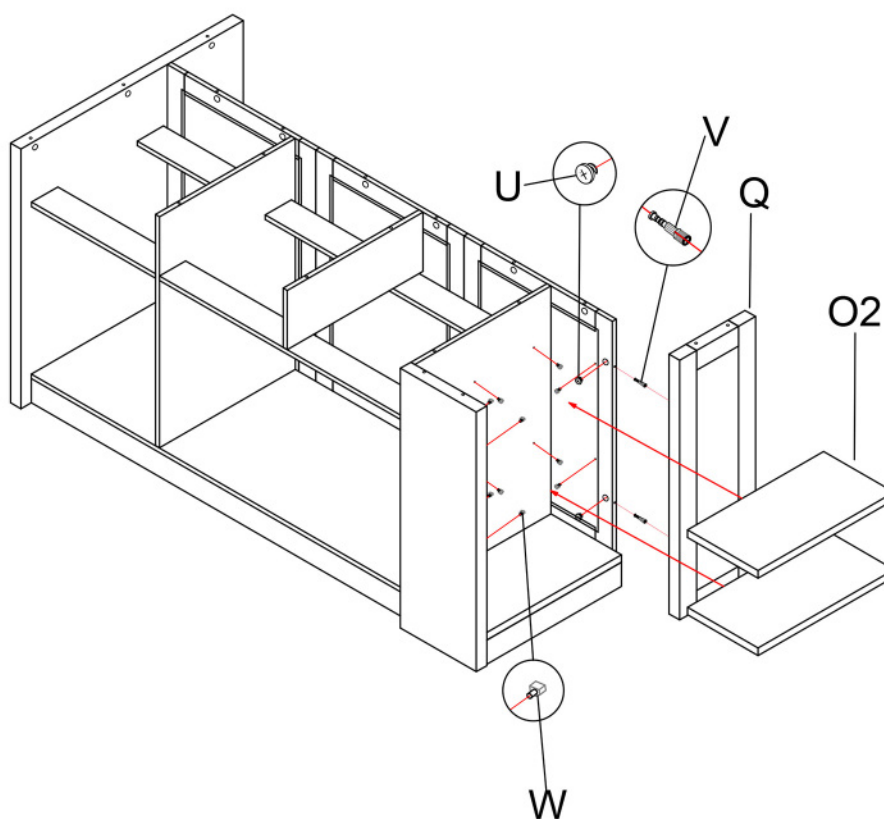
U  x2

V  x2

W  x12

Qx1

O2x2





## Step 9

P.7/9

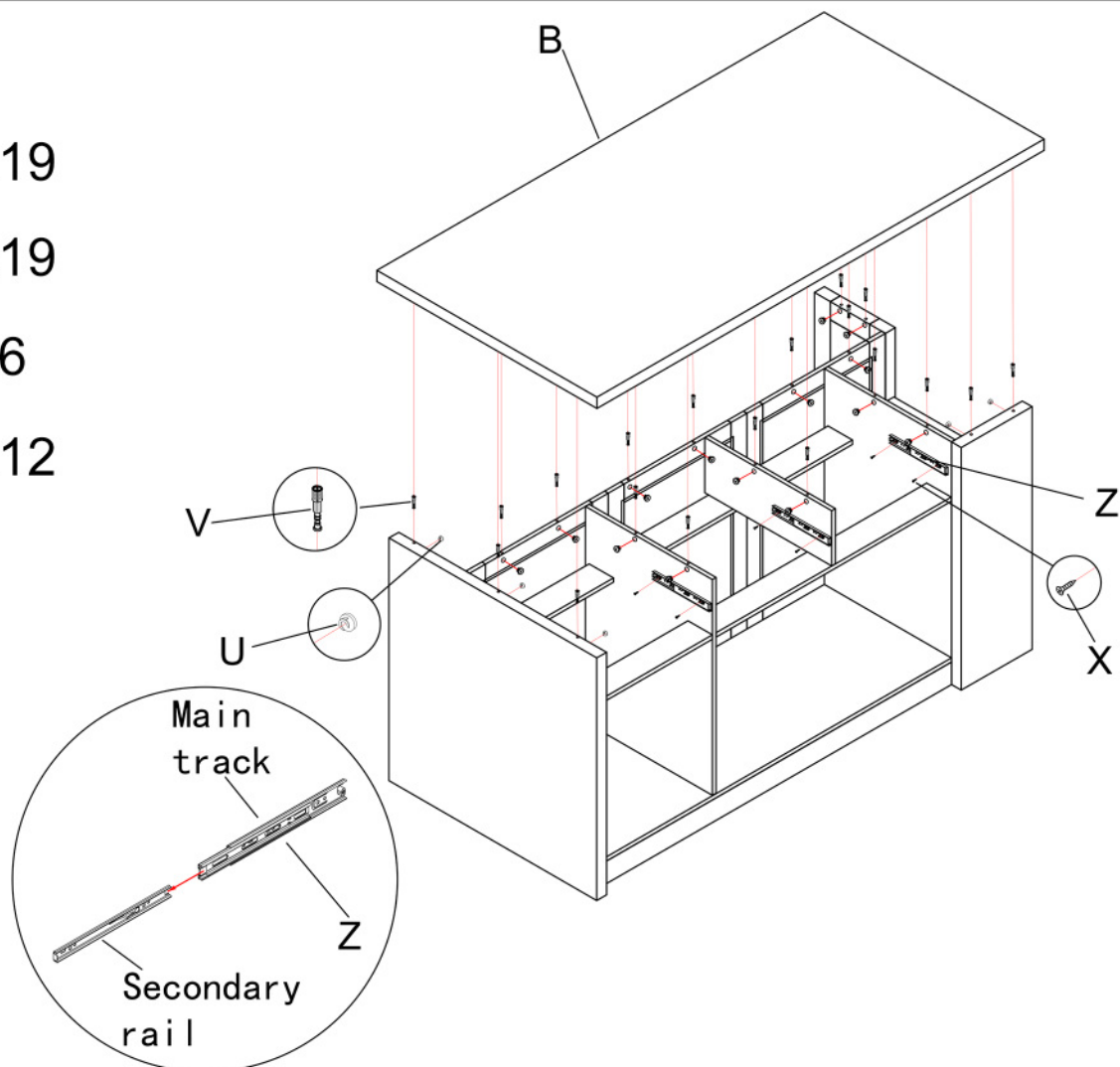
U  x19

V  x19

Z  x6

X  x12

Bx1



## Step 10

U  x24

V  x24

X  x12

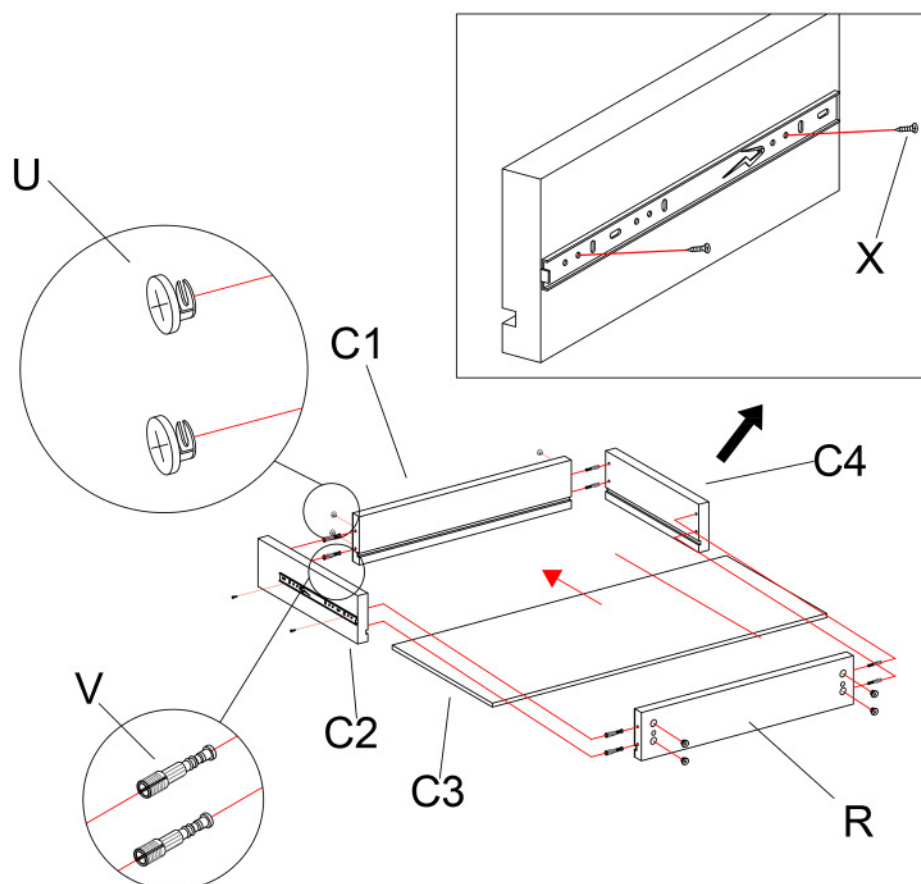
C1x3

C2x3

C3x3

C4x3

Rx3



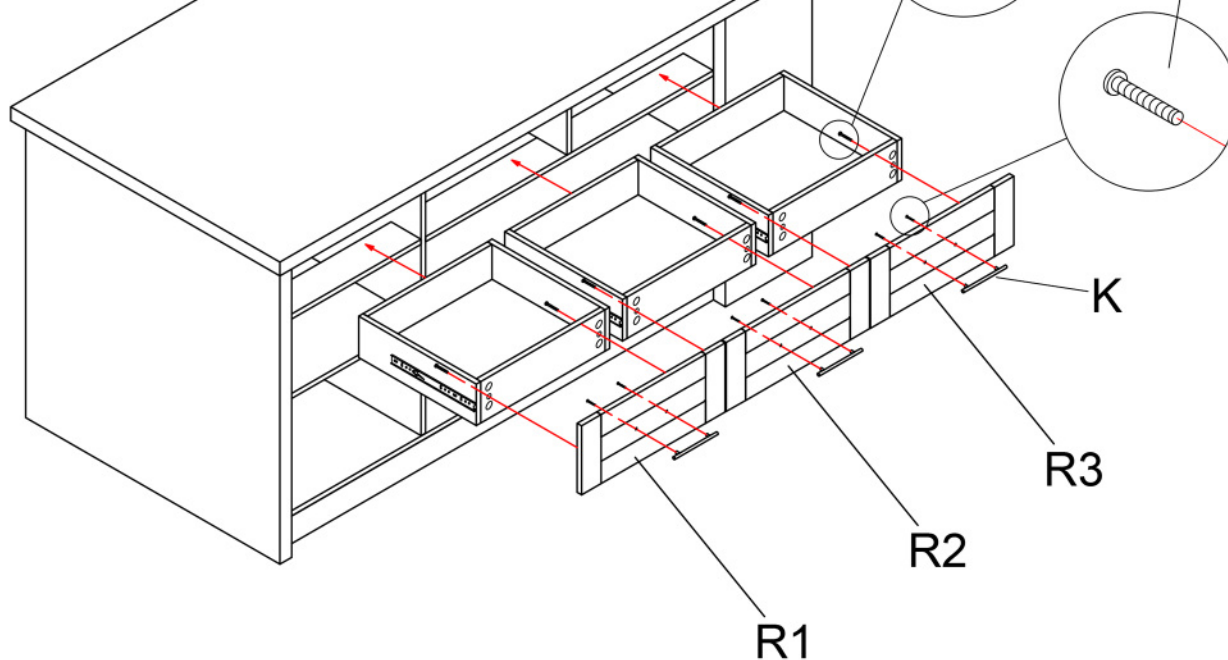
## Step 11

P.8/9

K  x3

Y1  x6

Y3  x6

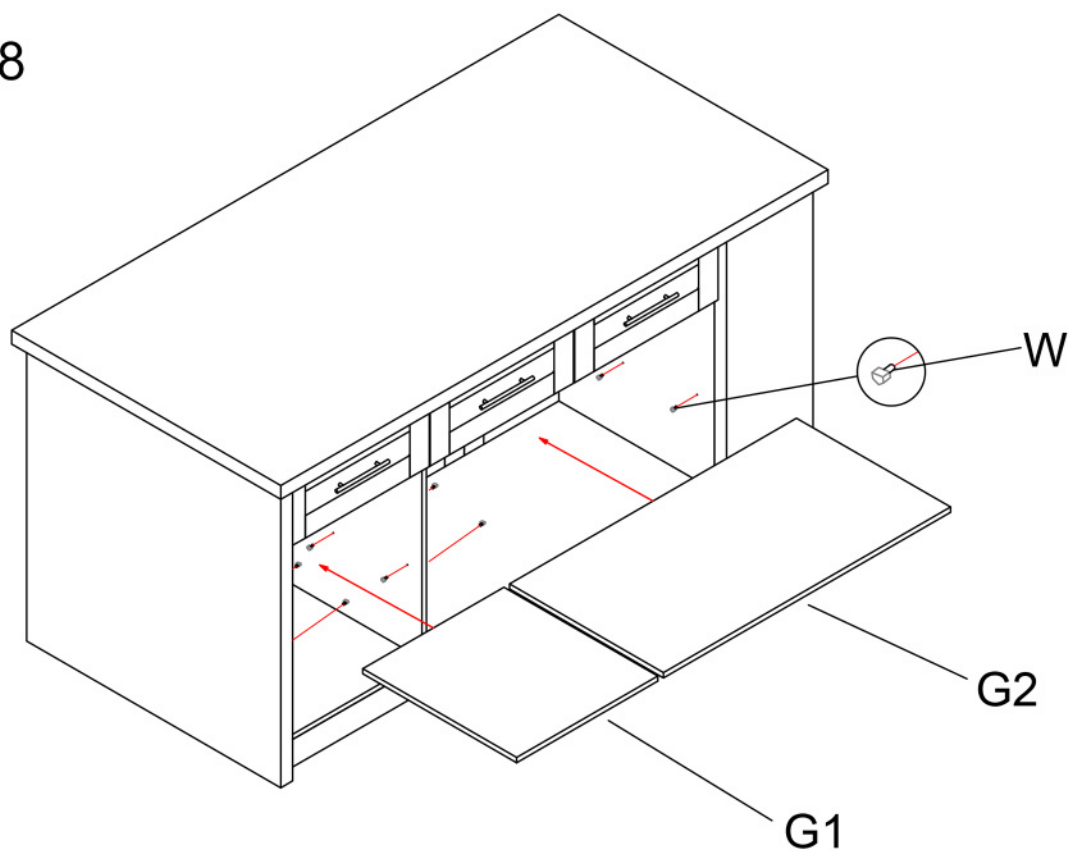


## Step 12

W  x8

G1x1

G2x1






## Step 13

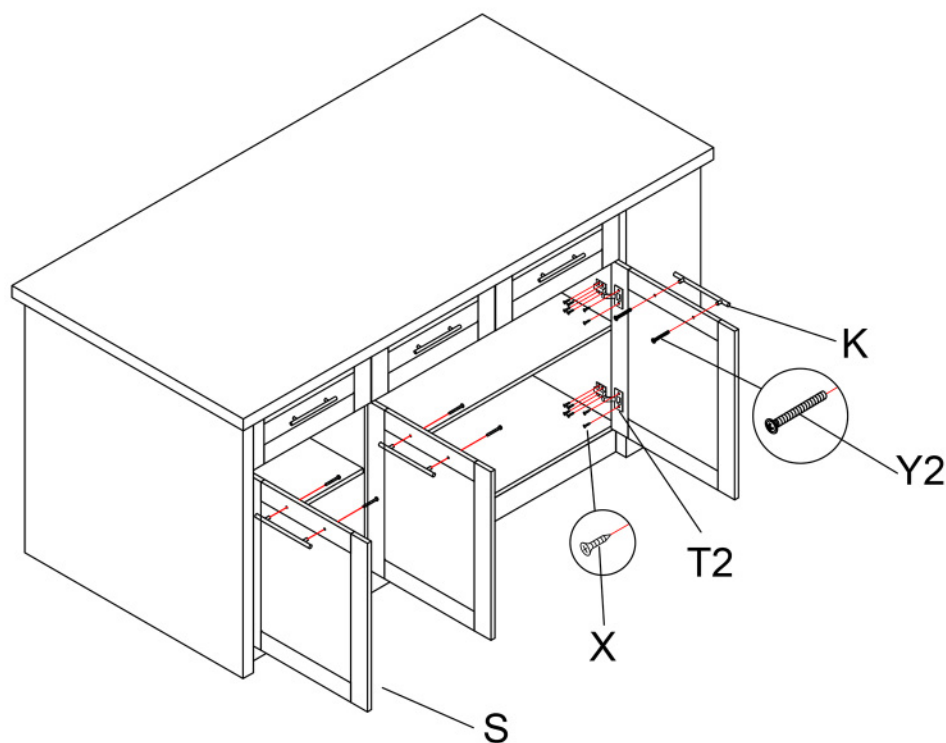
P.9/9

Y2  x6

X  x12

K  x3

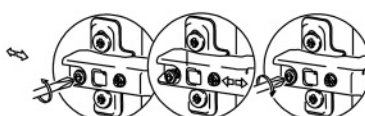
T2  x2



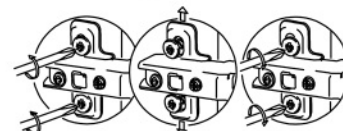
Screw off to fix the  
door left and right



Screw off to fix the  
door front and back




Screw off to fix the  
door up and down

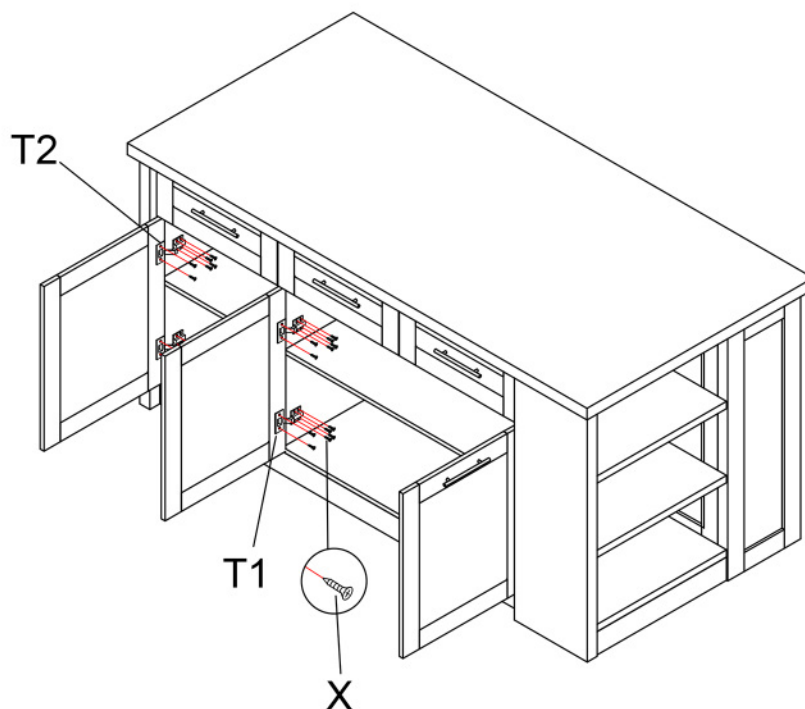


## Step 14

X  x24

T1  x2

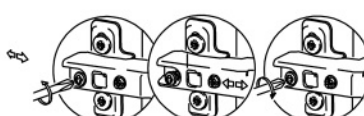
T2  x2



Screw off to fix the  
door left and right



Screw off to fix the  
door front and back



Screw off to fix the  
door up and down

