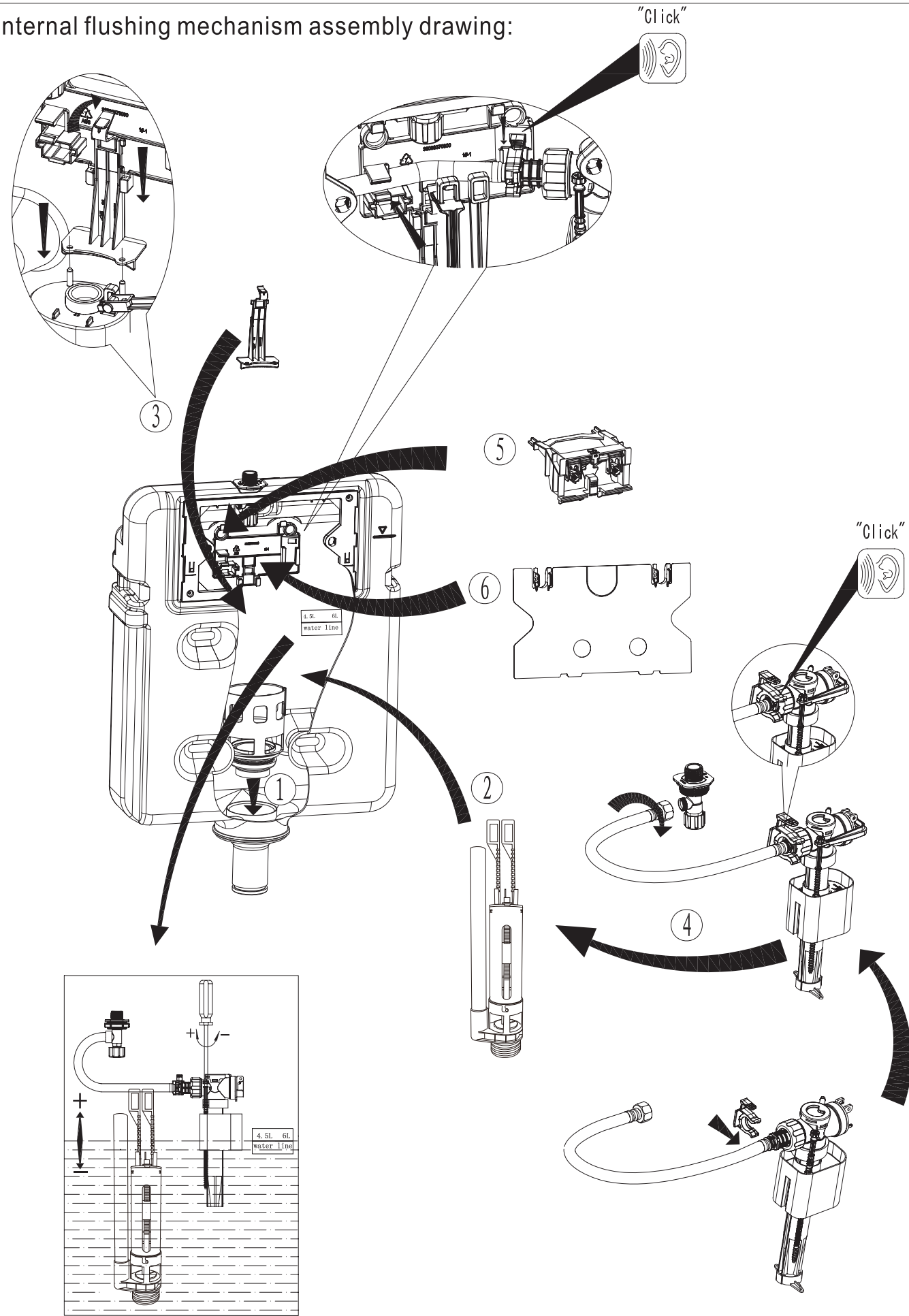


10.Internal flushing mechanism assembly drawing:

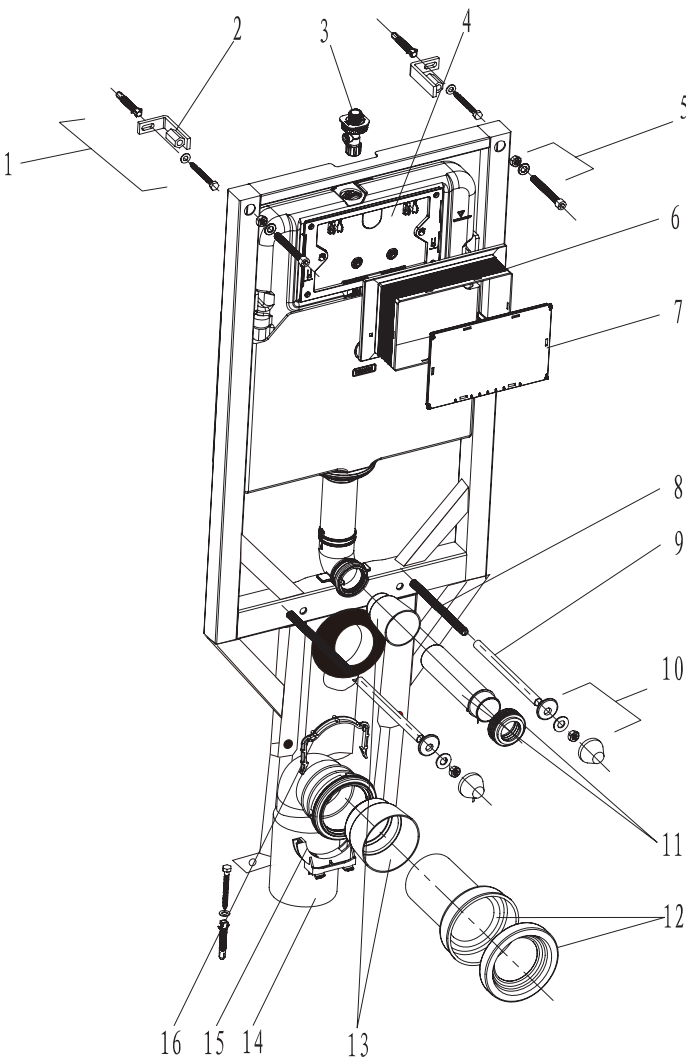


ASGFA3004A001A-1.0

Frame-structure

Concealed Cistern

Installation Manual



List of main installation accessories

NO.	Description	Qty	Function
1	Expansion screw	4	Mounting of frame and wall bracket
2	Wall bracket	2	Fixation of frame
3	Angle valve	1	Fill valve inlet and shut-off
4	Cistern cover	1	Airproof tank and mounting of locking bracket
5	Socker head screw	2	Mounting of frame and locking into wall bracket
6	Plastic holder	1	To reserve space for installation of actuator at wall building
7	Plastic holder cover	1	To prevent dust and impurities into tank at wall building
8	Connecting screw	2	To mount ceramic bowl
9	Protective cover	2	To protect connecting screw at wall building
10	Ceramic bowl fixing accessories	2	To mount ceramic bowl
11	Straight tube	1	To joint cistern into ceramic bowl
12	Connecting pipe	1	(cutting in accordance with wall thickness)
13	Piping stopper	2	To reserve space for straight tube and connecting pipe
14	Draining syphon	1	To discharge liquid and solid waste from ceramic bowl.
15	Draining syphon holder	1	
16	Mounting bracket	1	To mount draining syphon

### Important instruction:

1. Please adhere to the following installation instructions. We shall not be responsible for failures and loss that are contributed to improper installation.
2. Please confirm the fixation location of frame prior to installation and obtain the finished floor surface. Draw FEL on installation wall and follow it as baseline from ZERO (0) level.
3. The instructions have been composed based in the latest product specifications. We reserve the right to make modifications to the packaging and specifications without providing prior notification.

### NOTES:

1. Mount before bricks building.
2. All size unit in MM.
3. Follow the material product, should there is an unconformity with drawing.

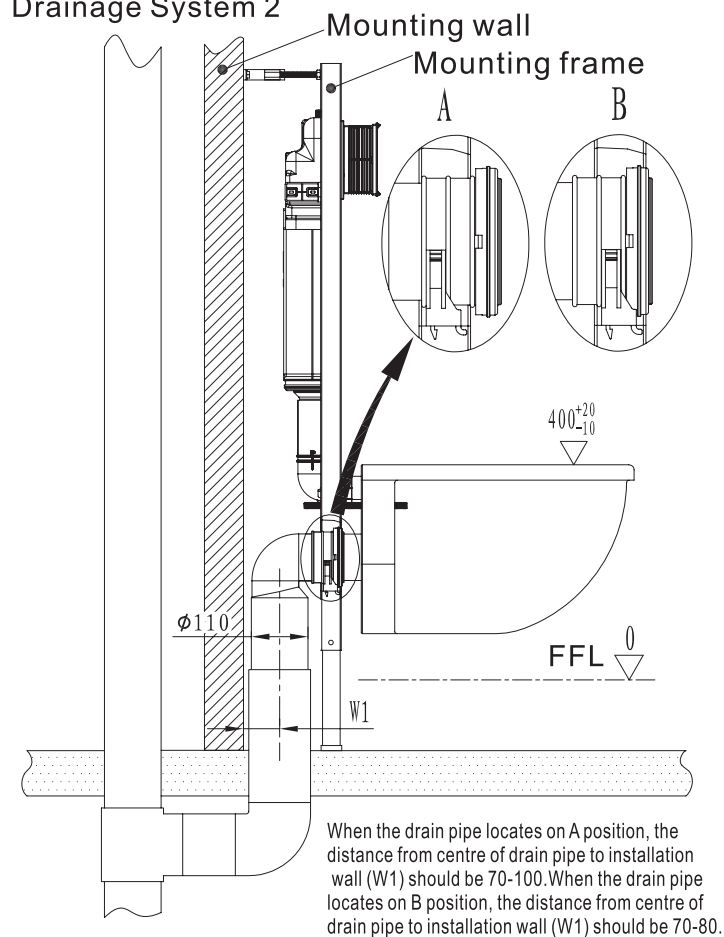
### Finished Floor.

! FFL = FINISHED FLOOR

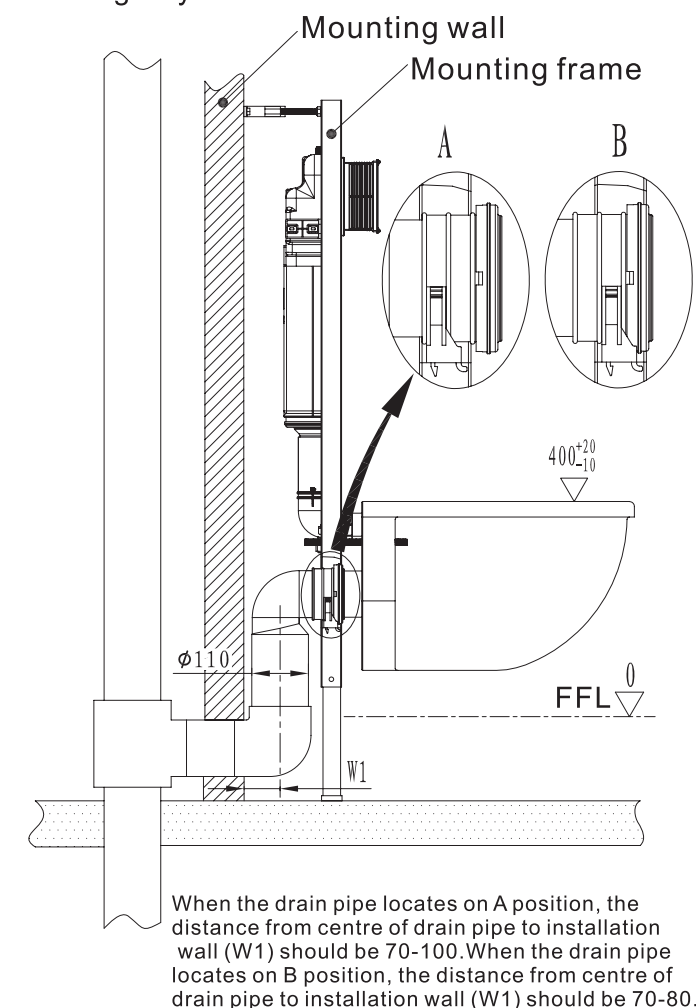
### 1. Drainage System Layout

Drawing 1 to 3 are three different installation systems for drain pipe. Customer should confirm whichever installation system according to drainage outlet position. If drainage outlet does not fall within the three systems, customer should follow one of three drainage system layout to correspond installation of our concealed cistern.

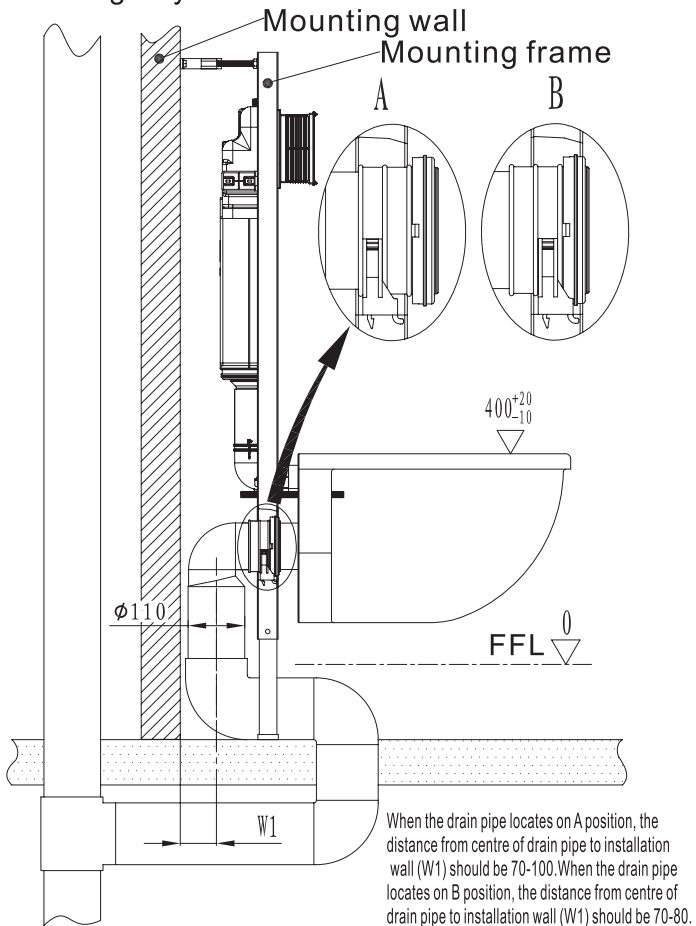
### Drainage System 2



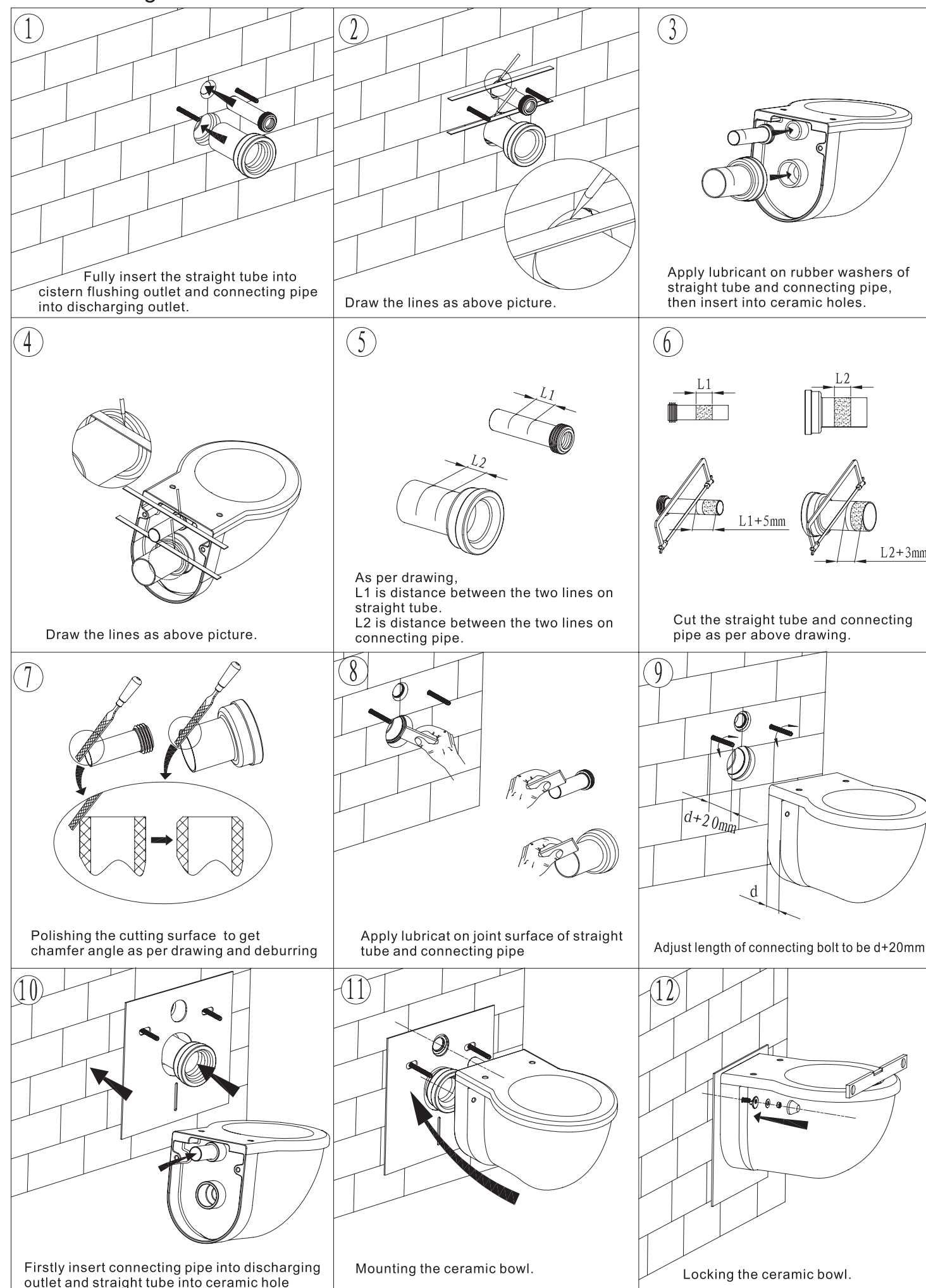
### Drainage System 1



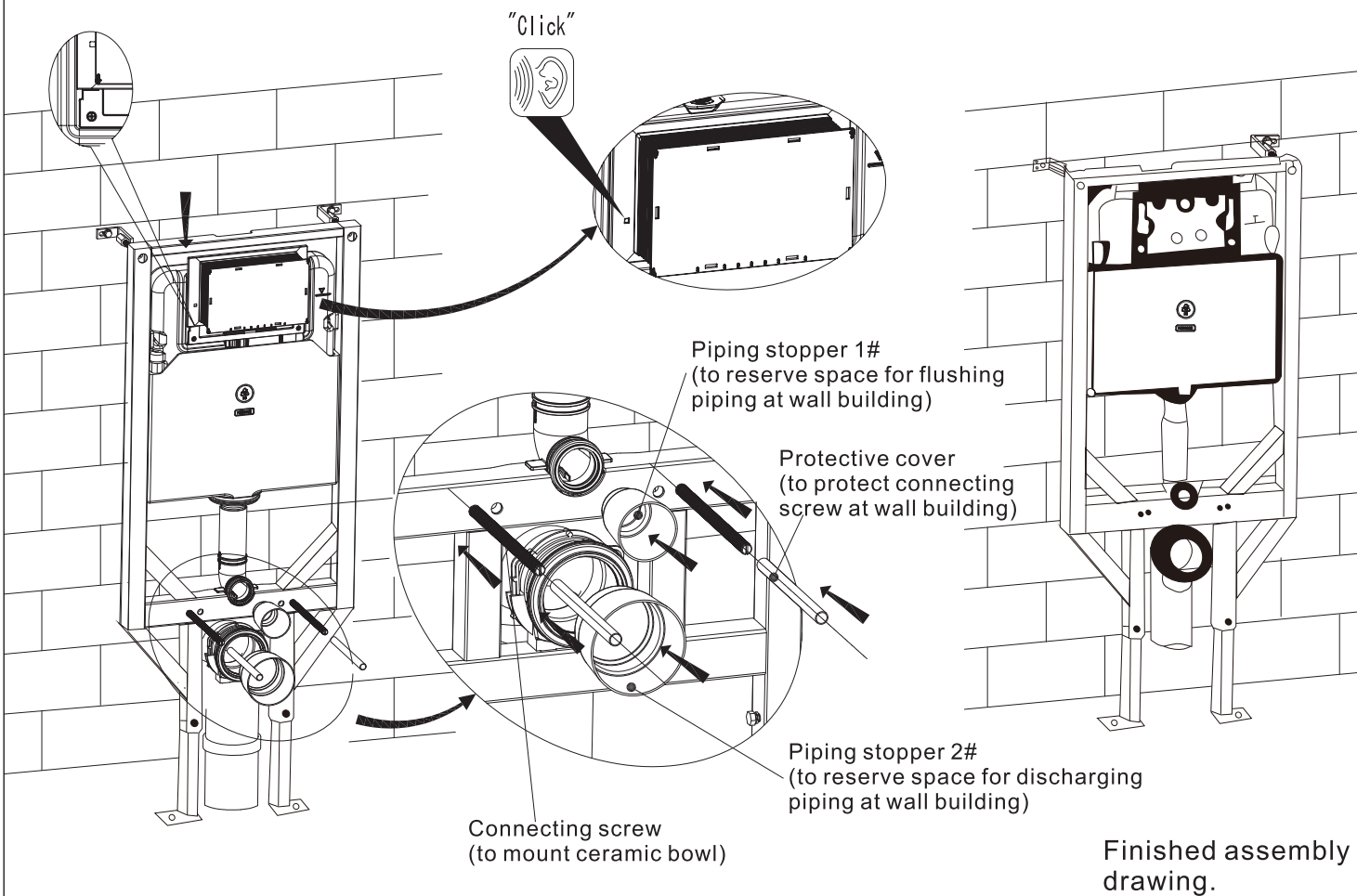
### Drainage System 3



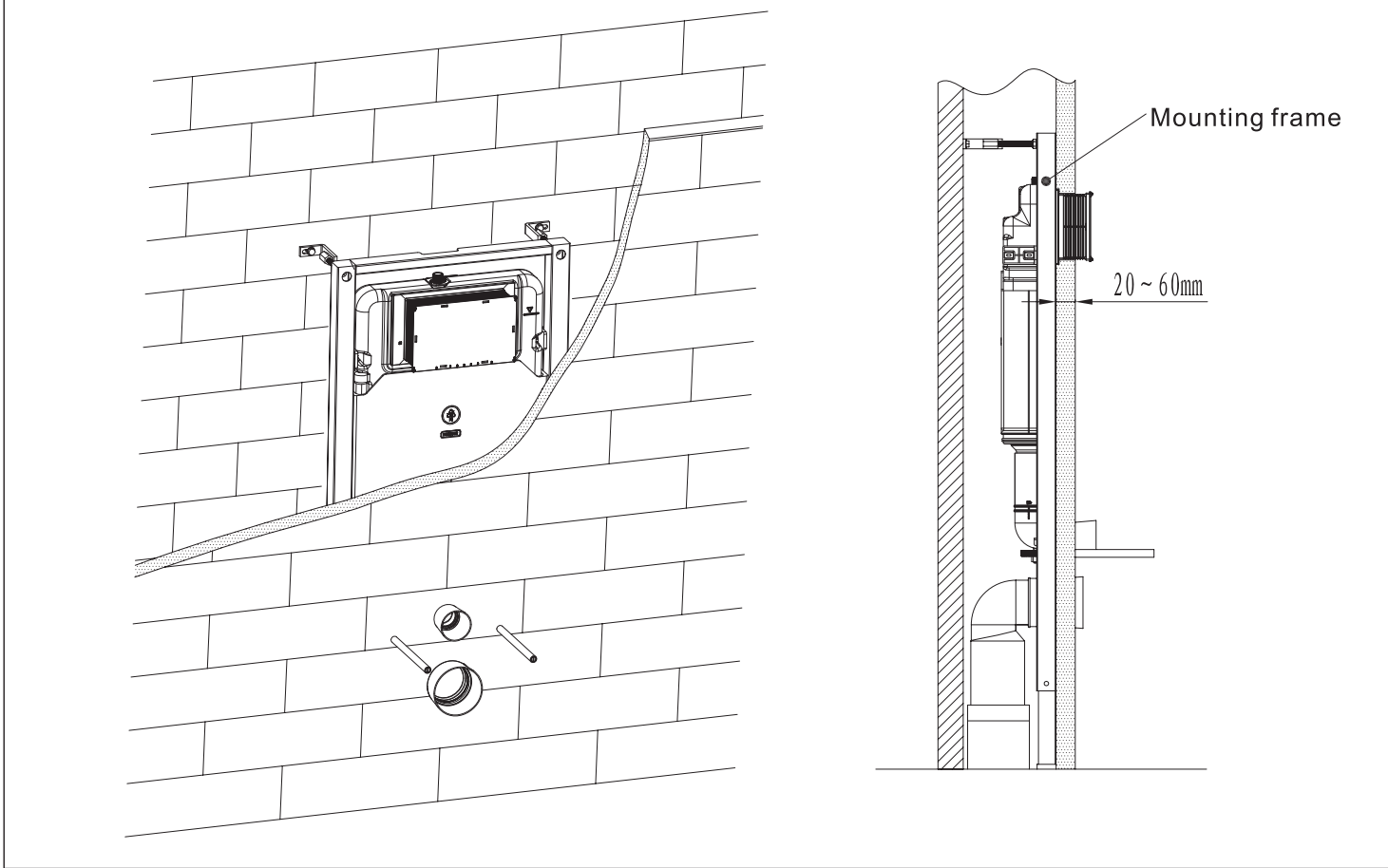
## 9. Mounting of ceramic bowl



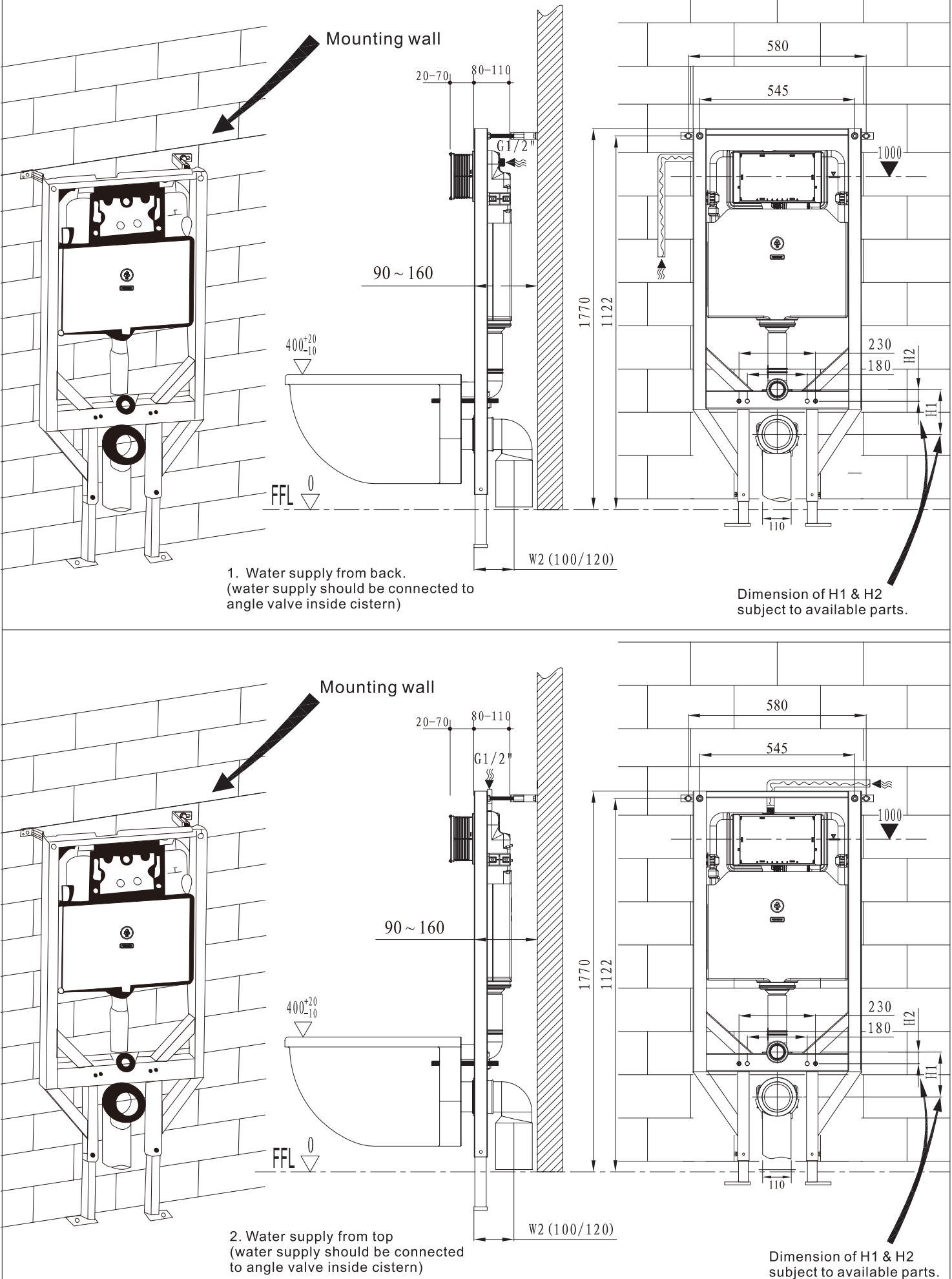
7、Mounting of installation accessories



8、Wall thickness range 20~60mm (from frame outside surface to finished wall)

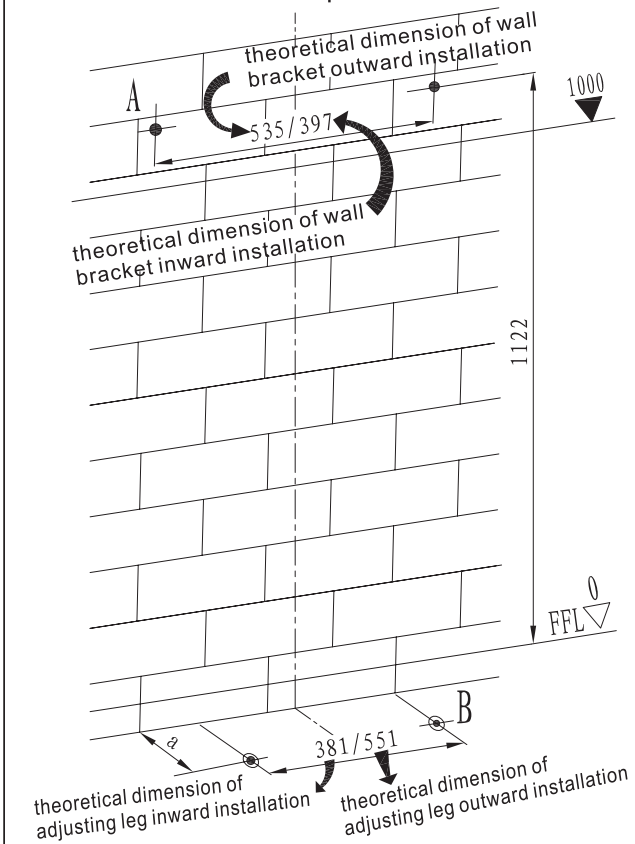


2、General dimension and water supply drawing

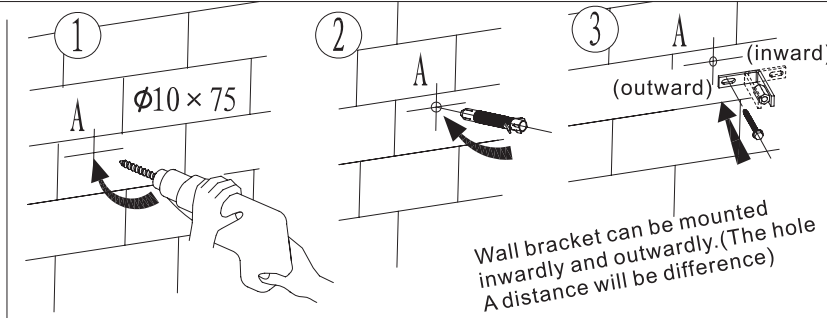




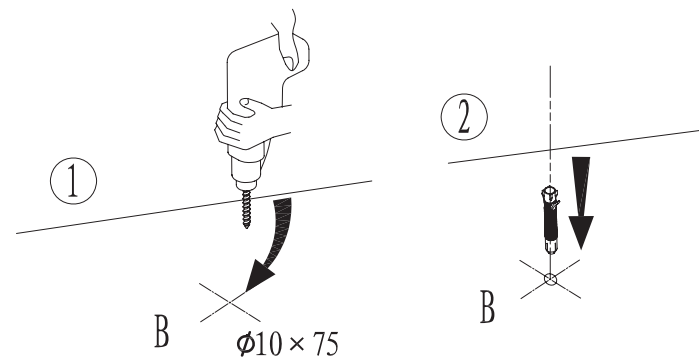
### 3、Drill holes on mounting wall and floor and install expansion screws



A dimension according to practical location of flushing pipe  
 ☆Note: Above drilling are theoretical dimensions of frame mounting.  
 Please follow by the practical location of frame.

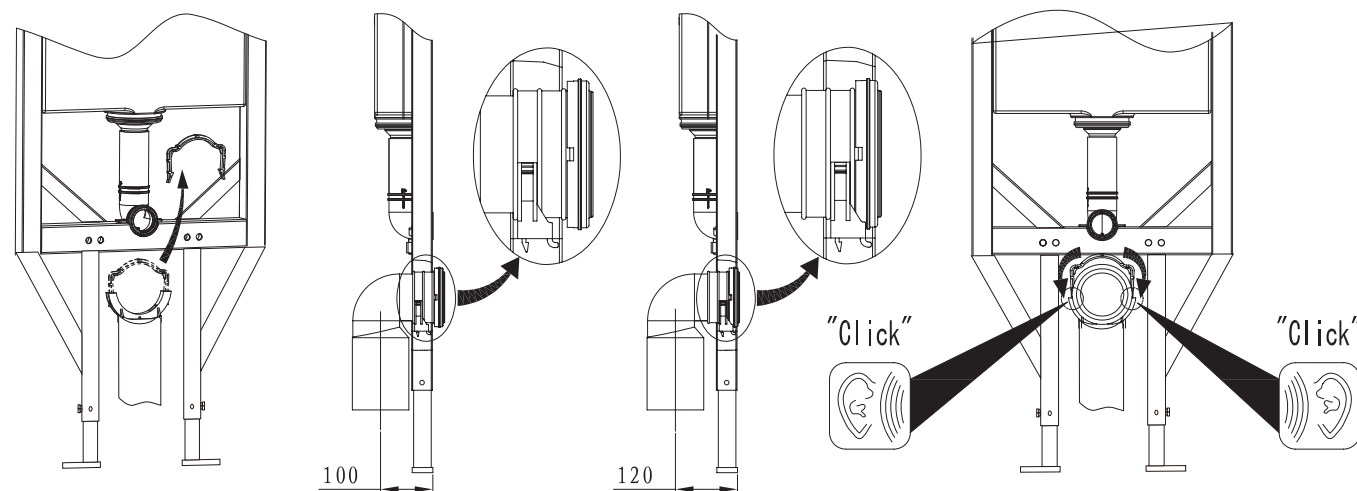


Drill a hole of Φ10 × 75 → insert expansion screw → fix the wall bracket into wall



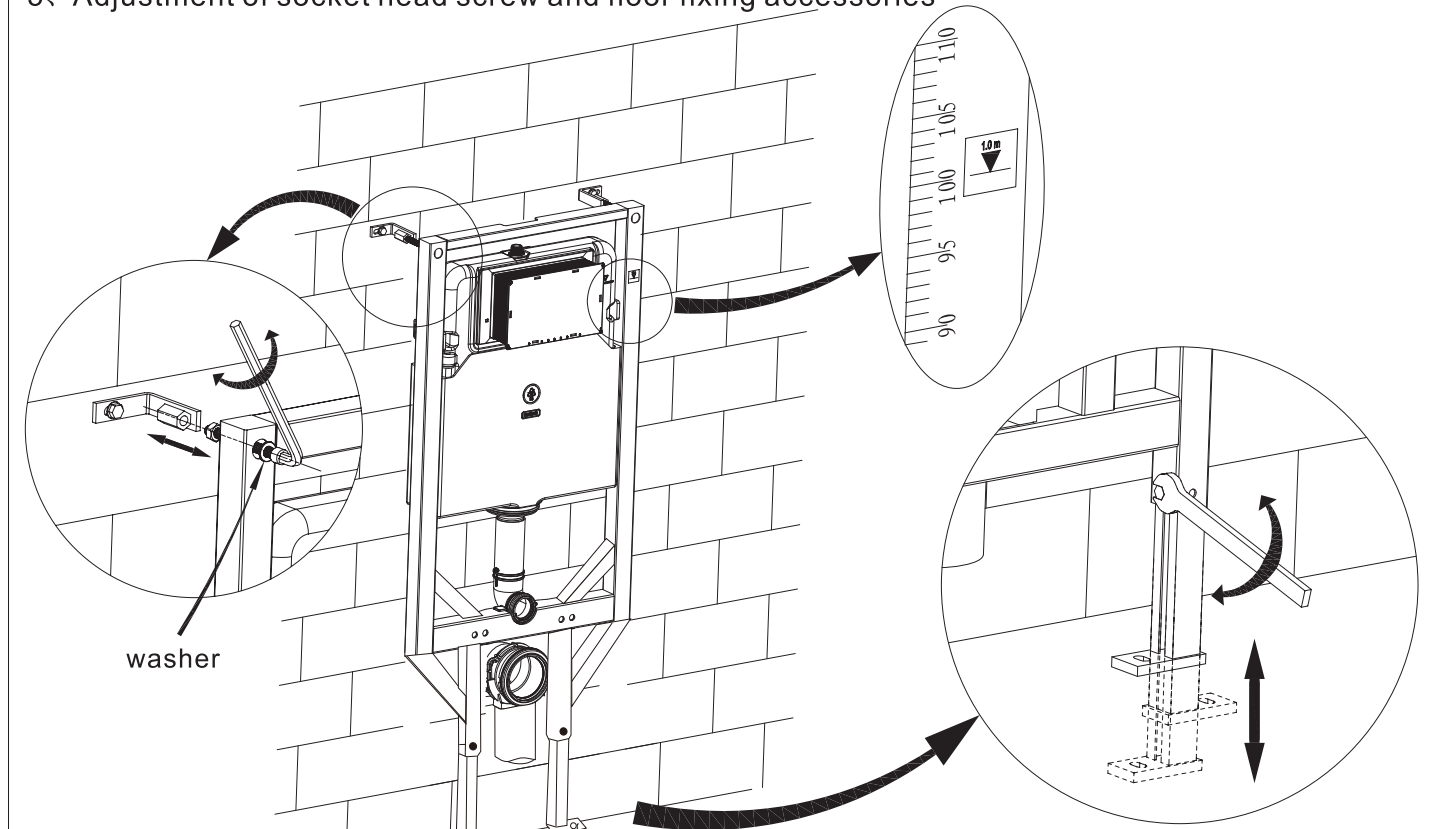
Drill a hole of Φ10 × 75 → insert expansion screw

### 4、Installation of draining syphon



Remove the mounting bracket → Mount draining syphon (optional installation distance of 100 or 120) → Fasten the mounting bracket

### 5、Adjustment of socket head screw and floor fixing accessories



### 6、Adjustment and fixation of mounting frame

