

## PEDESTAL SINK WITH BRACKETS INSTALLATION

Lift and place sink on pedestal, adjust its position against the wall and make sure it is leveled. Adjust pedestal to plumb position. Large sinks are heavy, get help lifting the sink.

Mark centerline on the floor and trace pedestal base on the floor.

Slide brackets into bottom sink's groove and hold brackets against the wall. Mark the wall at each bracket's mounting hole.

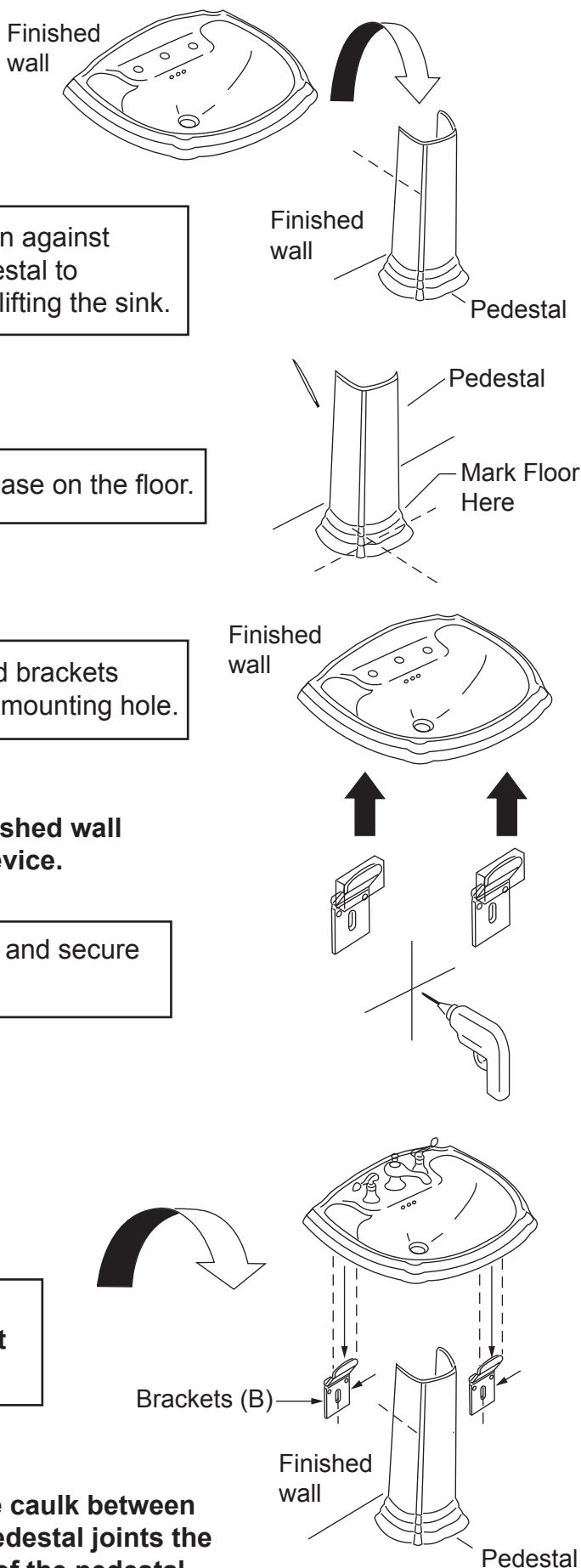
**Note:** Install sufficient backing behind the finished wall to provide a secure material for the bolting device.

Carefully remove sink from pedestal, drill holes and secure brackets to the wall. (**Do not overtighten**).

Install faucets and drains.

Carefully lift the sink into the secured brackets and on top of pedestal. Note: The lavatory **must** be supported by the brackets and pedestal.

**Optional:** It is recommended applying silicone caulk between the back of the sink and the wall, where the pedestal joins the sink and also between the floor and the base of the pedestal.





**Congratulations on your purchase of a superior quality  
Pedestal sink (with brackets) designed to be  
The centerpiece of your bathroom with built-in practical features for everyday use.  
Designed & Manufactured to ANSI spec. for the US since 1978.**

*Our pedestal sinks feature not only  
elegance in design but built-in  
functionality that allows you & your family  
the practicality of modern convenience  
without sacrificing quality & style.*

#### **Made of Grade A Vitreous China**

Our sinks are hard-fired at intense temperatures. This process allows our superior quality porcelain glazes to fuse and cure with sink molds and provide a vitreous finish that is impervious to water & other common household acids & chemicals. Our sinks do not stain like lesser grades of vitreous china sinks.

#### **Our Porcelain Glazes**

Are manufactured to provide stunning colors and designs for which we are renown worldwide. Our whites are white unlike cheaper manufacturers who settle for grayish or yellowish glazes. Our porcelain glazes do not fade with time & are scratch-resistant. Perfect for everyday wear & tear.

#### **Pedestal Sink features:**

- Space-saving design maximizes limited bathroom space
- Allows for easy bathroom cleaning
- Ergonomic design for less back strain & an easy reach to the sink & faucets
- Select between white, bone & black colors to match any bathroom décor
- Choose from a variety of faucet styles:
  - Modern single hole
  - Compact 4" center set
  - Elegant 8" widespread
- Where applicable, the supports are easily installed & include instructions
- Where applicable, the pedestal conceals unsightly pipes
- Pedestal height are easily adjustable with pedestal extenders at:  
[www.rensup.com](http://www.rensup.com)
  - 16549 4"h White, 16550 4"h Bone
  - 16551 8"h White, 16552 8"h Bone

**100's of Faucets** to choose from with solid brass construction & wide variety of finishes.

- Modern Waterfall Faucets with over 35 glass disk designs & colors to choose from
- Sleek, one hand single lever designs
- Traditional cross handles
- Vintage porcelain levers
- Ceramic Euro faucets & Cottage style faucets

**Always dreamed of a cast iron clawfoot tub!  
Visit [www.rensup.com](http://www.rensup.com) for a wide  
selection**

- Extra thick cast iron tubs 5/16" thick retain heat longer so you can soak longer!
- Authentic white porcelain glaze
- Primed & ready to be painted
- A variety of claw feet finishes

**Complete your tub's vintage look with a  
shower surround & keep water off the  
floor!**

- You can select from a floor, deck or wall mount type shower surround package
- Round or oval surrounds
- 100's of showerhead & handheld options with solid brass inner workings in a variety of finishes to match your bathroom decor:
  - Luxurious rainfall showerheads
  - Modern, avant-garde designs
  - Nostalgic telephone showerheads
- Variety of handle styles
  - Porcelain cross handles
  - Brass PVD or Chrome cross handles
  - Teardrop levers
  - Double levers

**Eco-savvy consumers know we have the  
widest selection of environmentally sound  
toilets!**

At [www.rensup.com](http://www.rensup.com) we have:

**Over 45 Dual Flush Toilets** to choose from with the latest **Dual-Flush Technology**

- Which puts you in control of your water consumption
- Choose from both 0.8 & 1.6 gallon flush at the touch of a button
- Lowers water usage & saves you money
- Modern sleek designs to toilets with an Old World style & vintage flair

**Over 350 High-tank Toilets & Conversion Kits** that allow you to have that Old World charm

- Yet take advantage of water saving technology
- Are adjustable to accommodate various size bathrooms
- Come in a variety of colors & finishes



These instructions and drawings disclose confidential and other data of proprietary nature owned by **Renovator's Supply Inc.** and may not be used or disclosed to others without the prior written consent of **Renovator's Supply Inc.**  
Renovators Supply, Inc.©