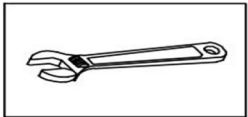
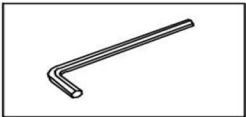


Desk Installation

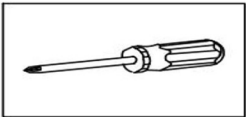
Tools You Will Need: Tools You May Need



Adjustable wrench



Hexagon wrench



Phillips Screwdriver

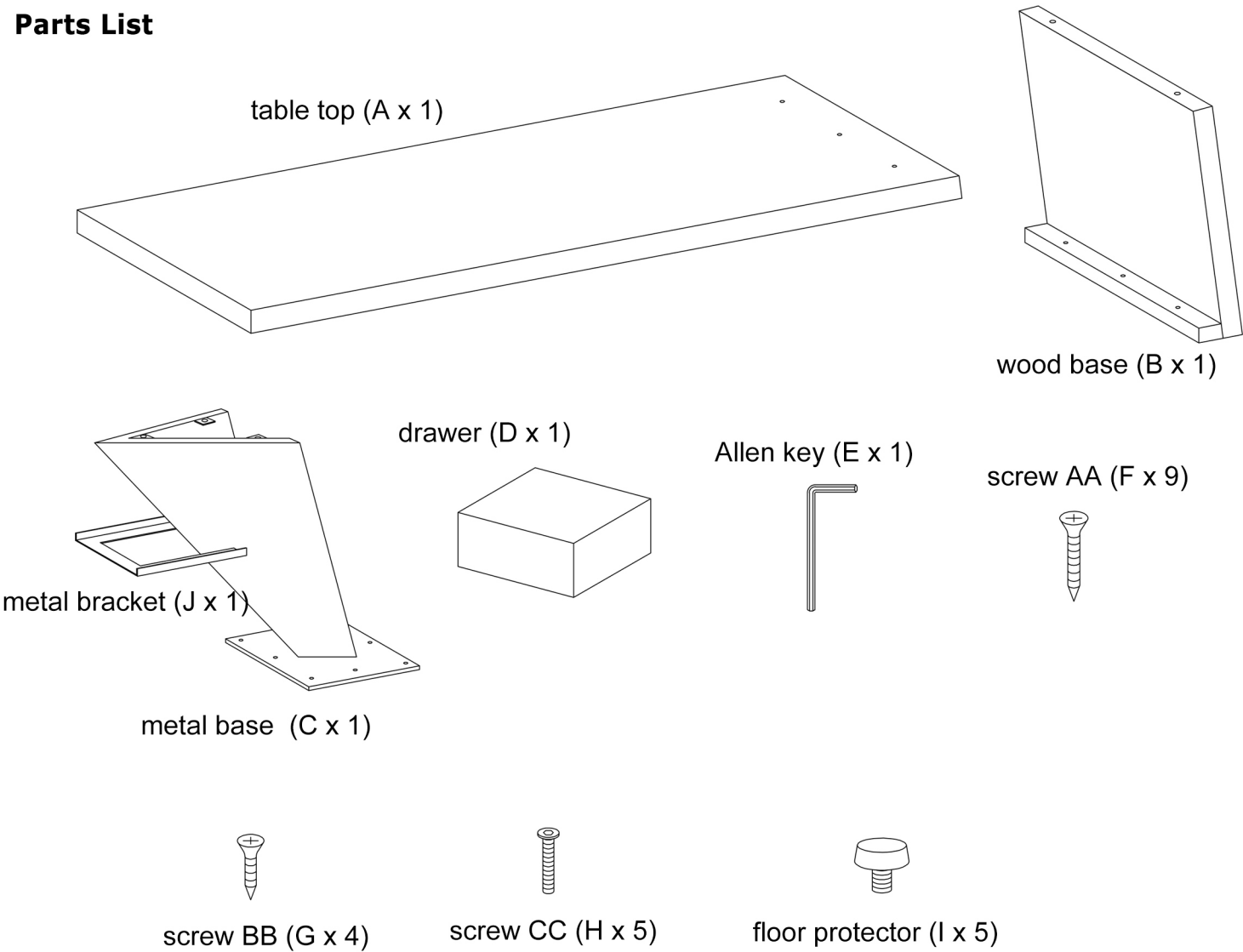
Before the Installation

- 1. Do not throw away packing materials until assembly is complete for small parts may come loose inside the carton during shipment. If parts are missing, please contact us.
- 2. Assemble this item on a soft surface, such as carpet to protect the finish.
- 3. Proper assembly of this item requires 2 people.
- 4. Periodically check to ensure that all connections are tight.
- 5. It is recommended that installation of the product be done by a qualified licensed furniture assembler.

Care and Cleaning

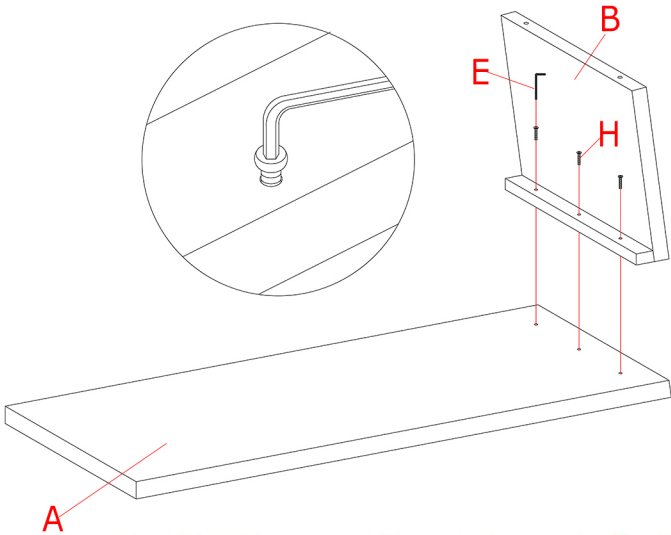
- 1. To protect the finish, avoid use chemicals and household cleaners.
- 2. All hot serving dishes should be placed on a pad.
- 3. Any liquid spilled onto the top should be cleaned up immediately with a damp cloth.

Parts List

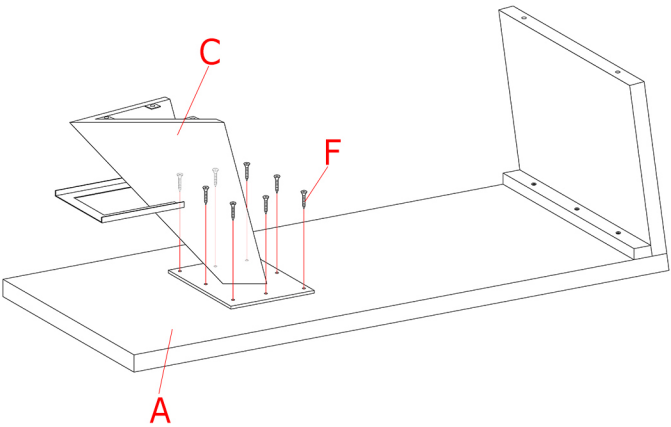


Note: Do not fully tighten all bolts until all parts are in place. Failure to follow these instructions may cause the bolt to misalign during assembly.

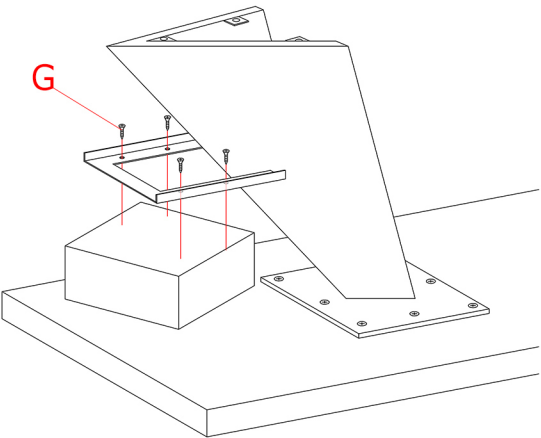
Installation Guide



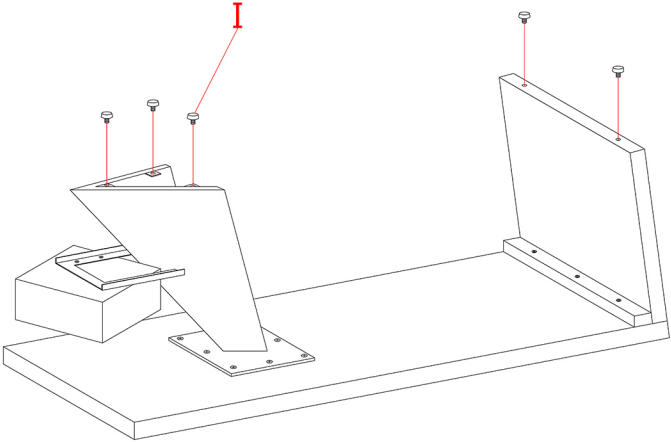
1. Turn the table top (A) upside down. Place the wood base (B) onto the table top and align the mounting holes. Screw in screws CC (H) and fix with Allen key (E).



2. Place the metal base (C) onto the table top (A) appropriately and fix with screws AA (F)



3. Install the drawer to the metal bracket with screws BB (G).



4. Screw in the floor protectors (I) and adjust the protector to level the desk.