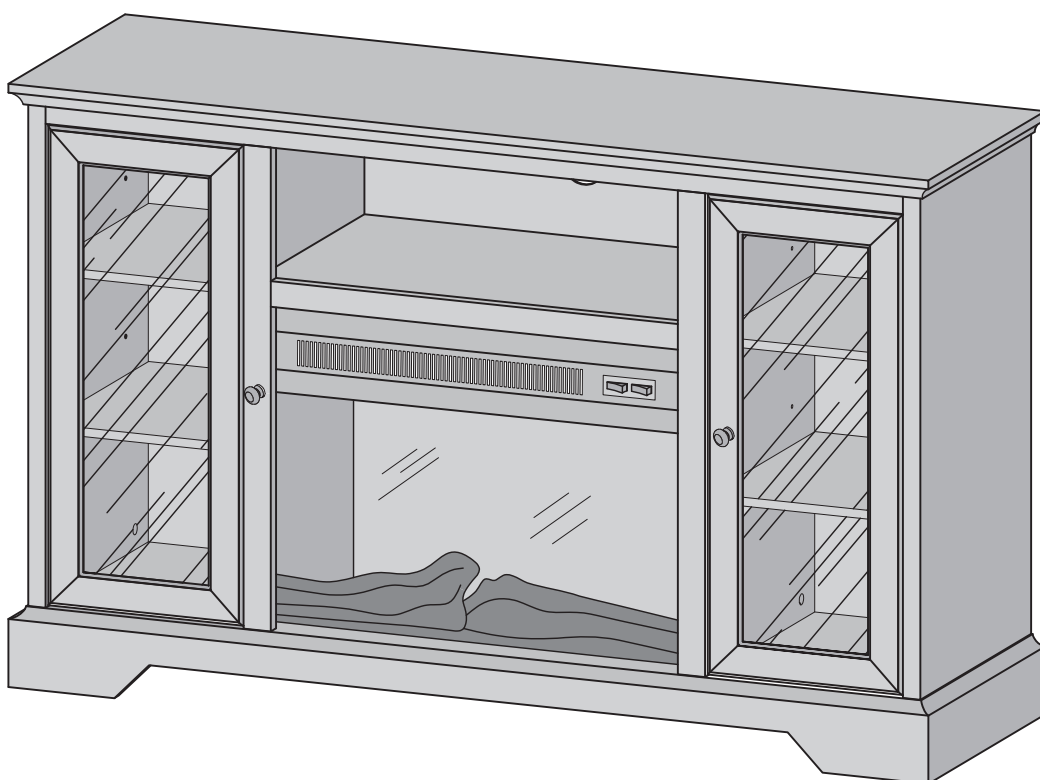




Item # : W52FP32
Assembly Instructions

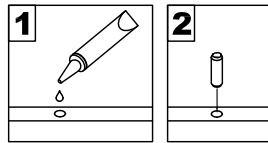


*Please visit our website for the most current instructions, assembly tips, report damage, or request parts. **www.walker-edison.com***

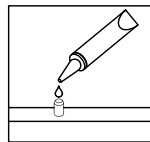
Revised 03/2017

General Assembly Guidelines

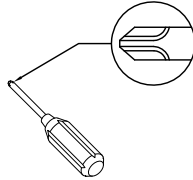
- I. Ensure that all parts and hardware are available before beginning assembly.
- II. Follow each step carefully to ensure the proper assembly of this product.
- III. Two people are recommended for ease in the assembly of this product.
- IV. The three main types of hardware used to assemble this product are : wood dowels , screws and bolts.
- V. The provided glue is to secure wood dowels in place . When first inserting dowels , locate the appropriate hole for the dowel , place a small amount of glue in the hole and insert the dowel . Wipe away excess glue immediately.



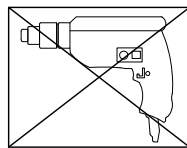
In future assembly steps when dowels are necessary to attach assembly parts together , place a small amount of glue on the end of the dowel before attaching parts together . Wipe away excess glue immediately.



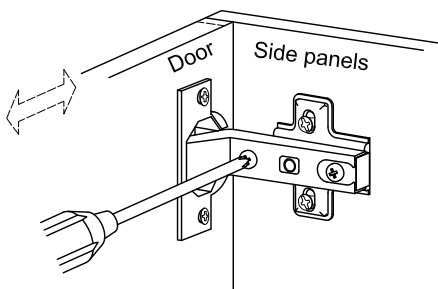
- VI. A Phillips head screwdriver is required for the assembly of this product .



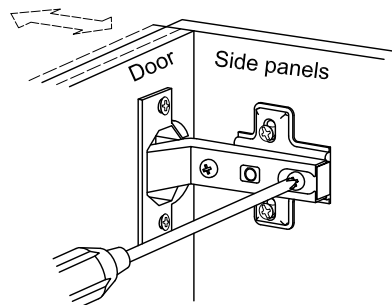
- VII. Power tools should not be used to assemble this product .



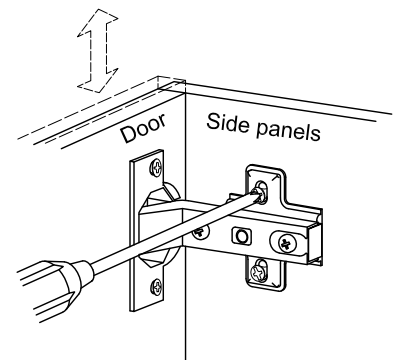
- VIII. Concealed hinges are three-way adjustable.



Horizontal
by screw adjustment

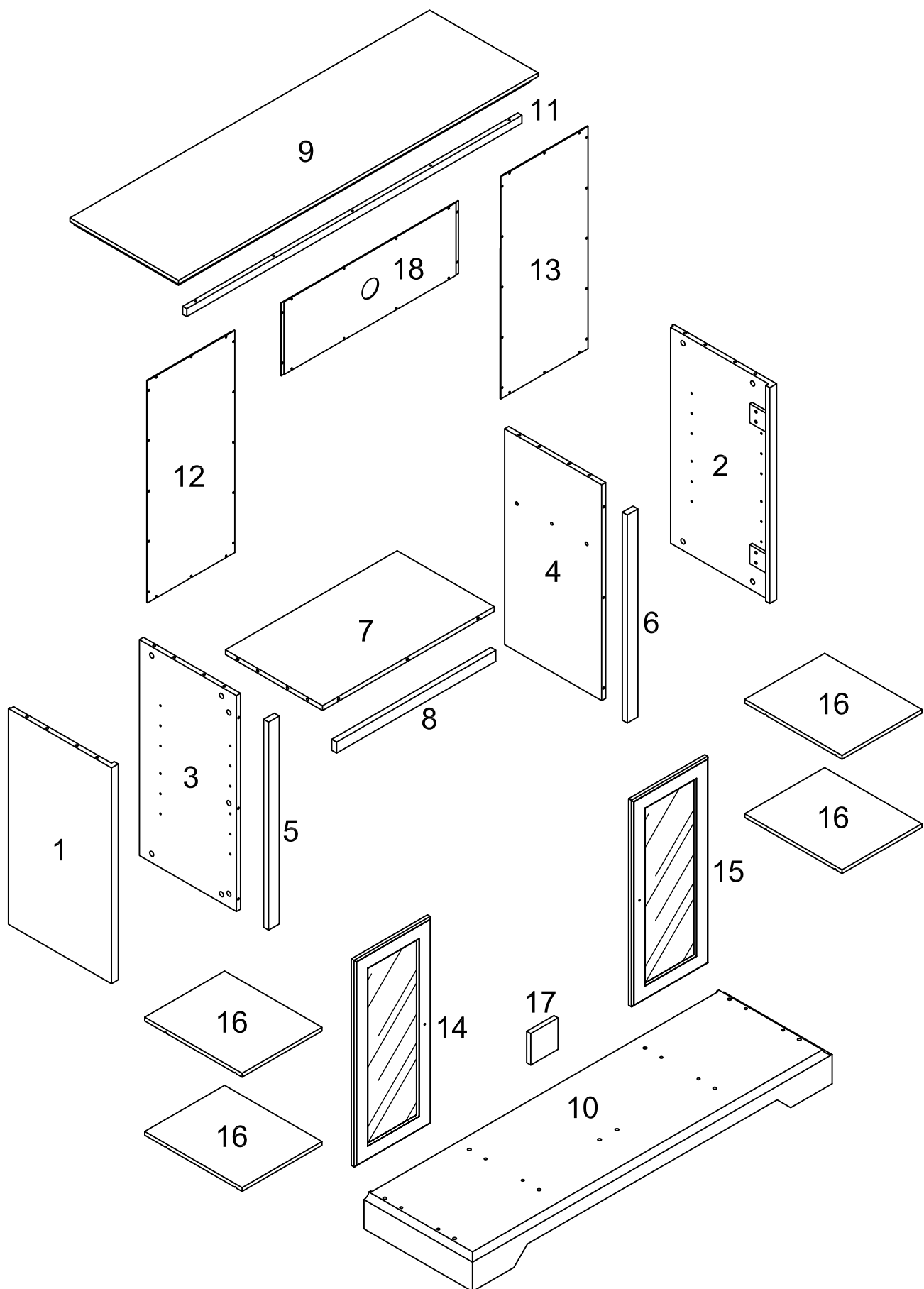


In-and-Out
by loosening the hinge-arm
mounting screw or via cam
adjustment


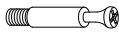

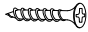


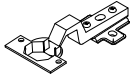
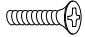

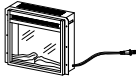
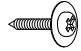



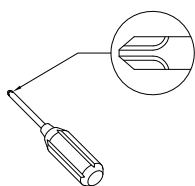
Vertical
Via slots in the mounting
plate or via cam adjustment

Parts List



Hardware List

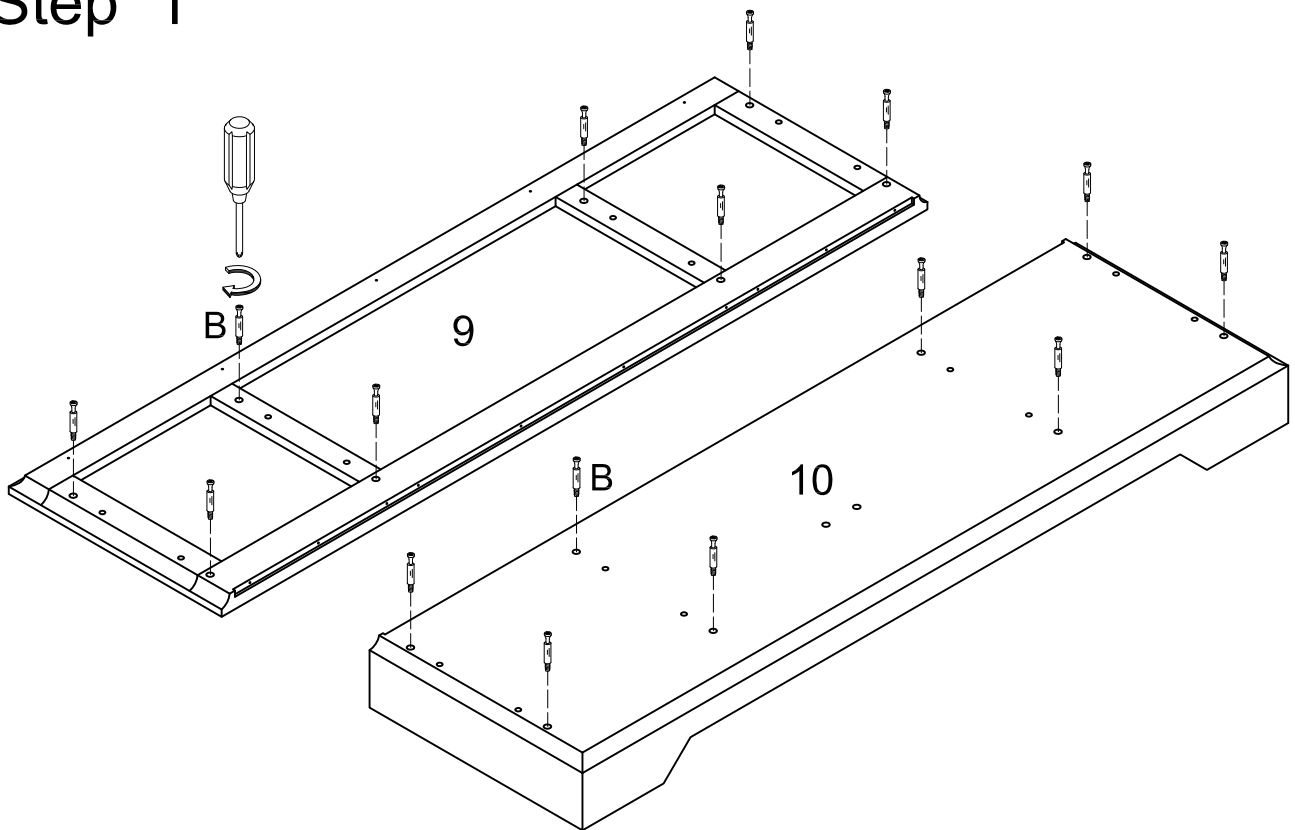
| | | | | |
|---|---|----------|-------------------------------|--------|
| A |  | Ø8x30mm | Wooden dowel | 20 pcs |
| B |  | Ø6x32mm | Cam bolt | 31 pcs |
| C |  | Ø15x12mm | Cam lock | 31 pcs |
| D |  | Ø4x30mm | Screw | 5 pcs |
| E |  | Ø25x17mm | Handel | 2 pcs |
| F |  | Ø4x20mm | Bolt | 2 pcs |
| G |  | | Hinge | 4 pcs |
| H |  | Ø4x12 | Bolt | 16 pcs |
| J |  | | Shelf support pin | 16 pcs |
| K |  | | Fireplace Insert (F23V60L) | 1 pc |
| L |  | Ø3x12 | Screw | 46 pcs |
| M |  | Ø30 | Sticker | 31 pcs |
| N |  | | Glue tube | 1 pc |



Philips head screwdriver required for assembly
(not included)

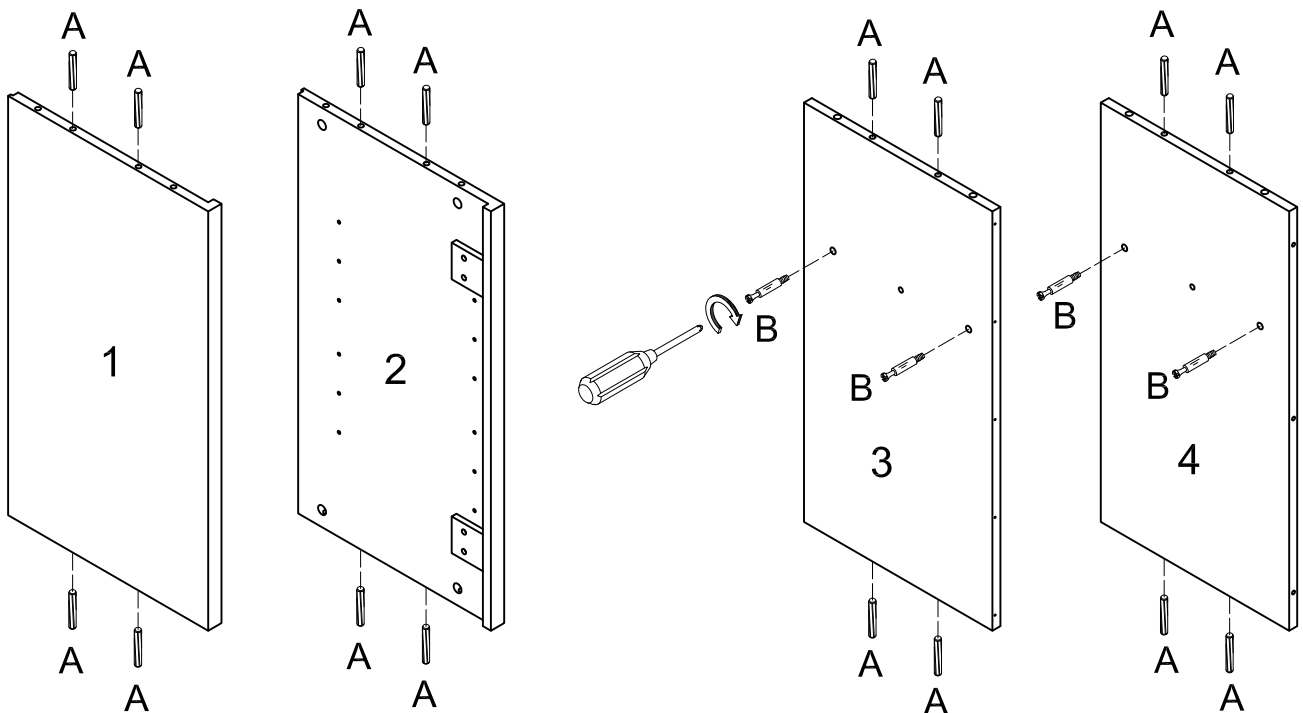
*The hardware quantities listed above are required for proper assembly.
Some extra hardware may also have been included.*

Step 1



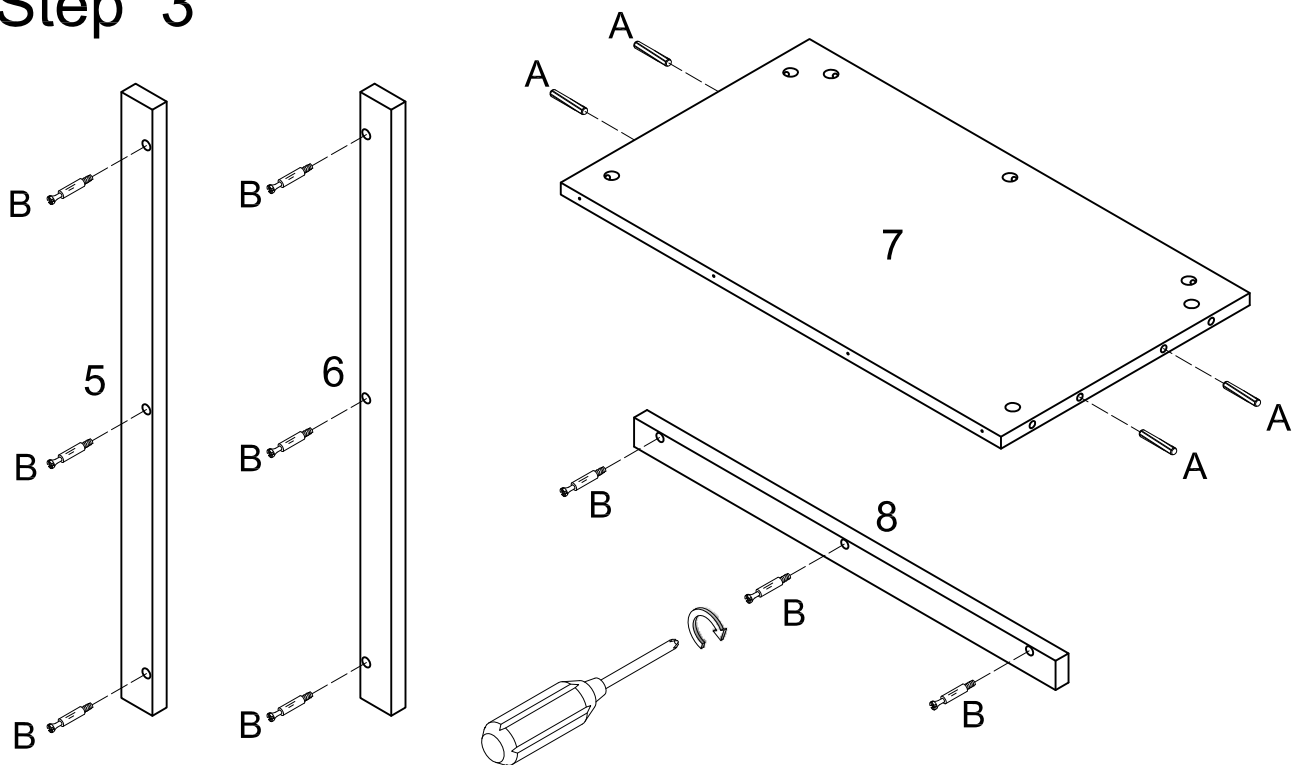
Attach cam bolts (B) to parts (9) and (10).

Step 2



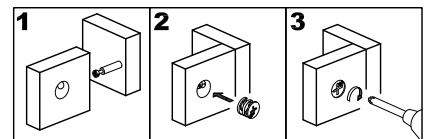
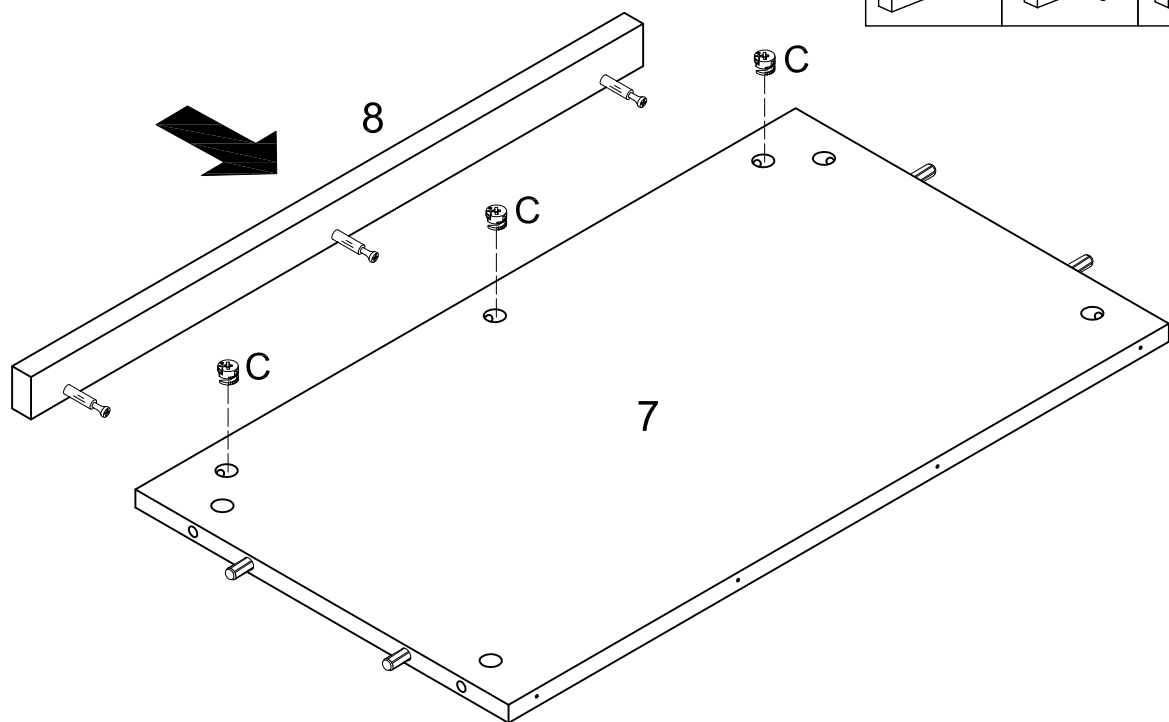
Attach cam bolts (B) to part 3 and 4. Insert wooden dowels (A) into parts (1,2,3,4).

Step 3



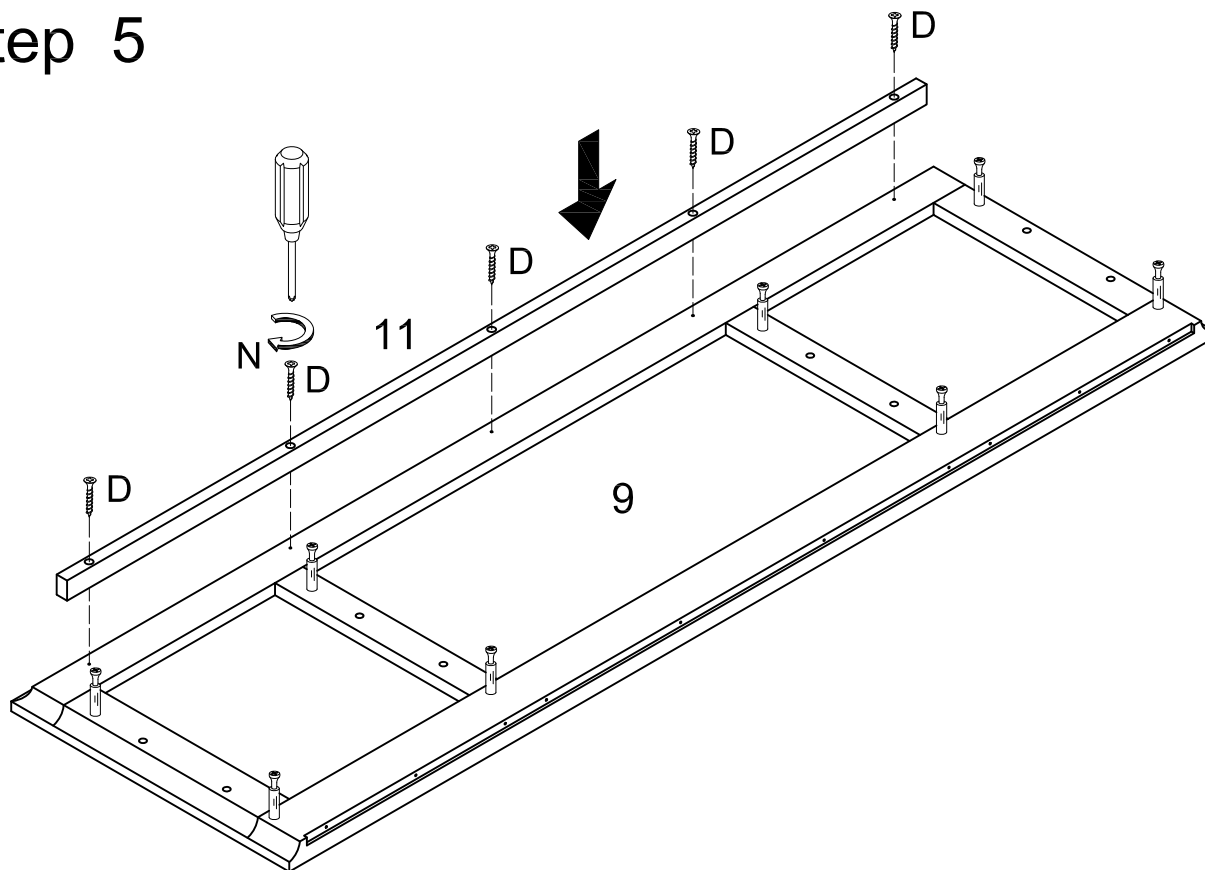
Attach cam bolts (B) to parts (5,6), and (8). Insert wooden dowels (A) into part (7).

Step 4



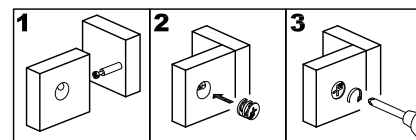
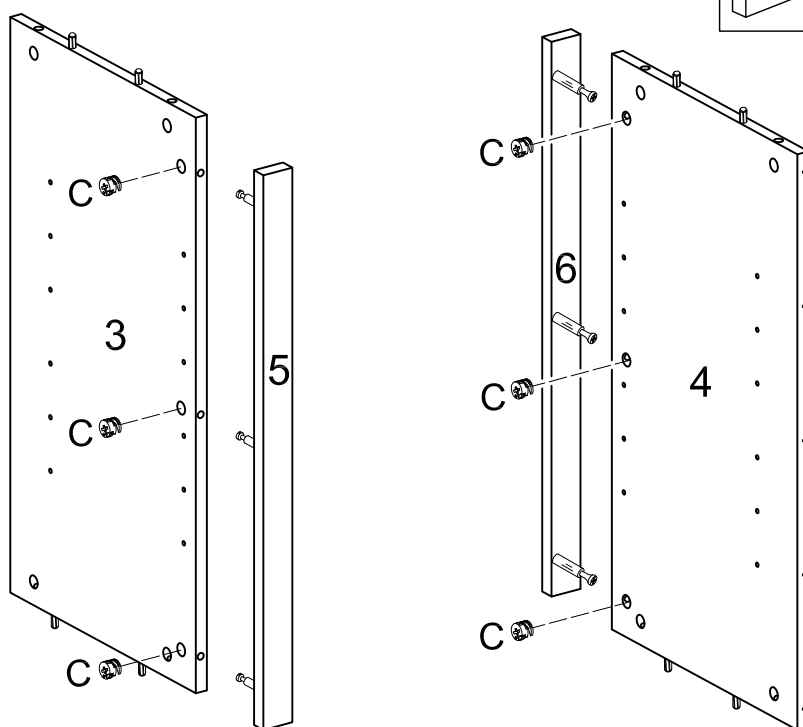
Insert cam locks (C) to part (7) to connect part (7) and part (8) as shown in the diagram.

Step 5



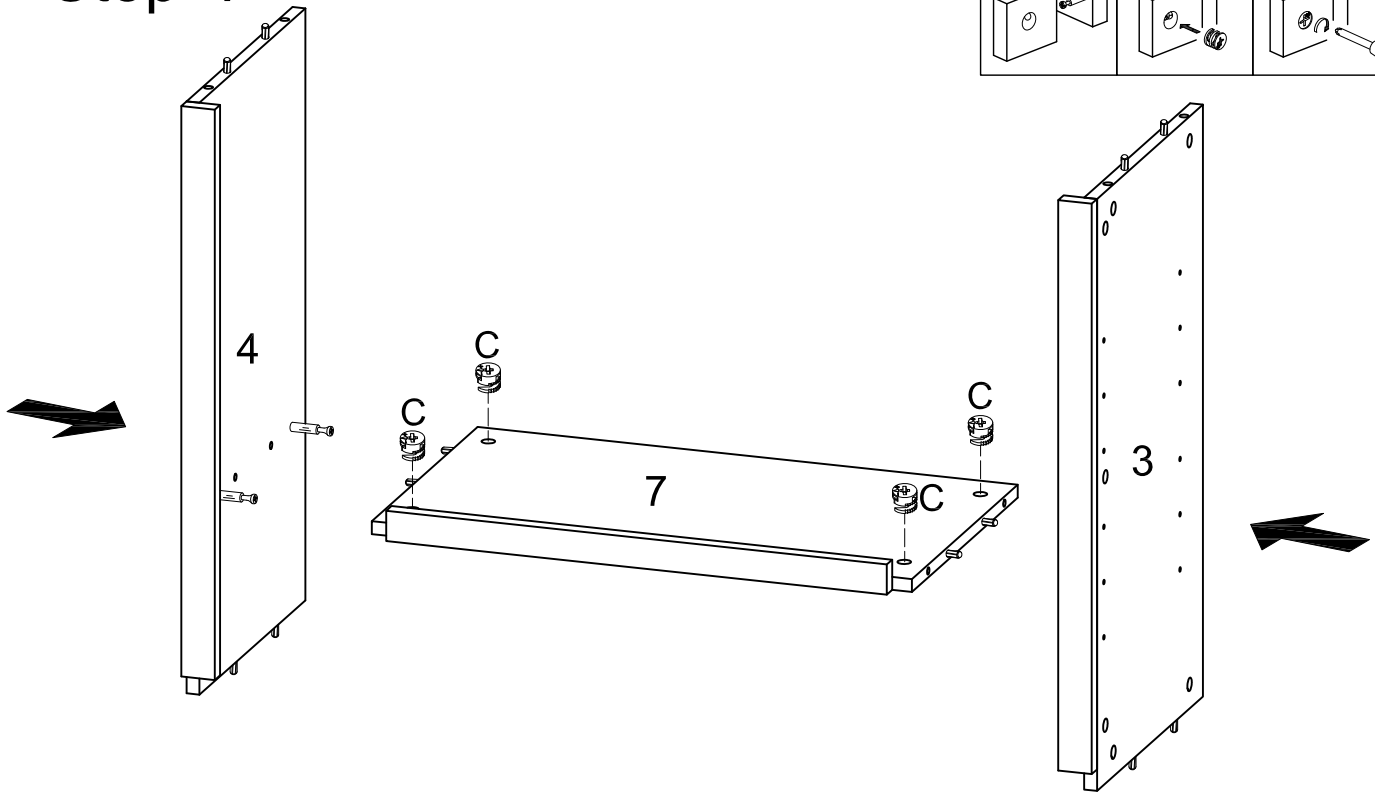
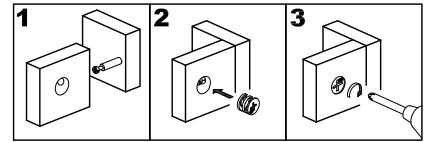
Secure part (11) to part (9) using screws (D) as shown.

Step 6



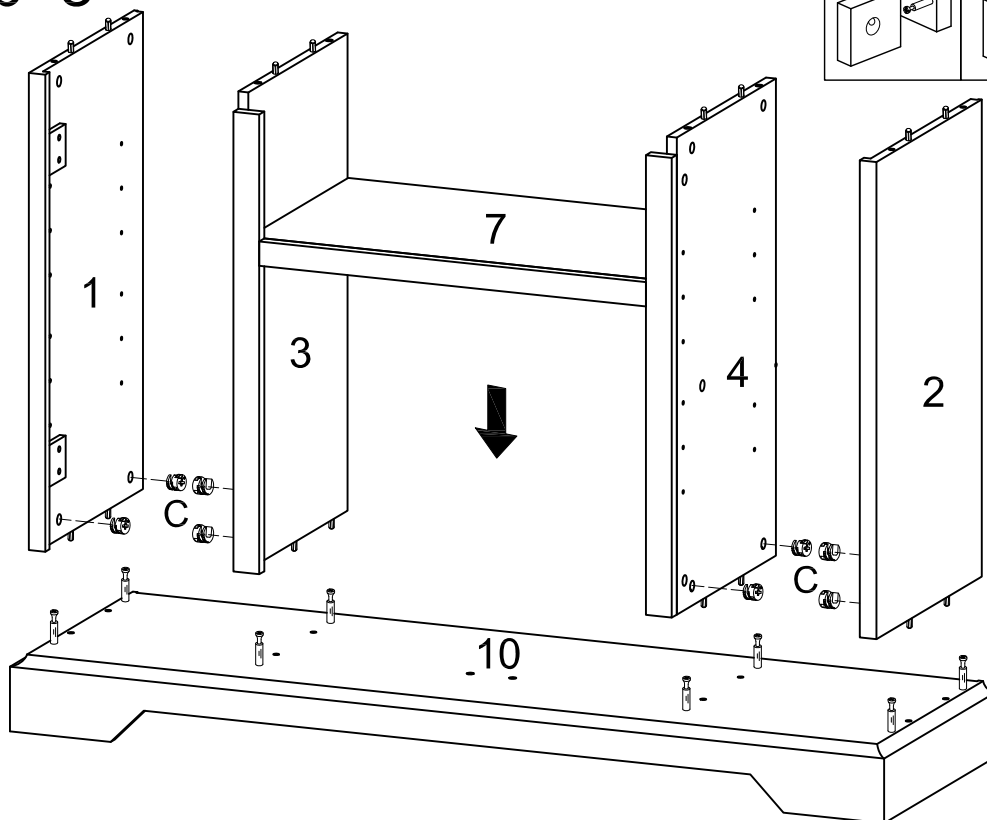
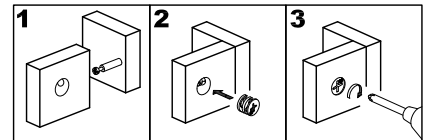
Insert cam locks (C) to parts (3) and (4) to connect to part (5) and part (6) as shown in the diagram.

Step 7



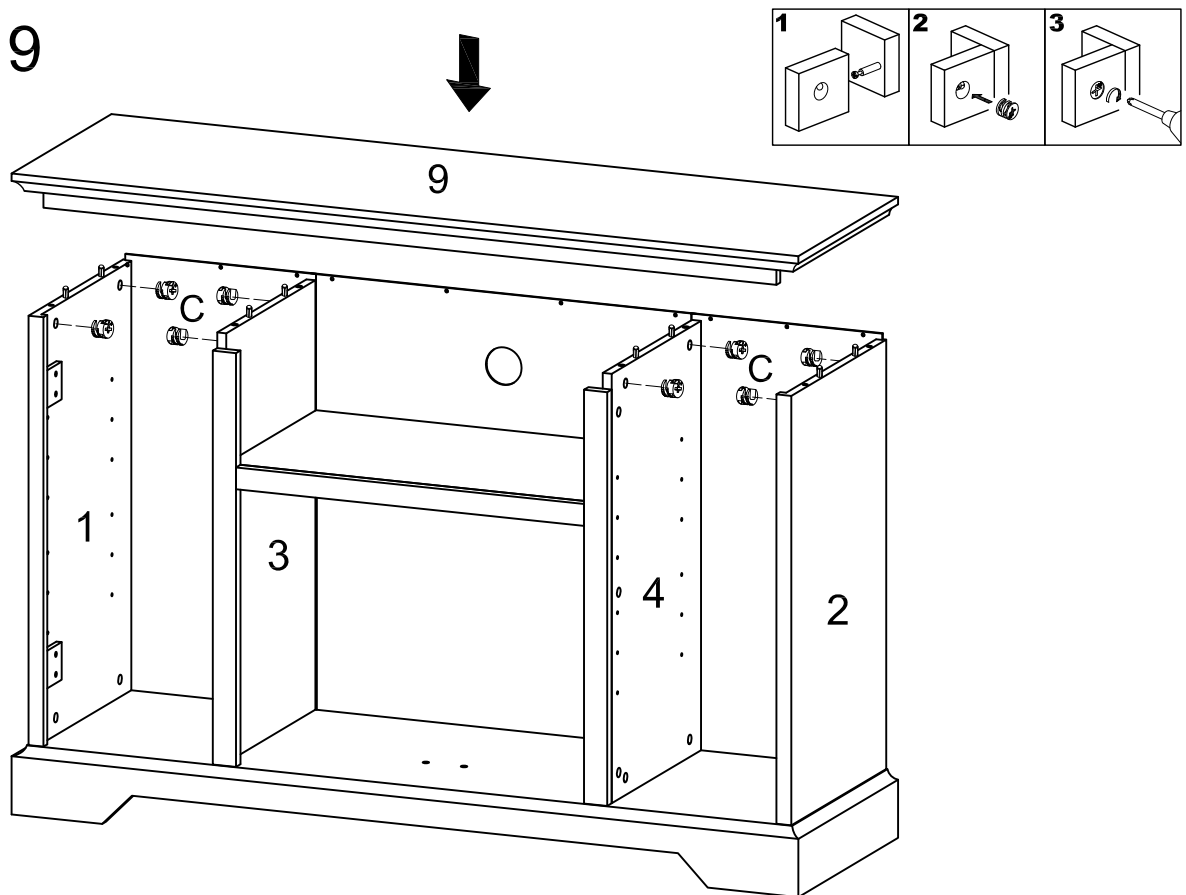
Insert cam locks (C) to part (7) and connect to part (3) and part (4) as shown in the diagram.

Step 8



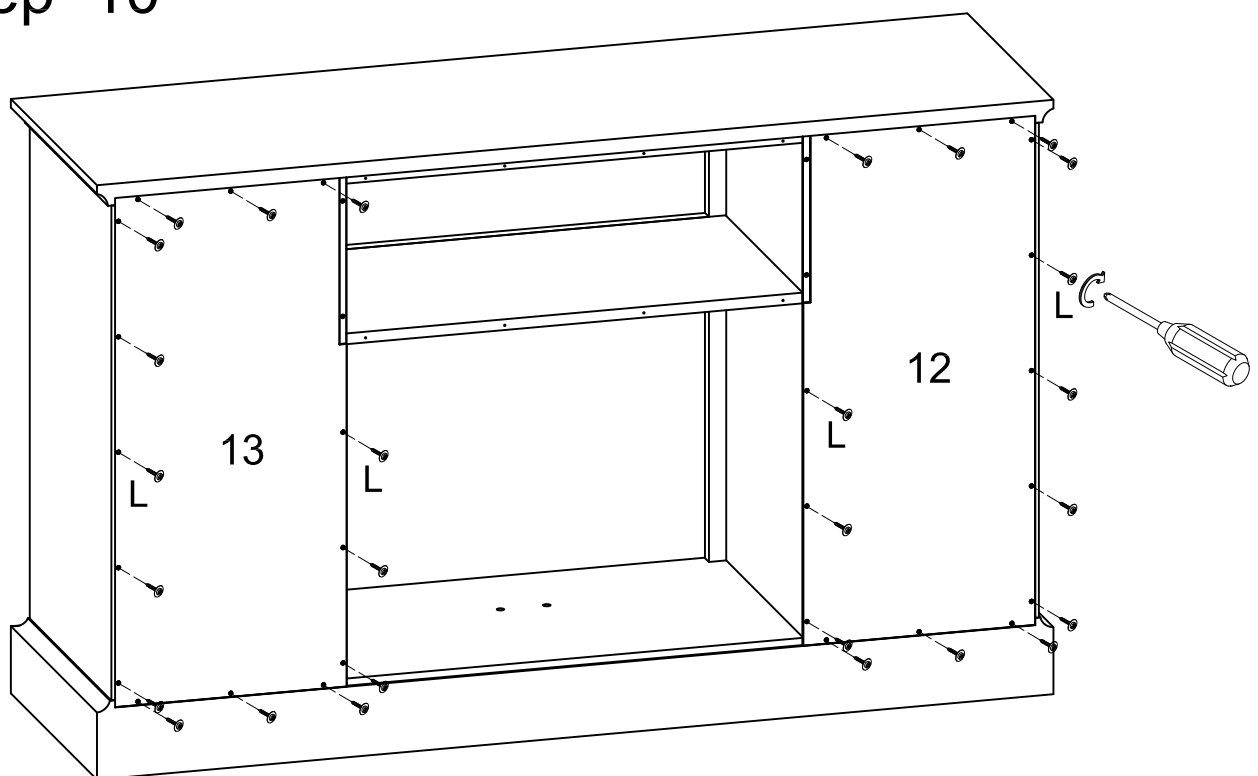
Insert cam locks (C) to parts (1,2,3,4) to connect to part 10 as shown in the diagram.

Step 9



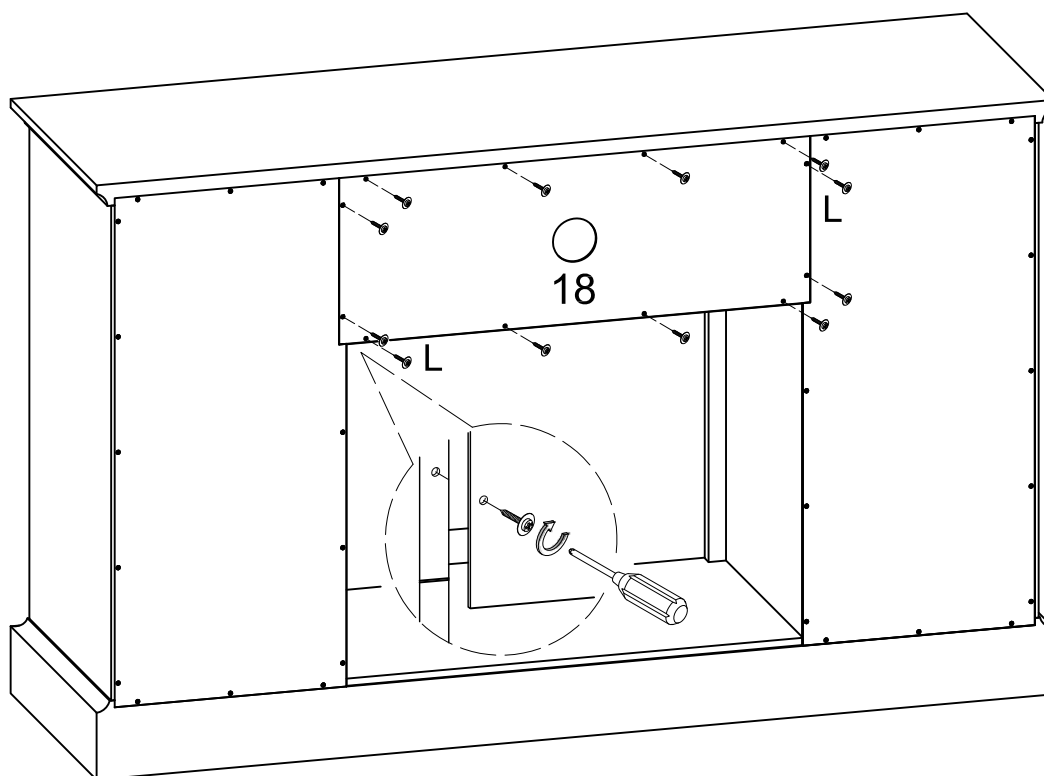
Secure part (9) to frame assembly using cam locks (C) as shown.

Step 10



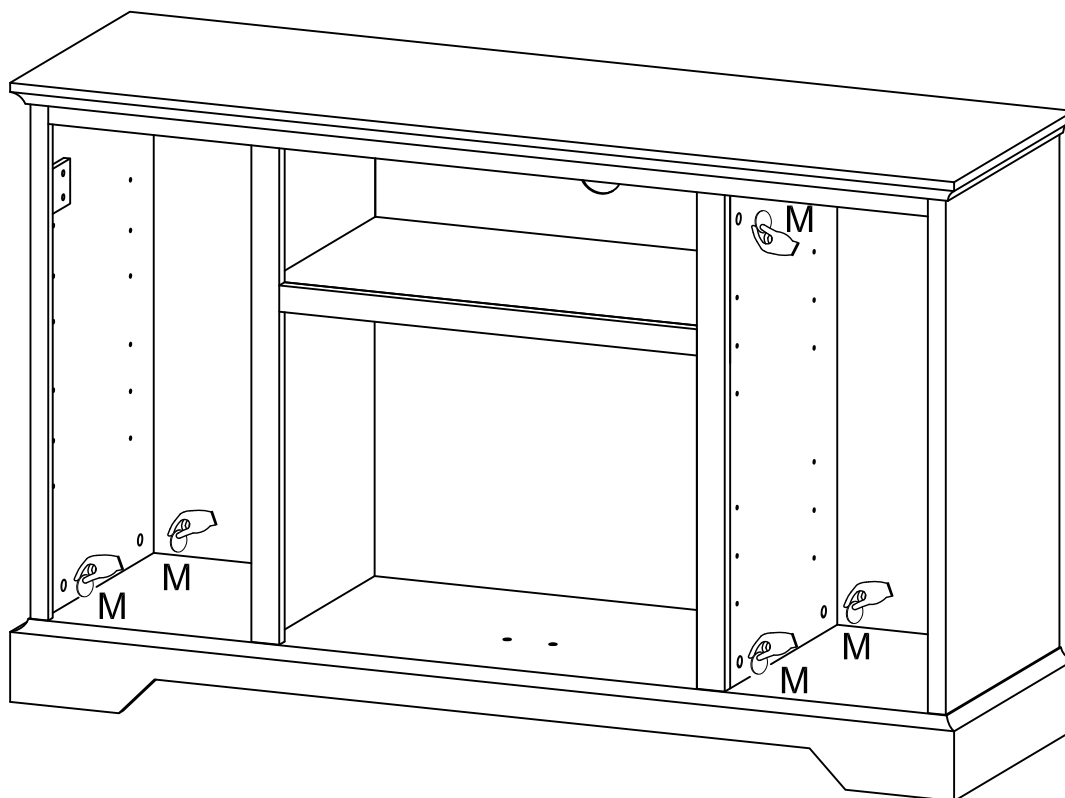
Attach back panels (12,13) to frame using screws (L) as indicated.

Step 11



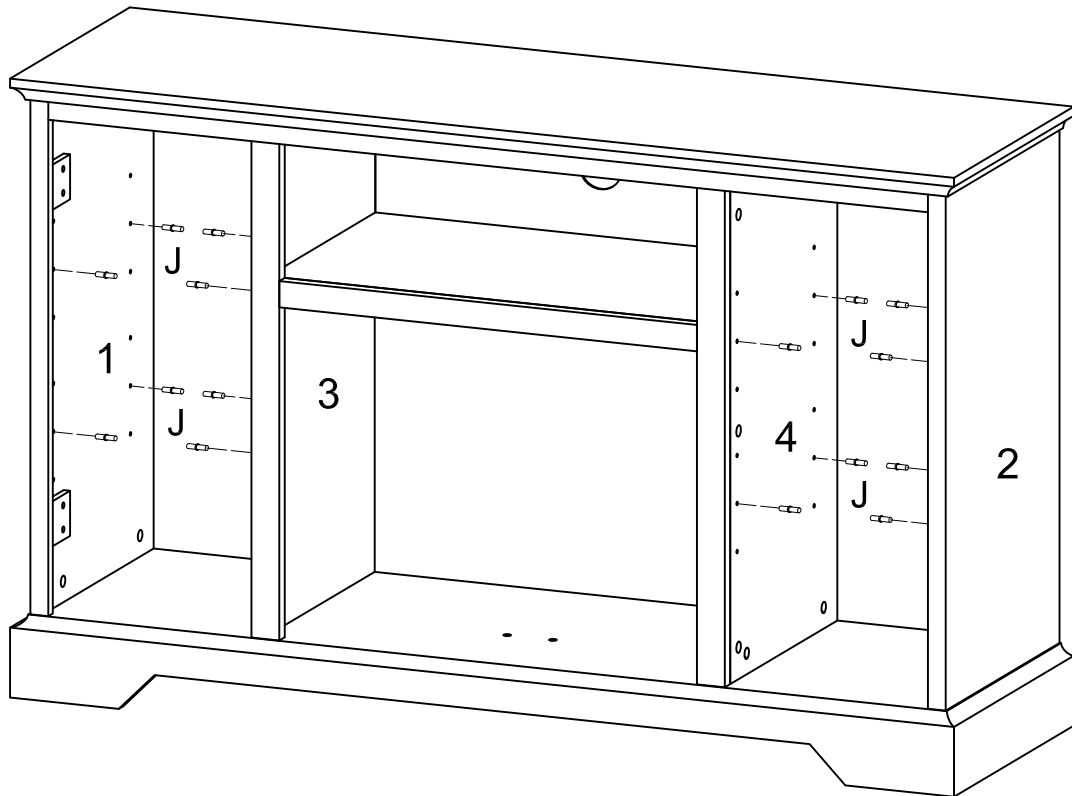
Attach back panel (18) to frame using screws (L) as indicated.

Step 12



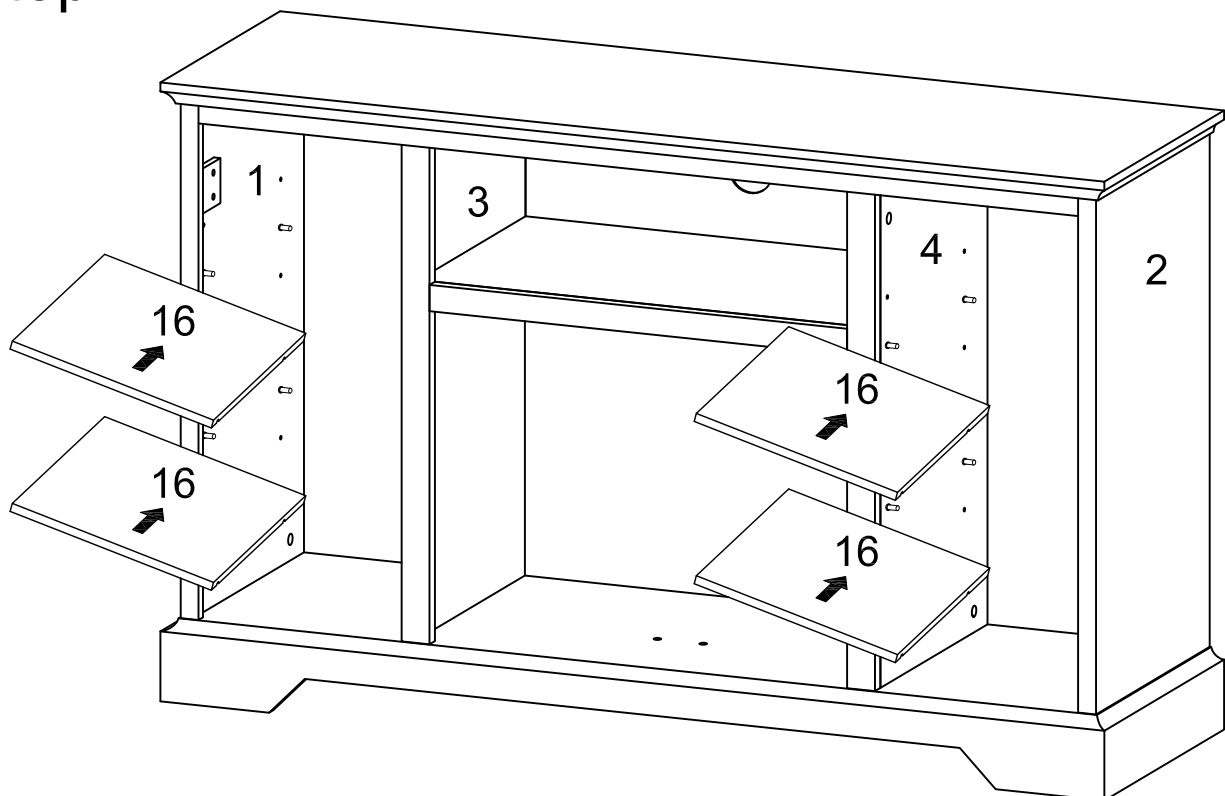
Place stickers (M) in designated areas as shown in the diagram.

Step 13



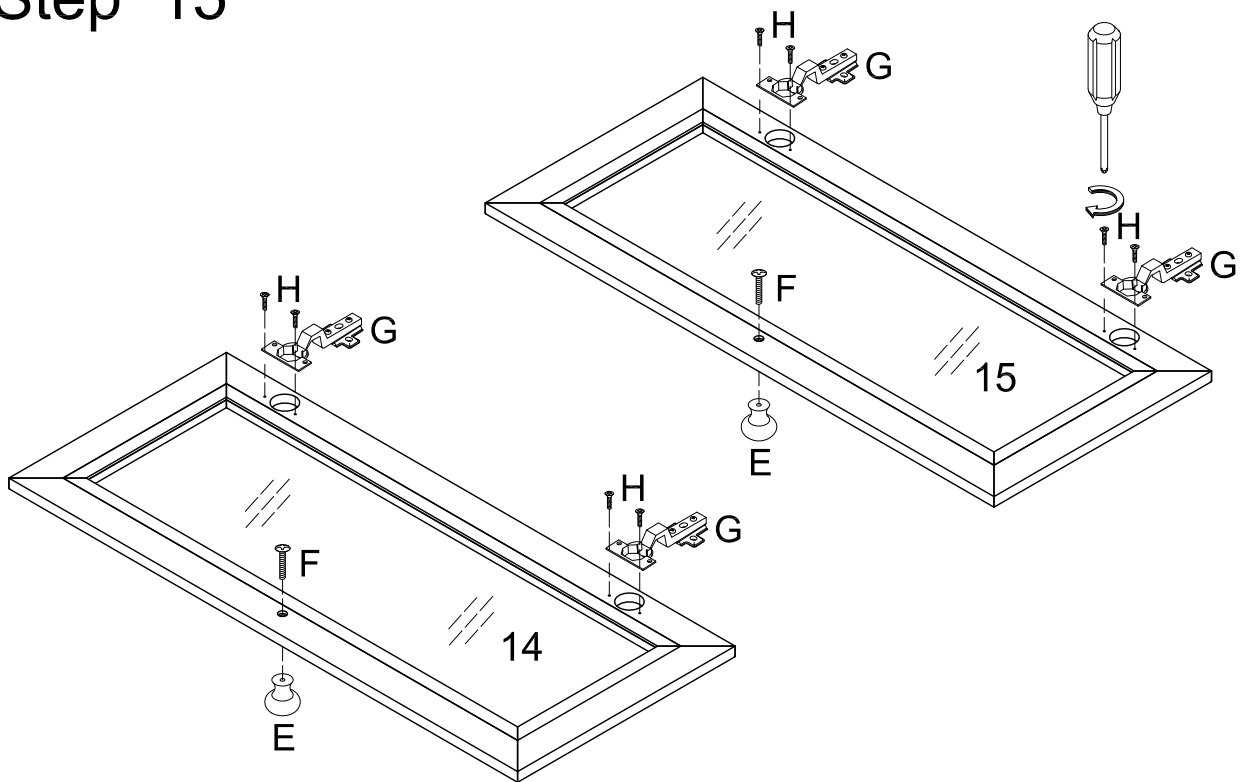
Insert shelf supports (J) as shown in the diagram.

Step 14



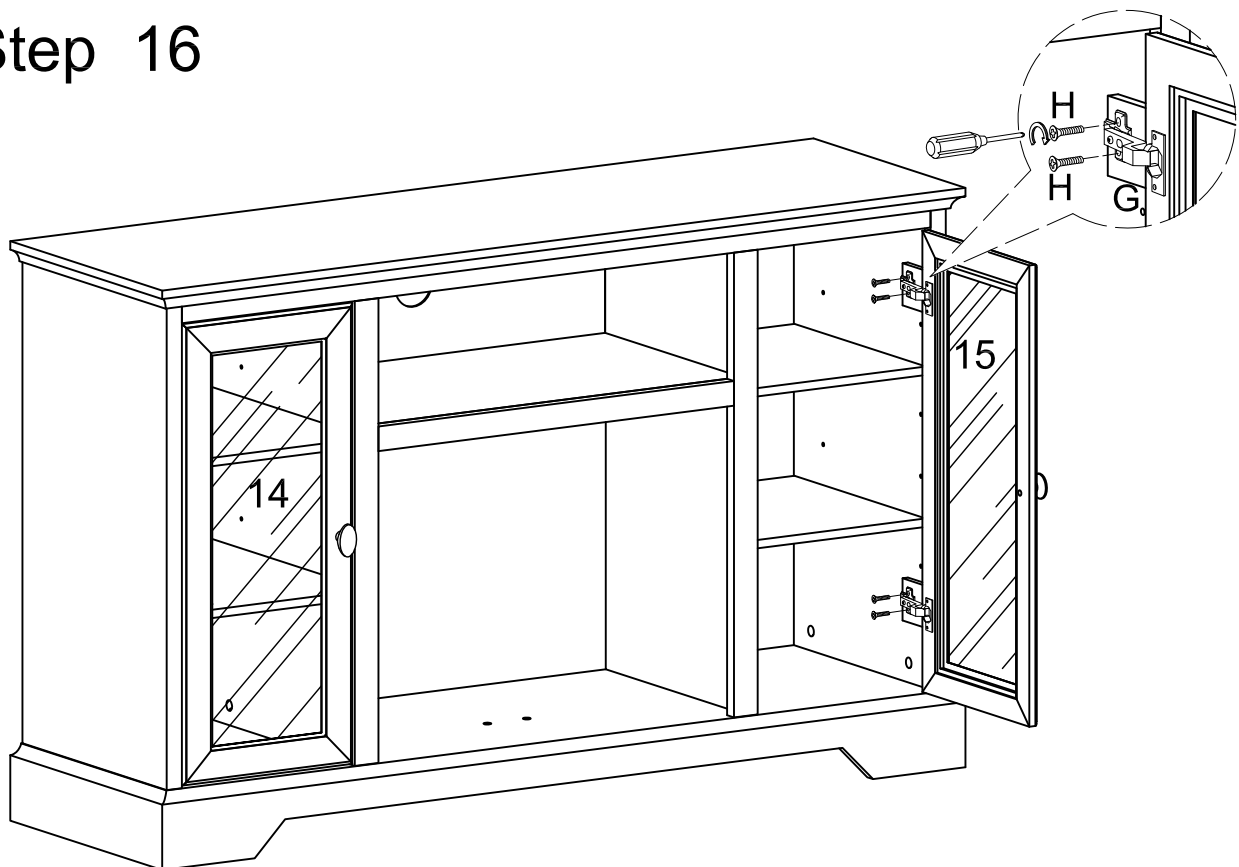
Carefully place shelves (16) unto the shelf supports.

Step 15



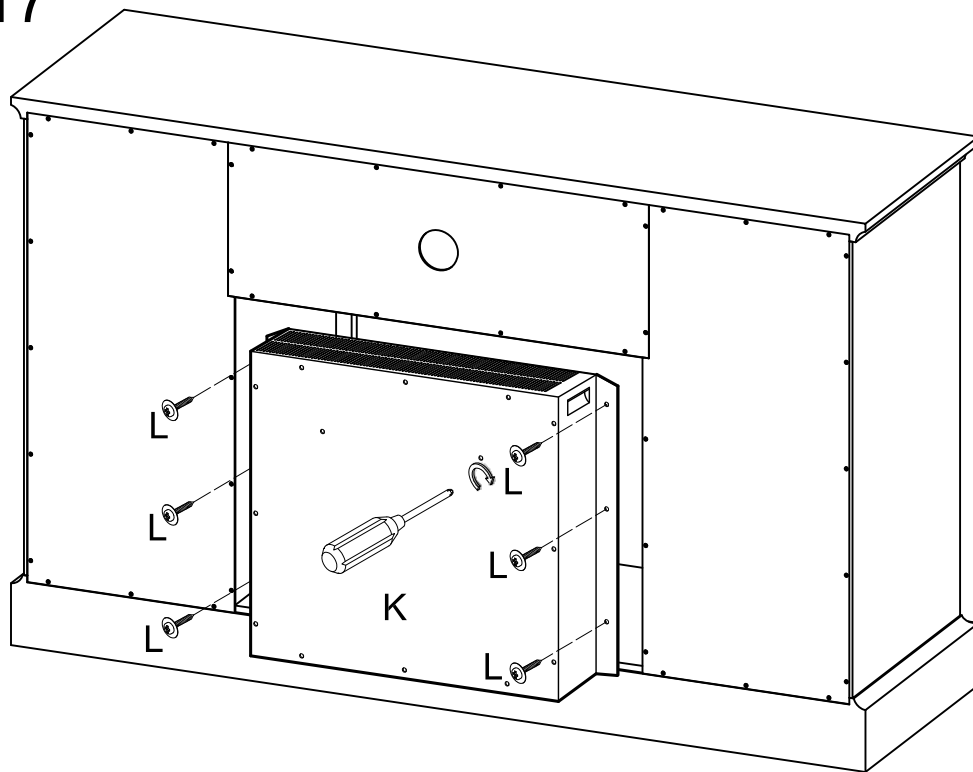
Secure hinges (G) to doors 14 and 15 using screws (H). Attach handles (E) with screws (F).

Step 16



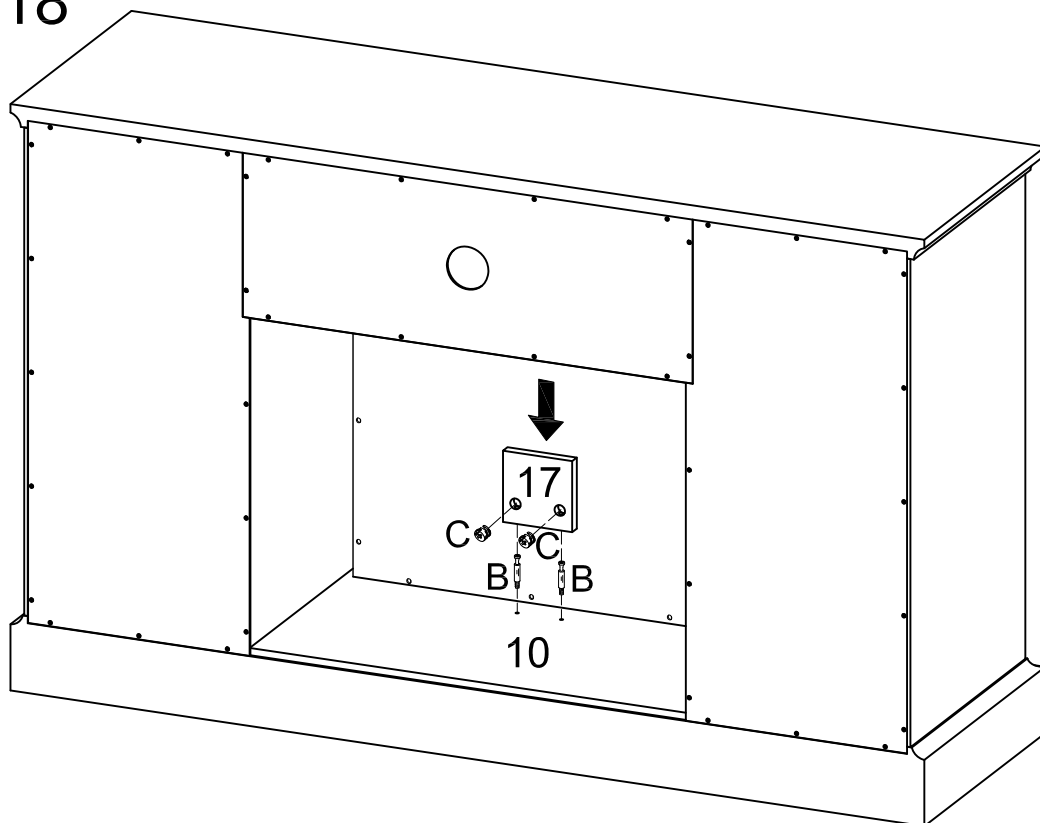
Attach doors to assembled frame using screws (H) as shown in the diagram.

Step 17



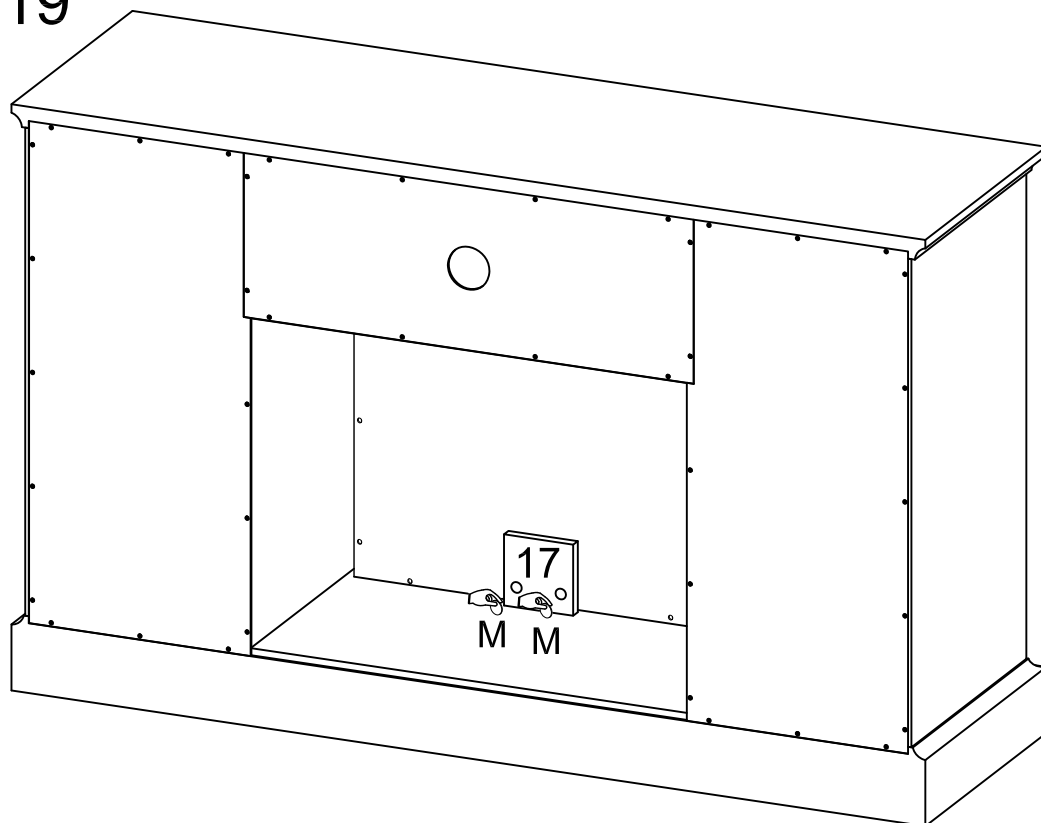
Insert fireplace (K) to the front by sliding it through the back of the unit and attach by using screws (L).

Step 18



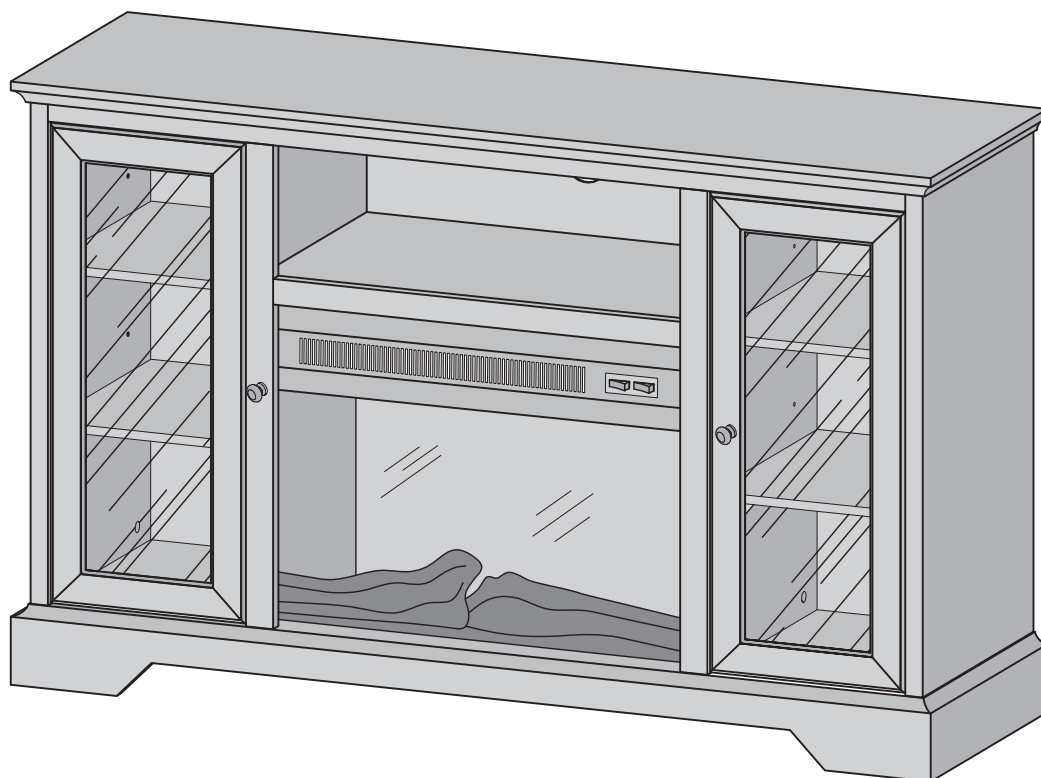
Attach part (17) behind the fireplace unit by using cam bolts (C) and cam bolts (B).

Step 19



Place stickers (M) in designated areas as shown in the diagram.

Step 20



Final Assembly