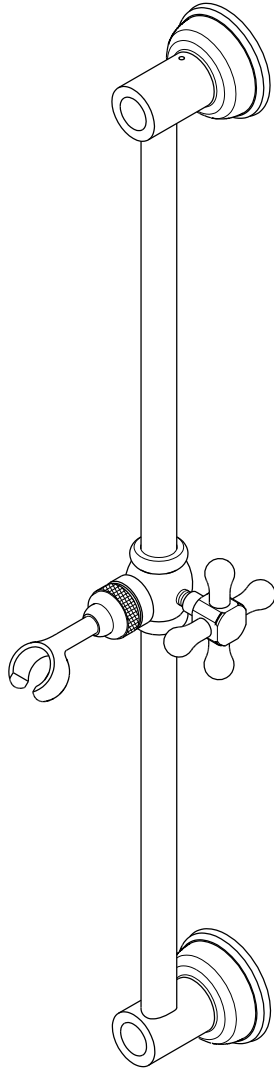


KINGSTON BRASS

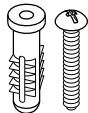
THE TRADITION OF FINE BRASS

Slide Bar for Adjustable Height Personal Hand Shower Installation



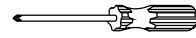
Parts:

Mounting
Hardware



2 Pcs

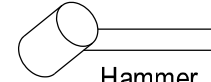
Need Tools:



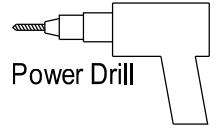
Phillips Screwdriver



Marking Pencil



Hammer



Power Drill

Legal Disclaimer :

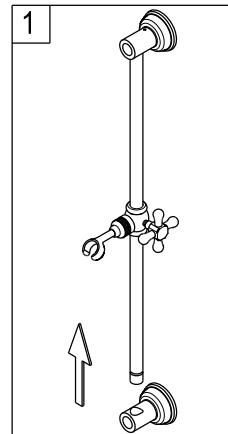
This bar is not to be used as a grab bar and it is not intended to support weight.

Before you begin

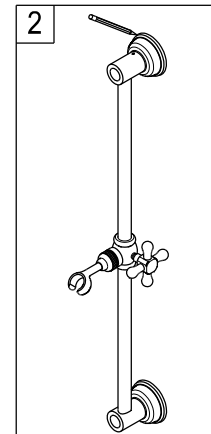
Identify the appropriate area to install this slide bar, proper location should be above 48" from the floor (as per ASTM F446).

It is recommended that slide bar be mounted directly to the structural framing of your home, if needed, cross bracing can be installed to provide adequate support.

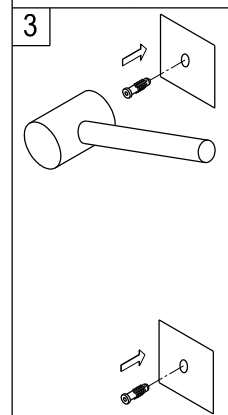
Installation:



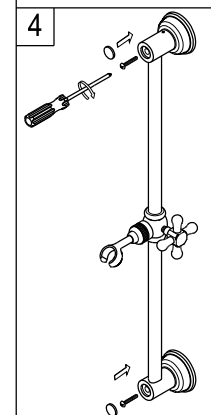
1. Assemble slide bar and position at the desired location.



2. Mark the position of the mounting screw by inserting a pencil through the center of the end post.



3. Remove slide bar and drill a small hole, insert plastic anchor until it is flush with the surface of the wall.



4. Attach slide bar to wall and fasten by threading screw into plastic anchor or wood stud, press cover button into place.

www.kingstonbrass.com

TOLL-FREE CUSTOMER SERVICE: 1-877-2-KBRASS

TECHNICAL SUPPORT E-mail: service@kingstonbrass.com

12775 Reservoir Street, Chino, CA91710