



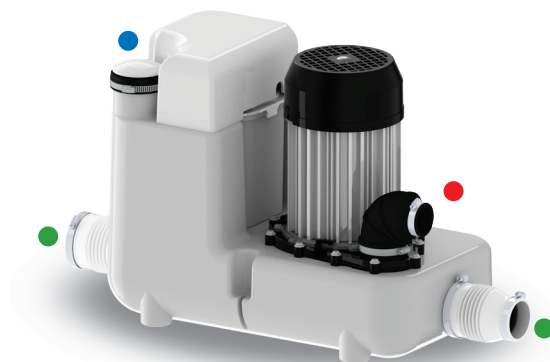
The **Sanicom 1 drain pump** is used to pump gray water away from a variety of fixtures in **commercial and residential applications**. The system is able to discharge the waste up to **25 feet vertical and/or 250 feet horizontal**. This model was designed to sustain the toughest applications from commercial applications where hot water can be an issue as it is **capable of handling up to 194°F**.

- **Discharges the waste through a 1" rigid pipe.** The system includes a rubber discharge elbow that adapts to the discharge pipe as well as a **non-return valve**. This elbow can be rotated 360 degrees depending on the discharge installation.
- Has been designed with a **1¼" vent connection** on top of the system. All plumbing codes require connection to a vent system. Please note that the vent system should be a two-way air vent as air needs to freely flow both ways. Note: The use of mechanical vents, air admittance valves or similar devices is not permitted.
- Discharges **gray water from commercial kitchens, dishwashers, washing machines, etc.** The gray water will drain into the system **via two 2" inlets** which are on either side of the housing. Note that when draining waste water into the pump through either of the side inlets, an external check valve (not supplied) has to be installed.

**CommercialGrade**

## TECHNICAL SPECIFICATIONS

Pump type: Drain pump  
 Electrical: 120 V - 60 Hz / 10 Amps (Max)  
 Motor: 1 HP oil-filled thermally protected motor  
 Capacitor rating: 45 microfarad  
 Operating Temperature: 194°F Max.  
 Power cord length: 50 inches  
 Noise level: ≤ 68 dBA (Lp) (measured at 3 ft.)





Discharge pipe diameter: 1"

Discharge rate at 25 ft: 17 GPM

Discharge rate at 3 ft: 33 GPM

Shut-off head: 53 ft.

Normal running time: 4-6 secs (short bursts)

Capacity: 2.75 gallons

Inlets: 2" (side inlets), 1 1/4" (top)

Method of activation: Pressure switch / circuit board

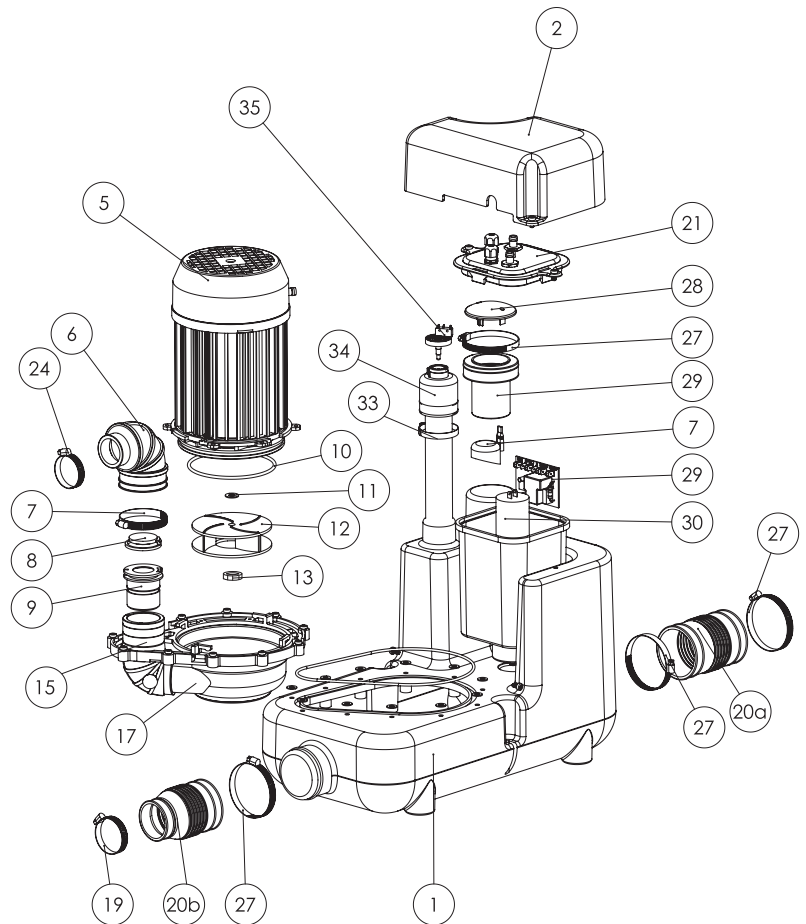
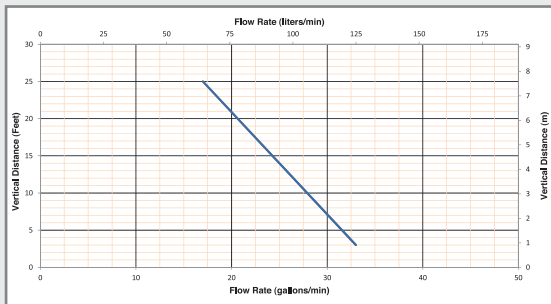
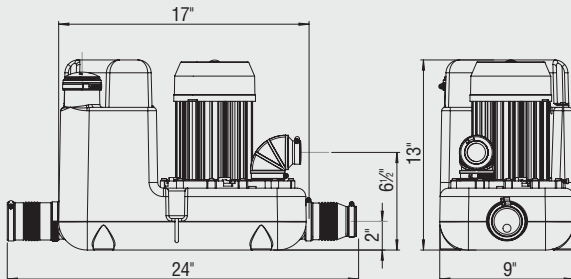
Shower/bathtub base height: 10" min.

Weight: 22 lbs.

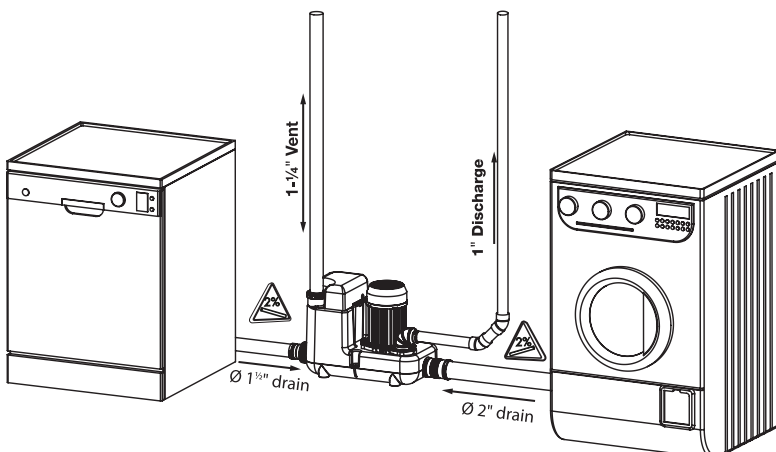
Certifying agencies: CSA (IPC, NSPC)

Recommended accessories: Descaler

Connections: Commercial sink, dishwasher, washing machine, etc



PLEASE CALL US TOLL-FREE AT 800-571-8191 (US) / 800-363-5874 (CDN) TO PURCHASE PARTS REFERENCED ABOVE



## AN EASY SOLUTION FOR COMMERCIAL APPLICATIONS REQUIRING GRAY WATER REMOVAL

Powerful 1 HP drain pump meant for commercial applications where hot water can be issue as it is capable of handling up to 194°F.

System is capable of **handling multiple fixtures simultaneously**. Powerful motor for absolute reliability and efficiency.

FOR ADDITIONAL TECHNICAL QUESTIONS, PLEASE CALL 800-571-8191