

463BRW

Before beginning, read the instructions below and follow all local plumbing and building codes.

For this installation of your new wall mounted faucet it is presumed that the water supply lines are underneath the floor and are in direct access for faucet installation.

A rounded hole, 1-1/2" in diameter, will provide access to the water supply lines when mounting the faucet. The distance between the mounting location to the water supply lines should be approximately 7".

SHUT OFF ALL WATER SUPPLY LINES AT THE TUB WHEN INSTALLING NEW FAUCET
Unpack and inspect your new faucet for any shipping damages and ensure no pieces are missing.

If any damages are discovered DO NOT INSTALL.

If any damages are discovered DO NOT INSTALL and contact customer support at 877-795-5684.

You may also call our customer service for any other assistance with our products

TOOLS AND MATERIALS NEEDED :

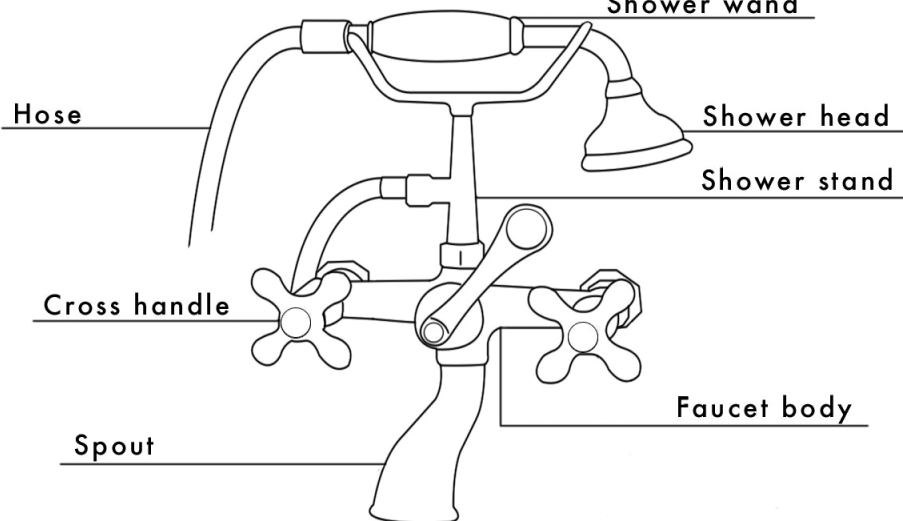
Screwdriver	Plumber's Tape	Adjustable wrench
-------------	----------------	-------------------

Plumbers Tape

Includes Wall Mounting Kit

Threaded nipple (2) Silver Metal Washer (2) Washer Nut (2)
Gold Washer (2) Rubber Cone Washer (2) Nut (2)

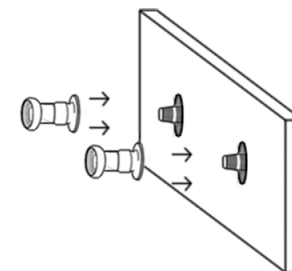
Shower wand



It is always advised to place plumber's tape on all threaded areas.

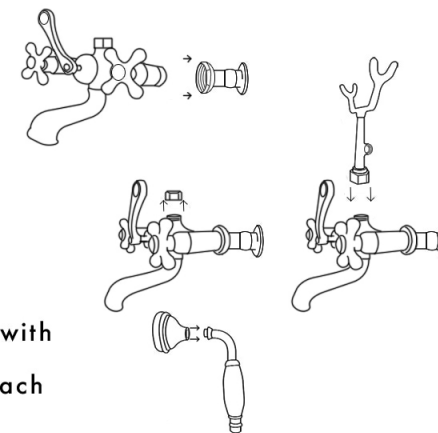
1. Assuming your water lines are prepared.
Locate a threaded nipple from the wall mounting kit.

2. Thread the straight end of the nipple into the waterline. Taking one of your wall shanks, thread it onto the opposite end of the nipple and tighten to secure.



REPEAT STEPS 1 - 2 FOR THE REMAINING NIPPLE AND WALL SHANK

3. Taking only the body of the faucet, attach the body to both risers. Tighten the wall shanks and faucet together.



4. Remove the nut behind the spout to show a cone rubber washer. Thread the stand onto the faucet body with the rubber cone washer remaining in the faucet.

5. Attach the short end of the hose to the stand with the black washer that is tied to the hose. Now attach the opposite end to the shower wand. Attach the shower head to the wand as well.

6. Finish by testing your new faucet for leaks and that the HOT / COLD water all work properly. Run water for atleast 60 seconds through the faucet to ensure proper installation.

