

KP1TS15S-1

15 Inch Drop-In / Top Mount Single Bowl
Stainless Steel Kitchen Sink

Kräus
SPECIFICATION SHEET

Sink Dimensions

Overall Dimensions: 15" x 20"

Bowl Dimensions: 13" x 16"

Sink Depth: 9"

Features

- 16 Gauge Stainless Steel Construction
- Top Mount Installation
- Single Bowl Sink
- Required Minimum Cabinet Size: 18" Left to Right, 22" Front to Back
- Rear Center-Set Drain
- 3 1/2" Drain Opening
- NoiseDefend Undercoating and Sound Dampening Pads

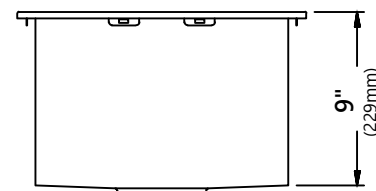
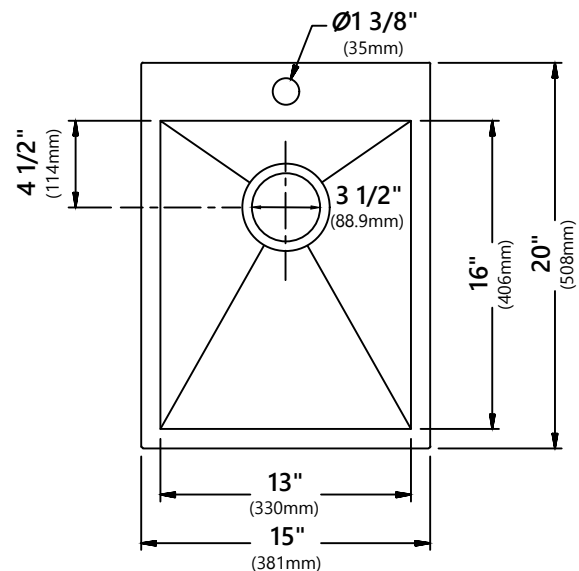
Accessories Included

- Strainer ST-1
- Cover Cap STC-2
- Bottom Grid KBG-P1316
- Cut-Out Template
- Silicone Mitt KSM-1BLACK
- Silicone Trivet KST-1BLACK
- Mounting Hardware
- Towel

CODES/STANDARDS:

Product Certification

cUPC (ASME A112.19.3/CSA B45.4)



Warranty

Kraus Limited Lifetime Warranty

see website for details www.kraususa.com

KBG-P1316

Stainless Steel Kitchen Sink Bottom Grid

Grid Dimensions

Overall Dimensions: 12 5/8" x 15 5/8" x 7/8"

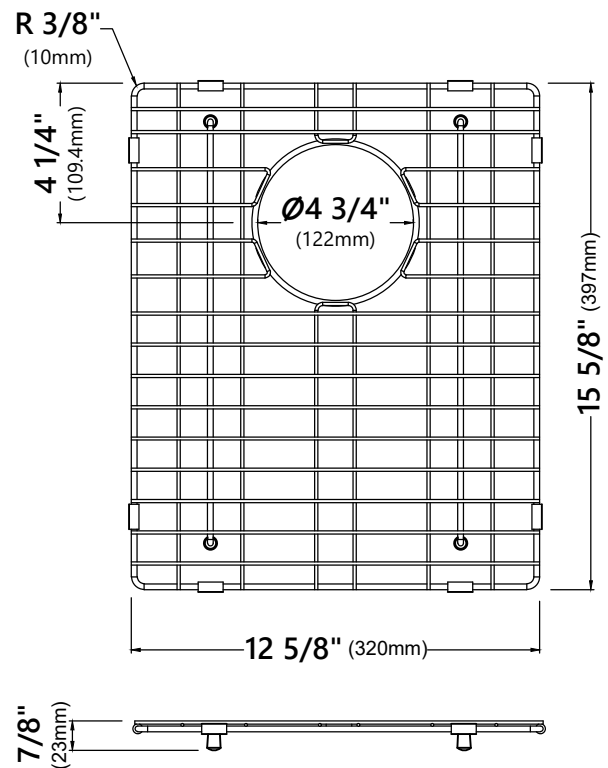
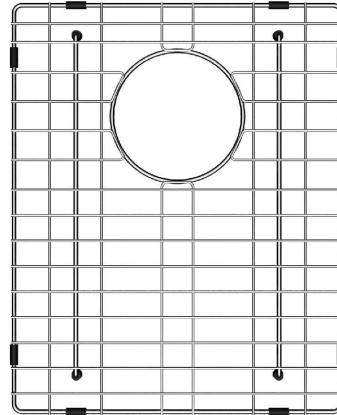
Features

- Commercial grade stainless steel construction
- For Use with the KP1TS15S-1 kitchen sink
- Protects bottom of sink from daily wear and tear
- Rubber feet provide additional protection

Warranty

Kraus One Year Limited Warranty

see website for details www.kraususa.com



ST-1

Stainless Steel Kitchen Sink Strainer

Strainer Dimensions

Overall Dimensions: $\varnothing 1\frac{1}{2}" \times 3\frac{3}{4}"$

Features

- Premium Stainless Steel construction
- Fits Standard $3\frac{1}{2}"$ or $4"$ Drain Opening
- Open/Close Stopper Prevents Debris from Clogging Drain Pipe

Available Finishes

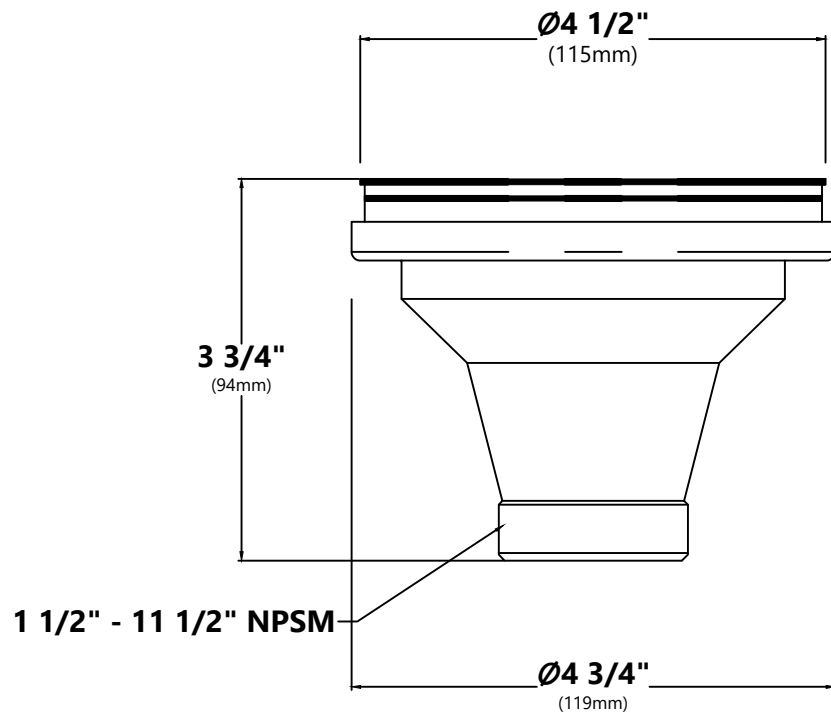
- Stainless Steel



Warranty

Kraus Limited Lifetime Warranty

see website for details www.kraususa.com



STC-2

Removable Decorative Drain Cover

Drain Cap Dimensions

Overall Dimensions: Ø4 1/2" x 5/8"

Features

- Premium Stainless Steel Construction
- Fits Standard 3 1/2" Drain Opening
- Allows Water to Drain Easily When Installed
- Conceals Garbage Disposal and Waste Fittings for a Seamless Look
- Compatible with Standart Pro™, Pax™, Kore™, Outlast Microshield™ and Premier™ Kitchen sinks

Available Finishes

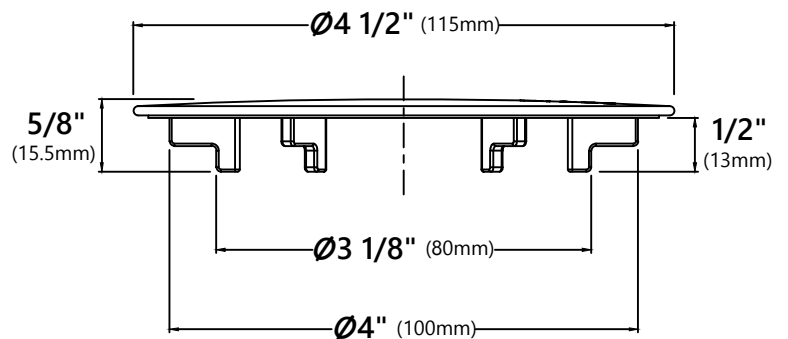
- Stainless Steel
- PVD Gunmetal



Warranty

Kraus Limited Lifetime Warranty

see website for details www.kraususa.com



KSM-1BLACK

Silicone Non-Slip Oven Mitt

Oven Mitt Dimensions

Overall Dimensions: 12" x 5 3/8"

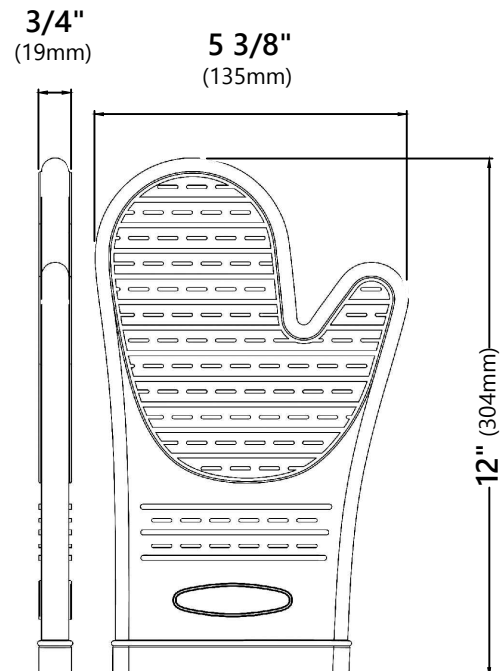
Features

- BPA-free Silicone
- Textured Non-Slip Surface for a Strong Grip
- Heat-Resistant up to 446° F
- Waterproof Material is Not Affected by Steam or Hot Liquids

Warranty

Kraus Limited Lifetime Warranty

see website for details www.kraususa.com



KST-1BLACK

Silicone Non-Slip Trivet

Trivet Dimensions

Overall Dimensions: Ø7 1/8" x 1/8"

Features

- BPA-free Silicone
- Textured Non-Slip Surface for a Strong Grip
- Heat-Resistant up to 446° F
- Waterproof Material is Not Affected by Steam or Hot Liquids

Warranty

Kraus Limited Lifetime Warranty

see website for details www.kraususa.com

