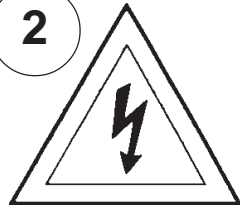


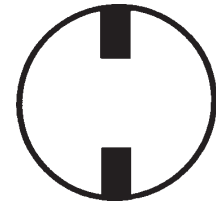
## Instructions for electrician STEPS 2 - 21

### WARNING:

2

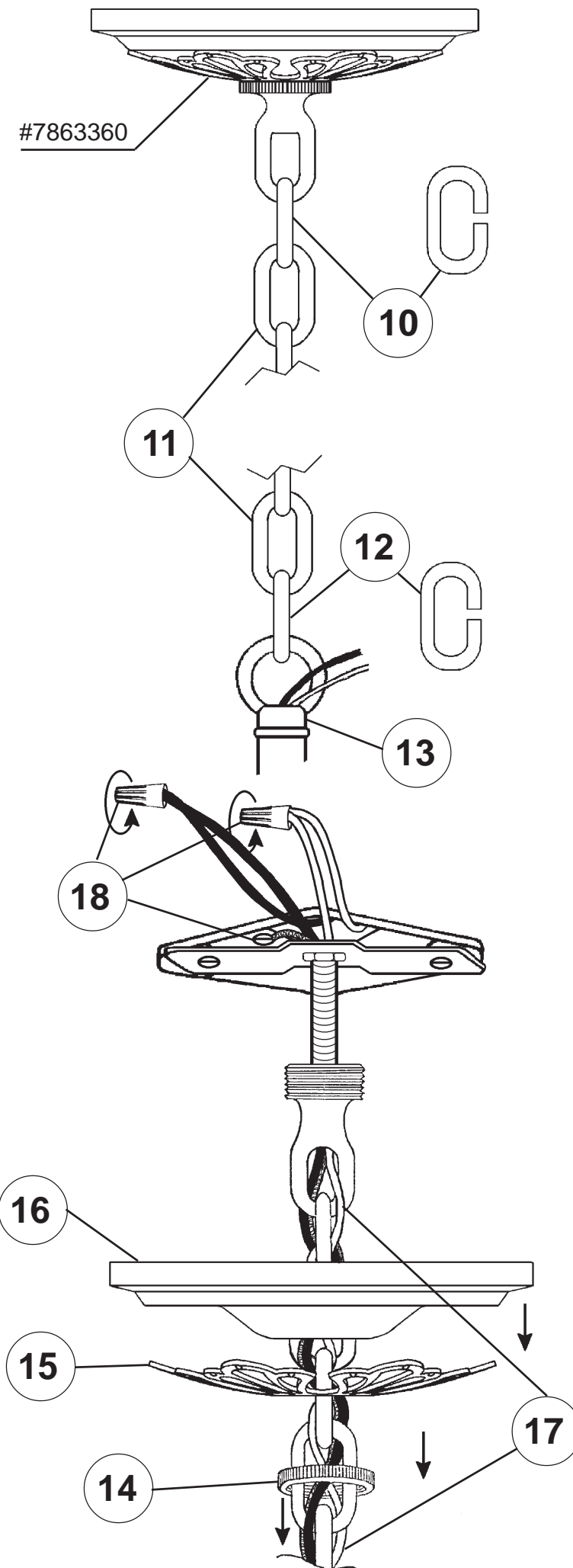
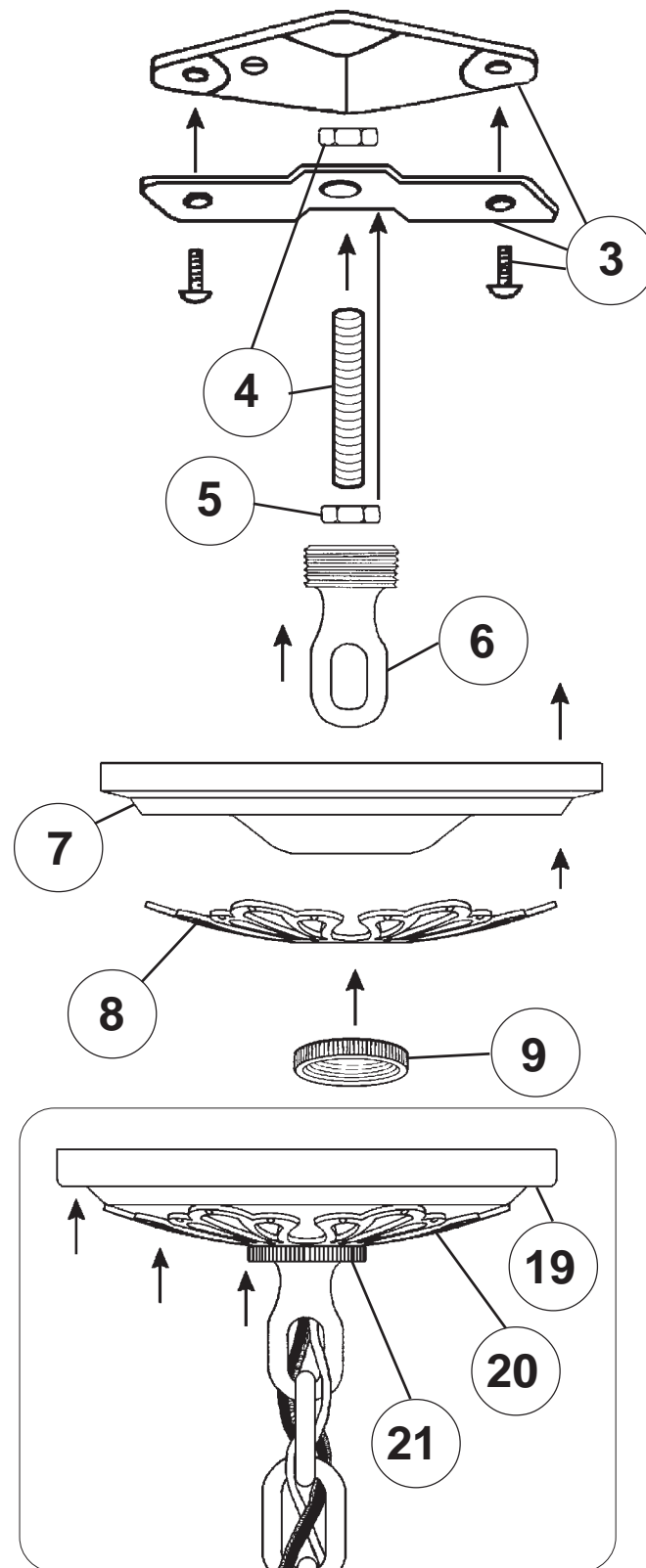


Electrical Danger

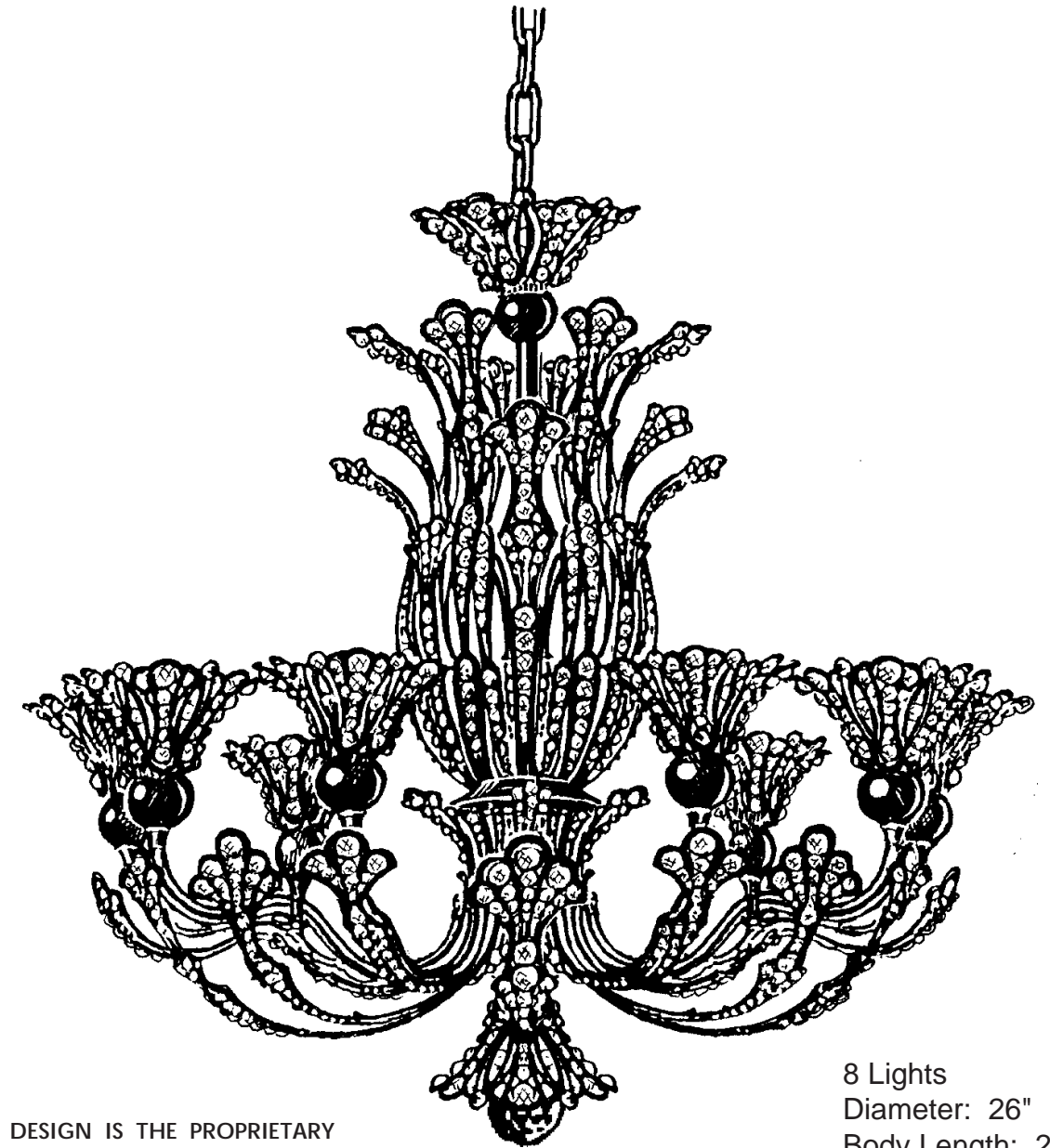


Turn Power Off

All electrical components must be installed by a licensed electrician in accordance with the National Electric Code and the appropriate local electrical codes.



## CHANDELIER 7863-\_\_\_\_ A TRIM DIAGRAM (Finish Option)



THIS DESIGN IS THE PROPRIETARY  
TRADE DRESS/TRADEMARK OF  
SCHONBEK WORLDWIDE LIGHTING INC.

8 Lights  
Diameter: 26"  
Body Length: 23"  
Hanging Weight: 14-1/2 lbs.

# SCHONBEK®

See diagram on back page  
Follow steps in exact order  
Save this trim diagram for future reference

1

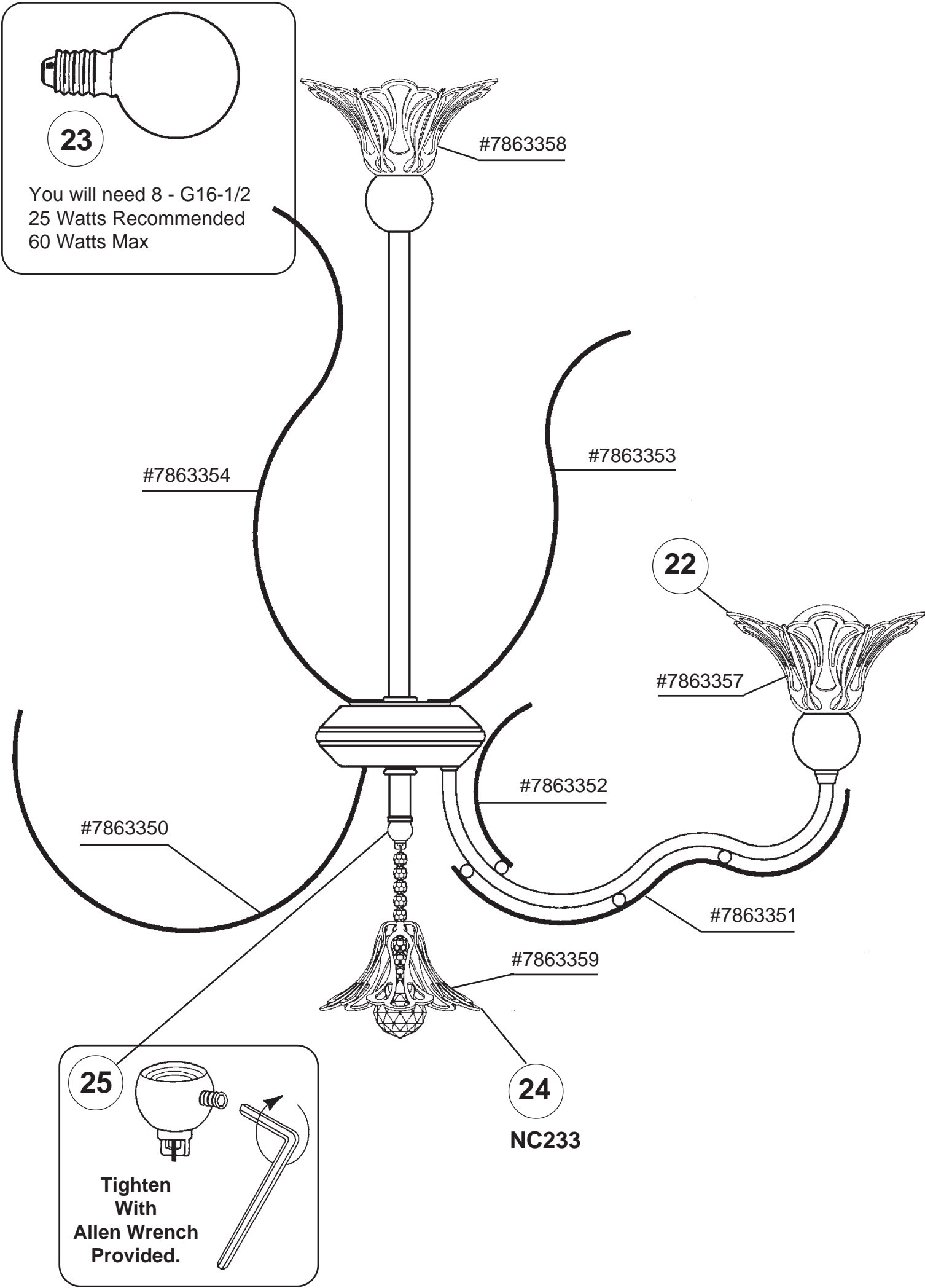
### IMPORTANT

Person who opens carton should record the following information for future service.

CODE # \_\_\_\_\_ Four-digit number on outside of carton.  
PACKER # \_\_\_\_\_ See crystal package label.  
ORDER # \_\_\_\_\_ See crystal package label.

SCHONBEK IS A WORLD LEADER IN CHANDELIER DESIGN. PATENTS INCLUDE:  
#D389,264, #D397,494, #D397,495 & #D435,686

Instructions for crystal trimming  
STEPS 22 - 25



PART NUMBERS FOR  
SPARE PARTS

