



## INTU Range of Recessed Electric Fireplaces



**INTU**

**INTU** your home. **INTO** your memories.



**TABLE  
OF CONTENT**

range overview	6 - 7
fireplace sizes	10 - 11
flame colors	12 - 13
frame colors	14 - 15
media options	16 - 17
product dimensions	18



built-in

four size options

three finish options

three standard led flame colors

five flame intensity levels

three decorative media options

remote control / control panel operation

no, low, high heat settings

timer from .5 - 7.5 hours

3-year manufacturer warranty

# intu

A RANGE OF BUILD-IN ELECTRIC FIREPLACES

For those in search of sleekness, the Ignis® INTU Series of recessed electric fireplaces offers a flush mounted solution for both ambiance & supplemental warmth. A range of CE Certified electric fireplace inserts, the INTU range has several ways to incorporate the look for myriad design & color schemes. This collection allows for the look & feel of a real fire (or one that's colorful) and doesn't take up valuable floor space.

Employing the most advanced technology in LED lighting, Ignis® Recessed Electric Wall Fireplaces offer a realistic simulation of brightly colored orange, blue, or multi-colored flames. The fireplace's intensity may be set to one of the five-level options for optimal visual appeal as the mood dictates. A low bristling flicker at its lowest, a full thriving show of fire at the highest allows for this recessed electric fireplace to be the backdrop of life's moments - from those of introspecting to romance to festive.

The genuine appearing flames are snuggled behind a slanted glass fascia. The angled glass allows for the accommodation of the fireplace's heating vent - without the eyesore of it. The frame is offered in both black and stainless steel – each a strikingly handsome finish. Continuing the personalization choices, each of the four models may be requested with one of three media packages: natural logs, white pebbles, or clear crystals. Each choice allows the flames a bed from which to rise and are complemented by the flame and glass color of choice.

Convenient as they are aesthetically pleasing, the electric fireplaces of the Ignis® Intu range may be remotely

controlled with the included remote control device. Power, heat output, the hue of the flame and flame intensity may be accomplished from a distance. Additionally, this series of electric fireplaces offer a timed experience, should you care to enable it. You may choose to extinguish the fireplace within segments of thirty minutes to seven and a half hours, which may also be accomplished remotely.

INTU Recessed Electric Wall Fireplaces offer three heating settings: High, Low, and Off. Therefore, you can add the amount of heat that is perfect for your space at the push of a button. If, however, you'd just like to enjoy the visual experience of the fireplace, the heater may be turned off completely exclusive of the flame display. When heat is enabled, it is forced through a vent located at the top in the front of the unit. The result is a minimalist & streamlined fireplace without visible ducts that may be enjoyed year-round extending the value of your investment.

When you select an electric fireplace from the Ignis® INTU Range, each model (available in four sizes - 36", 50", 60", and 72", each with two color and three media options) is protected by a built-in overheating protection device and a three-year manufacturer warranty.







36"



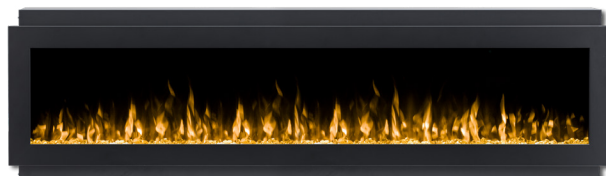
50"



60"



72"



## *The sizes*

### **36" - INTU36**

Overall Width: 36.00"  
Overall Height: 21.73"  
Overall Depth: 5.90"  
Firebox Width: 33.37"  
Firebox Depth: 5.35"  
Frame Height: 17.48"  
Viewing Height: 11.96"  
Viewing Width: 30.51"

### **50" - INTU50**

Overall Width: 50.00"  
Overall Height: 21.73"  
Overall Depth: 5.90"  
Firebox Width: 47.67"  
Firebox Depth: 5.35"  
Frame Height: 17.48"  
Viewing Height: 11.96"  
Viewing Width: 44.49"

### **60" - INTU60**

Overall Width: 60.00"  
Overall Height: 21.73"  
Overall Depth: 5.90"  
Firebox Width: 57.67"  
Firebox Depth: 5.35"  
Frame Height: 17.48"  
Viewing Height: 11.96"  
Viewing Width: 54.49"

### **72" - INTU72**

Overall Width: 72.00"  
Overall Height: 21.73"  
Overall Depth: 5.90"  
Firebox Width: 69.67"  
Firebox Depth: 5.35"  
Frame Height: 17.48"  
Viewing Height: 11.96"  
Viewing Width: 66.49"



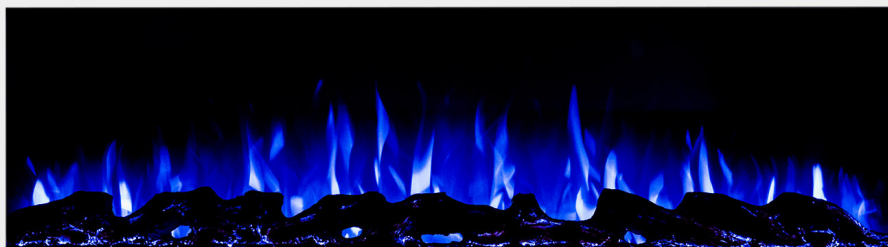


A standard feature with all INTU models, you may choose the color of the fireplace's flame presentation. Three colors - ***classic orange, icy blue, or mod multicolored***, enable you match the hue of the fireplace with that of the moment.



# *The flame color*

with five intensity levels



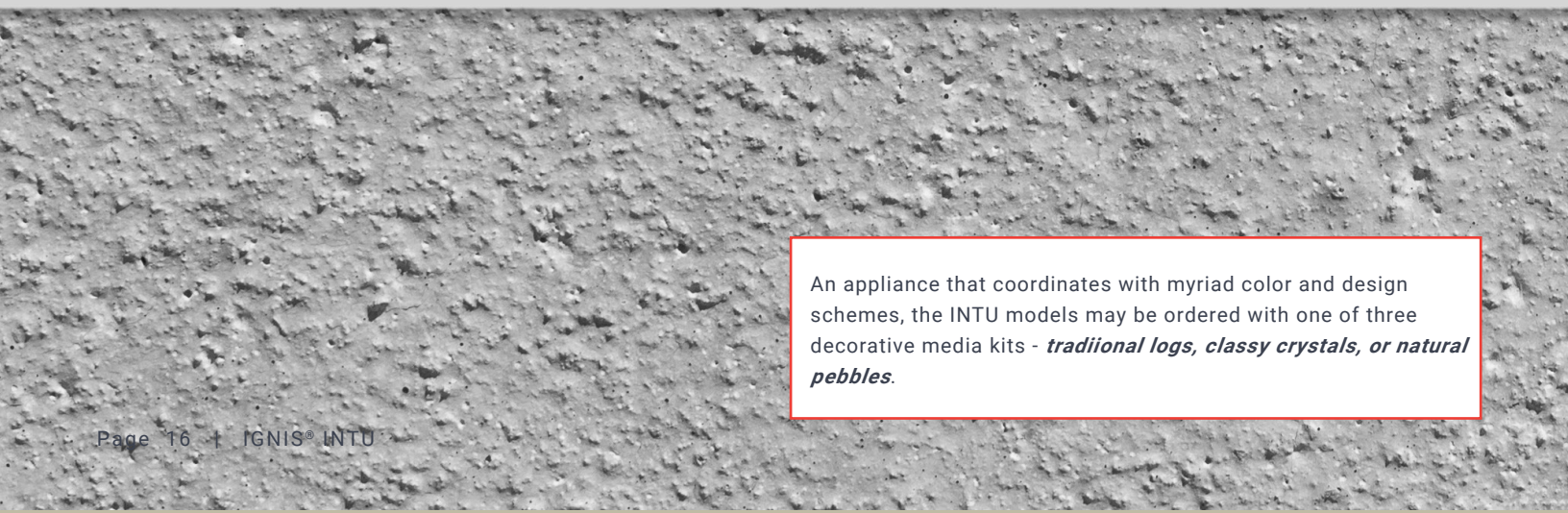
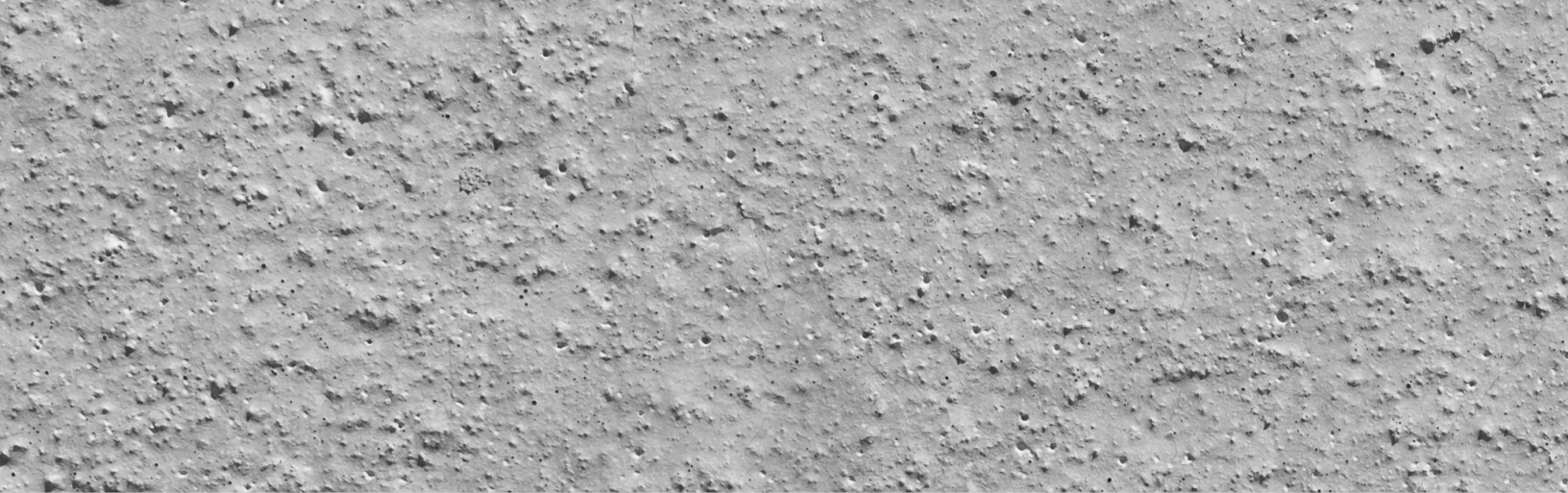
## The frame color

The IGNIS® INTU Range of recessed electric fireplaces may be requested to include one of three frame options - ***black, stainless steel, or white.***





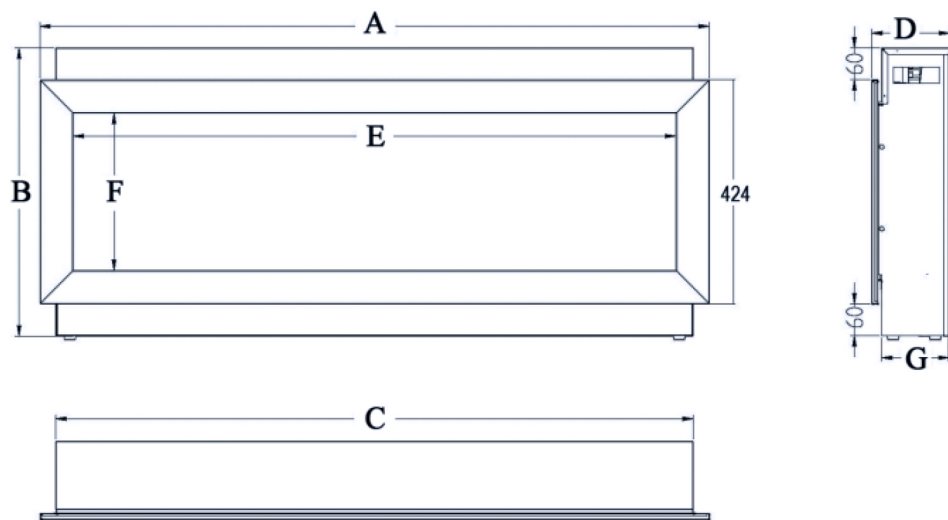




An appliance that coordinates with myriad color and design schemes, the INTU models may be ordered with one of three decorative media kits - ***traditional logs, classy crystals, or natural pebbles.***

# *The media*





## PRODUCT DIMENSIONS

Model Number	A	B	C	D	E	F	G
<b>INTU 36</b>	36" 915CM	21.46" 54.4CM	33.63" 855CM	5.86" 14.9CM	31" 788CM	11.69" 297CM	5.03" 128CM
<b>INTU 50</b>	50" 127CM	21.46" 54.4CM	47.63" 121CM	5.86" 14.9CM	45" 114.3CM	11.69" 297CM	5.03" 128CM
<b>INTU 60</b>	60" 152.4CM	21.46" 54.4CM	57.63" 146.4CM	5.86" 14.9CM	55" 139.7CM	11.69" 297CM	5.03" 128CM
<b>INTU 72</b>	72" 183CM	21.46" 54.4CM	69.6" 177CM	5.86" 14.9CM	67.04" 170.3CM	11.69" 297CM	5.03" 128CM



concealed control panel



angled front glass conceals heater vents



409 Joyce Kilmer Avenue, Suite 5B  
New Brunswick, New Jersey 08901  
United States of America  
855.MY.IGNIS  
[ignisproducts.com](http://ignisproducts.com)