





HOOKER[®]

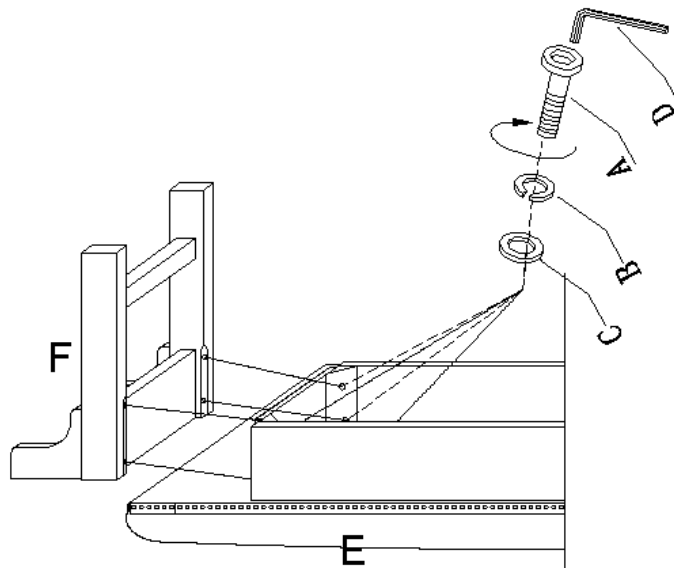
— FURNITURE —

ASSEMBLY INSTRUCTION

Item#: 5751-90019-95 Bed Bench

**** Please make sure you have all parts indicated below prior to assembly.**

NO	HARDWARE LIST		Q'TY
A		ALLEN BOLT	8
B		LOCK WASHER	8
C		FLAT WASHER	8
D		ALLEN WRENCH	1



Assembly Steps

Diagram 1

1. Put seat frame (E) upside down on a soft surface to prevent it from being scratched.
(See Diagram 1).
2. Attach leg frame(F) to seat frame (E) by using bolts (A), lock washers (B) and flat washers (C), tighten with allen wrench (D) in clockwise direction (See Diagram 1).
3. Assemble the other leg frame in the same way.
4. Turn bench upright.

Cleaning Instruction: Clean finished parts with a damp cloth using a mild dishwashing liquid and water solution. Polish the finish with soft cloth and an industry recognized furniture polish.