






ASSEMBLY INSTRUCTION ITEM NO: 28043/28053 NIGHTSTAND




Thank you for purchasing this quality product. Be sure to check all packing material carefully for small parts which may have come loose inside the carton during shipment. Separate, identify and count all parts and hardware. Compare with the parts list to be sure all parts are present.

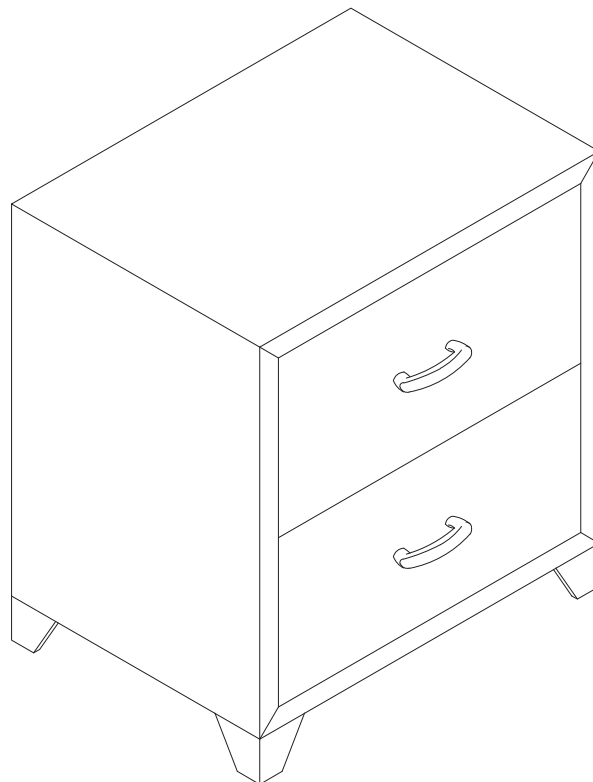
"DO NOT TIGHTEN SCREWS UNTIL COMPLETELY ASSEMBLED"

IMPORTANT:

PLEASE READ INSTRUCTION BEFORE STARTING THE ASSEMBLY

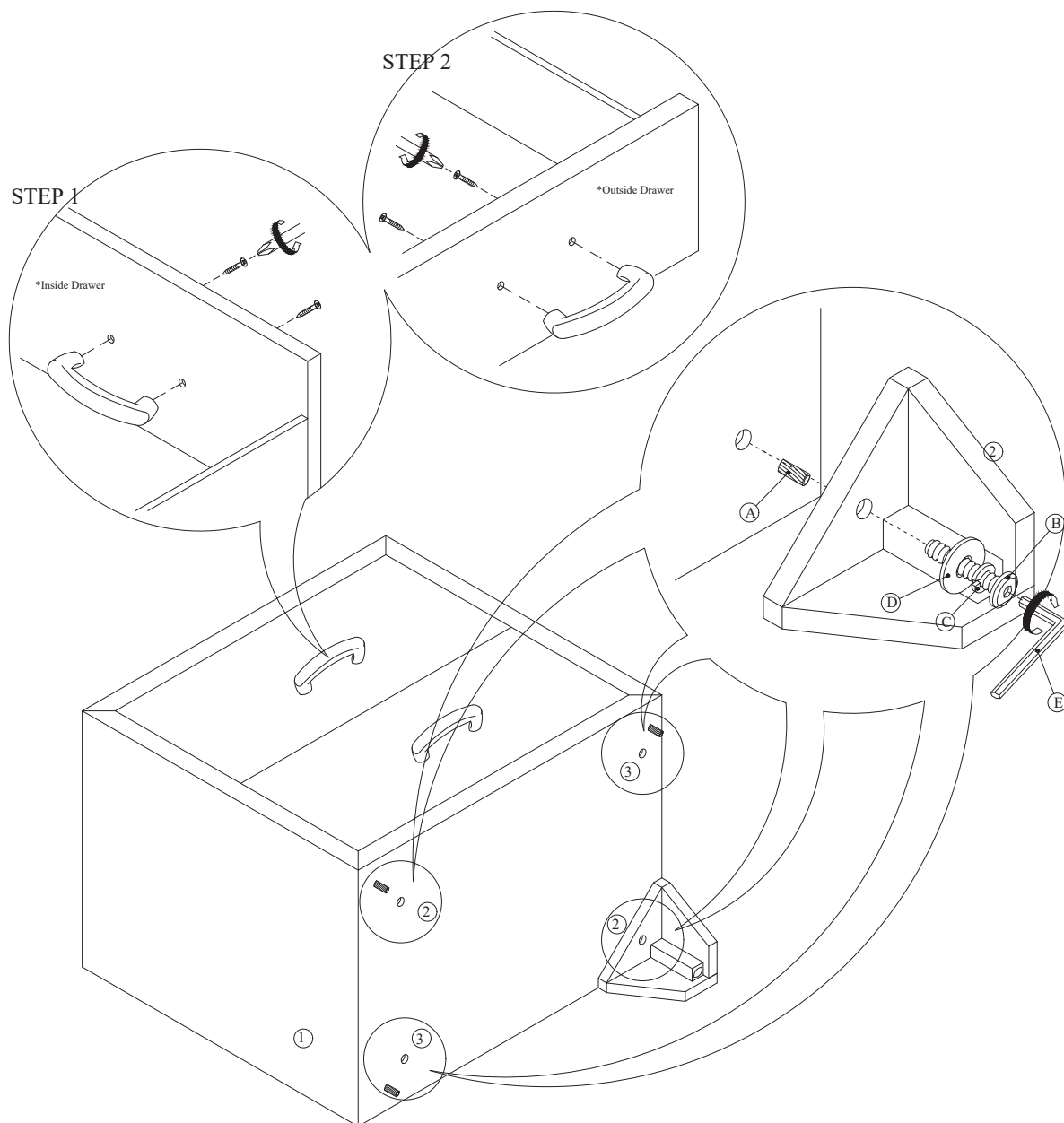
HARDWARE LIST				
ITEM	DESCRIPTON	DRAWING	SIZE	QTY
A	WOOD DOWEL		M8 X 30MM	4PCS
B	JCBC SCREW		M6 X 40MM	4PCS
C	SPRING WASHER		M6 X 13MM	4PCS
D	FLAT WASHER		M6 X 19MM	4PCS
E	L - KEY		M4 X 65MM	1PC

PART LIST			
ITEM	DESCRIPTON	DRAWING	QTY
1	NIGHTSTAND		1PC
2	LEG (2) (Located in the bottom drawer)		2PCS
3	LEG (3) (Located in the bottom drawer)		2PCS



ASSEMBLY INSTRUCTION

ITEM NO : 28043/28053 NIGHTSTAND



ASSEMBLY
COMPLETED