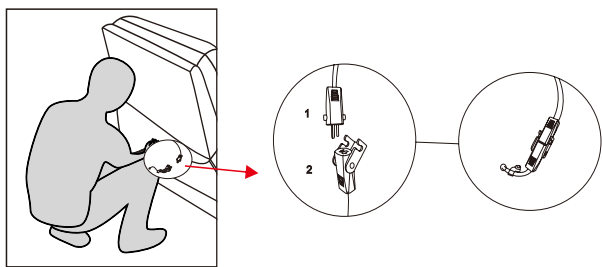
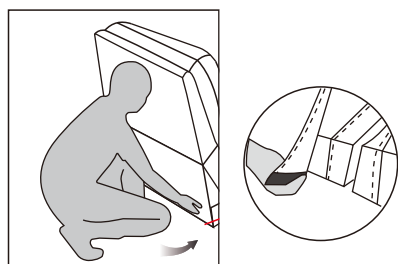


4.

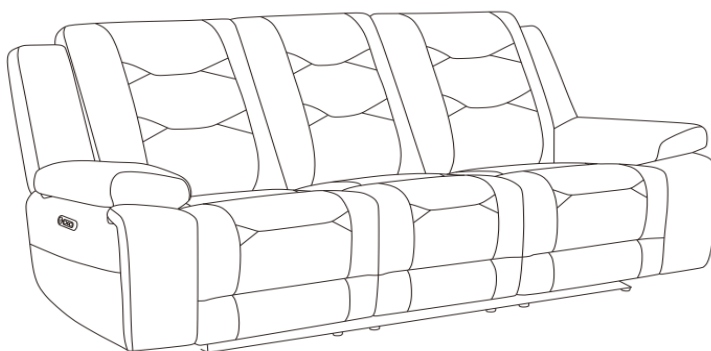


5.



Seat contains 2.2 Density Foam, Back Cusion contains 100% Fiber.

Power Sofa



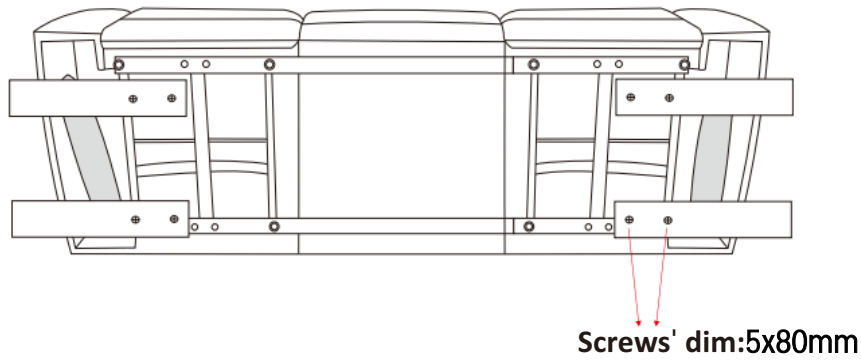
Part List

When unpacking, please be careful not to discard any parts with the packaging. Before continuing, please make sure you have the following parts:

No	Description	Sketch	Qty
A	Body		1 PC
B	LAF Back Cushion		1 PC
C	Middle Back Cushion		1 PC
D	RAF Back Cushion		1 PC
E	LAF Wing		1 PC
F	RAF Wing		1 PC

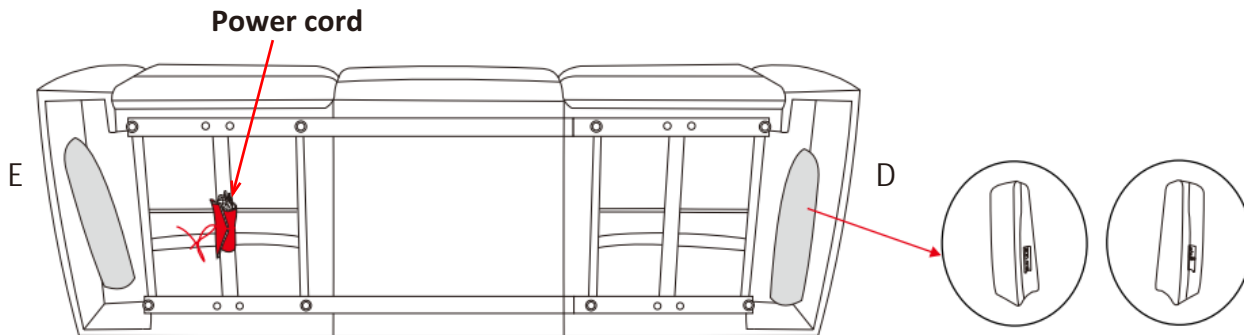
Step 1

Before removing the product from the carton, detach and remove the plywood from the frame using screw driver as shown in the diagram.



Step 2

There are two wings under seats. Remove LAF Wing(E) and RAF Wing(F) from under seat. Meanwhile, untie the power cord.



Step 3

1. Install the Backrest(B/C/D) into the Seat(A) by positioning the female metal receiver brackets over the male metal posts. Ensure that female metal receiver brackets on each side of the backrest are line up with the seat metal posts. Push down the female brackets over male posts simultaneously until each side is locked into place and an audible " click " is heard.
2. Install the LAF Wing(E) and RAF Wing(F) into by sliding wing in a downward motion along the side of the seat back to connect the brackets.
3. Connect the wire.
4. Attach the flap to the seat frame by pulling the flap down, and pressing the bottom hem under the seat base , connecting the velcro.

