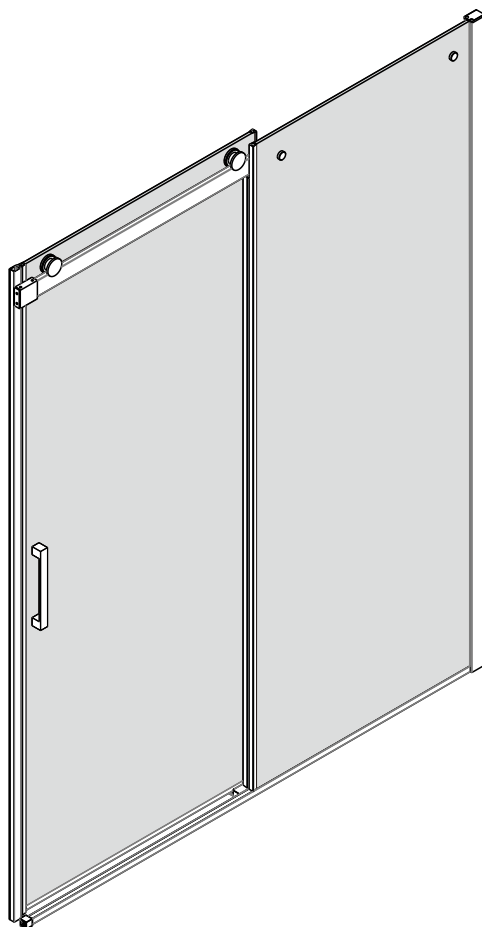


303048-SS-PC/303048-SS-BN/303048-SS-MB
303060-SS-PC/303060-SS-BN/303060-SS-MB



IMPORTANT-Please read and follow all warnings and instructions before using this product. Injury can result from improper use. Save this documents.



WARNING
Tempered Glass, please don't hit the corners and the surrounding, otherwise the glass will burst.



● General Information

Please inspect the product immediately upon receipt for transit damage, missing packs/parts or manufacturing fault. Damage reported later cannot be accepted. Please handle the product with care avoiding knocks and shock loading to all sides and edges of the glass.

Notes: Safety glass can not be re-worked.

Please read these instructions carefully before start of installation.

Special care should be taken when drilling walls to avoid hidden pipes or electrical cables.

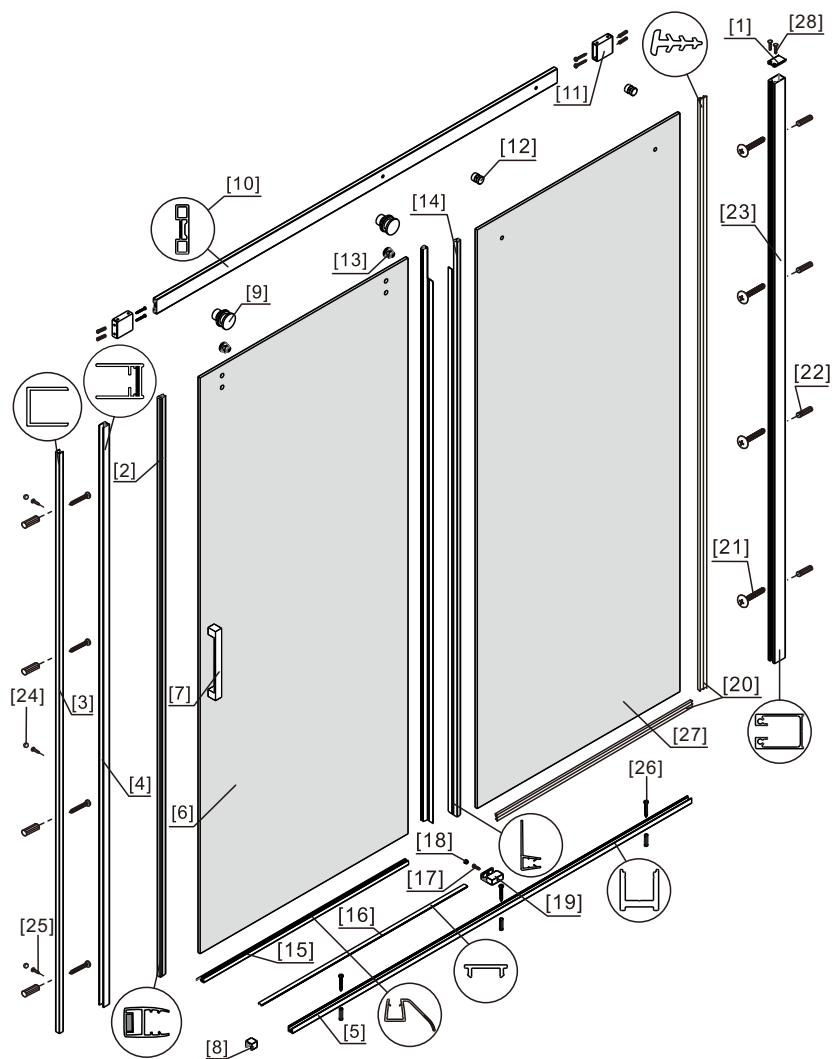
Note: This product is heavy and may require two people to install.

Aftercare instructions

After use, your shower should be cleaned with soap and water. This is particularly important in hard water districts where insoluble lime salts may be deposited and allowed to build up. Cleaners of a gritty or abrasive nature should not be used. Care should be taken to avoid contact with strong chemicals such as organic solvents and strippers.

Glass cleaners can be used but with caution, if in doubt contact the manufacturer of the cleaner in question.

Please keep these instructions for aftercare and customer service details.



- | | | |
|------------------------|---------------------------------|-------------------------|
| [1] 1xProfile Cover | [10] 1xTop Horizontal Rail | [19] 1xDoor Guider |
| [2] 1xMagnetic Seal | [11] 2xWall Connectors | [20] 2xSealings |
| [3] 1xWall Profile | [12] 2xFixing Parts | [21] 8xScrews ST4x35 |
| [4] 1xVertical Profile | [13] 2xAnti-collision Component | [22] 11xWall Plugs |
| [5] 1xU Channel | [14] 2xDoor Side Gaskets | [23] 1xWall Profile |
| [6] 1xDoor Panel | [15] 1xWater Deflector | [24] 3xScrew Cover Caps |
| [7] 1xHandle Set | [16] 1xU Channel Cover Profile | [25] 3xScrews ST4x8 |
| [8] 1xMetal Cover Cap | [17] 1xScrew ST4x12 | [26] 3xScrews ST4x25 |
| [9] 2xTop Rollers | [18] 1xScrew Cover Cap | [27] 1xFixed Panel |
| | | [28] 2xScrews ST4x16 |

● Box Contents:

1xInstallation Instruction.	➔	
[1] 1xProfile Cover. [28] 2xScrews ST4x16.	➔	
[2] 1xMagnetic Seal.	➔	
[3] 1xWall Profile. [4] 1xVertical Profile.	➔	
[5] 1xU Channel. [16] 1xU Channel Cover Profile.	➔	
[6] 1xDoor Panel.	➔	
[7] 1xHandle Set.	➔	
[8] 1xMetal Cover Cap.	➔	
[9] 2xTop Rollers.	➔	
[10] 1xTop Horizontal Rail.	➔	
[11] 2xWall Connectors.	➔	
[12] 2xFixing Parts.	➔	
[13] 2xAnti-collision Component.	➔	
[14] 2xDoor Side Gaskets.	➔	
[15] 1xWater Deflector.	➔	
[17] 1xScrew ST4x12. [18] 1xScrew Cover Cap. [19] 1xDoor Guider.	➔	
[20] 2xSealings.	➔	
[21] 8xScrews ST4x35.	➔	
[22] 11xWall Plugs.	➔	
[23] 1xWall Profile.	➔	
[24] 3xScrew Cover Caps. [25] 3xScrews ST4x8.	➔	
[26] 3xScrews ST4x25.	➔	
[27] 1xFixed Panel.	➔	
Wrenchs.	➔	

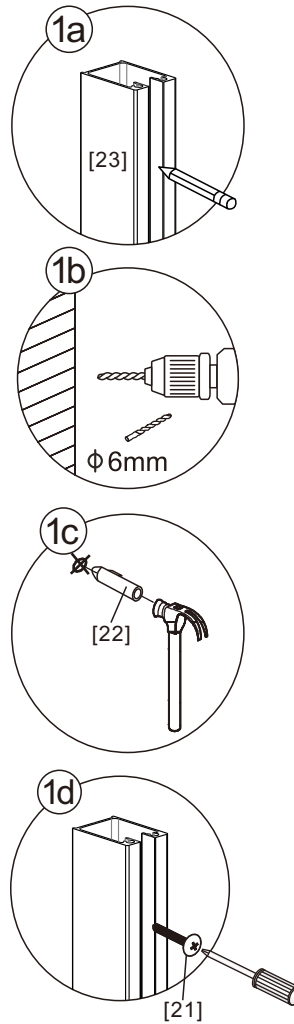
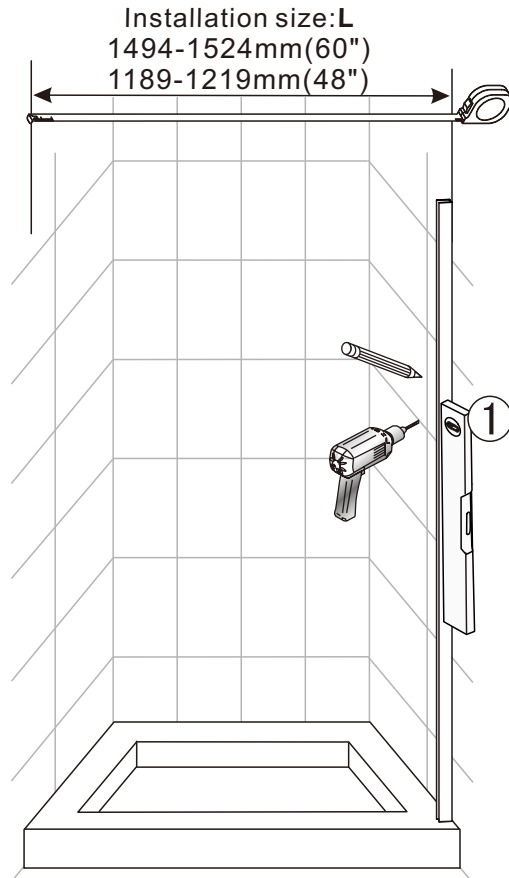


● Assembly

4

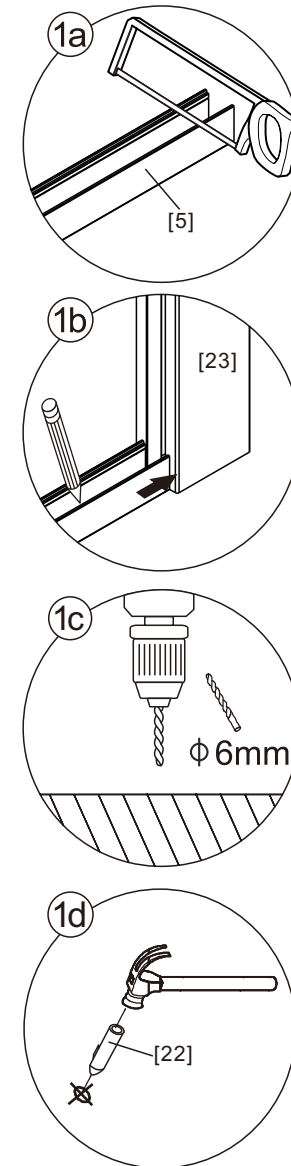
01

[22]		x4
[21]		x4(ST4x35)
[23]		x1



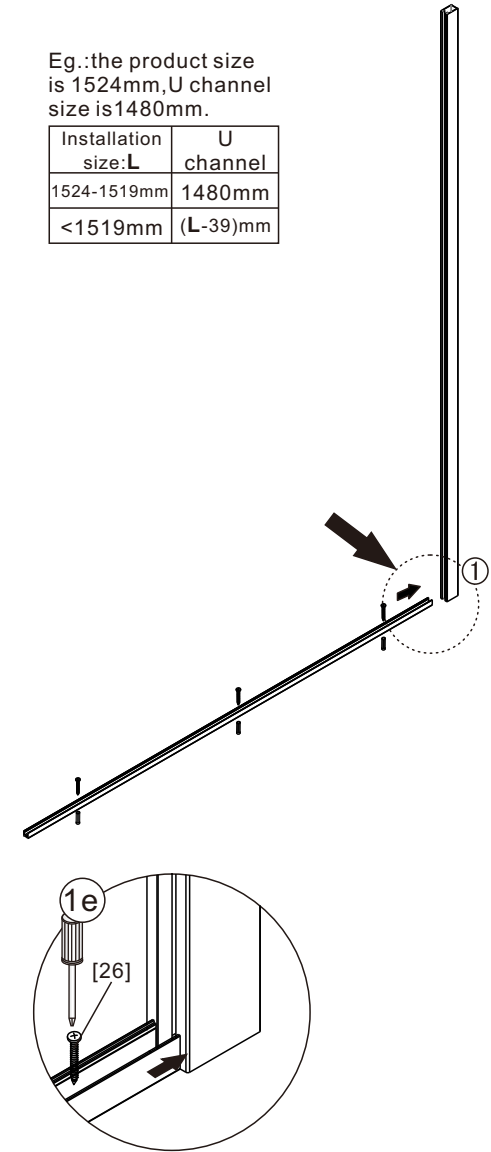
02

[5]		x1
[22]		x3
[26]		x3(ST4x25)

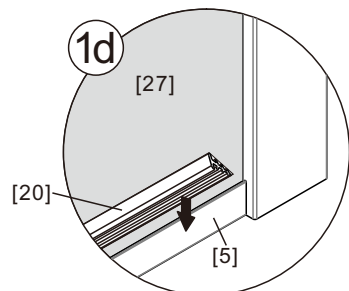
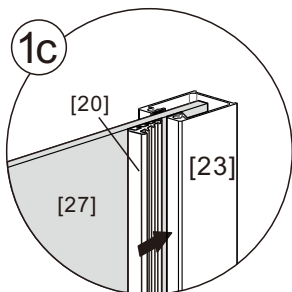
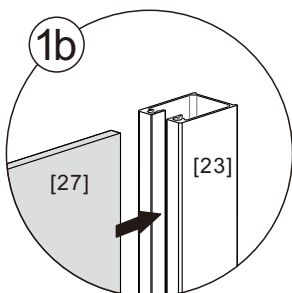
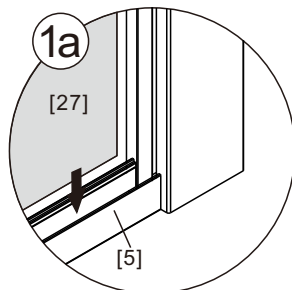
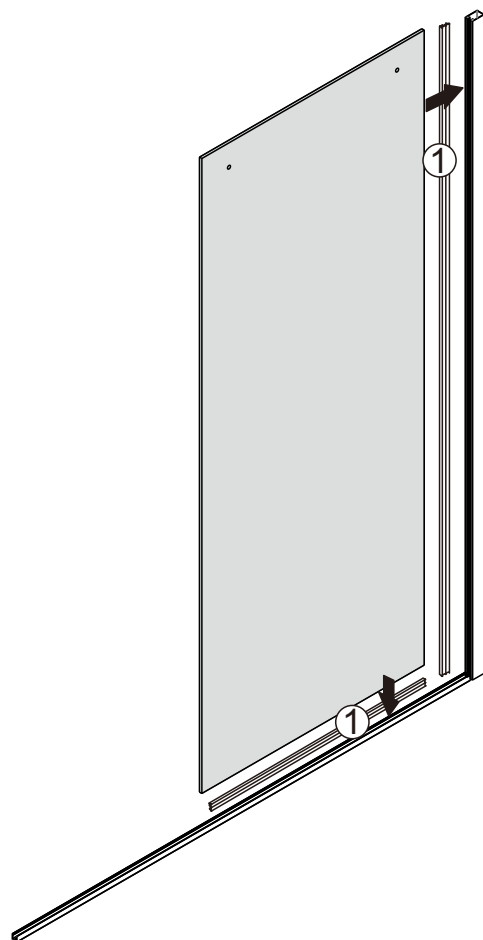
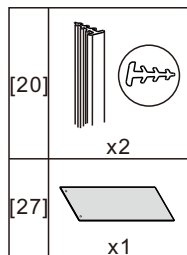


Eg.:the product size is 1524mm,U channel size is1480mm.

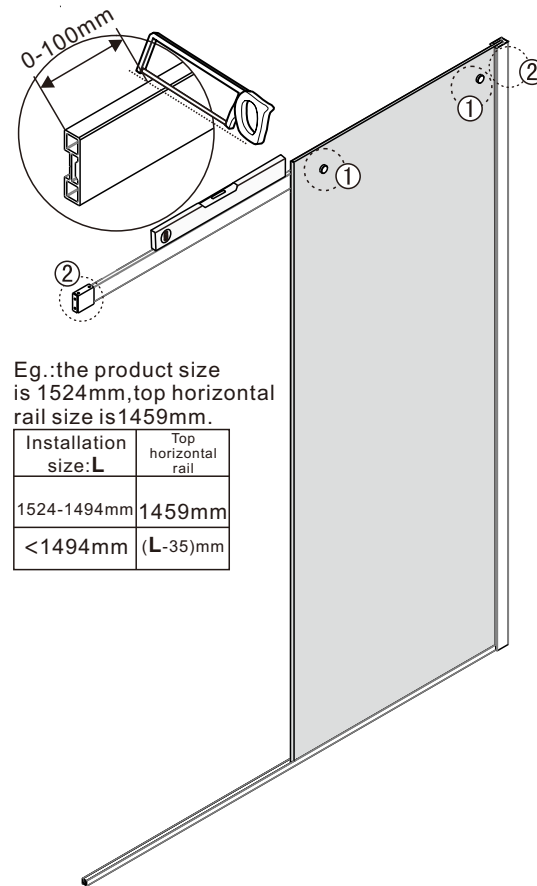
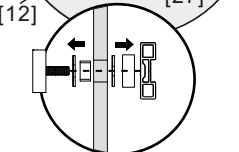
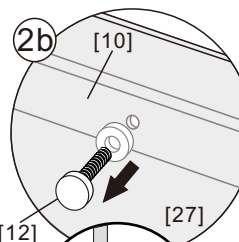
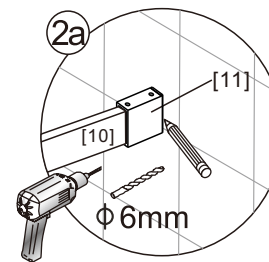
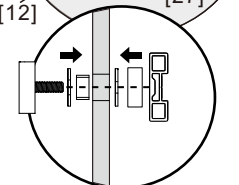
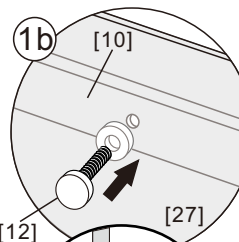
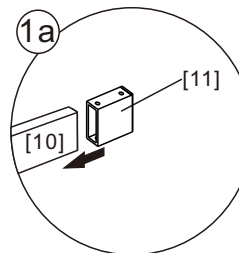
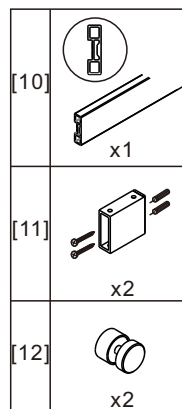
Installation size:L	U channel
1524-1519mm	1480mm
<1519mm	(L-39)mm



5

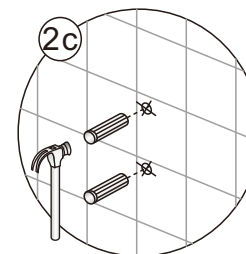


View from inside

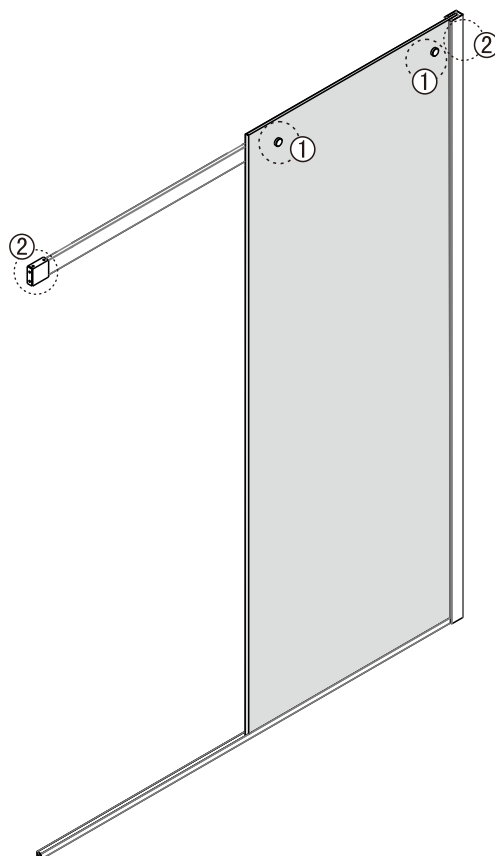
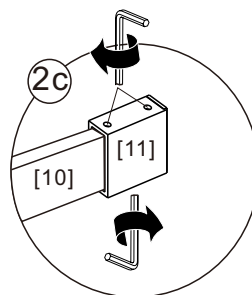
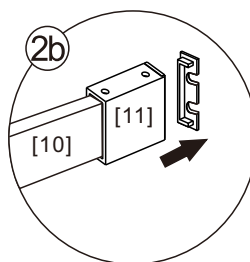
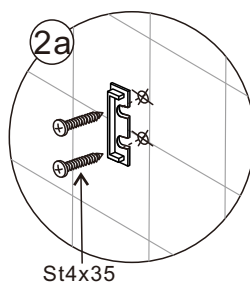
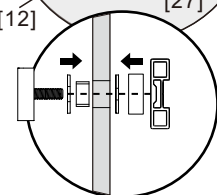
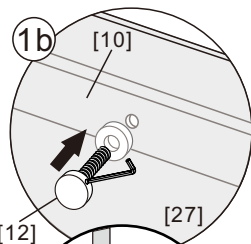
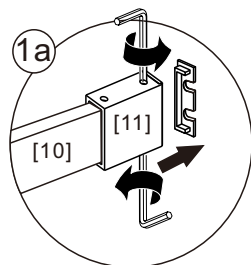


Eg.:the product size is 1524mm, top horizontal rail size is 1459mm.

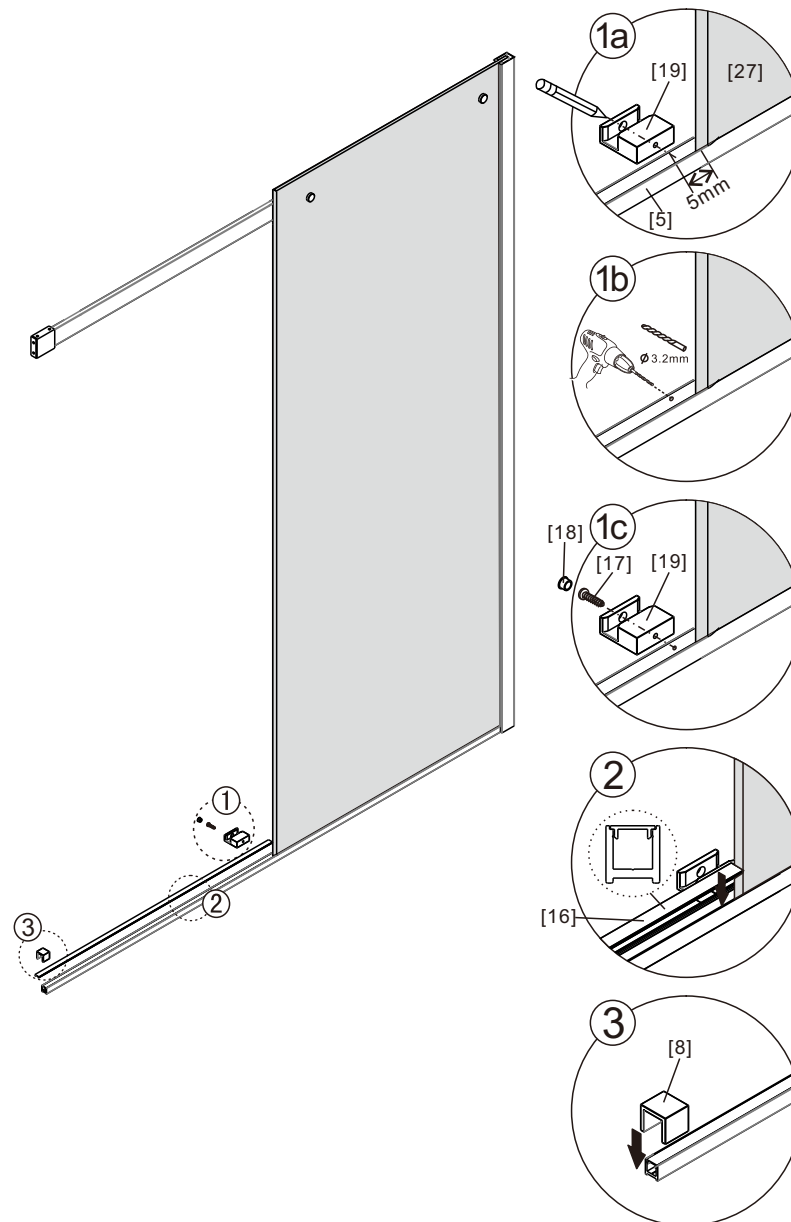
Installation size: L	Top horizontal rail
1524-1494mm	1459mm
<1494mm	(L-35)mm







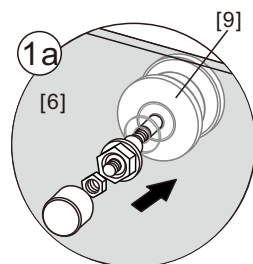
[10]		x1
[11]		x2
[12]		x2



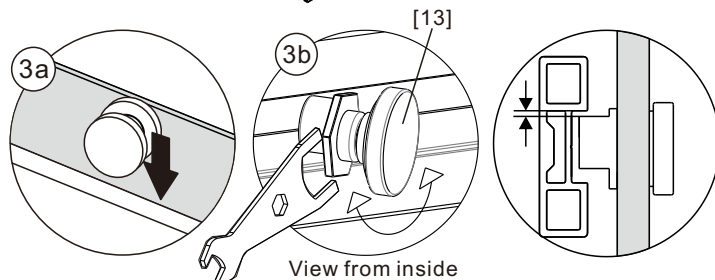
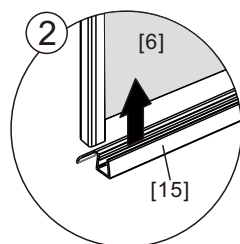
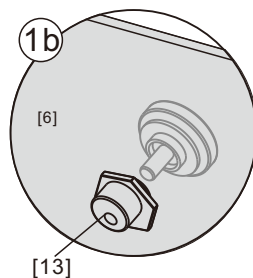
[8]		x1
[16]		x1
[17]		x1 (ST4x12)
[18]		x1
[19]		x1






[6]		x1
[9]		x2
[13]		x2
[15]		x1

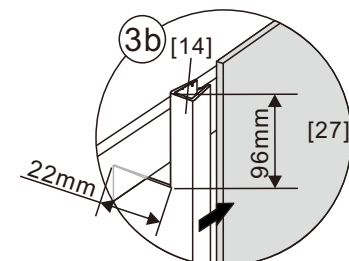
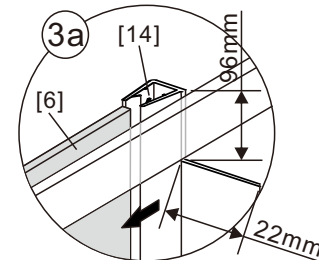
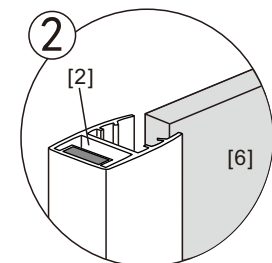
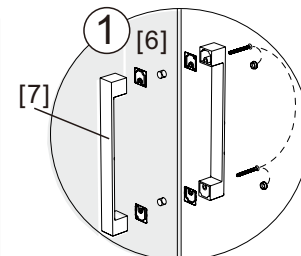
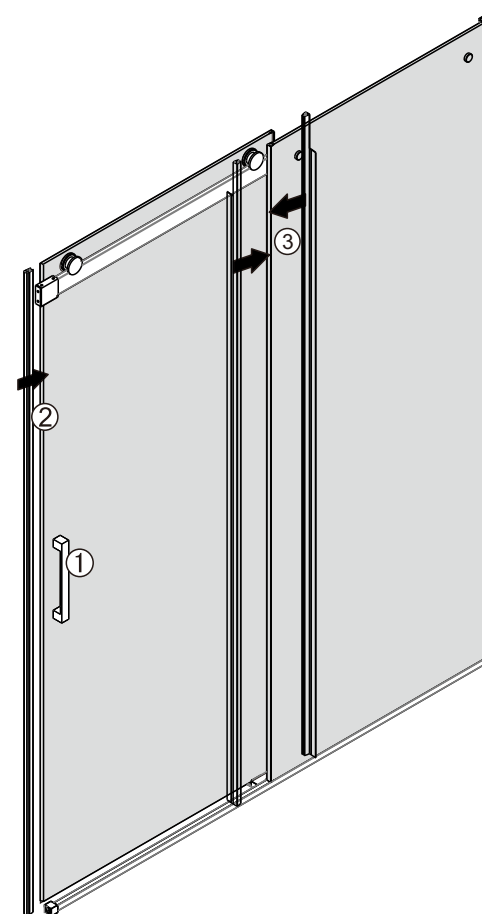


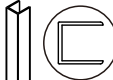



View from inside

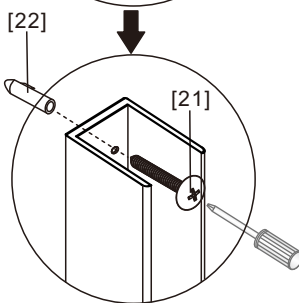
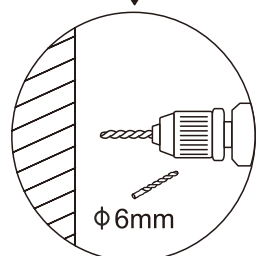
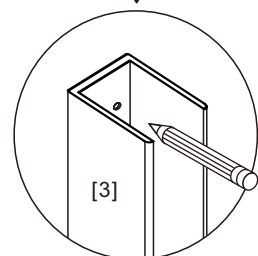
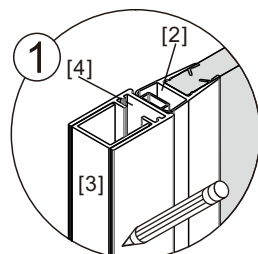
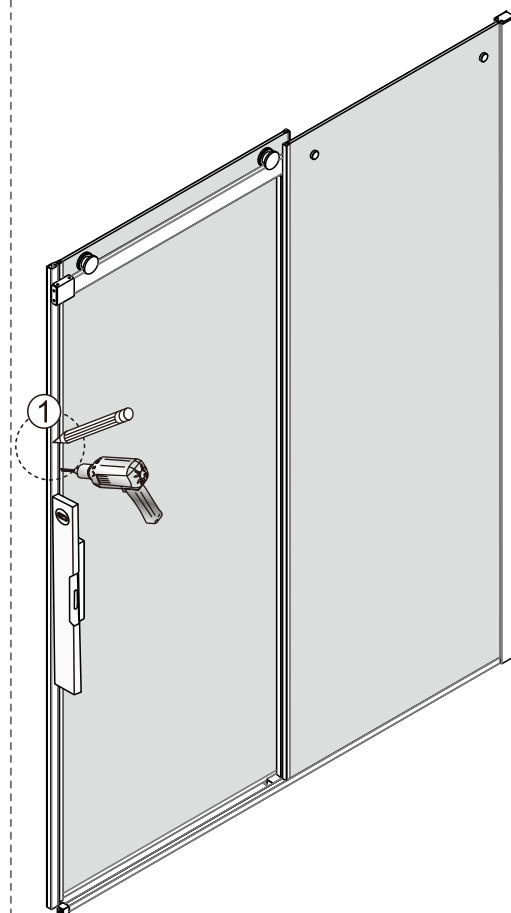




The gaps need to be adjust
to the minimal size

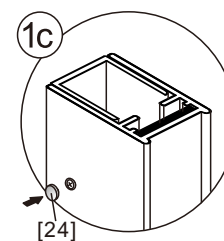
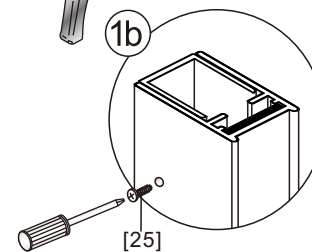
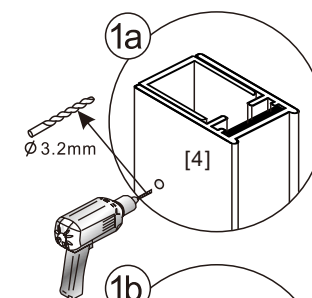
[2]		x1
[7]		x1
[14]		x2



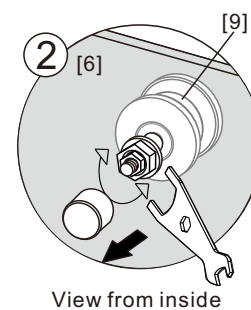
[3]		x1
[4]		x1
[22]		x4
[21]		x4(ST4x35)



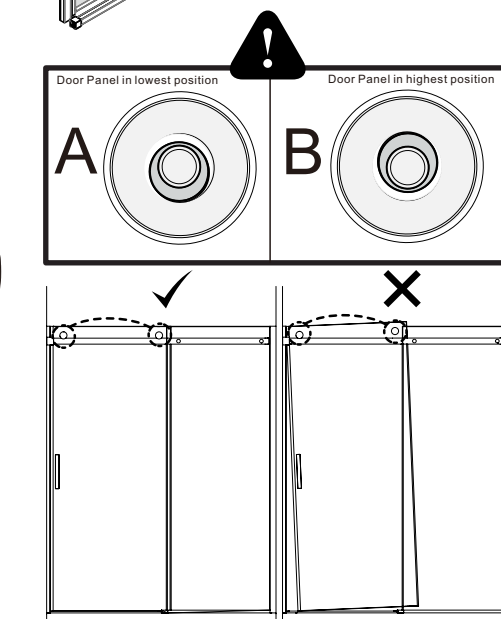
[24]		x3
[25]		x3(ST4x8)





View from inside

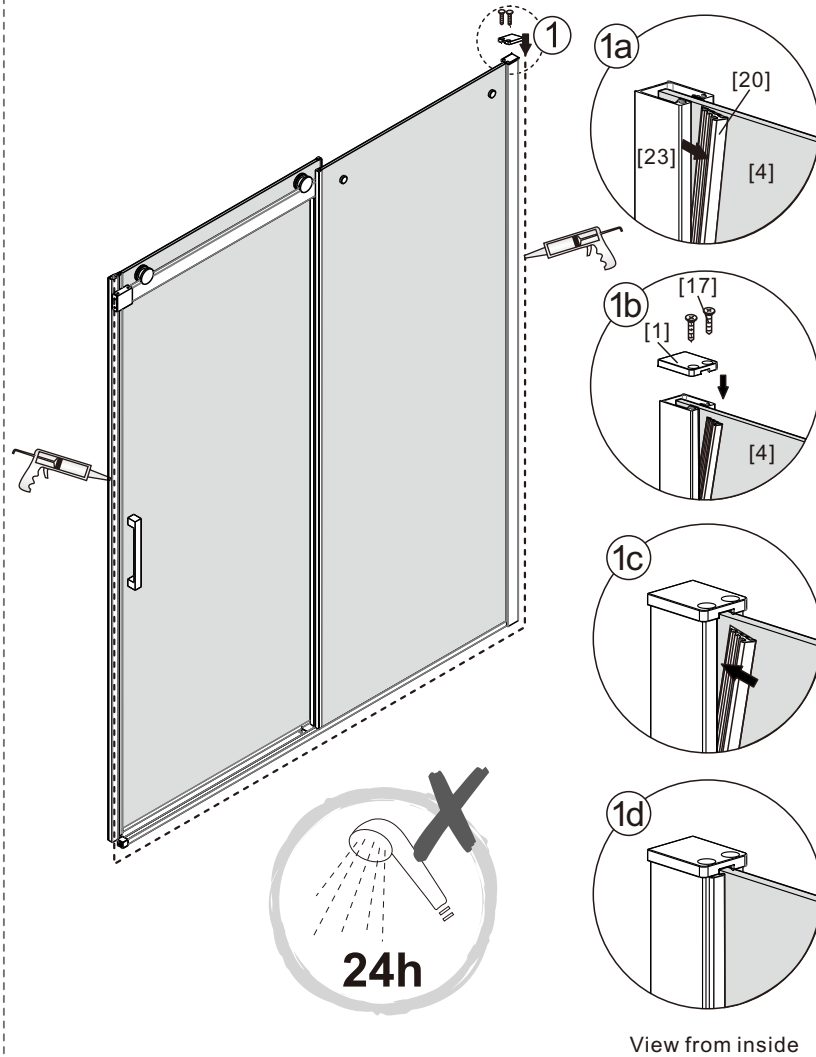


View from inside



11

[1]	
	x1
[28]	
	x2(ST4x16)



- Do not use the shower enclosure for at least 24 hours in order to allow the silicone sealant to cure fully.