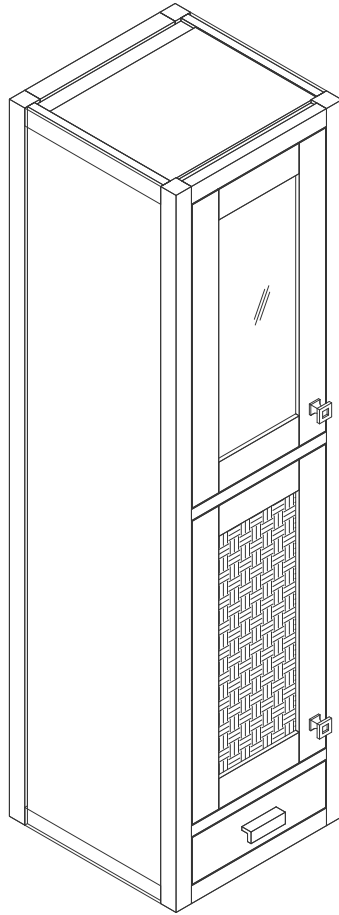


15"X15" ADDISON GRAND TOWER HUTCH-LEFT

E444-H15L-MCA

JAMES MARTIN
VANITIES



Features and Materials

Solids: Para Wood and Yellow Poplar

Veneers: Mango

Panels: MDF

Installation Type: Floor Standing with Wooden Stand (E444-ST15-MCA); or Coordinate with Base Cabinet(E444-BC15-MCA) & Countertop Unit(E444-CU30-MCA) or Wall Mounted

Number of Doors: Two

Number of Drawers: One

Number of Tip Outs: 0

LED Light: YES

Assembly Type: Attach to Wall for Wall Mount or Base for Freestanding (Hardware Included)

Door Panel: Reversible. One Side Finished in Mid-Century Acacia Color, One Side Natural Cork (Pattern: Herringbone)

Drawer Box Material and Construction: 15mm Poplar/English Dovetail Joinery

Hardware Material and Finish: Zinc Alloy in Burnished Nickel Color

Full Extension, Soft Close Glides

European Soft Close Hinges

Aluminum Laminate Drawer Liners

Dimension

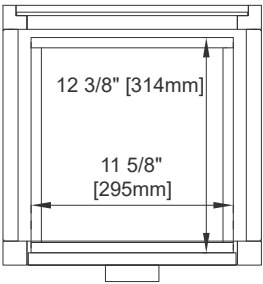
Width: 14-7/8"

Depth: 14-7/8"

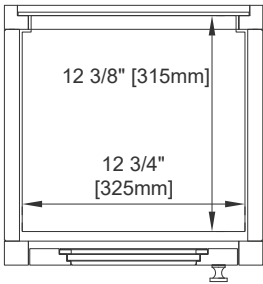
Height: 55-5/8"

15"X15" ADDISON GRAND
TOWER HUTCH-LEFT
E444-H15L-MCA

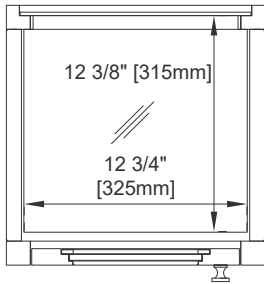
JAMES MARTIN
VANITIES



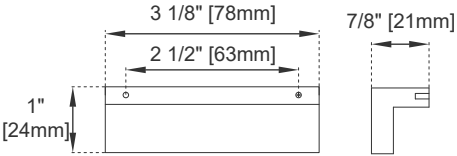
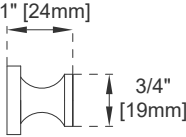
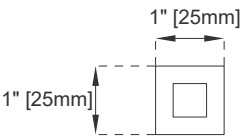
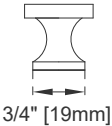
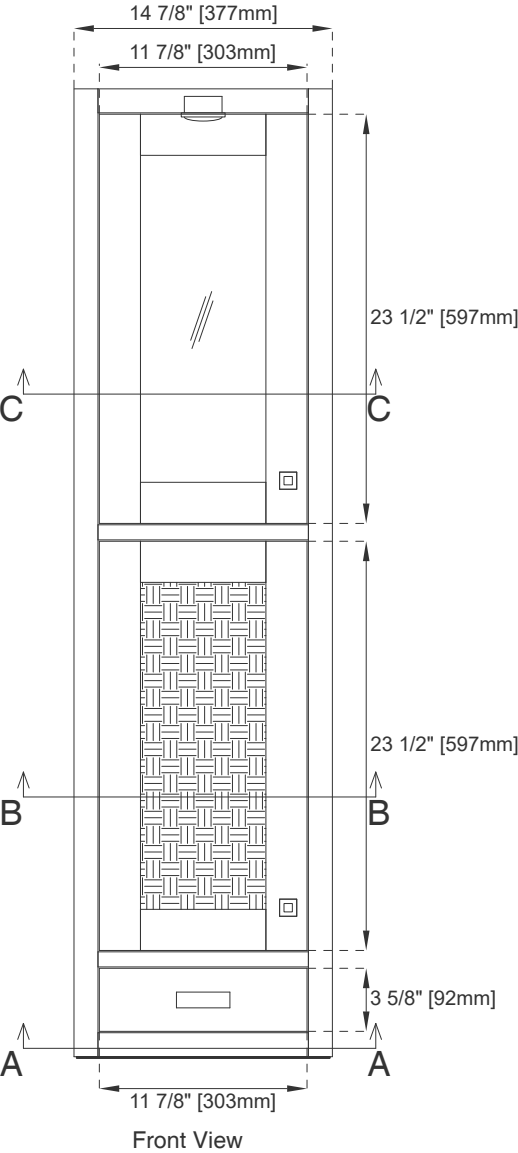
Top View 1
Section A-A



Top View 2
Section B-B



Top View 3
Section C-C



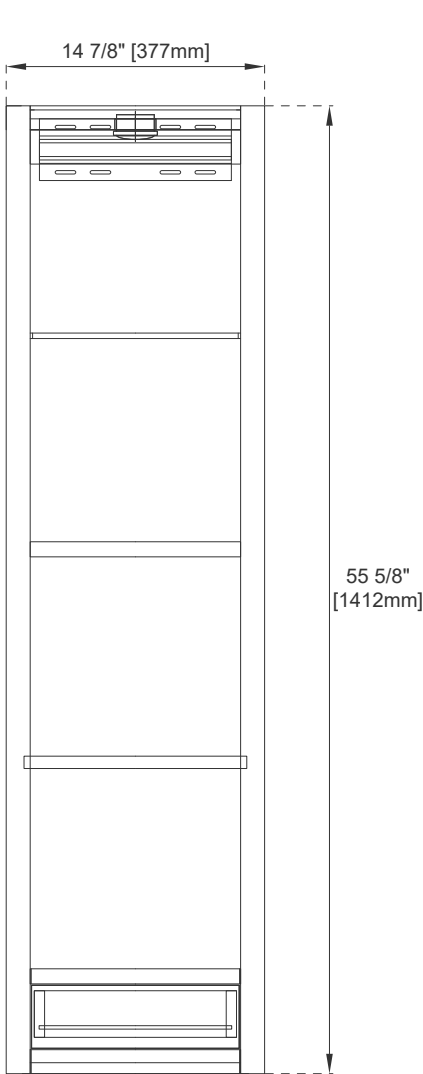
Knob

All dimensions are nominal

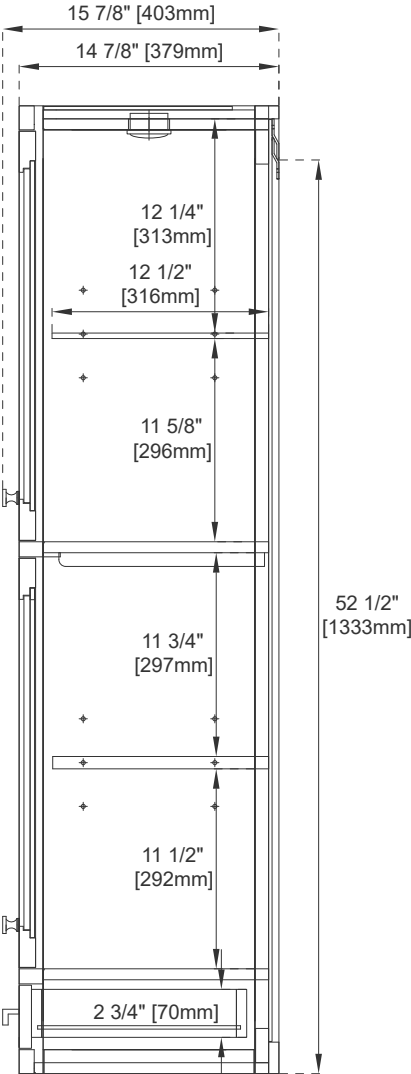
Visit website for warranty and installation information
www.jamesmartinvanities.com

15"X15" ADDISON GRAND
TOWER HUTCH-LEFT
E444-H15L-MCA

JAMES MARTIN
VANITIES



Back View



Side View

All dimensions are nominal

Visit website for warranty and installation information
www.jamesmartinvanities.com