



2022-Installation Instructions for In-the wall Combination Toilet Paper Holders







	<p>Use a stud finder to locate where the studs are in your wall. If possible, you'll want your product to go between the studs so that you do not have to cut through a stud.</p>
	<p>Measure the back of your unit and cut a template from scrap paper to those measurements, or, you can also use the product itself as a template. Place the template/product on the wall and trace around it with a pencil. Cut the hole in the drywall using a drill and drywall saw. Use a drill to drill a hole in each corner of the rectangle, then insert a drywall saw into each drilled hole and cut to the next one. (see figure A)</p>
	<p>Using construction adhesive (such as Liquid Nails® Brand) (See figure B) found at any hardware store, apply a bead all the way around the outer edge of the back of the toilet paper holder's frame overhang. (See figure C) Careful not to put too much or it will squeeze out once you insert it against the wall. The adhesive will be adhering to the <u>outside</u> surface of your drywall. Wipe away any excess with a damp rag quickly.</p>
	<p>Check to see which side is marked TOP. You will want that side UP. The roller is <u>NOT</u> centered in the holder. We do this on purpose. Once you hang the roll on the roller, because it is raised, it will self-center the roll and it will not drag on the inside bottom of the holder.</p>
	<p>Insert the toilet paper holder into the wall and press it into place. You will only have about a minute to make any adjustments to the position before the adhesive begins to tack.</p>
	<p>Hinge mounting holes have been pre-drilled inside the cabinet. The door is designed to only open one direction and is NOT reversible. Remove the cover cap on each hinge if you need to access the screw to remove the hinges. (See figure D) Hinges may be removed from the door for painting or staining if needed. Be sure not to lose the hinges as a replacement set will cost you. Have a partner help you by holding the door into place while you do the installation, it's easier! Place the door on the side of the cabinet and line up the hinges with the hinge holes marked on that side of the cabinet box. Screw the ¾" screws into the hinge hole (see figure E). The hinge should be resting right on the FRONT edge of the cabinet box itself.</p>



Figure A.



Figure B.

Applying Liquid Nails (Construction Adhesive)

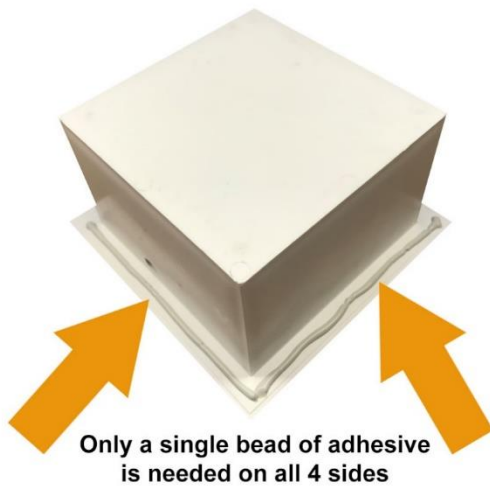


Figure C.



Figure E.

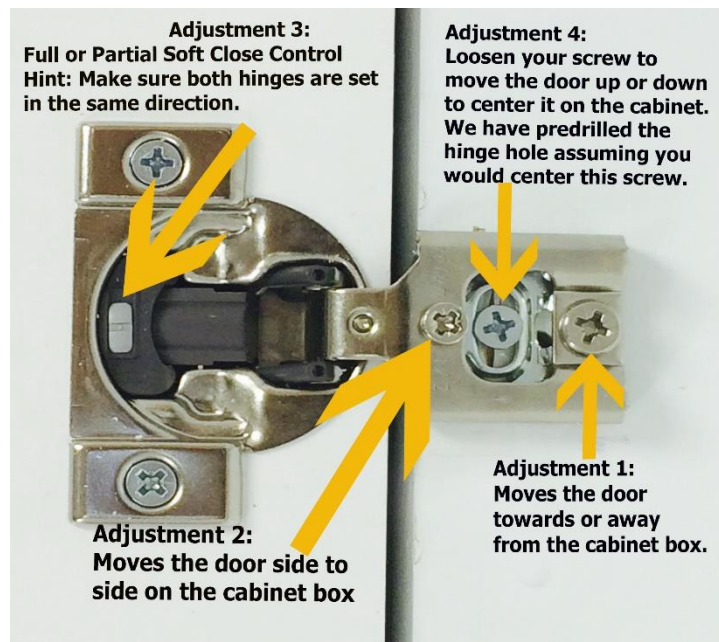


Figure D.

Hints and Tips for a Great Installation

Hinge Adjustments

There are 4 adjustments on this hinge. **See image below**




Adjustment #1 - Use this screw to move the door towards or away from the front of the cabinet box (to close the gap between the door and the box). It will only turn about 1/4 turn either way.

Adjustment #2 - Use this screw to move the door side to side. It will only turn about 1/4 turn either way.

Adjustment #3 - This switch is for full soft close or partial soft close. See tips on last page.

Adjustment #4 - You can loosen your hinge mounting screw and adjust the door slightly up or down, then re-tighten the screw.

Still have questions or need help?

	<p>Installation videos are on our website: WGWoodProducts.com Just click the link for Installation Videos or Support</p>
	<p>Or you can call us at 913-829-6000.</p>