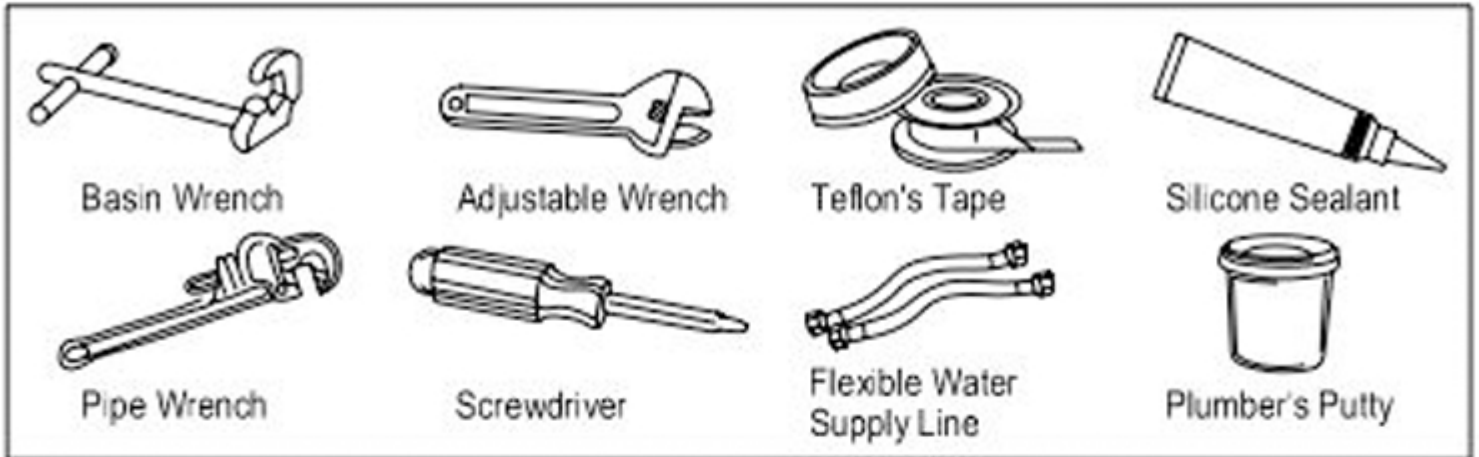


# Salta Gold Finish Single Handle Bathroom Sink Faucet

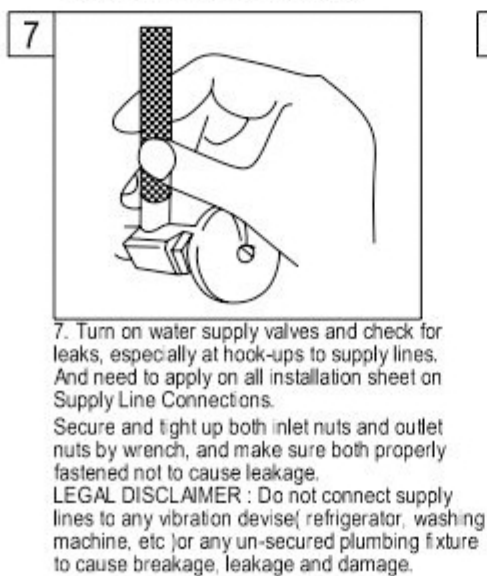
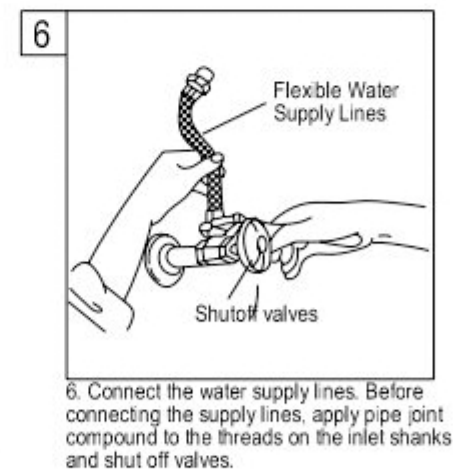
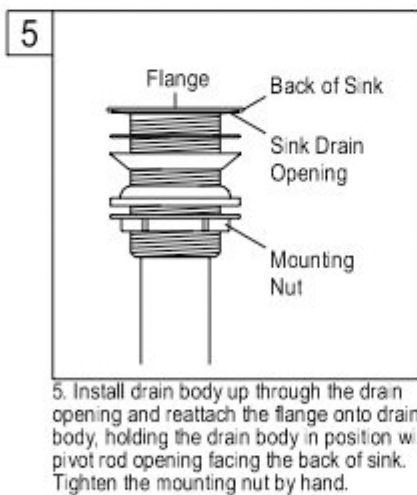
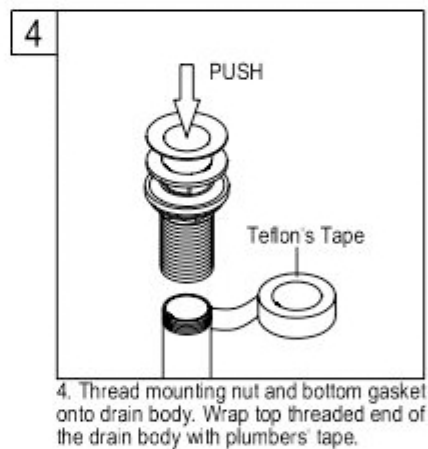
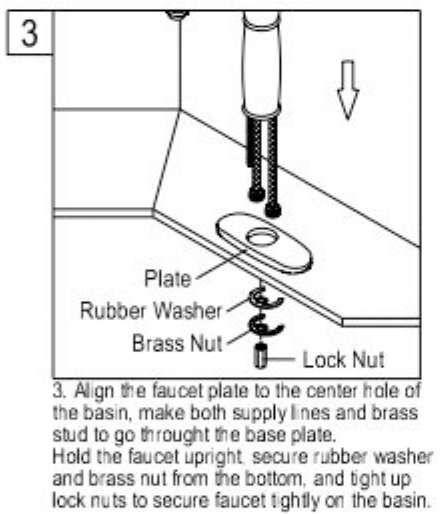
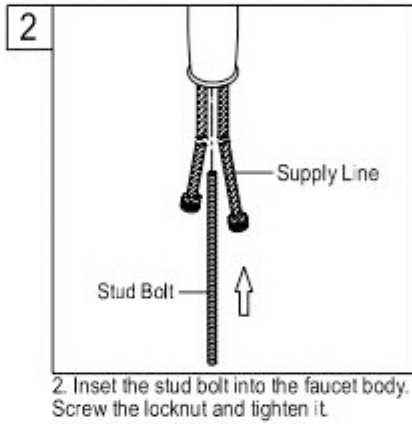
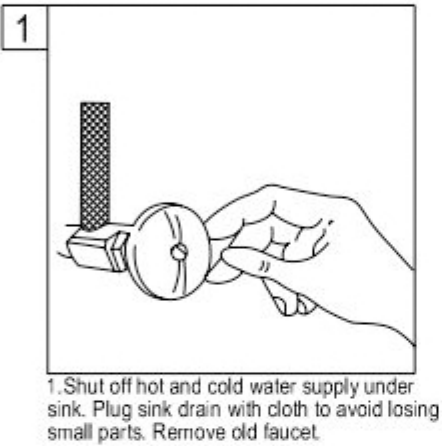


## INSTALLATION INSTRUCTIONS



### NOTE:

1. USE TEFLON TAPE ON ALL THREADED CONNECTIONS
2. FLUSH LINE BEFORE FAUCET INSTALLATION TO REMOVE DEBRIS IN LINES.
3. NO PLUMBER'S PUTTY ON ANY FINISH TO CORRODE FINISH OF FAUCET SURFACE.



This General diagram and installation instructions are not intended for any specific model, but is presented as a general guideline for Installations!