

**Central Brass Company, Inc.**

3325 S. Garfield Ave.  
Commerce, CA 90040  
(800) 321-8630  
www.centralbrass.com

**Tools:**



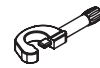
Adjustable  
Wrench



Power Drill



Teflon Tape



Pipe Cutter



Propane  
Torch



Lead-Free  
Solder

**Model Number: 0477, 0477-RC**

**Warnings and Notes:**

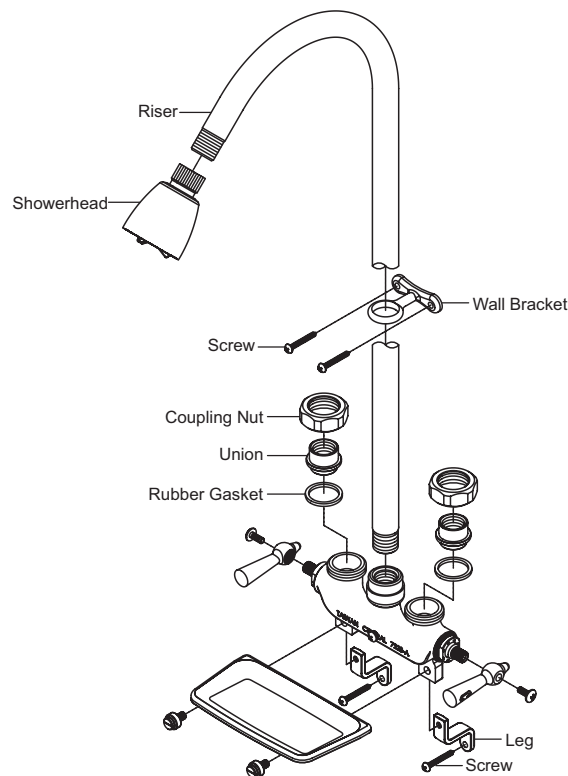
Check with local plumbing code requirements before installation.

This product should be installed by a local listed plumber.

**Do not use plumbers putty on threads.**

**Installation Steps:**

Two Handle Utility Shower



- (1) Measure the proper places to mount the wall brackets then drill two 3/32" holes for wall brackets' screw holes.
- (2) **For IPS connection:** Apply Teflon tape onto the thread end of inlet pipe line, slide coupling nut onto inlet pipe line, screw and tighten the union to inlet pipe thread end. Repeat the same procedure to connect the other inlet pipe line.  
**For CXC connection:** Slide coupling nut onto inlet pipe line, solder inlet pipe line to the union. Repeat the same procedure to connect the other inlet pipe line.
- (3) Slide bracket onto riser. Apply Teflon tape onto both thread ends of the riser. Carefully screw and tighten the spout straight into the top of faucet's center hole.
- (4) With rubber gasket under the union, tighten coupling nut of both sides to faucet inlet with the help of a wrench. Screw in the two screws to hold wall brackets secure.
- (5) With leg's threaded hole on top, place legs in the back of faucet, screw in the two slotted screws to hold soap dish and two legs secure. Screw in the two screws to leg's bottom hole to secure faucet. Attach showerhead to the thread end of the riser.