

## Limited Lifetime Faucet Warranty

fluid™ warrants its faucets to be free from defects in material and workmanship for as long as the original consumer purchaser owns his or her home.\* This warranty applies only in the original installation location. If a defect is found in normal residential use, fluid™ will, at its election, repair, provide a replacement part or product, or make an appropriate adjustment. fluid™ reserves the right to examine the product in question and its installation prior to replacement. This warranty is limited to replacement of defective parts only. Damage to a product caused by accident, improper installation, misuse, or abuse is not covered by this warranty. Improper care and cleaning will void the warranty.\*\* Replacement parts can be obtained from your local dealer or directly from the fluid™ warehouse. Dated proof of purchase from an authorized reseller must accompany all warranty claims. This warranty applies only to fluid™ faucets installed in the United States of America, Canada or Mexico (North America).

fluid™ recommends using a certified plumber for faucet installation and repair. Incidental and consequential damages, labor charges, shipping costs, repair or replacement costs are expressly excluded. In no event shall the liability of fluid™ exceed the purchase price of the faucet. Some states and provinces do not allow the exclusion or limitation of incidental or consequential damages, so the above limitation may not apply to you. This warranty gives you specific legal rights which vary from state/province to state/province. If you find any such problem with your product, please immediately contact your nearest fluid™ dealer or sales representative.

## Need Help?

For additional assistance or service call

Toll Free: (800) 460 7019

Fax: (604) 430 5050

[www.fluidfaucets.com](http://www.fluidfaucets.com)

\* Two year warranty on commercial applications.

\*\* Never use cleaners containing abrasive cleansers, ammonia, bleach, acids, waxes, alcohol, solvents or other products not recommended for surface finishes. This will void the warranty.

This faucet meets or exceeds the following standards:

ASME A112.18.1 / CSA B125.1

This product has been tested and certified by IAPMO.

# fluid |

**SSI**  
SUSTAINABLE  
SOLUTIONS  
INTERNATIONAL

## Installation Instructions for Dual Handle Widespread Deck-Mount Tub Filler



IAPMO LISTED



**SSI**  
SUSTAINABLE  
SOLUTIONS  
INTERNATIONAL

Sustainable Solutions International  
Telephone: (604) 430 2020  
Fax: (604) 430 5050  
Toll Free: (800) 460 7019  
[help@sustainablesolutions.com](mailto:help@sustainablesolutions.com)  
[www.sustainablesolutions.com](http://www.sustainablesolutions.com)

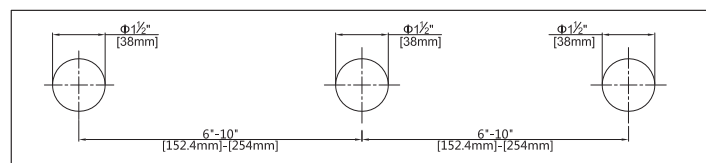
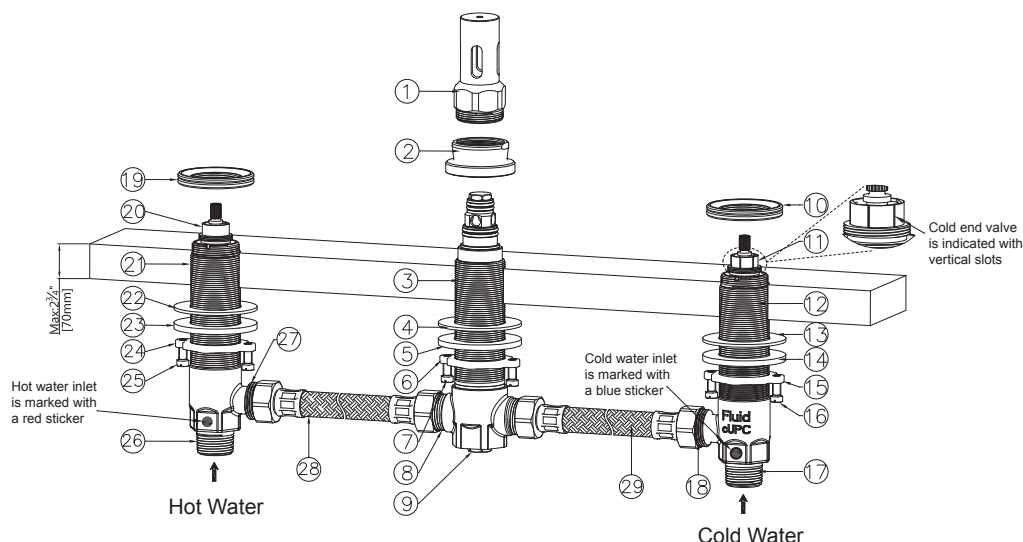
Dual Handle Widespread Deck-Mount Tub Filler/2015/0

Please Keep This Manual and Supplied Tools For Future Use

# Tools Required for Installation



## Dual Handle Widespread Deck-Mount Tub Filler Rough-In F2004B



Hot Control Valve

Spout Assembly

Cold Control Valve

# Installation Instructions

## Dual Handle Widespread Deck-Mount Tub Filler Rough-In F2004B

- Shut off cold and hot water supplies.
- Before installation, make sure the finished deck thickness is no more than 2-3/4" (70mm).
- The rough-in may be installed anywhere on the deck. The distance of the center of spout assembly (#3) to the center of cold and hot control valves (#12 and #21) is recommended min 6" (152mm) and max 10" (254mm).
- On the finished deck, mark rough-in valve installation location. Drill 1-1/2" (38mm) in diameter for spout assembly (#3), cold and hot control valves (#12 and #21).
- From underneath the deck, insert spout assembly (#3) with attached mounting nut (#6), plate (#5) and gasket (#4) through the hole.
- From above the deck, hand tighten top nut (#2) onto spout assembly (#3) until it stops.
- From underneath the deck, hand tighten mounting nut (#6) until it stops. Then tighten locking screws (#7) with a screw driver to secure spout assembly (#3).
- From underneath the deck, insert cold control valve (#12) with attached mounting nut (#15), plate (#14) and gasket (#13) through the hole. Note: cold control valve (#12) is marked with a blue sticker at its inlet port as well as indicated with vertical slots on the black ring (#11) of the cartridge.
- From above the deck, hand tighten top nut (#10) onto cold control valve (#12) until it stops.
- From underneath the deck, hand tighten mounting nut (#15) until it stops. Then tighten locking screws (#16) with a screw driver to secure cold control valve (#12).
- Repeat step #8, #9 and #10 to install hot control valve (#21).
- Connect open port of spout assembly (#3) to outlet port of cold control valve (#18) and outlet port of hot control assembly (#27) with the supplied 3/4" braided hoses (#28 and #29).  
NOTE: Make sure braided hoses (#28 and #29) are free of kinks when they are connected.
- Connect cold control valve (#12) marked with a blue sticker to cold water supply and hot control valve (#21) marked with a red sticker to hot water supply using proper 1/2" fittings (flexible hose, copper tubing, iron pipe or PEX). Check local codes for choosing proper connection.
- For 3/4" IPS Thread Connections, apply Teflon tape or other thread sealant onto threaded ends and connect water supply flexible hose or pipe to inlet port of cold control valve (#17) and inlet port of hot control valve (#26).
- For 1/2" Copper Tube Soldering Connections, solder water supply tube to inlet port of cold control valve (#17) and inlet port of hot control valve (#26).  
NOTE: Prior to soldering, remove hot and cold cartridges by pulling black ring (#11 & #20) straight up with a small flat head screw driver and unscrewing retaining nut with an adjustable wrench. Avoid soldering excessively at high temperature.

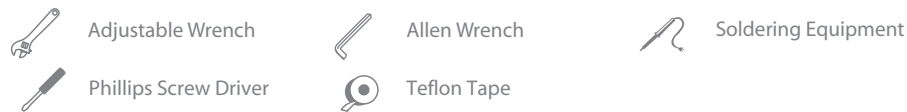
### LEAK TEST

- Push test cap (#1) onto the top of spout assembly (#3) and thread onto top nut (#2) until it stops.
- Turn on cold and hot water supply lines and inspect all connections for leaks.

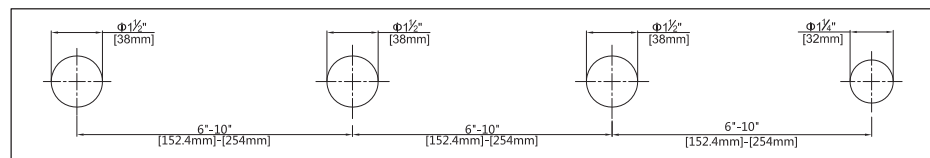
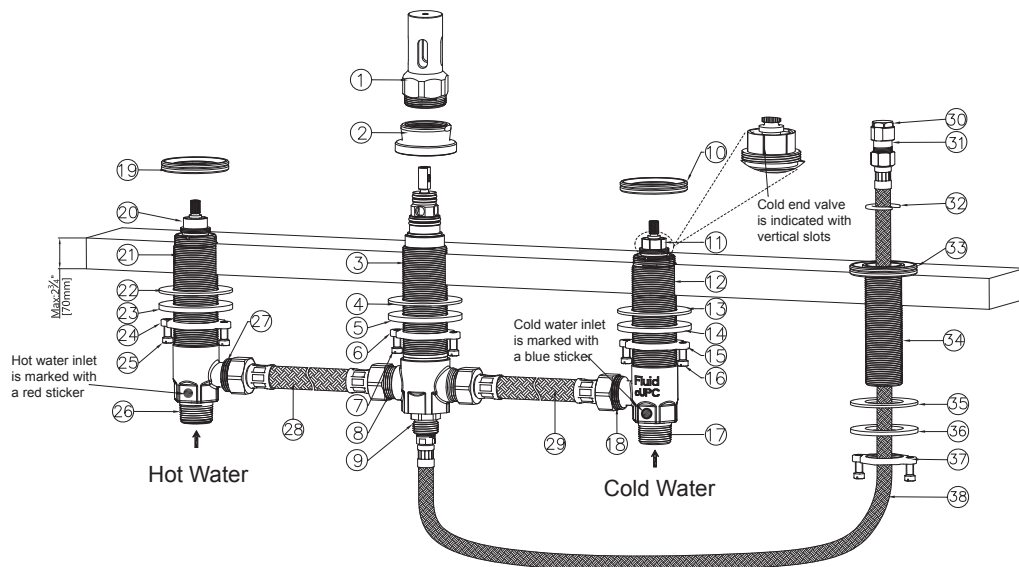
## Specifications:

Flow Rate	Greater than 13.5 gpm or 51 L/min at 60 psig
Flow pressure	15-80 psi
Max temperature	176 °F or 80 °C
Inlet connection	3/4" NPT or 1/2" CxC

# Tools Required for Installation



## Dual Handle Widespread Deck-Mount Tub Filler Rough-in with Built-in Diverter F2005B



# Installation Instructions

## Dual Handle Widespread Deck-Mount Tub Filler Rough-in with Built-in Diverter F2005B

- Shut off cold and hot water supplies.
- Before installation, make sure the finished deck thickness is no more than 2-3/4" (70mm).
- The rough-in may be installed anywhere on the deck. The distance between rough-in is recommended min 6" (152mm) and max 10" (254mm).
- On the finished deck, mark rough-in valve installation location. Drill 1-1/2" (38mm) in diameter for diverter spout assembly, cold and hot control valves (#12 & #21), and drill 1-1/4" (32mm) in diameter for hand shower assembly (#34).
- From underneath the deck, insert diverter spout assembly (#3) with attached mounting nut (#6), plate (#5) and gasket (#4) through the hole.
- From above the deck, hand tighten top nut (#2) onto diverter spout assembly (#3) until it stops.
- From underneath the deck, hand tighten mounting nut (#6) until it stops. Then tighten locking screws (#7) with a screw driver to secure diverter spout assembly (#3).
- From underneath the deck, insert cold control valve (#12) with attached mounting nut (#15), plate (#14) and gasket (#13) through the hole. NOTE: cold control valve (#12) is marked with a blue sticker at its inlet port and features vertical slots on the black ring (#11) of the cartridge.
- From above the deck, hand tighten top nut (#10) onto cold control valve (#11) until it stops.
- From underneath the deck, hand tighten mounting nut (#15) until it stops. Then tighten locking screws (#16) with a screw driver to secure cold control valve (#12).
- Repeat step #8, #9 and #10 to install hot control valve (#21).
- Connect side ports of diverter spout assembly (#3) to outlet port of cold control valve (#18) and outlet port of hot control valve (#27) with the supplied 3/4" braided hoses (#28 and #29). NOTE: Make sure braided hoses (#28 and #29) are free of kinks when they are connected.
- From above the deck, insert hand shower assembly (#34) through the hole.
- From underneath the deck, slide mounting gasket (#35) and plate (#36) onto hand shower assembly (#34). Then tighten mounting nut (#37) by hand until it stops, and tighten locking screws with a screw driver to secure.
- From underneath the deck, insert the capped end (#30) of the braided hose (#38) through hand shower assembly (#34).
- Push plastic clip (#32) onto the braided hose (#38) close to the capped end (#30). Slide down plastic clip (#32) along the braided hose (#38) and ensure that plastic clip (#32) sits inside the groove of hand shower assembly's top flange (#33) to prevent the capped hose end (#30) from dropping below the finished deck.
- Connect cold control valve (#12) marked with a blue sticker to cold water supply and hot control valve (#21) marked with a red sticker to hot water supply using proper 1/2" fittings (flexible hose, copper tubing, iron pipe or PEX). Check local codes for choosing proper connection.
- For 3/4" IPS Thread Connections, apply Teflon tape or other thread sealant onto threaded ends and connect water supply flexible hose or pipe to inlet port of cold control valve (#17) and inlet port of hot control valve (#26).
- For 1/2" Copper Tube Soldering Connections, solder water supply tube to inlet port of cold control valve (#17) and inlet port of hot control valve (#26). NOTE: Prior to soldering, remove hot and cold cartridges by pulling black ring (#11 & #20) straight up with a small flat head screw driver and unscrewing retaining nut with an adjustable wrench. Avoid soldering excessively at high temperature.

### LEAK TEST

- Push test cap (#1) onto the top of diverter spout assembly (#3) and thread onto top nut (#2) until it stops.
- Make sure braided hose (#38) is capped with a test plug (#30).
- Turn on cold and hot water supply lines and inspect all connections for leaks.

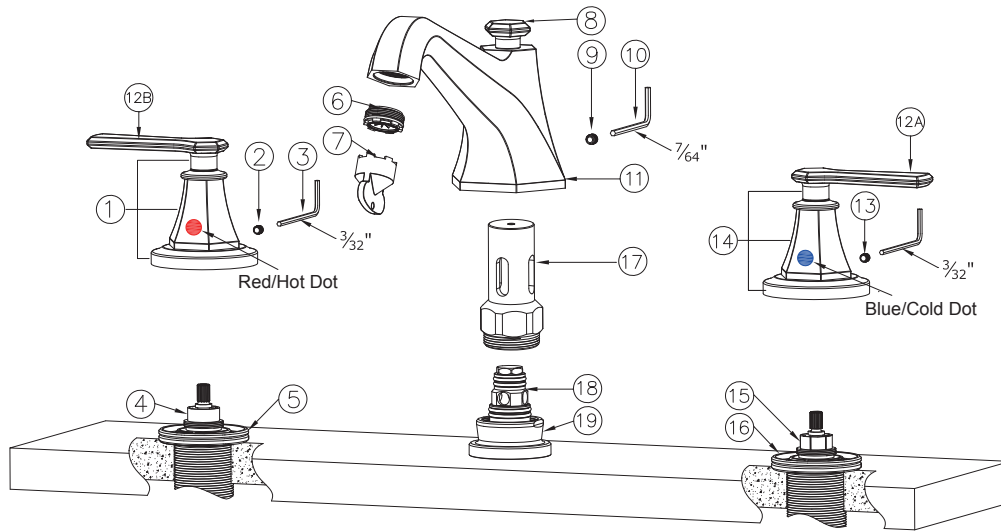
# Tools Required for Installation



Allen Wrench



Adjustable Wrench



## Operation Instructions

1. Cold handle (#12A) and hot handle (#12B) are used to open and regulate the water flow rate and temperature.
2. Open handles (#12A & 12B) and water flows out of spout (#11).

# Installation Instructions

## Dual Handle Widespread Deck-Mount Tub Filler Trim

1. Remove test plug (#17) by unscrewing counter-clockwise from spout assembly unit (#19).
2. Push spout (#11) onto spout assembly unit (#19) until it stops.
3. At the bottom end of spout (#11), tighten set screw (#9) with the supplied 7/64" Allen wrench (#10).
4. Place cold handle assembly (#14) so that the blue/cold dot faces to the front and the lever handle (#12A) points to the right while in OFF position over cold cartridge (#15) and top nut (#16). Tighten set screw (#13) with the supplied 3/32" Allen wrench (#3).  
NOTE: cold cartridge (#15) is indicated with vertical slots on black ring.
5. Place hot handle assembly (#1) so that the red/hot dot faces to the front and handle lever (#12B) points to the left while in OFF position over hot cartridge (#4) and top nut (#5). Tighten set screw (#2) with the supplied 3/32" Allen wrench (#3).  
NOTE: To adjust handle lever (#12A & 12B), untighten set screw (#2 & 13) with the supplied 3/32" Allen wrench (#3) and pull handle assembly (#1 & 14) straight up. Rotate handle lever (#12A & 12B) to point outwards away from spout (#11) while in OFF position.

## Care & Maintenance Instructions

fluid products are designed and engineered under strict quality standards. Regular and proper care of our products will ensure years of trouble-free service.

Almost all maintenance work can be carried out from above the finished deck.

For Cartridge:

To clean or replace a damaged cartridge, pull handle assembly (#1 & 14) straight up after untightening set screw (#2 & 13) with the supplied 3/32" Allen wrench (#3). Use a small flat head screw driver to remove black ring (#4 & 15) to expose the cartridges, then unscrew the cartridge with an adjustable wrench. Pull out the cartridge and replace with a new cartridge if damaged.

For Flow Straightener:

Regularly remove flow straightener (#6) with the supplied service key (#7) and wash with clean running water and ensure that any trapped debris has been removed.

For Surface Finish:

To clean, use a soft and damp cloth with warm soapy water followed by rinsing with clean water and drying with a soft cloth. Do not use abrasive or harsh cleaners as they may result in finish damage.

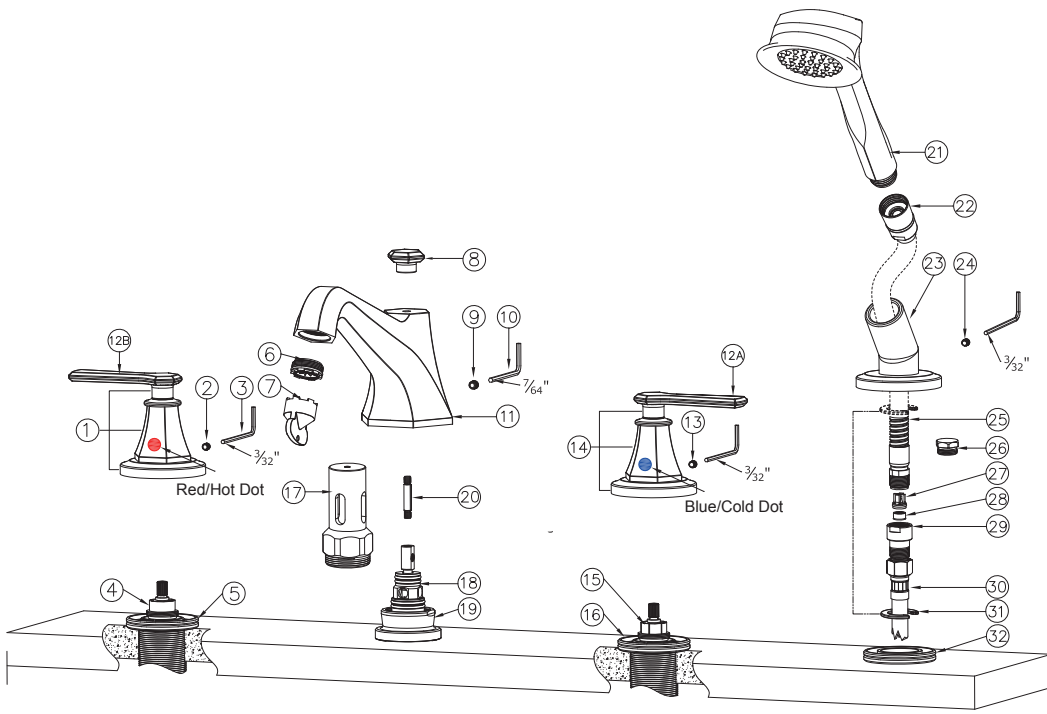
# Tools Required for Installation



Allen Wrench



Adjustable Wrench



## Operation Instructions

1. Cold handle (#12A) and hot handle (#12B) are used to open and regulate the water flow rate and temperature.
2. Lifting the diverter knob (#8) will redirect the flow of water from the spout (#11) to the hand shower (#21). Pressing back down on the diverter knob (#8) will direct the water flow back to the spout (#11).  
NOTE: Opening the handles from the OFF position will always start water flowing initially from the spout (#11).

# Installation Instructions (for top diverter)

## Dual Handle Widespread Deck-Mount Tub Filler Trim with Hand Shower

1. Remove test plug (#17) by unscrewing counter-clockwise from spout assembly unit (#19).
2. Screw diverter rod (#20) into the top of diverter (#18) and tighten with an adjustable wrench.
3. Push spout (#11) onto spout assembly unit (#19) until it stops.
4. At the bottom end of spout (#11), tighten set screw (#9) with the supplied 7/64" Allen wrench (#10).
5. Screw diverter knob (#8) onto the top of diverter rod (#20). While lifting diverter knob (#8), use an adjustable wrench to hold in place and then tighten diverter knob by hand.
6. Place cold handle assembly (#14) so that the blue/cold dot faces to the front and the handle lever (#12A) points to the right while in OFF position over cold cartridge (#15) and top nut (#16) of cold control unit and tighten set screw (#13) with the supplied 3/32" Allen wrench (#3). NOTE: cold cartridge (#15) is indicated with vertical slots on black ring.
7. Place hot handle assembly (#1) so that the red/hot dot faces to the front and the handle lever (#12B) points to the left while in OFF position over hot cartridge (#4) and top nut (#5) of hot control unit and tighten set screw (#2) with the supplied 3/32" Allen wrench (#3).  
NOTE: To adjust handle lever (#12A & 12B), untighten set screw (#2 & 13) with the supplied 3/32" Allen wrench (#3) and pull handle assembly (#1 & 14) up. Rotate handle lever (#12A & 12B) to point outwards away from spout (#11) while in OFF position.
8. Insert shower hose (#22) through elbow (#23) until the conical nut (#23) sits inside elbow (#23).
9. Connect shower hose (#22) to braided hose connector (#29) by tightening the swivel nut at the end of shower hose with an adjustable wrench.
10. Pull out plastic clip (#31) from braided hose (#30), move it up and push onto the part of shower hose (#22) underneath elbow (#23).
11. Carefully drop elbow (#23) along with shower hose (#22) and ensure plastic clip (#31) sits inside the groove in the flange (#32) in order to prevent braided hose (#30) from dropping below the mounting deck.
12. Place elbow (#23) over flange (#32) and secure it with set screw (#24) with the supplied Allen wrench (#3).
13. Screw hand shower (#21) into the conical nut (#22) of the shower hose.

## Care & Maintenance Instructions

fluid products are designed and engineered under strict quality standards. Regular and proper care of our products will ensure years of trouble-free service.

Almost all maintenance work can be carried out from above the finished deck.

### For Cartridge:

To clean or replace a damaged cartridge, pull handle assembly (#1 & 14) straight up after untightening set screw (#2 & 13) with the supplied 3/32" Allen wrench (#3). Use a small flat head screw driver to remove black ring (#4 & 15) to expose the cartridge, then unscrew the cartridge with an adjustable wrench. Pull out the cartridge and replace with a new cartridge if damaged.

### For Diverter:

Untighten and remove diverter knob (#8). Loosen set screw (#9) with supplied 7/64" Allen wrench (#10) and pull spout (#11) up to expose diverter (#18). Unscrew and remove diverter rod (#20). Use an adjustable wrench to hold top nut (#19) in place and use another adjustable wrench to clamp onto flat spots of diverter (#18) and turn counter-clockwise to loosen and remove diverter (#18). Replace with a new diverter if damaged.

### For Flow Straightener:

Regularly remove flow straightener (#6) with the supplied service key (#7) and wash with clean running water and ensure that any trapped debris has been removed.

### For Flow Restrictor and Check Valve:

After removing hand shower (#21), loosen set screw (#24) with supplied 3/32" Allen wrench (#3) and lift up elbow (#23). Pull up shower hose (#22) until braided hose (#30) comes up above the deck. Move plastic clip (#31) from shower hose (#22) down to braided hose (#30). After ensuring plastic clip (#31) holds up braided hose (#30) above the deck, unscrew and remove connector (#29) and use a small hook to remove flow restrictor (#28) and check valve (#27) for inspection and replace if damaged.

### For Surface Finish:

To clean, use a soft and damp cloth with warm soapy water followed by rinsing with clean water and drying with a soft cloth. Do not use abrasive or harsh cleaners as they may result in finish damage.

NOTES:

---

---

---

NOTES:

---

---

---