

## HEPBURN 36" RIGHT OFFSET CABINET

# ARIEL

T036S-R



### BASE CABINET DIMENSIONS

36" W x 21.5" D x 34.5" H

### FEATURES

- Solid wood frame & plywood panels
- Dovetail drawers and joints
- Soft closing doors & drawers

### HARDWARE FINISHES



Brushed Nickel



Satin Brass



Matte Black



Polished Chrome

### AVAILABLE COLORS



White

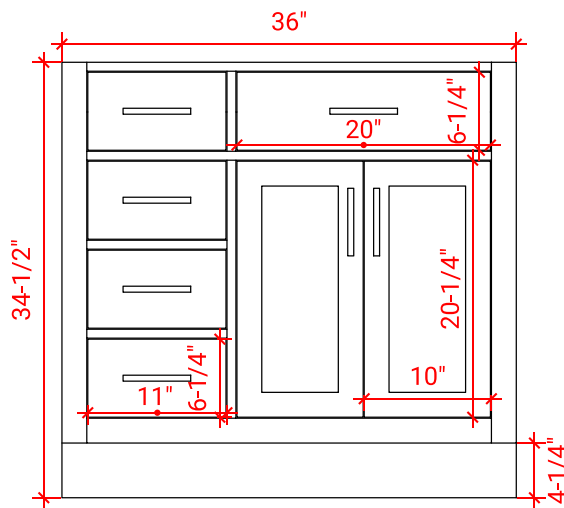


Grey

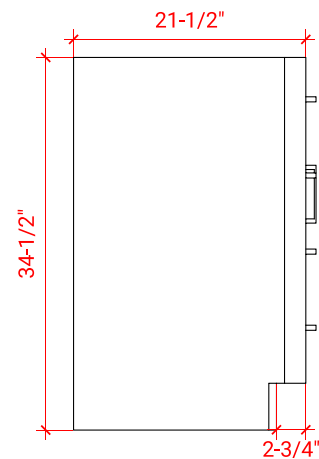


Midnight Blue

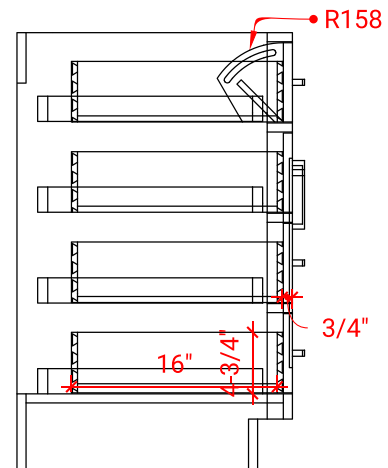
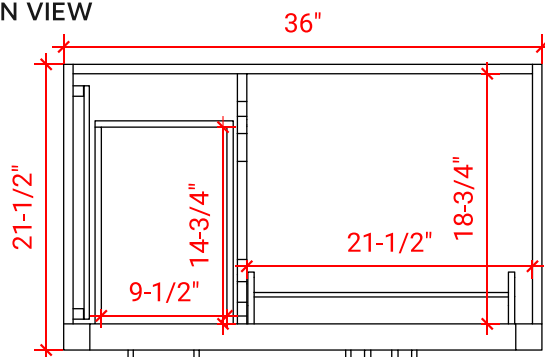
### FRONT VIEW



### SIDE VIEW



### PLAN VIEW



# ARIEL

36.25" W x 22".D x 1.5" H

- Solid countertop with mitered edges & seams
- Undermount white oval sink
- Pre-drilled for 8" widespread faucet

- Countertop
- Matching Backsplash
- Oval Sink

Technical drawing of a rectangular plate with a central circular hole and three small circular holes at the top. The dimensions are as follows:

- Overall width:  $36\frac{1}{4}"$
- Overall height:  $22"$
- Distance from top edge to the center of the top row of three small holes:  $2\frac{1}{2}"$
- Distance between the centers of the two outer small holes:  $8"$
- Distance from the center of the rightmost small hole to the right edge:  $1\frac{3}{8}"$
- Distance from the top edge to the top of the central circular hole:  $4\frac{1}{2}"$
- Distance from the bottom edge to the bottom of the central circular hole:  $4"$
- Distance from the left edge to the left of the central circular hole:  $16\frac{1}{4}"$
- Distance from the right edge to the right of the central circular hole:  $12\frac{3}{4}"$
- Distance from the top of the central circular hole to the top edge:  $13"$

Technical drawing of a mechanical part. The part has a stepped profile. The top horizontal surface is 1-1/2" wide. The bottom horizontal surface is 3/4" wide. The vertical height of the part is 3/4". A dashed line indicates a fillet or chamfer at the bottom right corner, labeled R2.

Isometric view of a rectangular plate with a circular hole and three small circles. Dimensions are shown in red: 22" for the left side, 36-1/4" for the bottom side, 4" for the right side, and 1-1/2" for the depth.