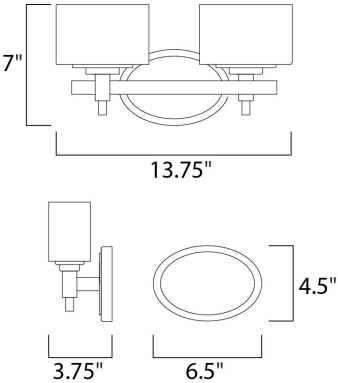




PRODUCT DESCRIPTION

The soft round curves of this design are evident in every detail. The use of xenon allows for a profile that is delicate in scale. The Lola collection is available in Polished Nickel finish with Satin White glass or Oil Rubbed Bronze finish with Dusty White glass.



MEASUREMENTS

DIMENSION : 13.75" W x 7" H x 3.75" Ext
BACK PLATE : 6.54" W x 4.5" H x 5" HCO
HANGING WEIGHT : 3.75 lb

LAMPING

INPUT VOLTAGE : 120V
LUMENS : 1,600 Rated
BULB : 2 x 40W Xenon G9 , 80W Total
BULB INCLUDED : (Included)
DIMMABLE : Yes
COLOR_TEMP : 2900K

FINISHES OPTION

- Oil Rubbed Bronze
- Polished Nickel

GLASS

Satin White SW

MATERIAL

Steel, Glass

RATINGS

cETLus
Damp Location
ADA



ADDITIONAL

INSTALL UP/DOWN: Up
RATED LIFE 2000 Hours
OPERATING TEMPERATURE:
-20°C (-4°F), 40°C (104°F)

Always consult a qualified electrician before installing any lighting product.



WESTERN DISTRIBUTION CENTER (HEADQUARTER)
253 NORTH VINELAND AVE | CITY OF INDUSTRY, CA 91746
EASTERN DISTRIBUTION CENTER
4200 SHIRLEY DR. | ATLANTA, GA 30336
P. 626.956.4200 | F. 626.956.4225 | maximlighting.com