






# ASSEMBLY INSTRUCTION

Item#: 5603-75001-LTBR Round Dining Table Base  
5603-75002-LTBR Round Dining Table Top

\*\*\* Please make sure you have all parts indicated below prior to assembly.  
This unit is heavy and can best be assembled with the help of two or more people

NO.	HARDWARE LIST		Q'TY
A		ALLEN WRENCH	1
B		BOLT	4
C		LOCK WASHER	4
D		FLAT WASHER	4
E		PLASTIC PAD	18

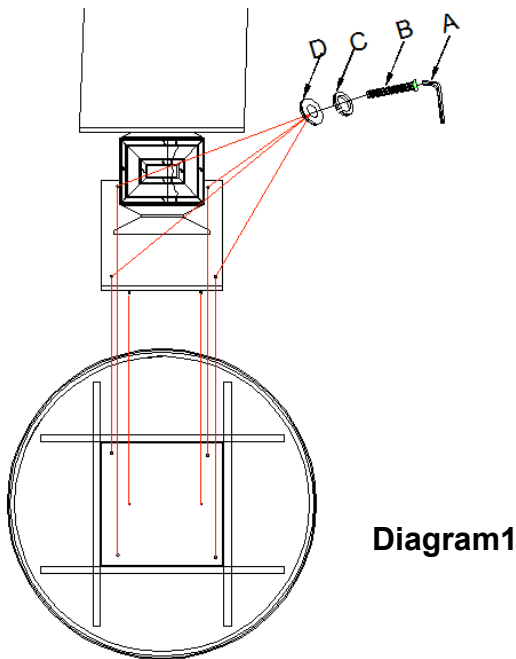
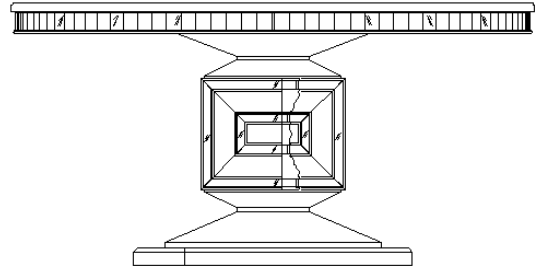


Diagram1

## Assembly steps:

1. Place table top upside down on a soft surface to prevent it from being scratched.
2. Attach base to top by using bolts (B), lock washers (C) and flat washers (D), secure with allen wrench (A) in clockwise direction.(See diagram1)

**Caution: Do not over tighten.**

## Tips:

Please kindly see diagram 2 for plastic pad (E) suggested locations

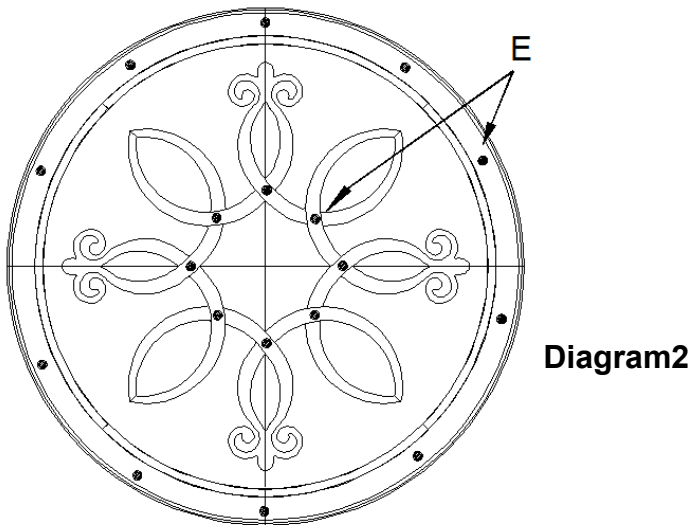


Diagram2

**Cleaning Instruction:** Clean finished parts with a mild dishwashing liquid and water solution on a damp cloth.  
Polish the finish with soft cloth and an industry recognized furniture polish.