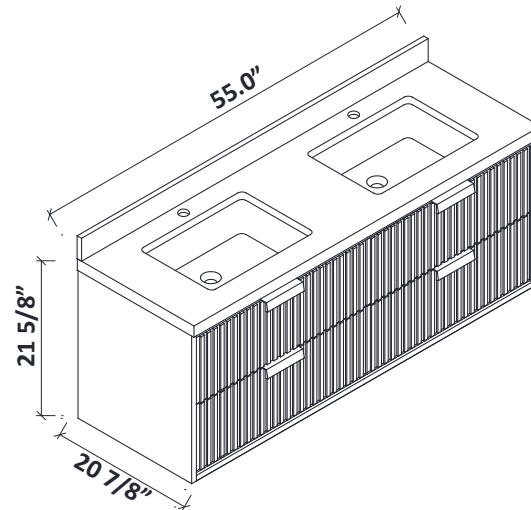
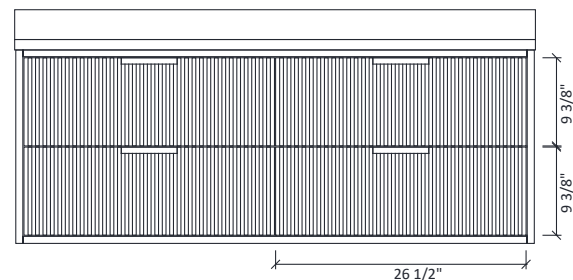
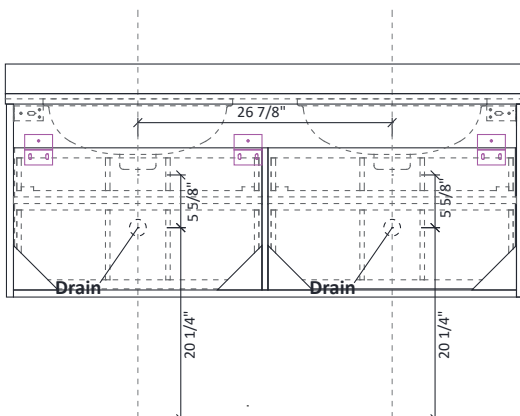
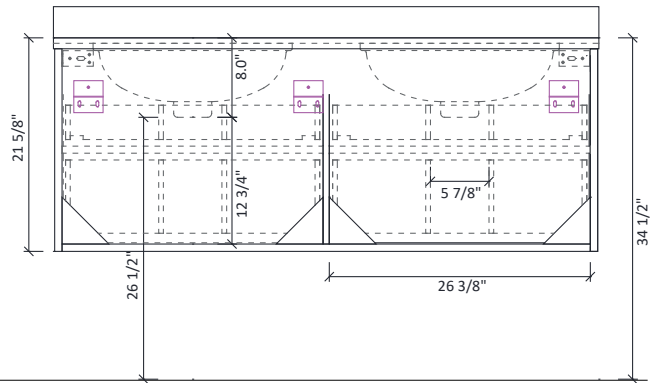
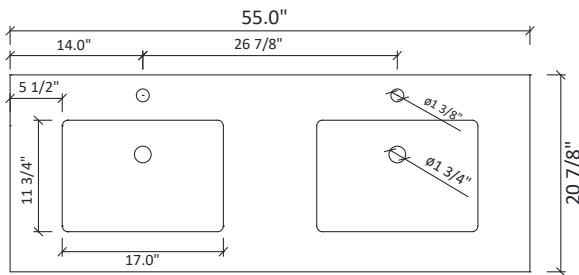


# San Diego 55 Floating Vanity Installation Instruction



## DIMENSIONS



### **WARNING !**

*In the hole on the wall, please be sure to be careful to avoid the internal cables and pipelines.*



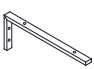
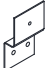



## MATERIALS & TOOLS

*Safety glasses, Pencil, Level, Tape measure, Stud Finder, Assorted screwdrivers, Assorted Wrenches, Drill, Screw gun, Caulking gun, Hammer, Screws, Nail anchors/Molly screws.*

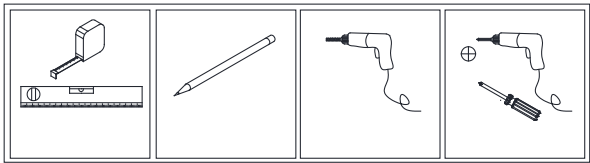
INSTALLATION GUIDE

Step 1

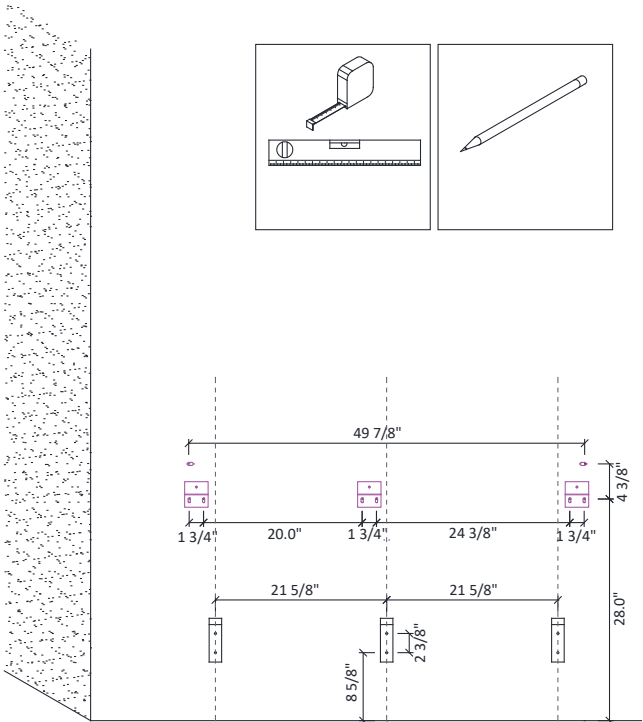
PARTS

 A x8	 B x8	 C x3	 D x3
 E x14	 F x6	 G x3	

TOOLS REQUIRED

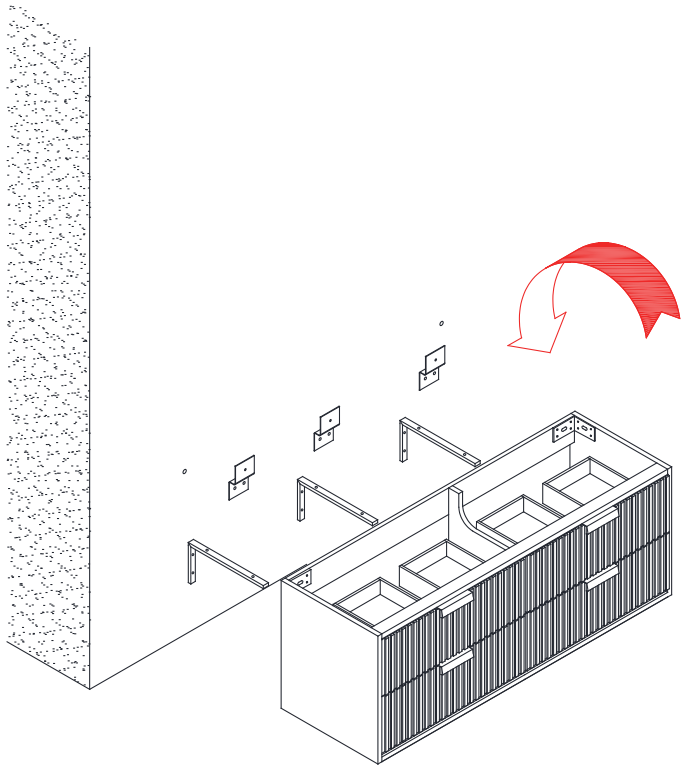
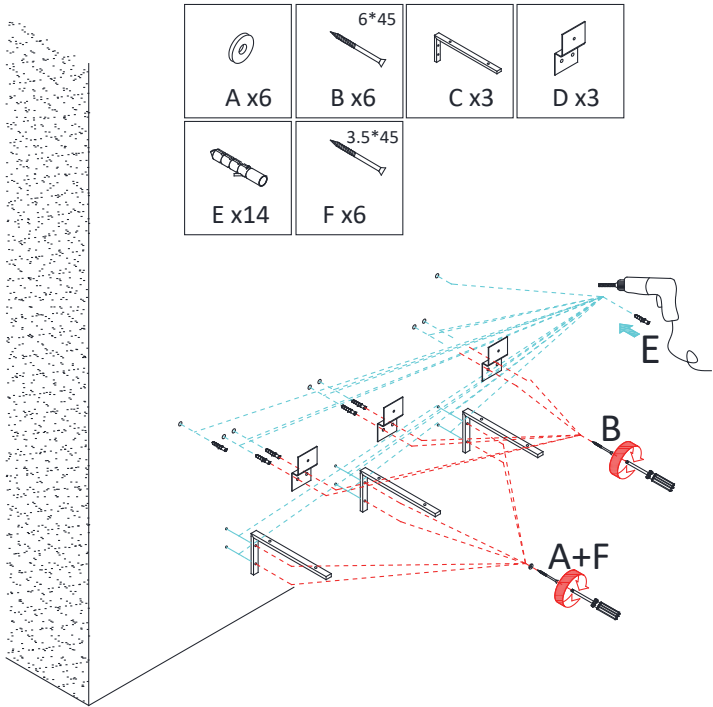


Step 2



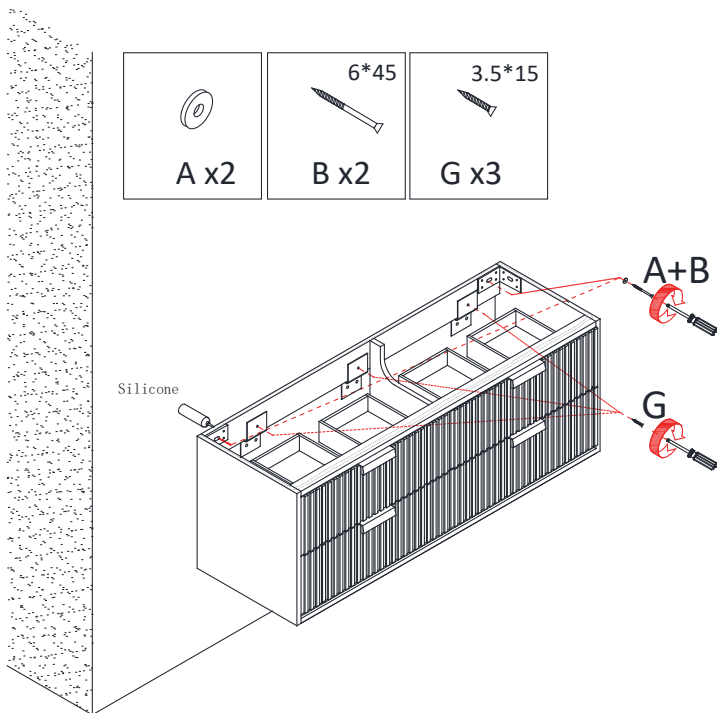
Step 3

Step 4

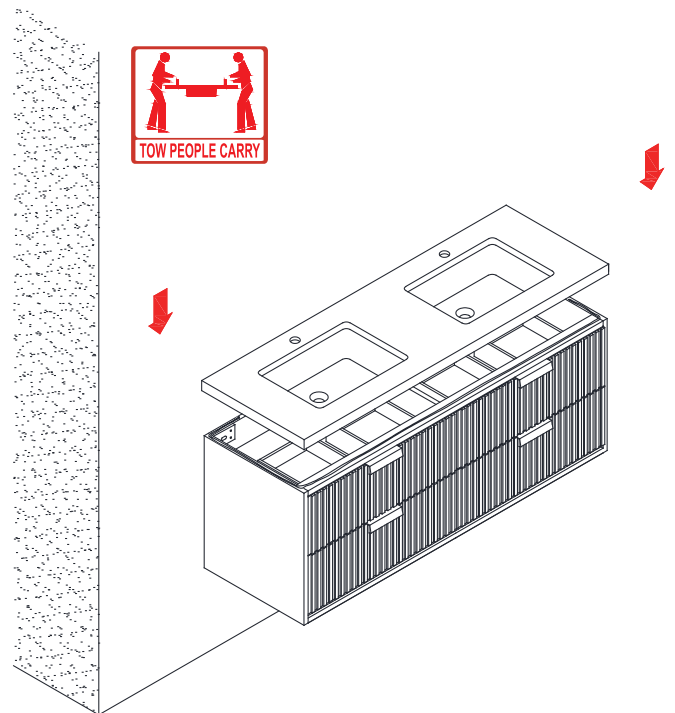


# INSTALLATION GUIDE

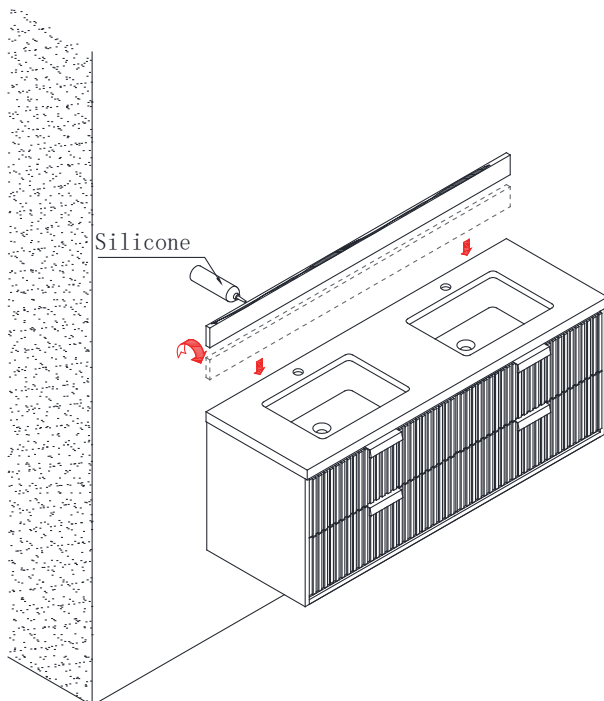
## Step 5



## Step 6



## Step 7



## Step 8

