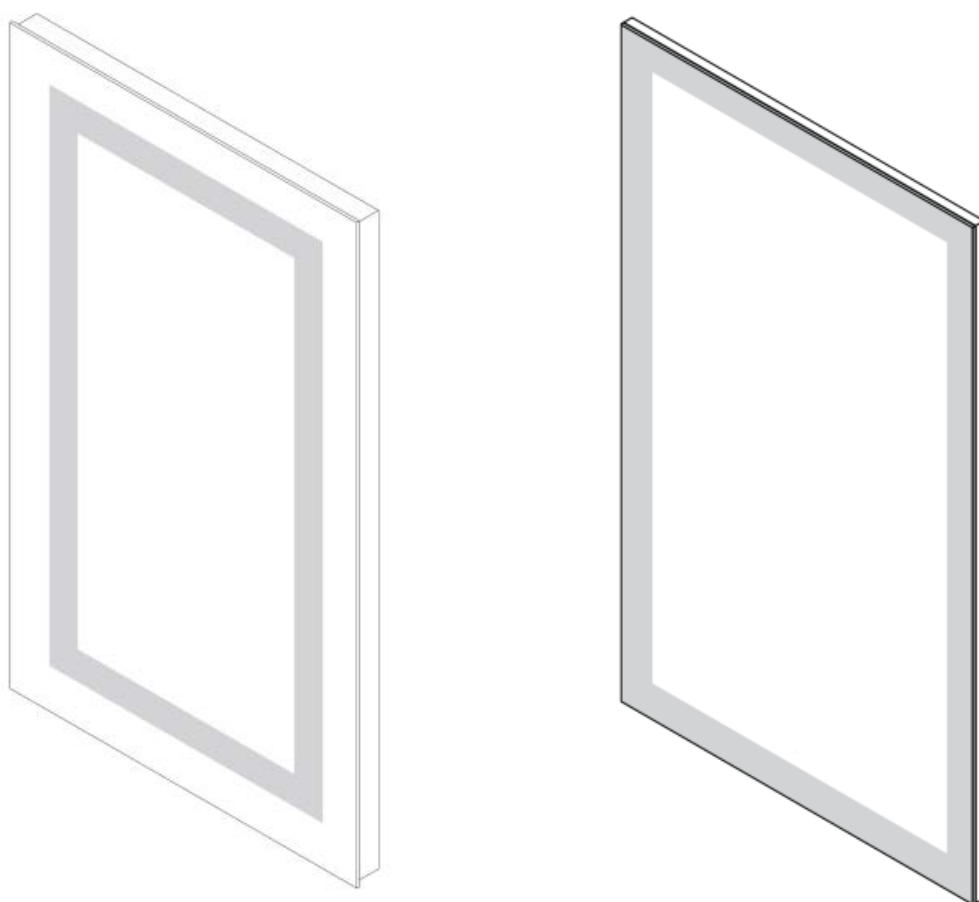


Installation and Operating Manual



WARNING AND SAFETY INSTRUCTIONS

Before assembling your LED Lighted Mirror fixture, please make sure that you carefully read through this instruction sheet, refer back to them during installation to ensure your product is fitted safely and correctly. Keep these instructions for future use.

WARNING Risk of Fire and Electric Shock

- All fittings must be installed in accordance with current IEE wiring regulations. If in doubt, consult a qualified electrician.
- Switch off the electrical supply at the main circuit board BEFORE installation and maintenance.
- Suitable for indoor use only. This product should be positioned well away from curtains and fabrics. Never cover the mirror.
- Regularly check the cord, the transformer and all other parts for damage. If any part is damaged the product should not be used.

INSTALLATION SAFETY

- Inspect the product immediately upon receipt for the transit damage or missing parts. Handle the product with care and protect against knocks to all sides and edges of the glass.
- Ensure there are no hidden pipes or cables in the wall before drilling.
- Wear suitable eye protection when drilling. Take care if drilling on tiled surfaces in case the drill slips.



CAUTION

The light source of this product is non-changeable light diodes (LED). Do not disassemble the product, as the light diodes can cause damage to the eyes.

NOTE: The important safeguards and instructions that appear in this manual are not meant to cover all possible conditions and situations that may occur. It must be understood that common sense, caution and care, are factors that can't be built into any product. These factors must be supplied by the person(s) caring for and operating the fixture. Do not install this fixture in hazardous locations.

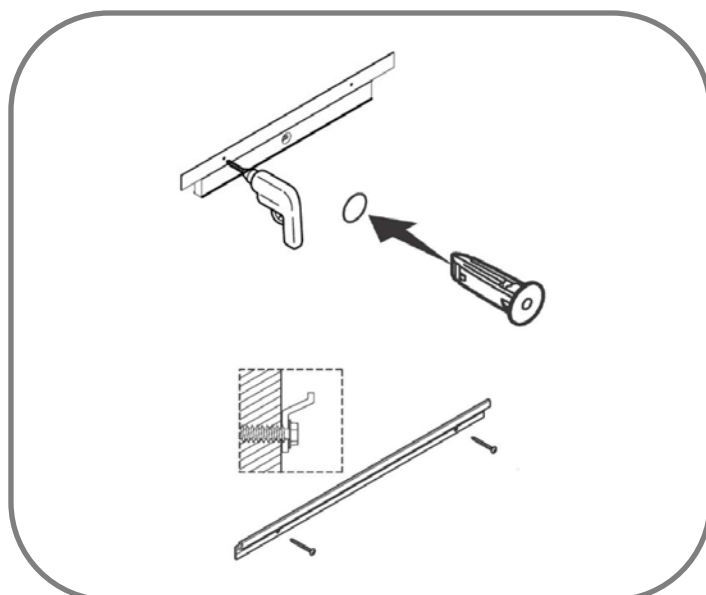
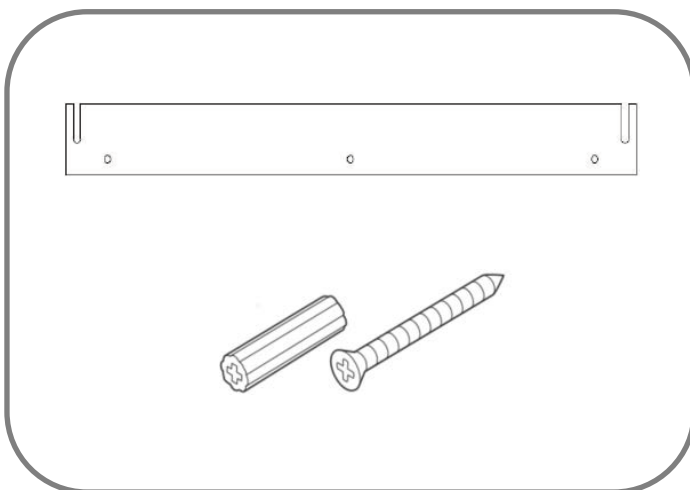
CHECK PRODUCT LIST AFTER OPENING THE PACKAGE

- LED Lighted Mirror --1pce
- Screw --2pcs
- Expansion Tube --2pcs
- Installation Manual --1pce
- Returning Guide --1pce
- Extended warranty form --1pce

TOOLS YOU MAY NEED

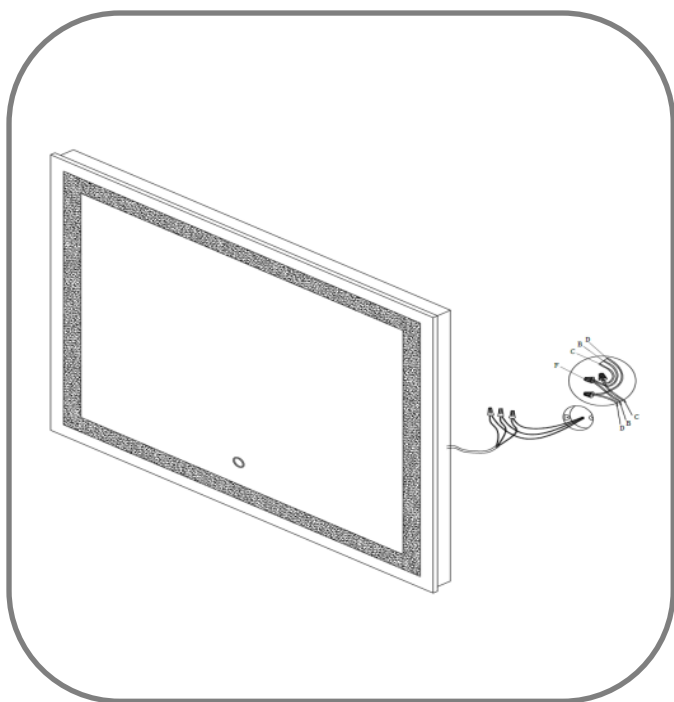


INSTALLATION MANUAL

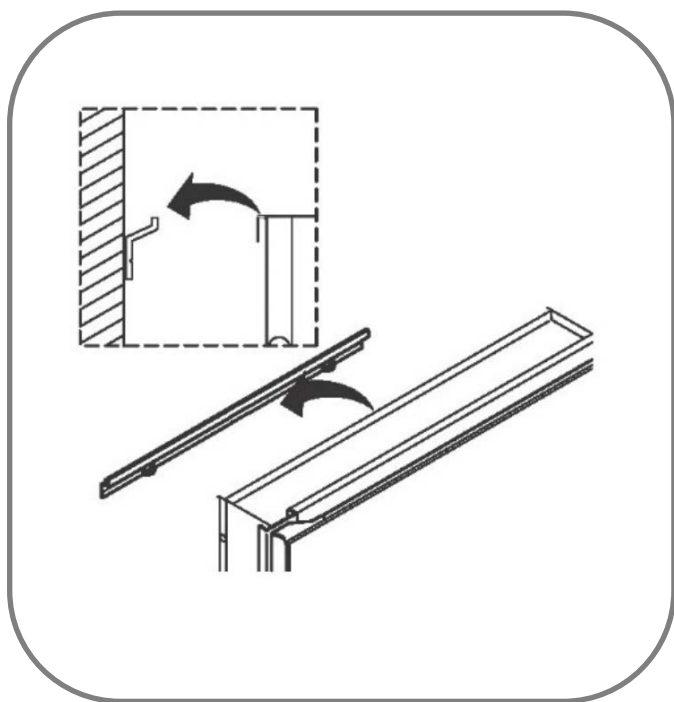


Step 1:

Use an I-Beam level to mount the included mounting bracket with 3 screws (Use anchor when it's installed on drywall, concrete or tile surface).

**Step 2:**

Make sure the circuit breaker for the power source of the mirror is off. Then connect the neutral (White), hot (black) and ground (copper wire or Green) wire between the mirror and the junction box.

**Step 3:**

Hang the mirror with desired placement by mirror Z-bar on to the mounting bracket.

OPERATION INSTRUCTION

ON/OFF Function



ON/OFF button

- Short press (< 1 second) the LED light switch button to turn on / off the LED lamp.

Color temperature Function



Press and hold on
for >1 second

- Long press (> 1 second) to adjust the color temperature. When the LED is on, long press the button to change the color temperature. The LED color temperature changes in loop from 3000K to 6000K, or from 6000K to 3000K on second press.
- To change the color temperature until meets your requirement.

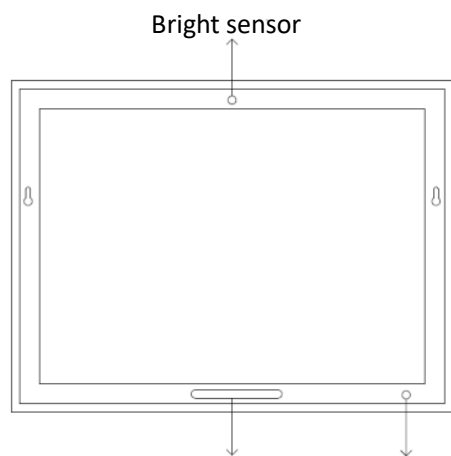
Anti-Fog /time adjustment Function



Defog switch button/time
adjustment button

- Short press (< 1 second) the button to activate defog function.
- Long press the button into the time adjustment mode .
 - Long press for three seconds until the hour digits flashing, then short press this button to adjust the hour digit (24-hour mechanism) by each hour/press.
 - Long press again for three seconds until the minute digits flashing, then short press this button to adjust the minute digits by each minute/ press.
 - After finishing the adjustment, long press for three seconds (or wait for five seconds without any operation) to exit the time adjustment mode.

Night Light (For mirror with night light function only)



- DO NOT cover the sensor on top of the mirror.
- Night light will be auto-on/off according to the brightness surrounding.
- Optional to stop night light function by tapping the ON/OFF switch at the bottom corner of the mirror.

AFTERCARE INSTRUCTIONS

Clean using a soft dry cloth only when turned off. Never use cleaning agents or abrasive materials. Do not allow moisture to come into contact with lamp.

THANK YOU FOR YOUR SUPPORT.

We wish you have wonderful experience in our product. If you have any other needs or queries, please feel free to contact us by email info@exbriteusa.com, and get replies within 48 business hours.