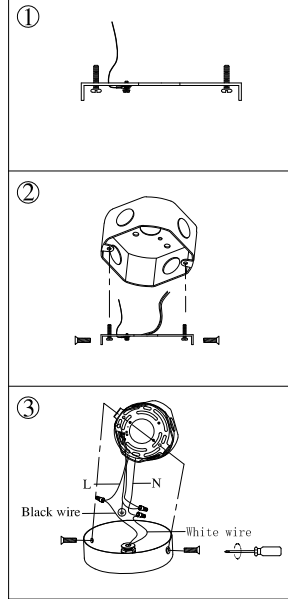
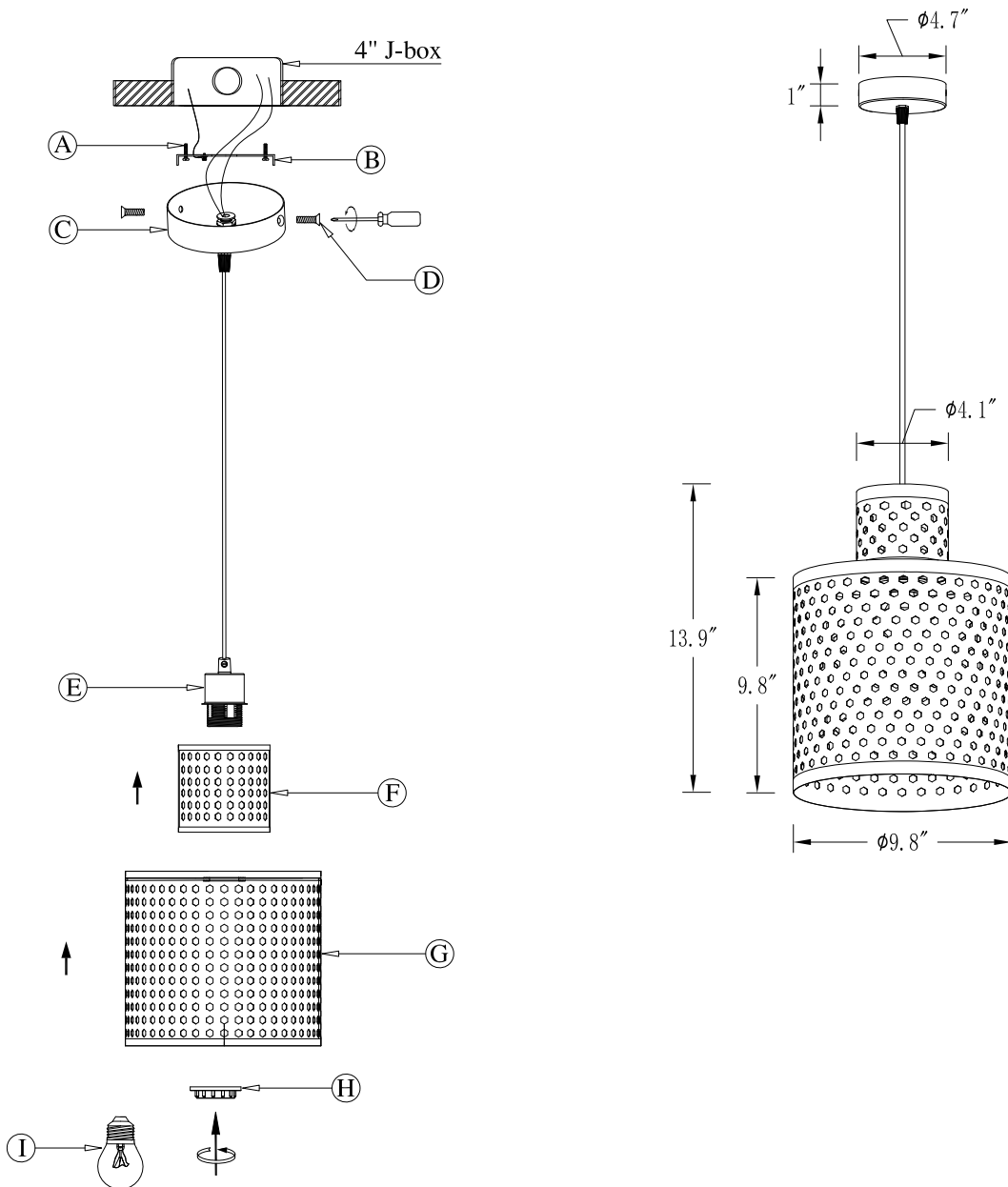


# DIAGRAM OF INSTALLATION STRUCTURE

SKU No. :CE1008608

Product Size: Ø9.8"\*H13.9"

Light Source: E26



- |                     |                      |                            |                |                            |
|---------------------|----------------------|----------------------------|----------------|----------------------------|
| (A) Mounting Screw  | (B) Mounting Bracket | (C) Canopy                 | (D) Flat Screw | (E) Lampholder Subassembly |
| (F) Upper Lampshade | (G) Lower Lampshade  | (H) Snap Ring (Lampholder) | (I) E26 Bulb   |                            |

## Installation instruction

1. Turn off the power
2. Dismantle mounting bracket subassembly as picture 1, install mounting bracket (B) to J-Box with mounting screws (A).
3. Connect the fixture to a suitable ground in accordance with local electrical codes.
4. Connect the White wire to the neutral power line wire with a wire nut.
5. Connect the Black wire to the hot power line wire with a wire nut.
6. Neatly place all wires and wire nut connections inside the canopy (C).
7. Install canopy (C) to ceiling with Flat Screws (D).
8. Put the Lampshade (F)(G) into the lampholder subassembly (E), then screw them together with the snap ring (H).
9. Screw E26 bulb (I) into the fixture.
10. Turn on the power.