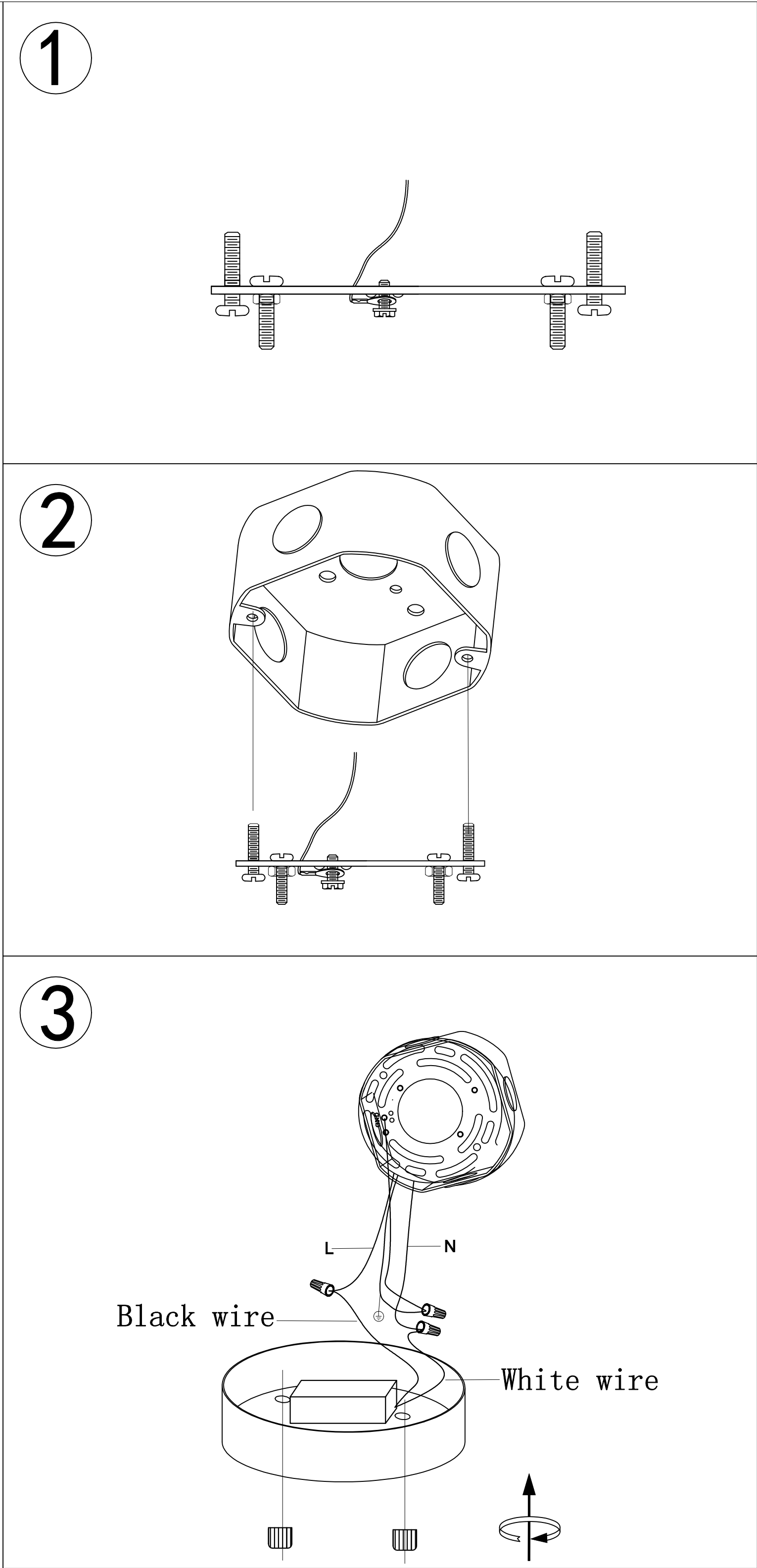
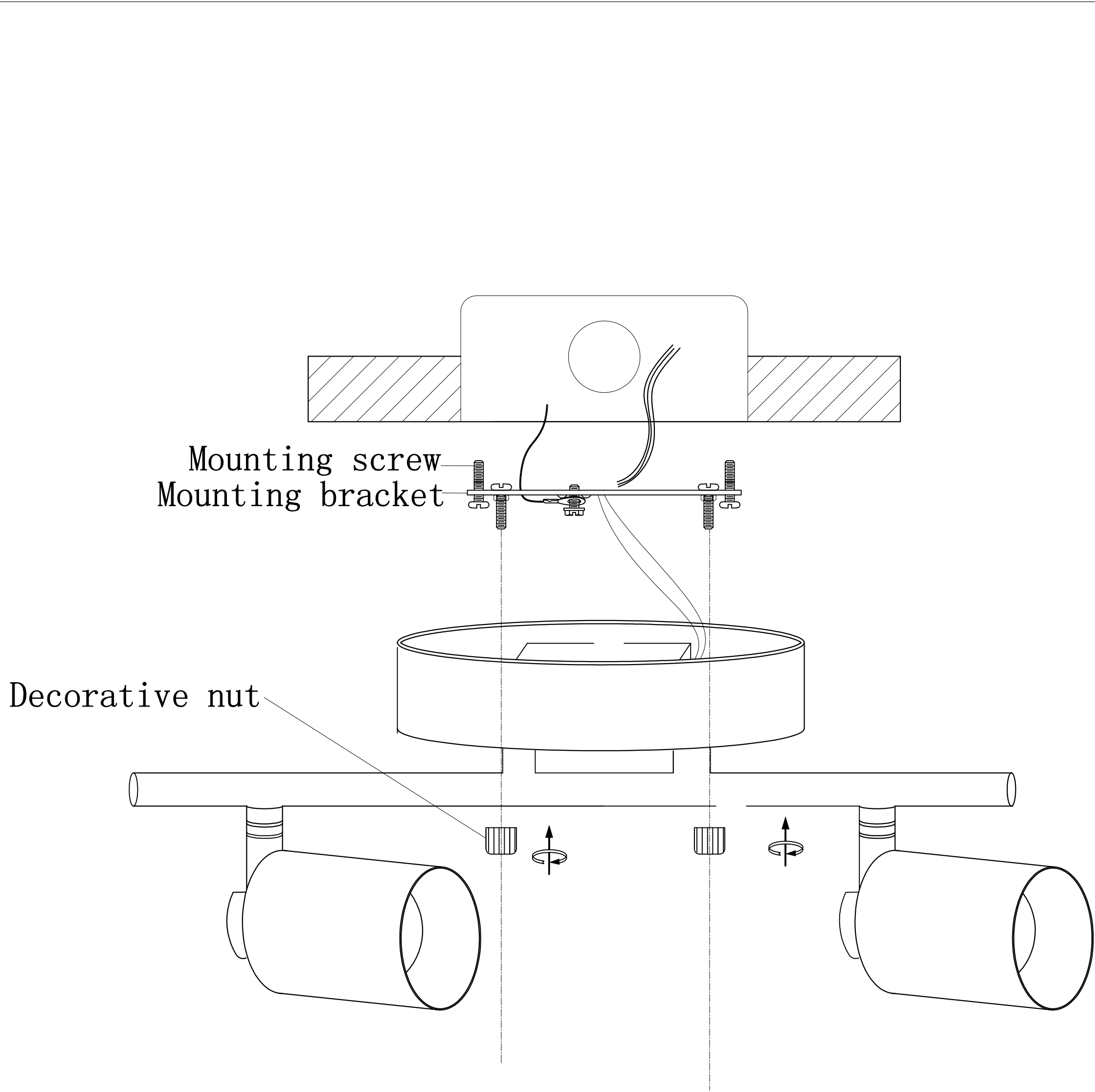
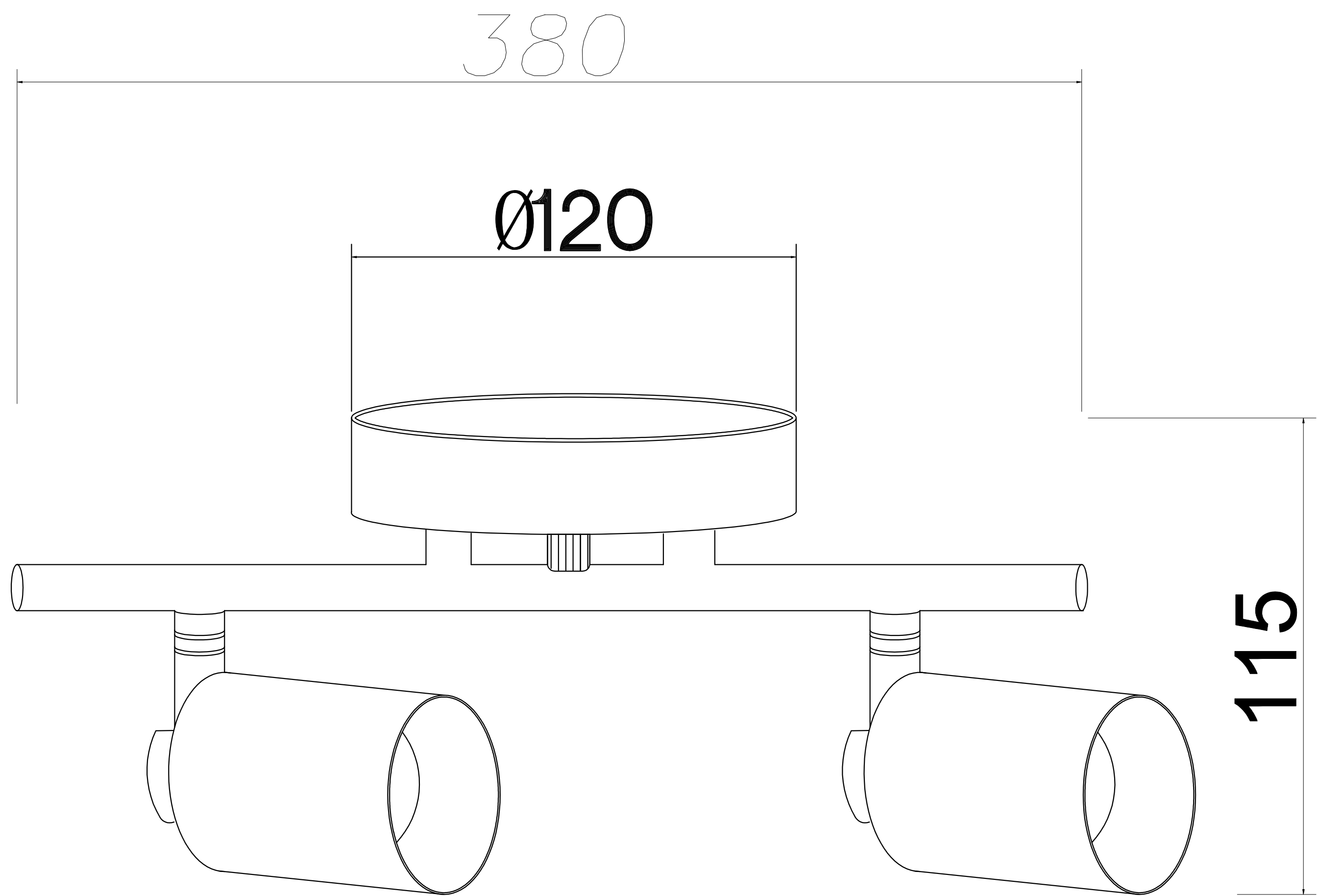


SKU	CE1008568/CE1008569/CE1008570
Driver NOVBO	Input:120VAC, 60HZ Output:36VDC, 350mA
Product Size	380x120x115mm
Product Weight	0.85Kg
Power	2*7W
Lumen Output	801lm per head
Color Temperature	3000K
CRI	≥80
Dimmer	Triac dimmable



## Installation instruction

1. Turn off the power
2. Dismantle mounting bracket subassembly as picture ①, install mounting bracket to J-Box with mounting screws
3. Connect the fixture to a suitable ground in accordance with local electrical codes
4. Connect the White wire to the neutral power line wire with a wire nut
5. Connect the Black wire to the hot power line wire with a wire nut
6. Neatly place all wires and wire nut connections inside the canopy
7. Install canopy to ceiling with decorative nuts
8. Turn on the power