



LOCATION		DATE
PREPARED BY		QUANTITY
COMMENTS		FIXTURE TYPE
CATALOG NUMBER		

## Avanti Vanity ATV Series

### Features

Contemporary wall mount vanity features a simple and clean design with metal end covers. Fixture can be vertically or horizontally mounted on a wall or on a ceiling. Closed top and bottom. For indoor use only.

### Construction

Back plate is die-formed of 22-gauge steel. Standard mounting holes and hardware are included. Power supply connections must be made inside a junction box (not included).

### Finish

Back plate is finished in lighting grade white baked gloss enamel paint and the end caps are plated in satin nickel or oil-rubbed bronze.

### Diffuser

LumaFuse™ laminated fabric/acrylic shade in Jute (JT) or Linen White (LW).  
\*Optional White Acrylic (WH) version available upon request.  
Closed top and bottom.

### Electrical

Input 120 VAC, 60 Hz. Compatible with TRIAC, 2-wire dimmable.

### LED

Integrated LED (DOB) modules capable of producing:  
27-1/2" - 26W, 2000 source lumens  
39-1/2" - 35W, 3000 source lumens  
51-1/2" - 49W, 4000 source lumens  
3000K (CCT), Rated for 50,000 hours, 90 CRI.

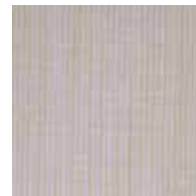
### Certification

All fixtures are cETLus listed for damp locations.  
ADA  
Title 24/JA8 Compliant

**Specifications and dimensions**  
subject to change without notice.



Oil-Rubbed Bronze/Jute



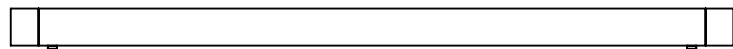
Jute (JT)



Linen White (LW)



\*White Acrylic (WH)



## Ordering Information:

Satin Nickel/Linen White	Oil-Rubbed Bronze/Jute	*Satin Nickel/White Acrylic	LED	Source Lumens	CCT	L	H	D
ATV240520L30D1SNLW	ATV240520L30D1RBJT	ATV240520L30D1SNWH	26W	2000	3000K	27-1/2"	5"	2"
ATV360530L30D1SNLW	ATV360530L30D1RBJT	ATV360530L30D1SNWH	35W	3000	3000K	39-1/2"	5"	2"
ATV480540L30D1SNLW	ATV480540L30D1RBJT	ATV480540L30D1SNWH	49W	4000	3000K	51-1/2"	5"	2"

\*Satin Nickel/White Acrylic available as special order -  
200 piece minimum order quantity.