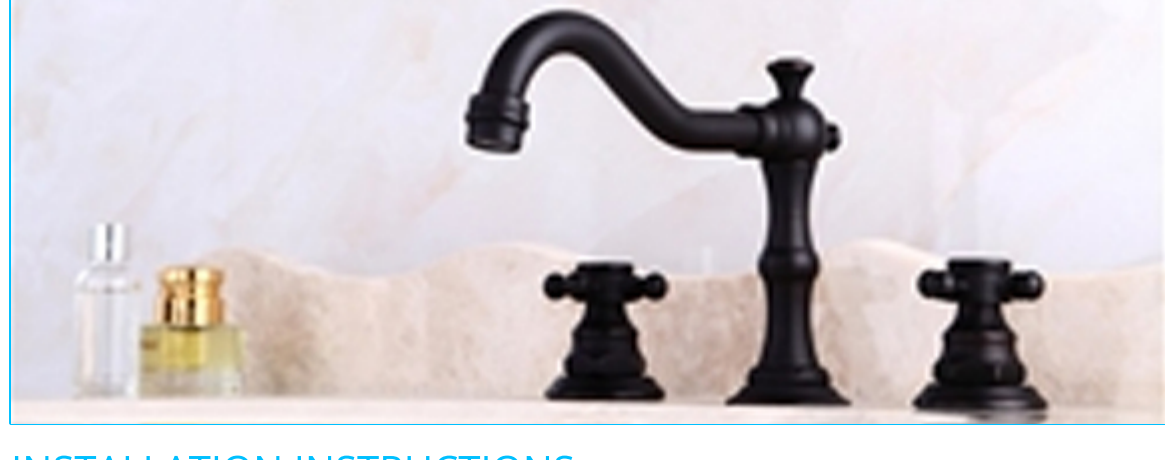
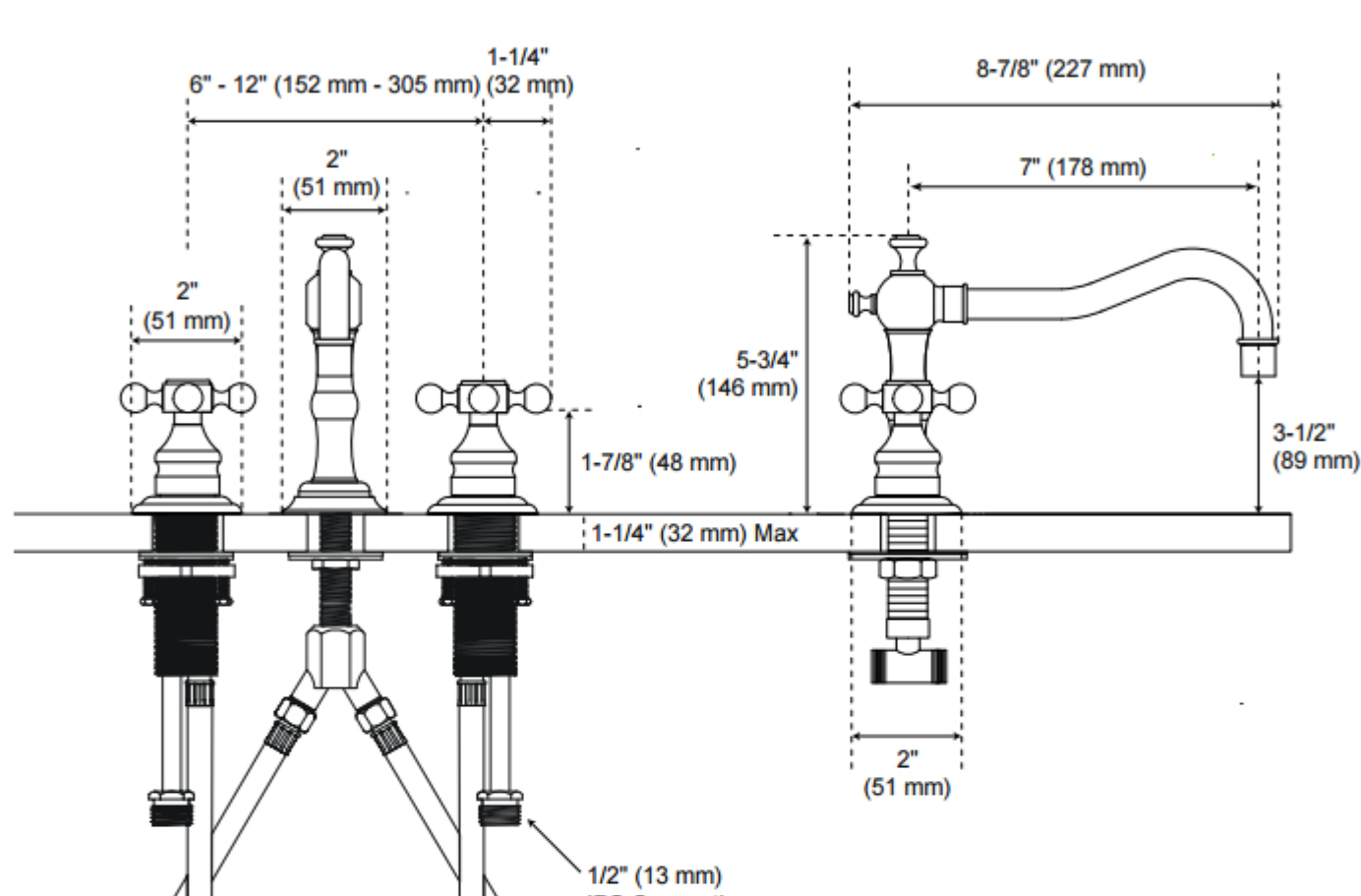


# Huaraz Deck Mounted Bathroom Sink Faucet

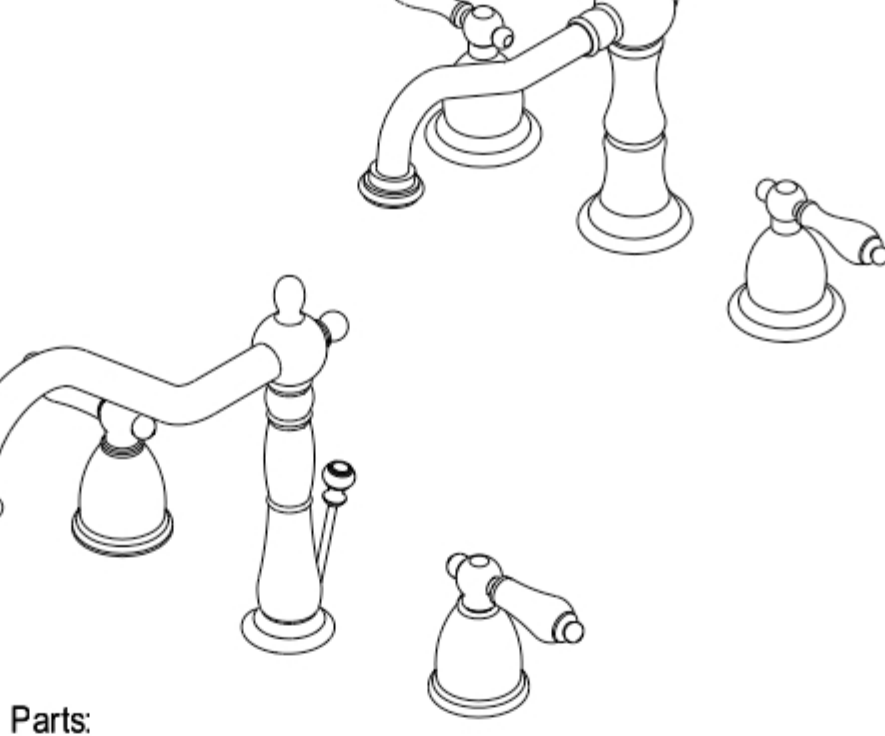
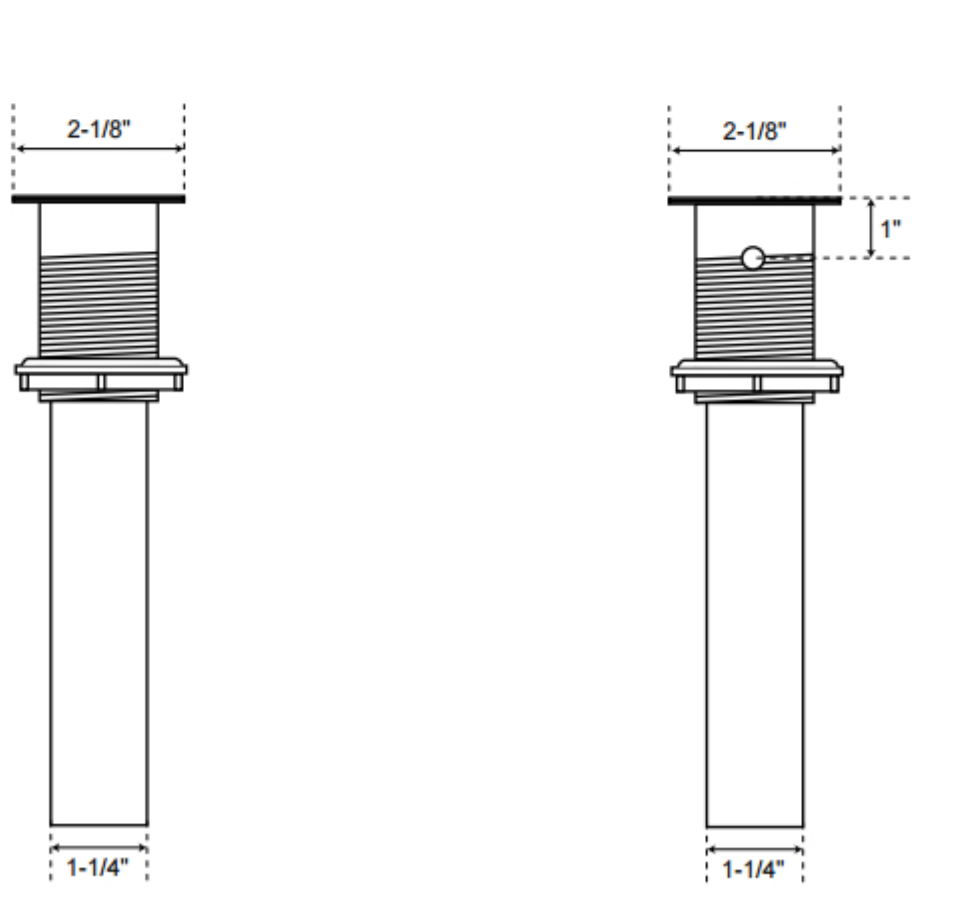


## INSTALLATION INSTRUCTIONS


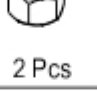
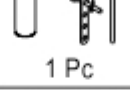


Without Overflow

With Overflow



### Parts:

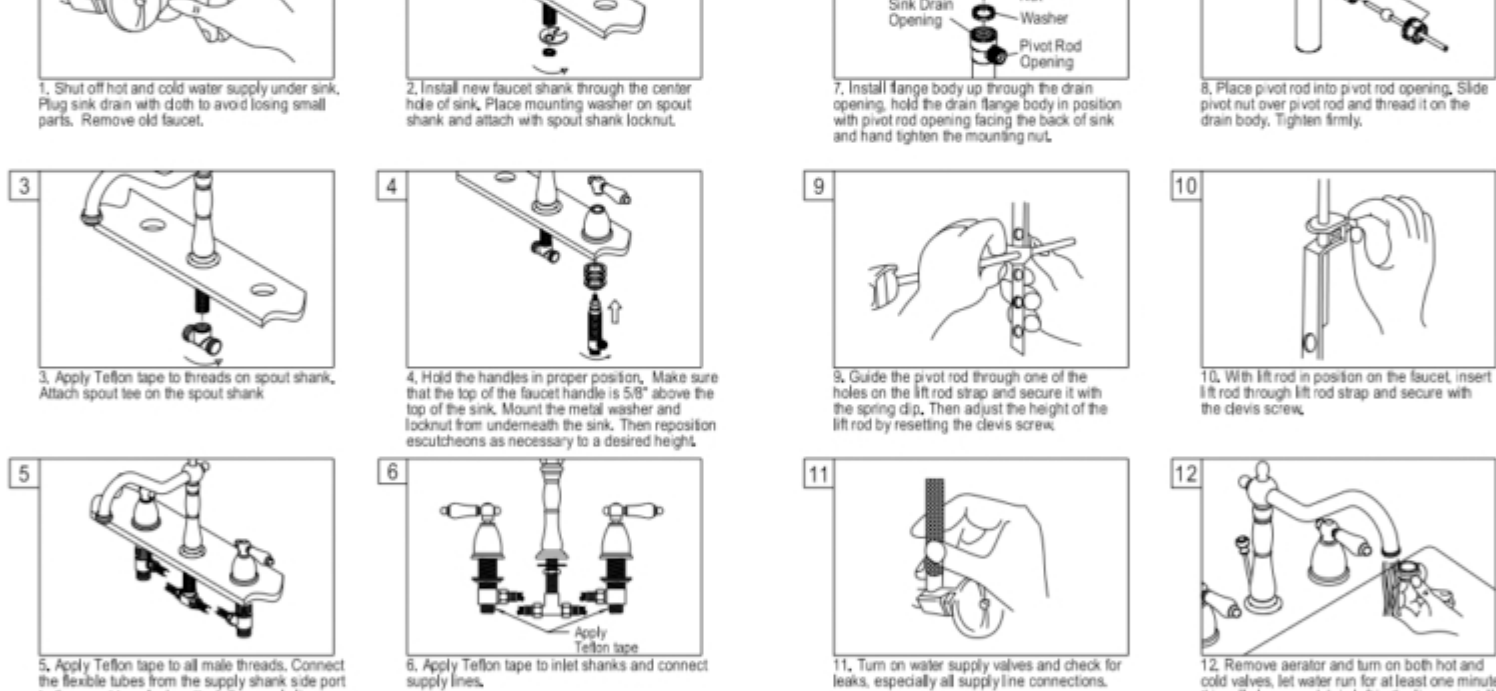
Washer & Lock Nut	Cone Washer & Coupling Nut	Pop-Up
		
2 Pcs	2 Pcs	1 Pc

### Need Tools:

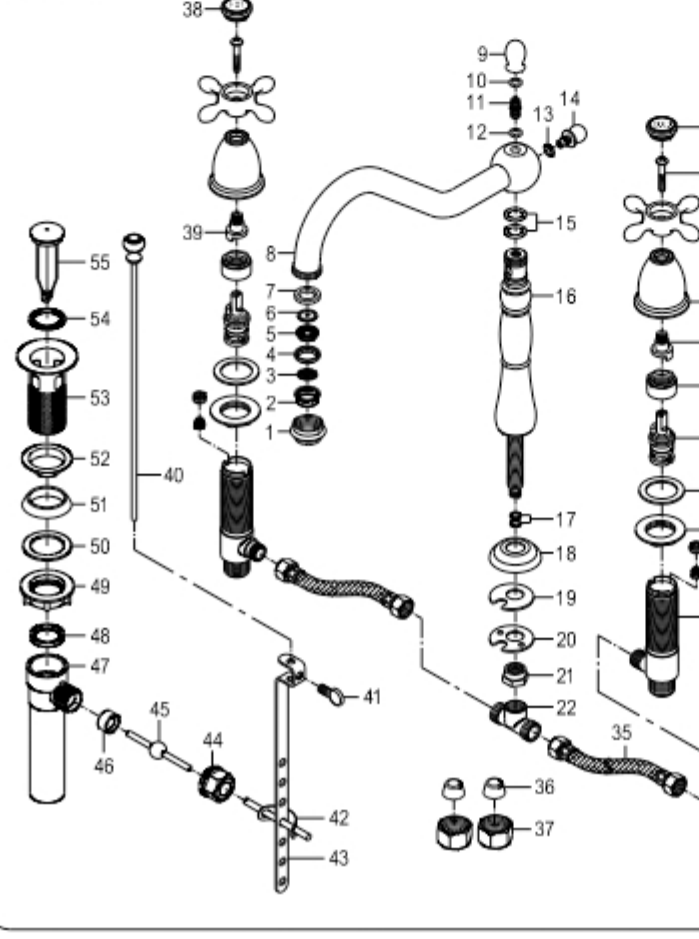


### BEFORE BEGINNING INSTALLATION

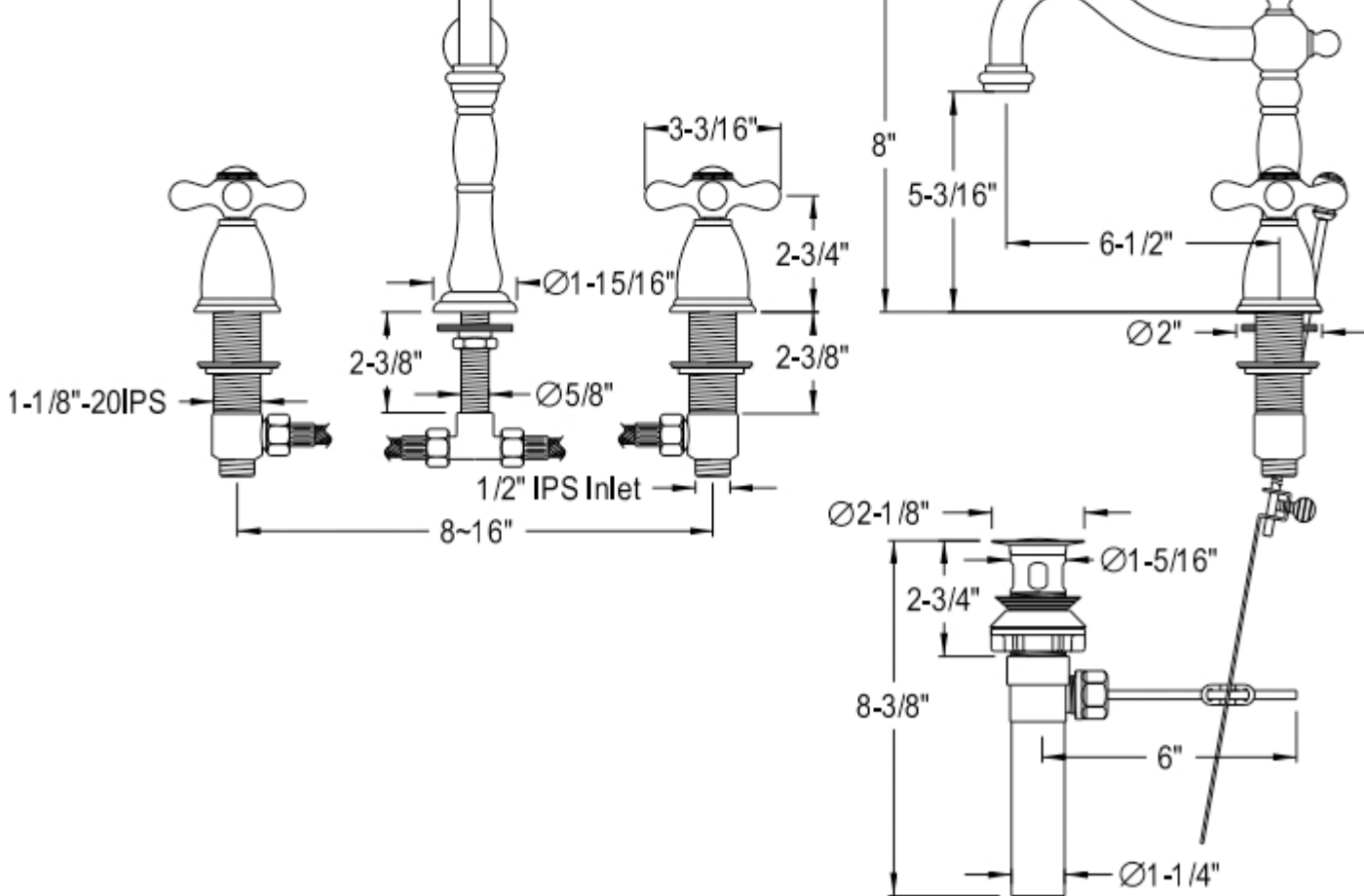
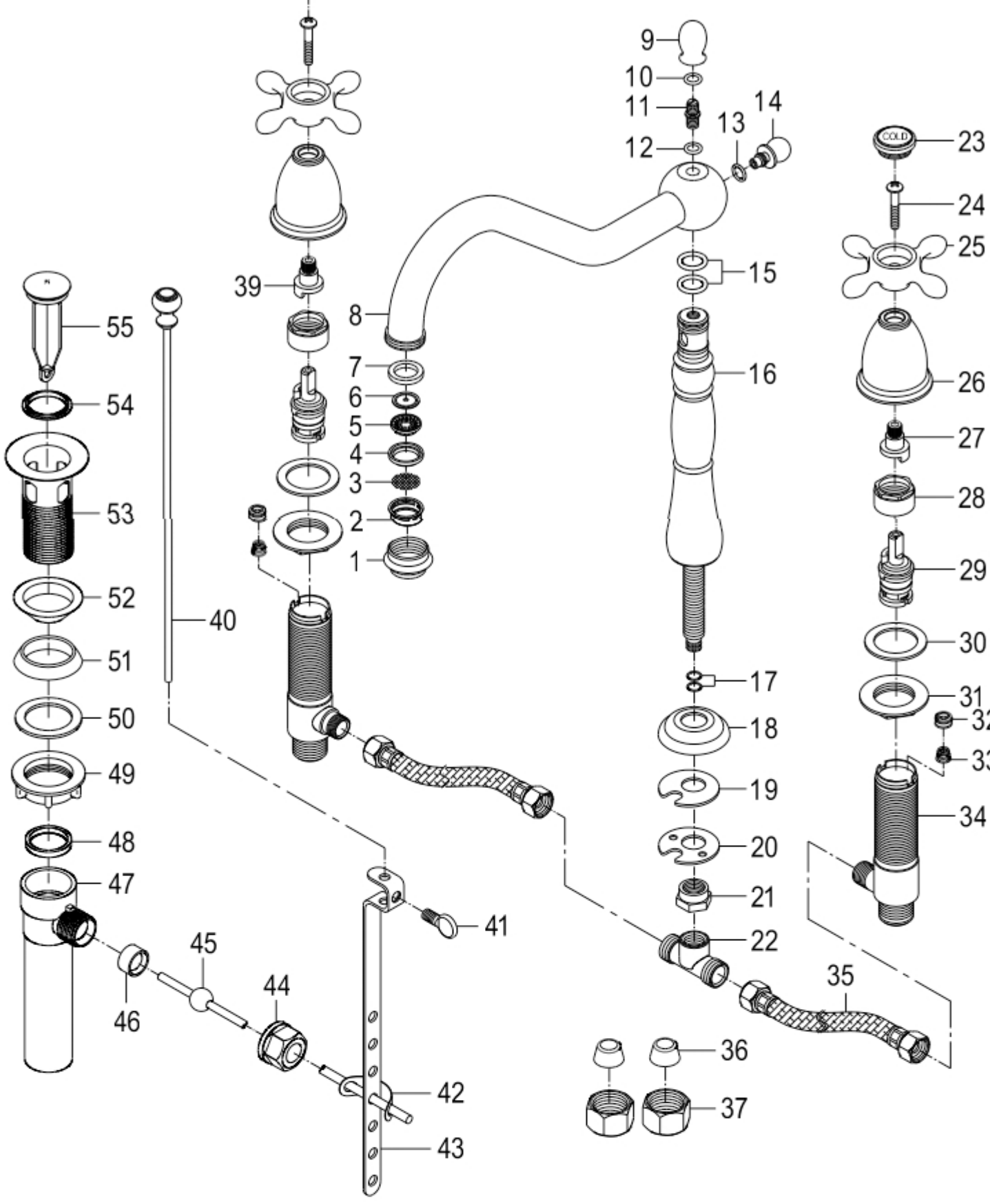
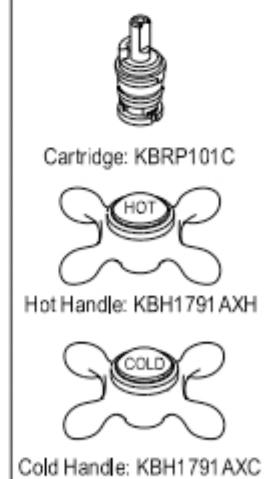
1. Flush plumbing lines to clear any debris.
2. Shut off both supply lines after flushing.



### Parts:



### Replacement Parts:



This General diagram and installation instructions are not intended for any specific model, but is presented as a general guideline for Installations!