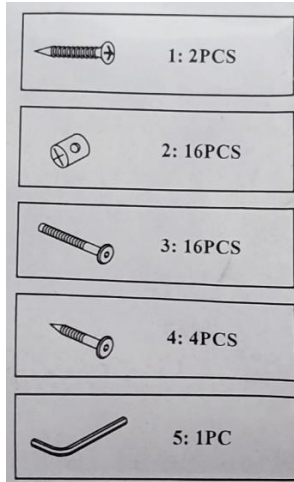


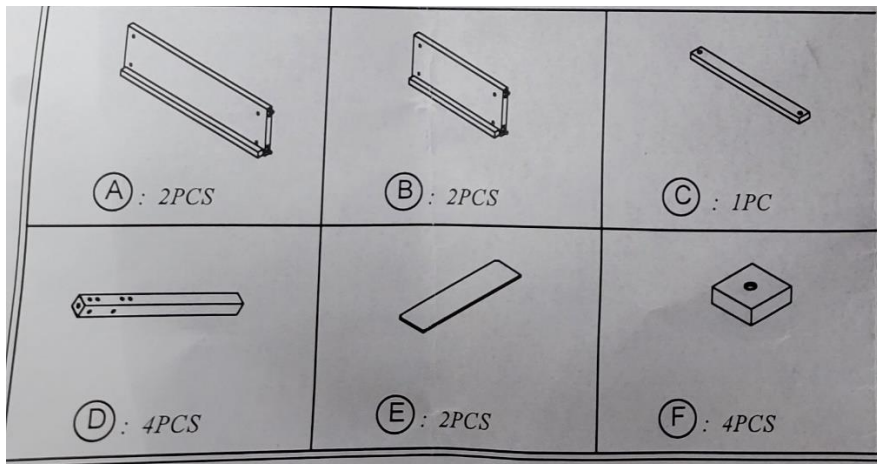
2849

Acacia Wood Raised Garden Planter Assembly Instructions

The planter comes with the following hardware:



Below are the parts and the description of each part



A: 2 pieces of long rectangular wood with a small lid attached to it. (This small lid is what will be holding the inside wood)

B: 2 pieces of short rectangular wood with a small lid attached to it. (This small lid is what will be holding the inside wood)

C: 1 piece of long wood (This piece is what will be going across the planter at the bottom)

D: 4 pieces of wooden stands

E: 2 pieces of flat rectangular wood with "L" cuts on the corners (These will be the inside of the planter)

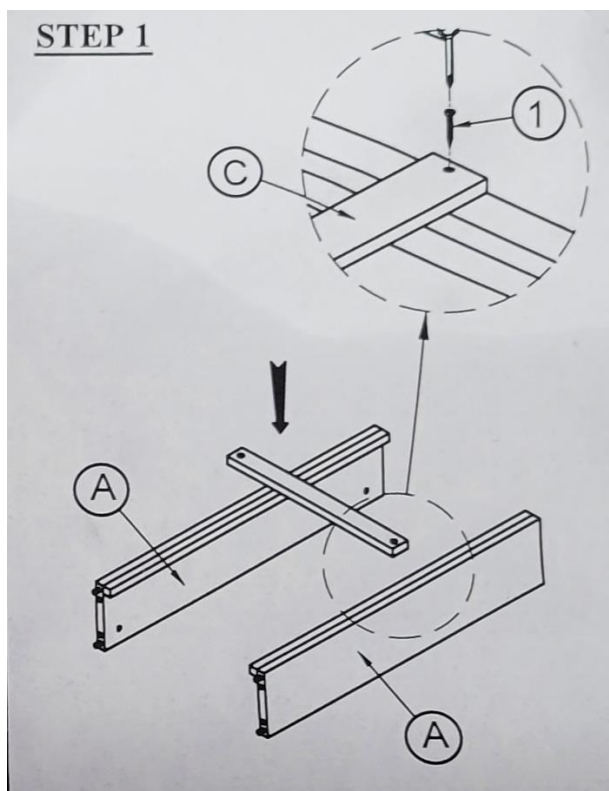
F: 4 pieces of square wooden parts (These will go at the top of the stands once planter is fully assembled)

STEP 1:

Place the two parts **A** pieces next to each other with the lid part of the wood facing up. (You will notice there will be 2 holes on the wood part of the lid)

Use part **C** to align the two pieces of wood together. Part **C** goes across the middle connecting the wood along with the holes each part already has. Use the screws (No. 1) shown on the hardware list to connect part **C** to parts **A**.

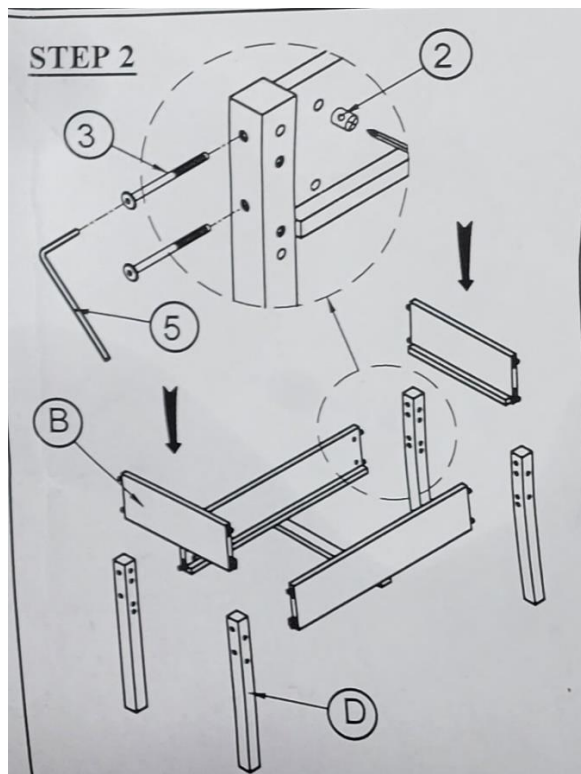
(Please note: a Phillips screwdriver will be needed for this step; Not included)



STEP 2:

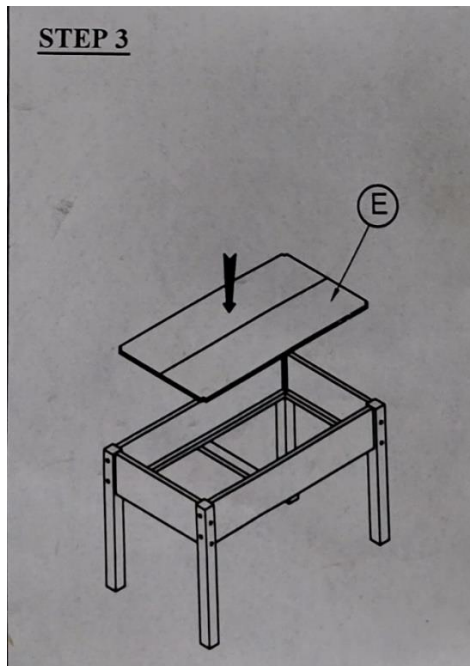
For this step, parts **B** and **D** will be needed along with No 2, 3 and 5 from the hardware list.

Insert part **B** in part **D**. (Note: part D has a whole at the top for screws. This part needs to be facing up) Align mounted parts with parts **A** and **C** already assembled. Insert No. 2 hardware inside the holes inside parts **A** and **C**. Insert No. 3 hardware in the wholes located on the side in part **D**. Using No. 5 hardware, tighten the screws of all the parts connected.



STEP 3:

Insert part **E** Inside planter. L cut corners will fit right through each corner.



STEP 4:

Align part **F** with parts **D**. Screw No. 4 hardware using No. 5 hardware.

