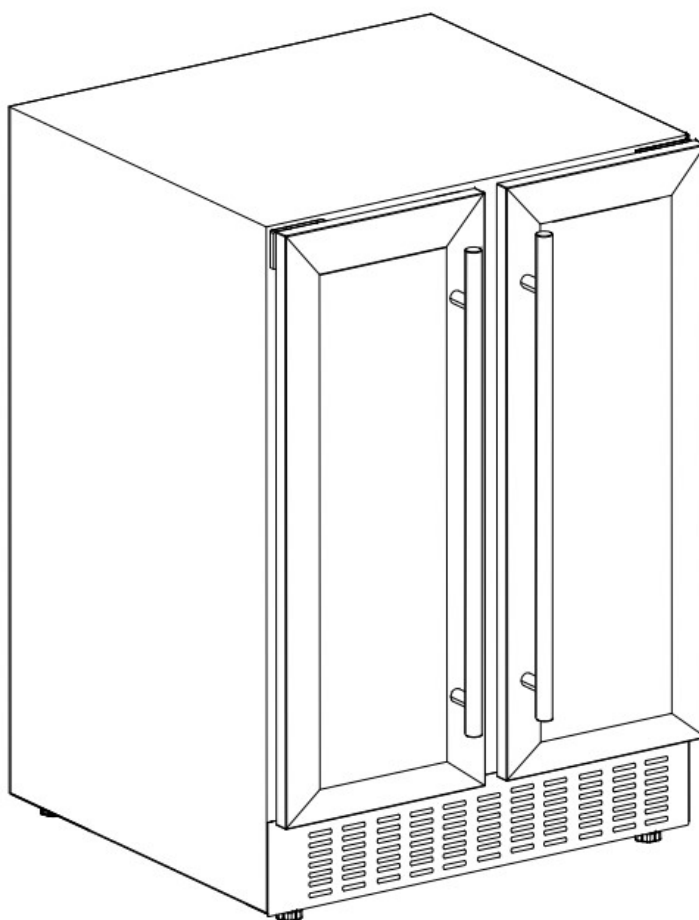




## **BEVERAGE CENTER**

**MODEL - WR 1956**



## **OWNER'S MANUAL**

---

**Read the instructions carefully and keep for future reference**

## Warranty

---

Equator Appliances undertakes to the consumer-owner to repair or, at our option, to replace any part of this product which proves to be defective in workmanship or material under normal personal, family or household use, in USA and Canada, for a period of one year from the date of original purchase. During this period, we will provide all labor and parts necessary to correct such defect, free of charge, if the appliance has been assembled and operated in accordance with the written instructions with the appliance.

### Exclusions

In no event shall Equator Appliances be liable for incidental or consequential damages or for damages resulting from external causes such as abuse, misuse, incorrect voltage or acts of God. This warranty does not cover service calls which do not involve defective workmanship or materials covered by this warranty. Accordingly, diagnosis and repair costs for a service call which does not involve defective workmanship or materials will be the responsibility of the consumer-owner.

**Specifically, the following is not covered under warranty and does not constitute warranty work:**

**Installation - e.g. Incorrect built-in spaces**

**Maintenance - e.g. Cleaning the appliance using solvents**

**Mishandling - e.g. Breakage of door handle or shelves**

Most work is covered. The defining factor is, has the machine malfunctioned (Equator Appliances is responsible) or has the customer omitted or done something to cause the appliance to malfunction (customer is responsible). Some States do not allow the exclusion or limitation of incidental or consequential damages, so the above limitation or exclusion may not apply to you.

### WARRANTY SERVICE

This warranty is given by:

#### **Equator Appliances**

10222 Georgibelle Drive, Suite 200, Houston, Texas 77043-5249

#### **For Customer Service:**

##### **Appliance Desk**

Phone/Text: 1-800-776-3538 Email: [service@ApplianceDesk.com](mailto:service@ApplianceDesk.com) Web: [www.ApplianceDesk.com](http://www.ApplianceDesk.com)

Business hours: 9:00 am to 5:00 pm weekdays

You can register your Warranty by either of the following methods:

1. Scan the QR Code
2. Register online at [ApplianceDesk.com/Warranty](http://ApplianceDesk.com/Warranty)



**WR 1956**

### GENERAL

Since it is a responsibility of the consumer-owner to establish the warranty period by verifying the original purchase date, Equator Appliances recommends that a receipt, delivery slip or some other appropriate payment record be kept for that purpose.

This warranty gives you specific legal rights, and you may also have other rights which vary from State to State.

## IMPORTANT SAFETY INSTRUCTIONS

<b>⚡WARNING⚡</b>	To reduce the risk of fire, electrical shock, or injury when using your appliance, follow these basic precautions.
<ul style="list-style-type: none"><li>• Read all instructions before using the appliance.</li><li>• DANGER or WARNING: Risk of child entrapment and suffocation. Junked or abandoned appliances are still dangerous even if they will “just sit in the garage a few days”.</li><li>• Before you throw away your old appliance: Take off the door. Leave the shelves in place so that children may not easily climb inside.</li><li>• Never allow children to operate, play with, or crawl inside the appliance.</li><li>• Never clean appliance parts with flammable fluids. The fumes can create a fire hazard or explosion.</li><li>• Do not store or use gasoline or any other flammable vapors and liquids in the vicinity of this or any other appliance. The fumes can create a fire hazard or explosion. Do not store explosive substances such as aerosol cans with a flammable propellant in this appliance.</li><li>• WARNING: Keep ventilation openings in the appliance enclosure or in the built-in structure, clear of obstructions.</li><li>• WARNING: Do not use mechanical devices or other means to accelerate the defrosting process.</li><li>• To avoid a hazard due to instability of the appliance, it must be installed according to the instructions.</li><li>• WARNING: Do not damage the refrigerant circuit.</li><li>• If the refrigerant of these appliances is R600a, flammable and explosive articles should not be put in or near the cabinet, to avoid fire or explosion.</li></ul>	

### WARNING

- The appliance must be positioned so that the plug is accessible.
- Do not move the appliance while loaded with cans or bottles.
- Install the appliance in an area where there is no contact with the compressor.
- This appliance is not intended for use by persons (including children) with reduced physical, sensory, or mental capabilities or lack of experience and knowledge, unless they have been given supervision or instruction concerning use of the appliance by a person responsible for their safety.
- If the electrical cord is damaged, it must be replaced by a qualified technician.
- Do not use an extension cord.
- To prevent damaging the door gasket, make sure to have the door all the way opened when pulling shelves out.

## INSTALLATION INSTRUCTIONS

### ➤ Before Use

- Remove the exterior and interior packing.
- Before connecting the appliance to the power source, let it stand upright for approximately 2 hours. This will reduce the possibility of a malfunction in the cooling system from handling during transportation.
- Clean the interior surface with lukewarm water using a soft cloth.
- This appliance is intended for household use.

### ➤ Installation

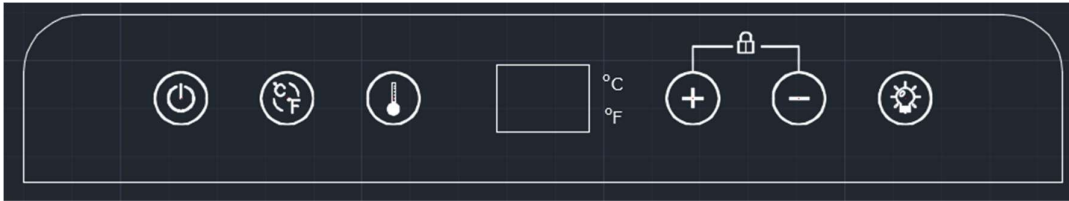
- This appliance is designed to be freestanding or built-in. (Refer to the sticker at the back of this appliance).
- **This appliance is intended to be used exclusively for the storage of wine or beverages.**
- Place the appliance on a floor that is strong enough to support it when it is fully loaded. To level the appliance, adjust the front leveling feet at the bottom.
- Be careful not to damage the appliance during transportation.
- Install the appliance away from direct sunlight and sources of heat (stove, heater, radiator, etc.).
- Do not install the appliance in moist areas or where it can be exposed to cold temperatures.
- Plug the appliance into a dedicated, properly installed-grounded wall outlet. Do not under any circumstances cut or remove the third (ground) prong from the power cord.

### ➤ General Use

- Store wine in sealed bottles.
- Do not overload the cabinet.
- Do not open the door unless necessary.
- Do not cover shelves with aluminum foil or any other shelf material which may prevent air circulation.

## OPERATION

### ➤ Control Panel



- Power button: After the unit is plugged in, press for 3 seconds to turn the appliance on or off.
- °C/°F button: Press to change the temperature display between Celsius and Fahrenheit.
- Temperature Setting button: Press to adjust the temperature. When pressed for the first time, the display flashes and shows the existing set temperature. After 5 seconds it shows the measured interior temperature. Press to increase the temperature and press to decrease the temperature.
- Display window: LED display shows the set temperature or actual interior temperature.
- Light button: Press to turn light on or off. When the door is open, the light will be switched on automatically.
- Key lock function: 3 minutes after setting the temperature, the settings will be locked automatically. Press and at the same time for 3 seconds to unlock.

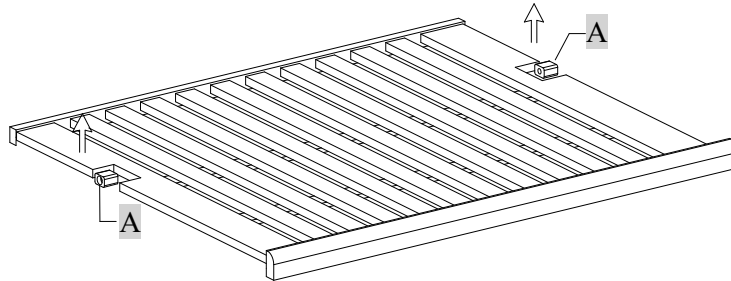
Note: The temperature can be adjusted from 41°F (5°C) to 53.6°F (12°C).

### **Attention:**

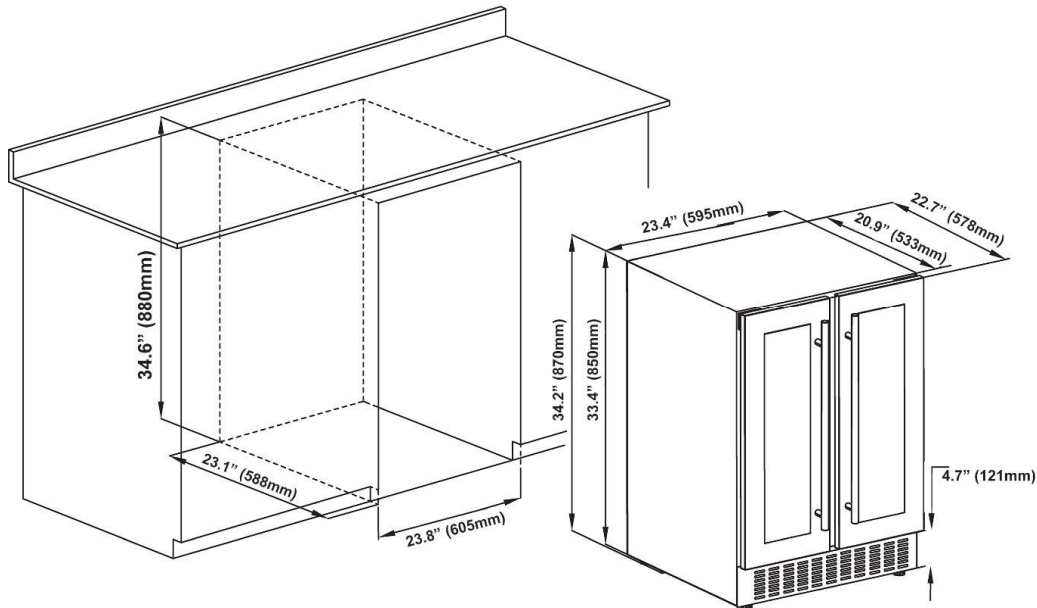
**If the appliance is unplugged, has lost power, or been turned off, please wait 3 to 5 minutes before turning the power on.**

## ➤ Shelves

- To prevent damaging the door gasket, make sure to open the door all the way when pulling shelves out.
- For easy access to bottles in the cabinet, pull the shelves approximately 1/3 out. This unit was designed with a notch on each side of the shelf tracks to prevent bottles from falling.
- To remove a shelf, move the shelf towards the gap on both sides and align with shelf support A. Then lift the shelf upwards and pull out from the cabinet once the shelf support is disengaged from the gap.



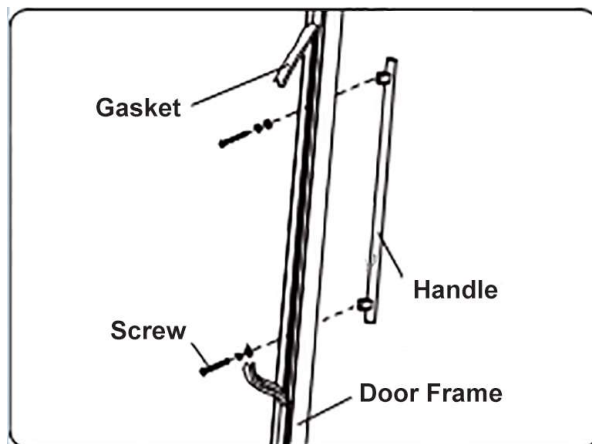
## Installation Specifications for Built-in



## Handle Installation

Install the Door Handle:

- Pull aside the gasket at the inner side of the door to expose the two screw holes.
- Install the handle tightly with the screws provided.
- Restore the gasket to cover the screws.



## Technical Specifications

Model	WR 1956
Capacity	4 cu. ft.
Storage Capacity	19 Bottles + 56 Cans
Electrical	110V 60Hz
Refrigerant	R600a
Temperature Range – Left Zone	41° F – 68° F
Temperature Range – Right Zone	36° F – 50° F
Weight (Net / Gross)	99 / 131 lbs
Product Dimensions (HxWxD)	34 x 23.5 x 22.6 (inch)
Packaging Dimensions (HxWxD)	38.6 x 26.7 x 26.7 (inch)

### **Door Lock**

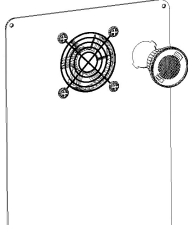
The Beverage Center includes a key to lock the cabinet.

Insert the key into the lock and turn it counter-clockwise to unlock and clockwise to lock the door. Please keep the key in a safe place.

### **CHARCOAL FILTRATION SYSTEM**

In order to preserve the quality and taste of your fine wines, they must be stored at the ideal temperature and ambient conditions. Your appliance is equipped with an active charcoal filtration system to ensure air purity, cooling efficiency, and to maintain an odor free cabinet for the storage of your fine wines. The filter assembly is located at the rear panel inside the unit. The filter should be changed every 12 months.

To replace the filter:

1	Remove the bottles of wine stored on the two (2) shelves in front of the filter.	 <p>Turn left to remove filter.</p>
2	Remove the shelves and set aside to be replaced once you have changed the filter.	
3	Hold the filter and turn it 45 degrees counter-clockwise, and then pull it out.	
4	Remove the existing filter and replace with a new one.	
5	Put the new filter into the hole and then turn the filter 45 degrees clockwise.	

## **CARE & MAINTENANCE**

### ➤ **Cleaning**

Turn off the power, unplug the appliance, and remove all items including shelves and rack. Using a damp cloth, wipe the outside and inside surfaces and shelves with warm water and mild solution. Dry with a clean, soft cloth.

### ➤ **Vacation**

Short vacations: Leave the appliance operating during vacations of less than three weeks. If the appliance will not be used for several months, remove all items and turn off the appliance. Clean and dry the interior thoroughly. To prevent odor and mold growth, leave the door open slightly, blocking it open if necessary.

### ➤ **Moving**

Remove all items.  
Secure shelves using tape and/or foam material.  
Turn the adjustable feet up to the base to avoid damage.  
Tape the doors shut.  
Be sure the appliance stays secure in the upright position during transportation. Also protect the outside of the appliance with a blanket or similar items.



## TROUBLESHOOTING

Many common problems can be easily solved, saving you the cost of a possible service call. Please see the Troubleshooting Guide below to solve problems before calling for service.

Problem	Possible Cause
Appliance does not operate	No plugged in. The appliance is turned off. The circuit breaker tripped or a blown fuse.
Not cold enough	Check the temperature control setting. External environment may require a higher setting. The door is opened too often. The door is not closed completely. The door gasket does not seal properly.
Turns on and off frequently	The room temperature is hotter than normal. Overload of the cabinet. The door is opened too often. The door is not closed completely. The temperature is not set correctly. The door gasket does not seal properly.
The light does not work	Not plugged in. The circuit breaker is tripped or fuse has blown. The bulb has burned out. The light button is "OFF"
Vibrations	The unit is not placed on a level floor.
Too much noise	The rattling noise may come from the flow of refrigerant, which is normal. As each cycle ends, you may hear gurgling. Contraction and expansion of the inside walls may cause popping and crackling noises. The unit is not level.
The door will not close properly	The unit is not level. The door was reversed and not properly installed. The gasket is dirty. The shelves are out of position.

### **Safe Disposal**

Before you throw away your old appliance: Take off the door from the Beverage Center. Leave the shelves in place so that children may not easily climb inside.

Please dispose of the appliance in accordance with local regulations.