



OLYMPIA FAUCETS, INC.

Interchange City Distribution Center #20
1277 Heil Quaker Boulevard
La Vergne, TN 37086
(888) 772-7701
www.olympiafaucets.com

Model Number: L-7470, L-7472 (CP, PVD BN, ORB)

Warnings and Notes:

Check with local plumbing code requirements before installation.
This product should be installed by a local listed plumber.
Do not use plumbers putty on threads.

Tools:



Adjustable Wrench



Plumbers Putty



Sealant Tape

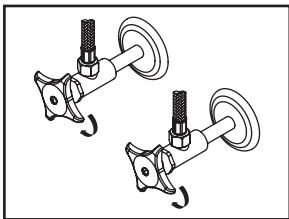


Rags

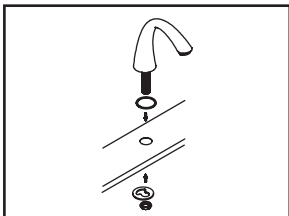


Installation Steps:

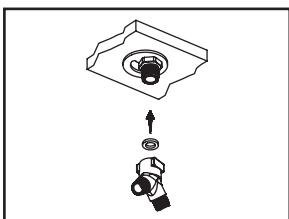
Two Handle Lavatory Widespread Faucet



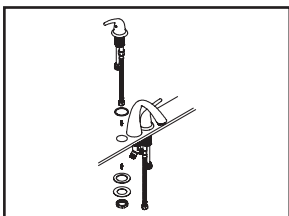
(1) Shut off water supplies. Remove old faucet. Clean mounting surface in preparation for new faucet.



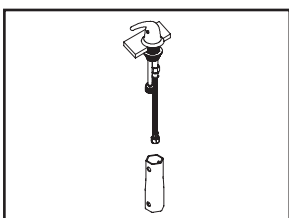
(2) Ensure there is a washer under the spout flange. Place the spout in position on the sink. From under the sink slide mounting bracket through spout shank. Thread nut onto spout shank properly and tighten nut



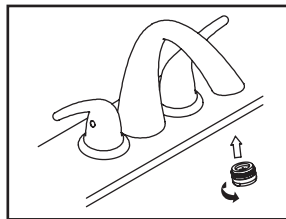
(3) Thread "Y" connector to the spout shank. Ensure there is a washer in the "Y" connector. Do not overtighten.



(4) Thread valve flange to valve. Install Cold and hot handle to the valve with the help of 3/32 Allen wrench. Place hot and cold side valve in position on the sink. Ensure handles turns in correct direction.

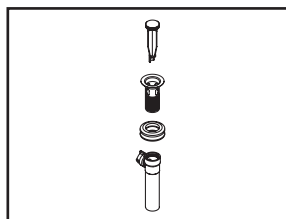


(5) From under the sink place washers and thread locknut with the help of 1-11/32 size socket. Connect outlet hose to Y connector. Connect inlet tube to water supply.

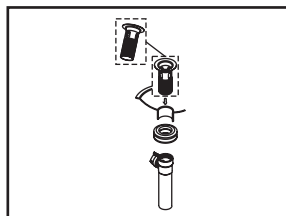


(6) Turn on water supplies. Check for any minor joint leaks. Remove aerator from spout by turning counterclockwise. Turn on both side handles. Flush and allow water to run at full flow at least one minute. Turn off both side handles. Replace aerator

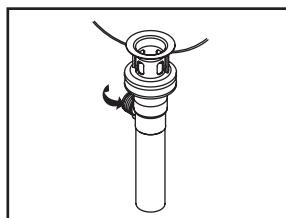
Pop-up Drain Installation:



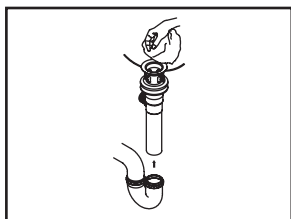
(1) Remove pop-up flange from body



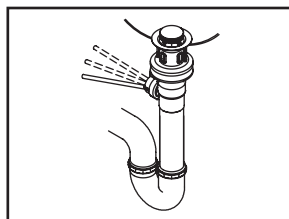
(2) Place a ring of putty on the bottom of flange.



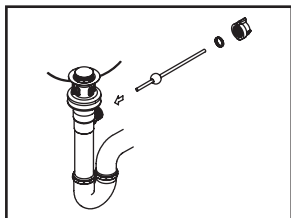
(3) Insert pop-up flange through drain hole and attach flange to body. Ensure the pop-up outlet faces towards the sink. Do not overtighten.



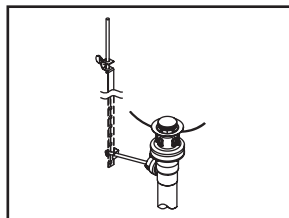
(4) Remove the excess putty. Connect the trap (check manufacturer's instructions for installation).



(6) Push pivot rod down, insert drain plug carefully. Test to ensure drain plug works properly.



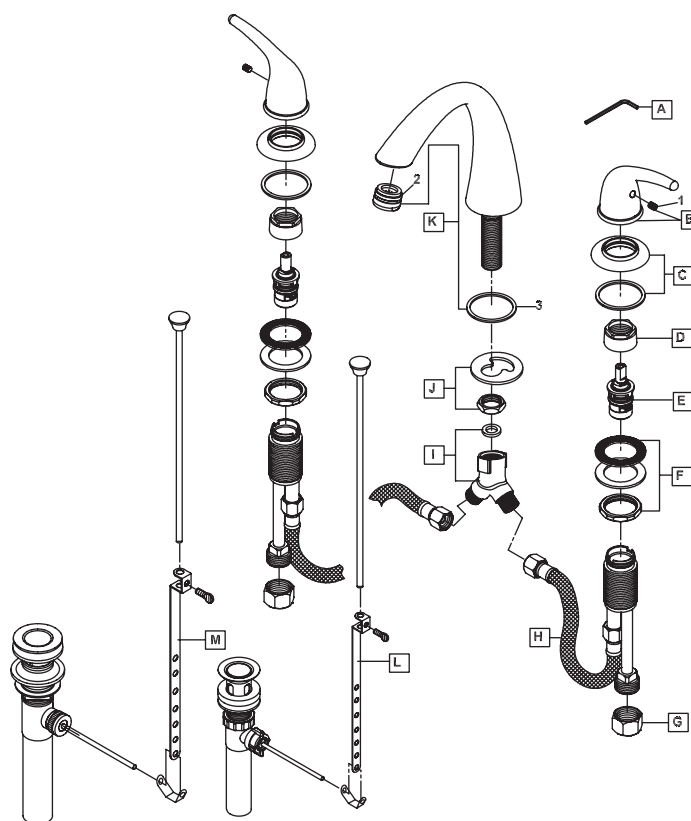
(5) Remove pivot rod nut from pop-up body, ensure the washers is in place, insert pivot rod, tighten pivot rod nut back to pop-up body.



(7) Connect lift rod strap to pivot rod by using clip. Tighten the thumbscrew to connect lift rod strap to pop-up lift rod.

Exploded Drawing:

* Note: Please specify finish/color when ordering.



	ITEM #	DESCRIPTION
A	OP-490011	3/32" Allen Wrench
B	OP-190015C,H*	Lever Handle-Cold, Hot
C	OP-430027*	Escutcheon & Gasket
D	OP-490006	Bonnet Nut
E	OP-330002C,H	Ceramic Disc Cartridge-Cold,Hot
F	OP-590002	Valve Mounting Kit
G	OP-590001	Supply Nut
H	OP-490008	Flex Connector Hose
I	OP-490009	"Y" Connector & Washer
J	OP-430001	Spout Mounting Kit
K	OP-230005*	'J' Style Spout
L	OP-630004*	50/50 Pop-Up Drain Assembly (For L-7470)
M	OP-630002*	Brass Pop-Up Drain Assembly (For L-7472)
1	OP-490029	3/32" Allen Screw
2	OP-490010*	1.5 GPM Aerator
3	OP-430028	Washer

OLYMPIA

For more care information or trouble shooting inquiries about your Olympia product, Please call:

OLYMPIA FAUCETS, INC. (888) 772-7701

8AM - 8PM EST (5AM to 5PM PST)

www.olympiafaucets.com