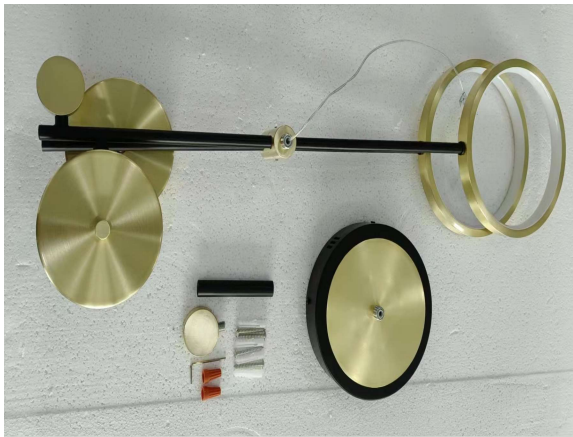


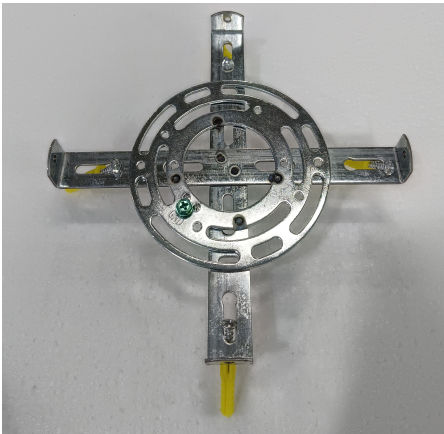
Installation Guide

Picture 1



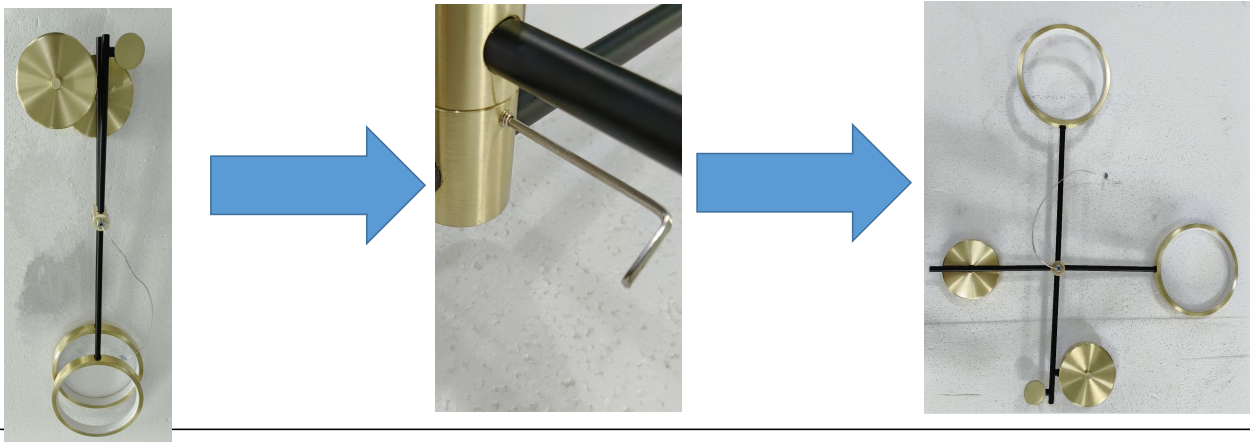
Parts List: as the picture shows.

Picture 2



Step 1: Unscrew the inner panel of the chassis and fix it to the wall.

Picture 3



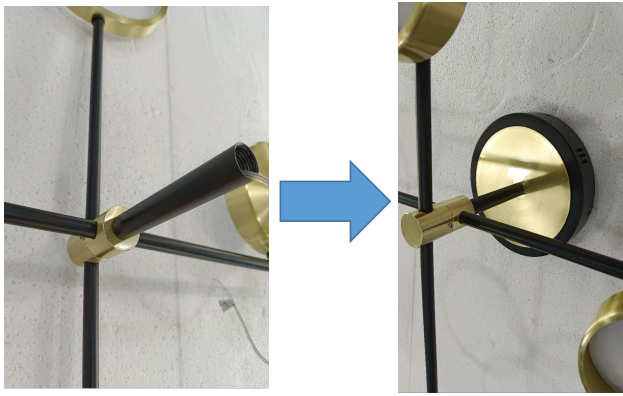
Step 2: Unscrew the screw according to the picture to open the lamp body and Retighten the screws to secure.

Picture 4



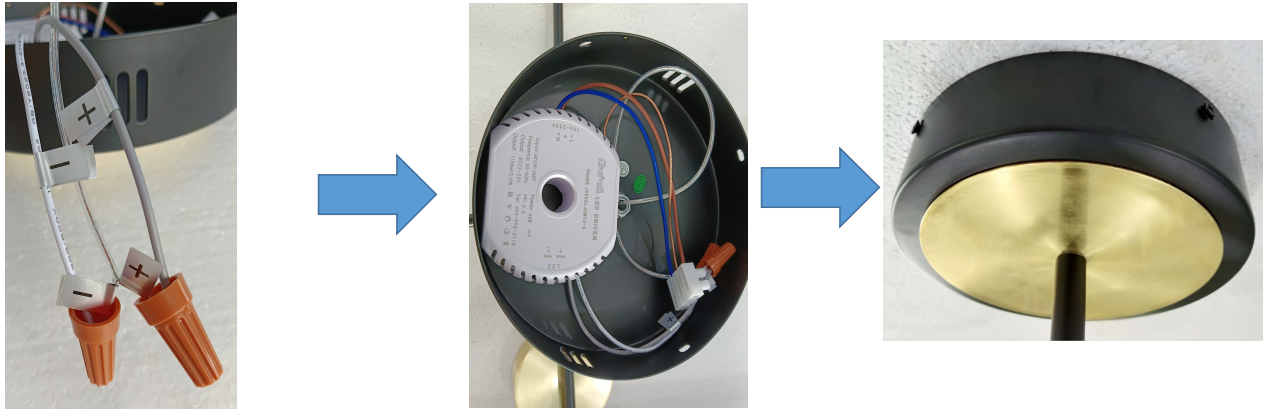
Step 3: Screw it according to the picture.

Picture 5



Step 4: Connect the light pole chassis according to the diagram.

Picture 6



Step 5:After connecting the wires according to the diagram, connect the power wires to the terminals, and then fix the chassis to the hanging board.

Picture 7



Completion.