

OXFORD GARDEN® TRAVIRA Sling Bar Chair

TVBCHST101 (shown with Ink Pen Sling)

FEATURES

- Arrives fully assembled
- Leg end caps provide protection from marring and scratching surfaces
- Also available with Tekwood slat seat and back
- Pair with Travira bar tables
- Low-maintenance and ideal for outdoor applications

MATERIALS

Powder-coated aluminum is durable and lightweight. Its rustproof nature and resistance to chipping or peeling ensures furniture will remain beautiful over its lifetime. Composite sling is a mesh fabric woven using PVC coated polyester. Durable and elastic, this outdoor fabric provides a comfortable seat that resists weathering and will endure years of use.

Seat Height	Assemb. Width	Assemb. Depth	Assemb. Height	Assemb. Weight Lbs.
32"	18.5"	21.5"	48"	8.5
Carton # of Boxes	Carton Width	Carton Depth	Carton Height	Carton Weight Lbs.
1	23"	50"	20"	18

CONSTRUCTION

Welded aluminum

HARDWARE

Stainless steel

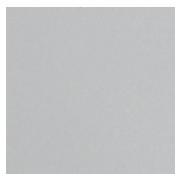
SHIPPING

Ships via LTL

ASSEMBLY

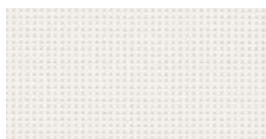
No assembly required

FRAME



FLINT
POWDER COATED
ALUMINUM

COMPOSITE SLING OPTIONS



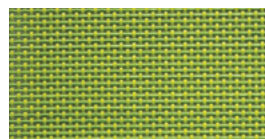
NATURAL C



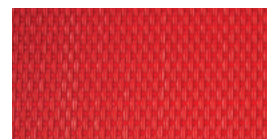
BLACK B



INK PEN T101



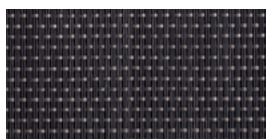
GO GREEN T102



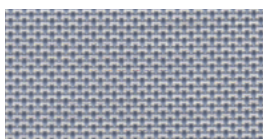
RED T105



TITANIUM T109



NINJA T106



SLATE T110



COCOA T104



BEL LOWS T111

For Quick Ship or Extended Lead Time SKU status, please call 877-866-3331 or email sales@oxfordgarden.com.