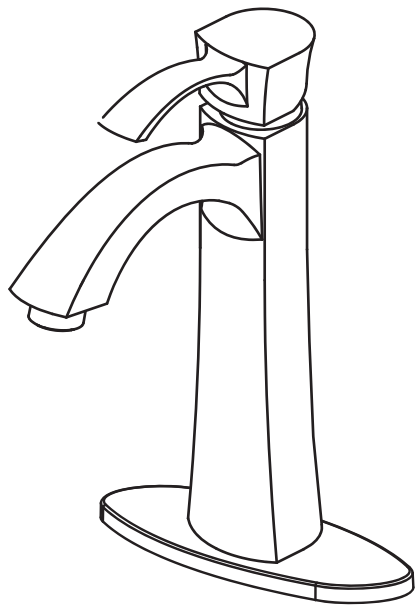


Instructions for Models:

SB-1811
SB-1811-E



Need Help?

For additional assistance or service call:

SPEAKMAN Company
400 Anchor Mill Road
New Castle, DE 19720

PHONE: 800-537-2107
EMAIL: customerservice@speakman.com
WEB: www.speakman.com

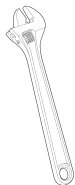
92-SB-1811-R2

What You Need To Know:

Tools:

Required:

*Adjustable
Wrench



*Groove Joint
Pliers



*Phillips
Screwdriver



*Teflon Tape

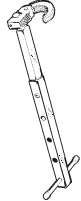


Helpful:

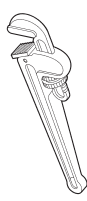
*Supply Lines



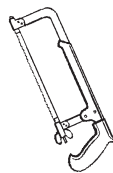
*Basin Wrench



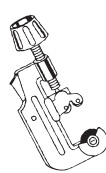
*Pipe Wrench



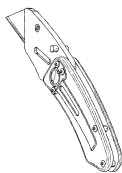
*Hacksaw



*Tubing Cutter



*Utility Knife



*Eye Protection



Important Notes:

Be sure to read instructions thoroughly before beginning installation. Do not overtighten any connections or damage may occur. This faucet has an operating range of 20-80 psi.

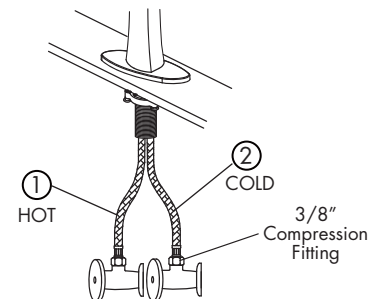
Safety Tips:

Cover your drain to prevent loss of parts.
Be sure to wear eye protection while cutting pipe.

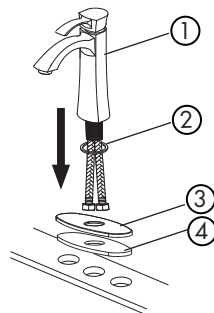
Maintenance:

Your new Lavatory Faucet is designed for years of trouble-free performance. Keep it looking new by cleaning it periodically with a soft cloth. Avoid abrasive cleaners, steel wool, and harsh chemicals as these will dull the finish and void your warranty.

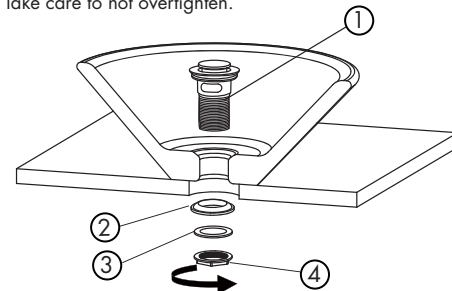
- ③ Connect Hose with red stripe (1), to HOT water supply. Connect Hose with blue stripe (2), to the COLD water supply. Use adjustable wrench to tighten connections. Take care to not overtighten. Note: Angle valves shown are not included.



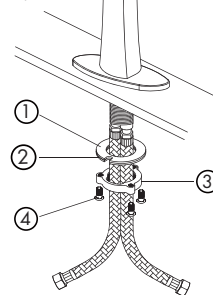
- ① Shut off water supplies. Remove old faucet. Clean sink surface in preparation for installation of new faucet. Place Faucet Body (1), Slip Ring (2), and optional Deck Plate (3), as well as optional Putty Plate (4) in order shown below.



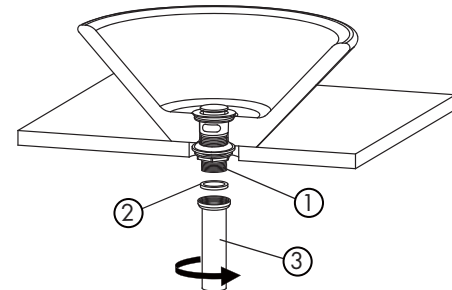
- ④ Insert Drain Body (1) into drain hole of sink from above. From underneath install Rubber Gasket (2), Red Fiber Washer (3), and Lock Nut (4) in the order shown below. Secure Lock Nut with Groove Joint Pliers. Take care to not overtighten.



- ② Slide Rubber Washer (1), and Metal Washer (2) onto threaded shank of faucet. Thread Mounting Nut (3) onto faucet shank until hand tight. Use phillips screwdriver to tighten Mounting Screws (4), securing the faucet to the sink.



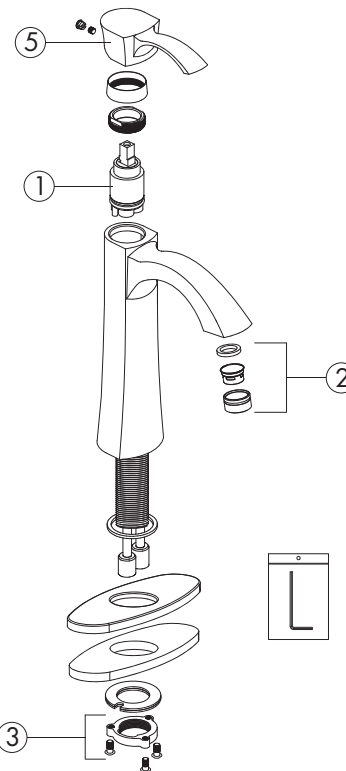
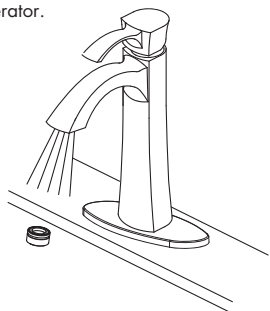
- ⑤ Install Rubber Washer (2) between Lower Drain Pipe (3) and Drain Body (1). Thread Lower Drain Pipe (3) onto Drain Body (1).



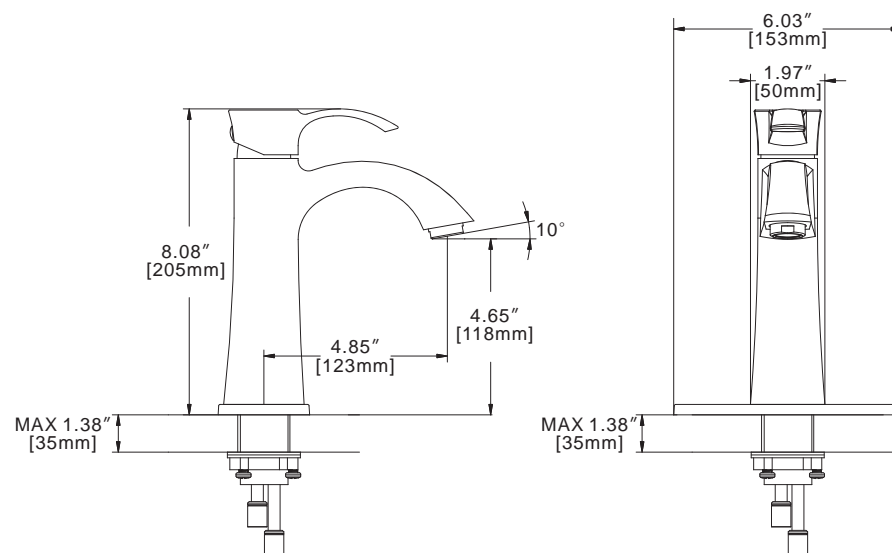
6

IMPORTANT:

After installation is completed, remove aerator. Turn on water supply and allow both hot and cold water to run for at least one minute each to remove the debris. While water is running, check for leaks. Replace aerator.

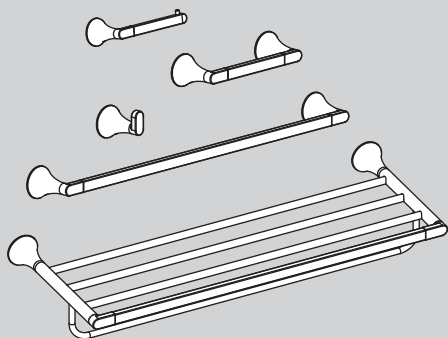


- ① RPG05-0914
- ② RPG05-0915 (1.5GPM)
- ③ RPG45-0058
- ④ RPG63-0090
- ⑤ RPG04-0412 (-BN)
- ⑦ RPG05-40126 (1.2GPM)



INSTRUCTIONS FOR MODELS

SA-2203 TOWEL RACK
SA-2204 7" TOWEL BAR
SA-2205 PAPER HOLDER
SA-2206 ROBE HOOK
SA-2207 24" TOWEL BAR



NEED HELP?

For additional assistance or service please contact:

SPEAKMAN® Company
400 Anchor Mill Road
New Castle, DE 19720

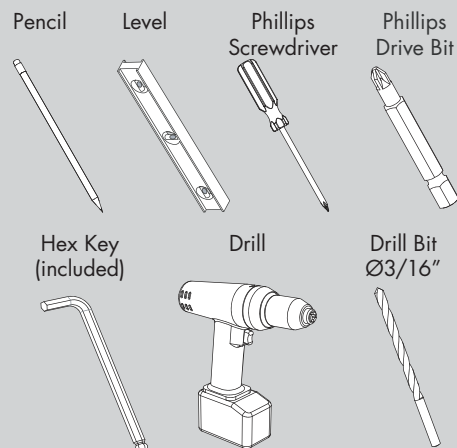
800-537-2107

customerservice@speakman.com

www.speakman.com

92-SA-2200-02

TOOLS AND SUPPLIES



IMPORTANT



- Do not over-tighten any connections or damage may occur.
- Be sure to read instructions thoroughly before beginning installation.

SAFETY TIPS

Cover your drain to prevent loss of parts.

MAINTENANCE

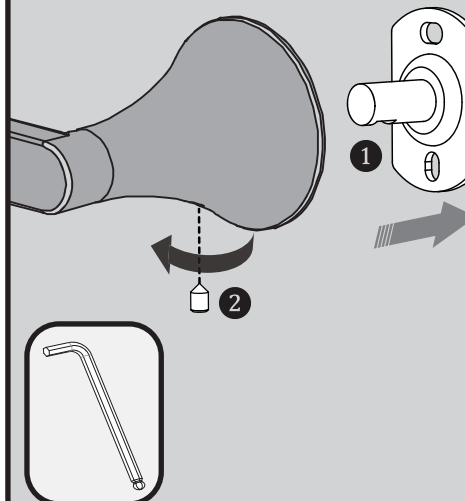
Your new Speakman Product is designed for years of trouble-free performance. Keep it looking new by cleaning it periodically with a soft cloth. The use of harsh chemicals and abrasives on any of the Speakman custom finish products may damage the finish and void the product warranty. Please be sure to only use approved cleaners. Please contact Speakman for any clarification of acceptable cleaners.

WARRANTY

Additional warranty information can be found at:
www.speakman.com

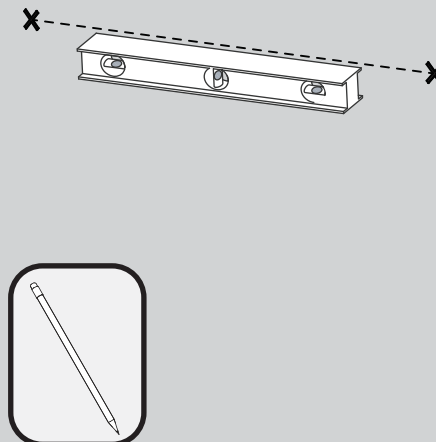
1

The Mounting Plate (1) comes pre-installed in the Accessory (2). Remove the Mounting Plate(s) by loosening the pre-installed set screw at bottom with the included Hex Key.



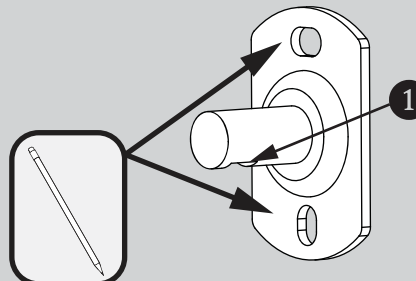
2

At the selected height, mark center point of mounting locations onto wall referencing the rough in diagram.



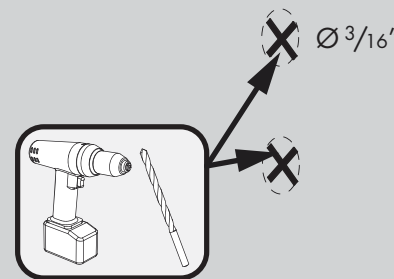
3

Align Mounting Plate over center point marked in previous step. Mounting Plate should be vertical with Notch in the cylinder (1) pointing to the bottom as shown below. Mark Mounting Screw locations onto the wall surface. Remove items after marking mounting locations.



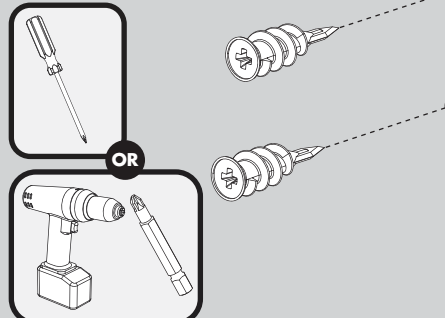
4

If mounting directly to wood stud, Plastic Anchors are not required. If mounting to tile, acquire proper mounting hardware capable of supporting the accessory in use. If mounting to drywall, drill guide holes at marked locations using a Drill equipped with a Ø3/16" bit.



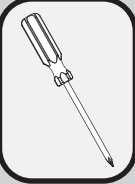
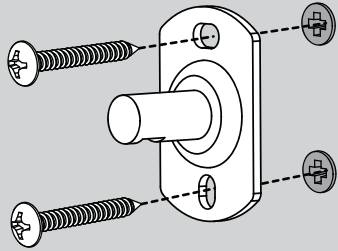
5

Insert Plastic Anchors into drilled holes and screw in the anchor using a Phillips Head screwdriver, or a Drill equipped with a Phillips Driver Bit until the head is flush with the wall surface.



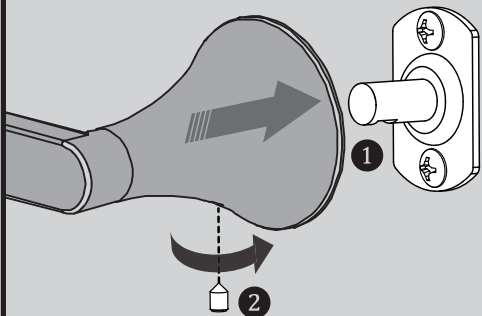
6

Secure Mounting Plate with the Mounting Screws provided. Verify that the Mounting Plate is aligned vertically.

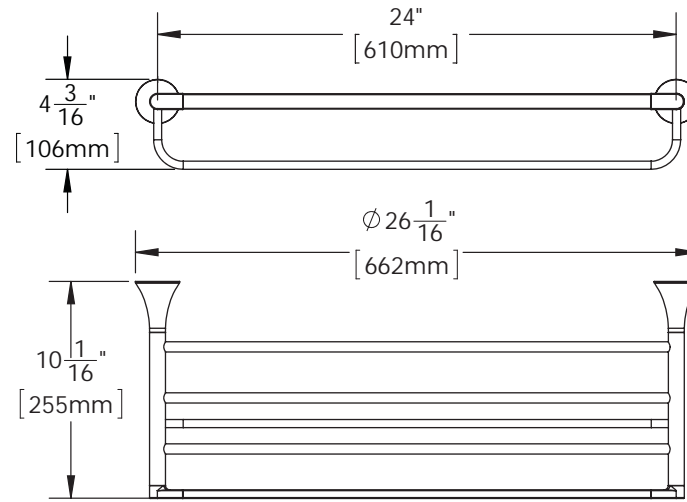
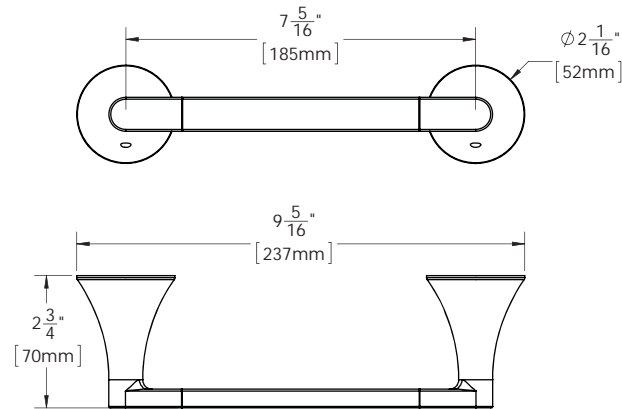
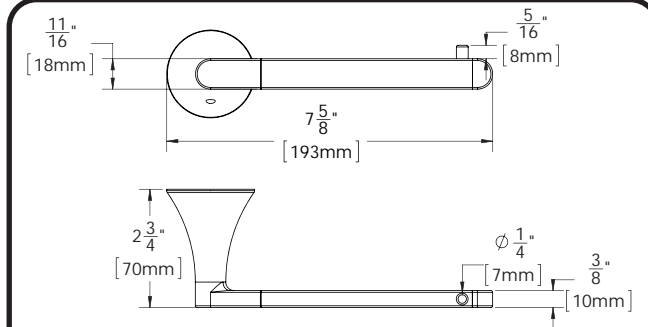
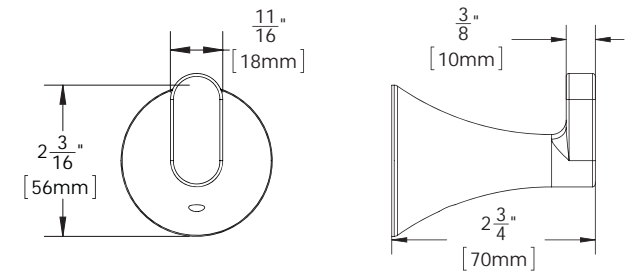
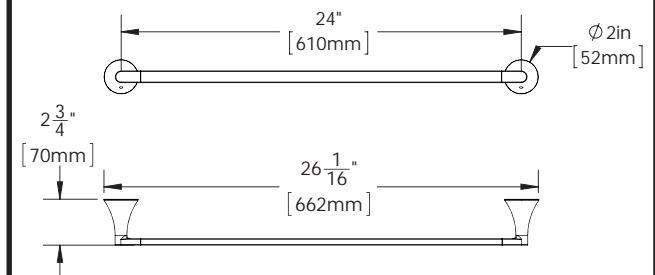


7

Place Accessory (1) over Mounting Bracket and secure the pre-installed set screw (2) with the included Hex Key.



ROUGH-IN DIAGRAMS

SPEAKMAN®

SA-2203

SA-2204

SA-2205

SA-2206

SA-2207

DIMENSIONS SUBJECT TO CHANGE WITHOUT NOTICE.